



SKYTEX SP1020 Rear Case Replacement

This guide will provide you with the steps necessary to replace or remove the back panel of your device.

Written By: yuriy16899



INTRODUCTION

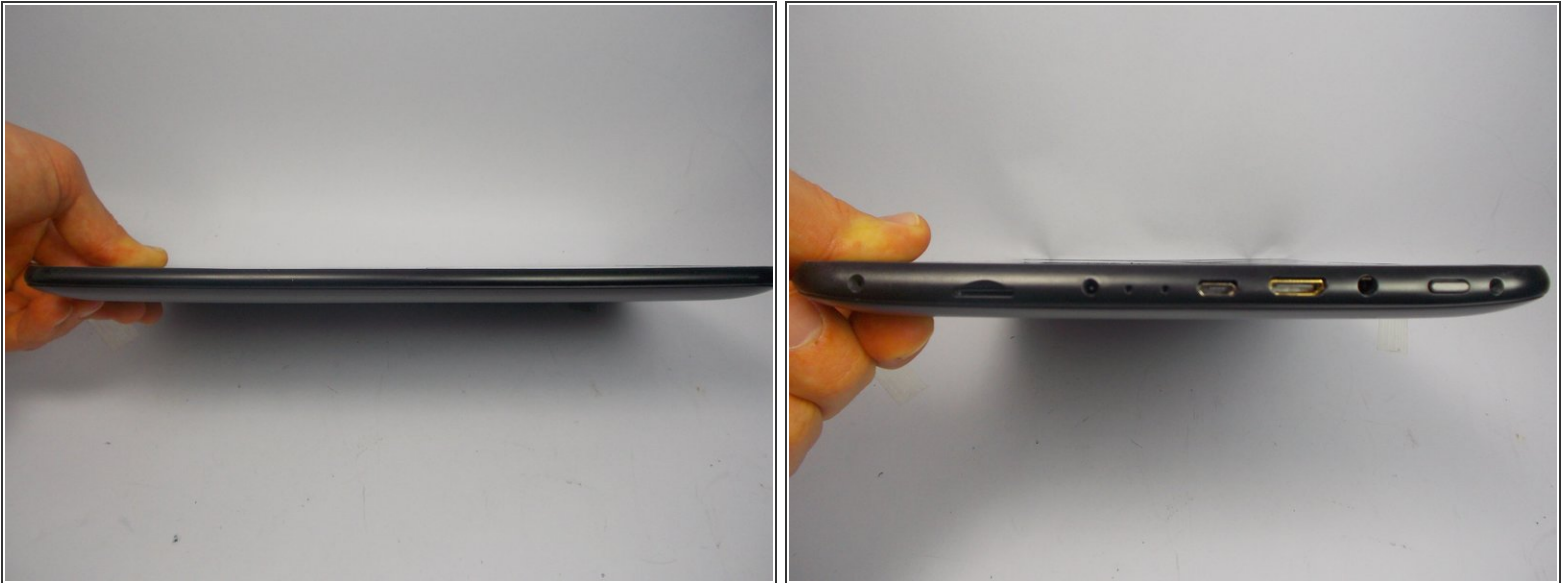
By the end of the guide the back panel will be separated from your device.



TOOLS:

- [iFixit Opening Tools](#) (1)
-

Step 1 — Rear Case



- Prior to any repairs make sure that you are familiar with the device as well as the location of its buttons and ports.
- ⓘ Turn off device prior to continuing to further steps.

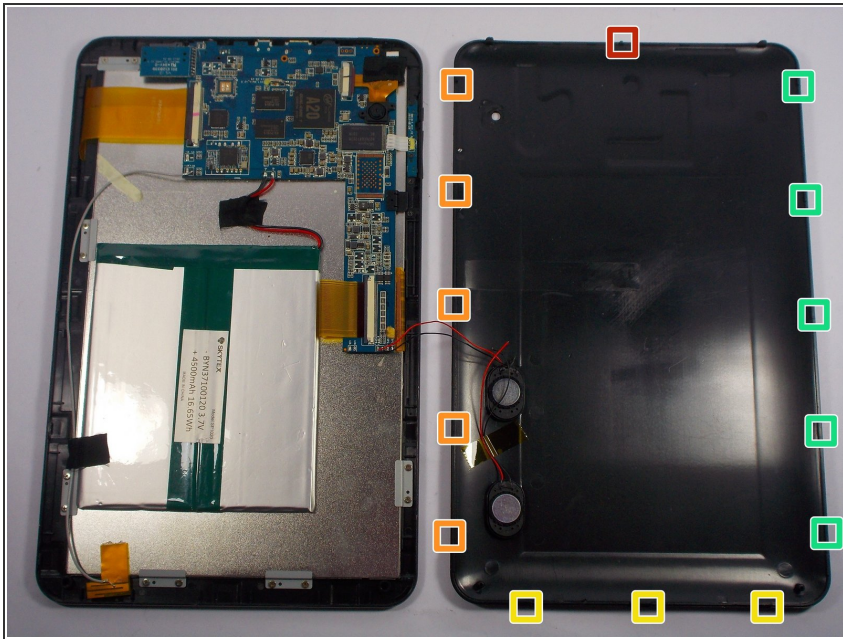
Step 2



- ⓘ Set the tablet back panel facing down, with the SKYTEX logo facing you. You will find that this step will start from the right side of the device.
- Insert the plastic opening tool between the bottom seam of the back panel and the micro SD port. The tool's edge should point toward the rear panel to prevent any scratching or damage.
- Follow up with the plastic opening tool, releasing the clips as you go all the way around the device.

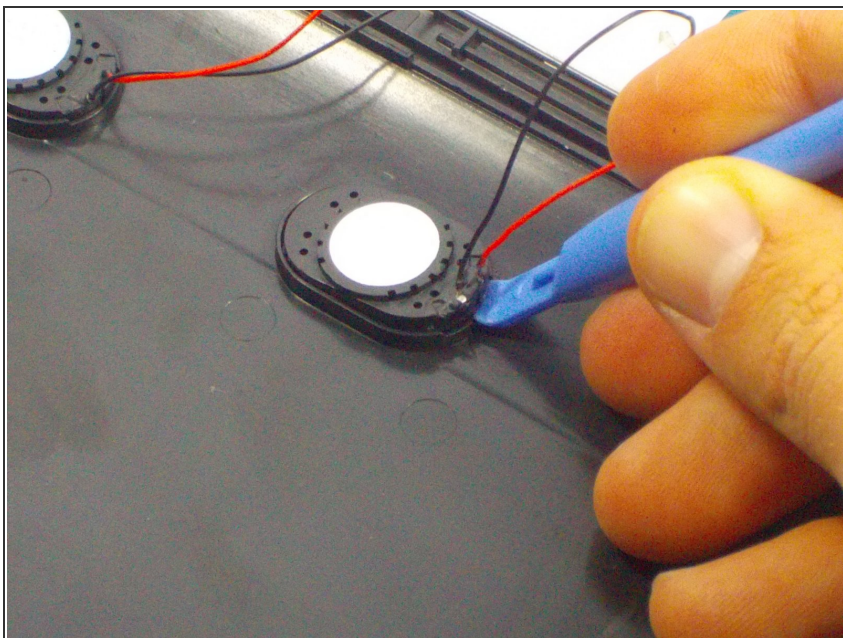
This document was generated on 2019-09-26 03:11:48 PM (MST).

Step 3



- The clips will be released in the order specified as the spudger tool is moved along the seam around the device.

Step 4



- Use a plastic opening tool to pry the speakers out of the rear case.
- The rear case will now be free from the rest of the device.

To reassemble your device, follow these instructions in reverse order.