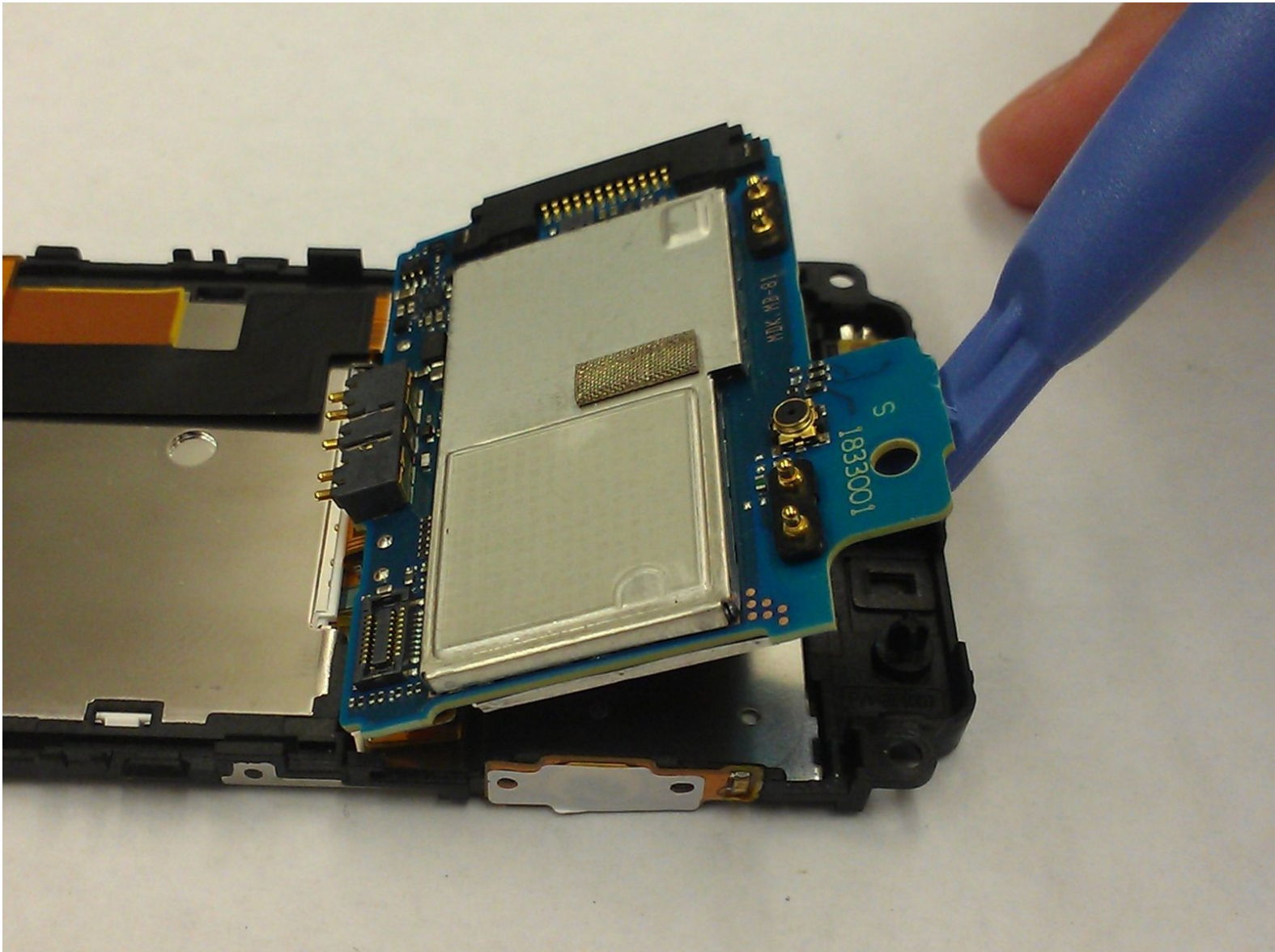




SONY Ericsson W890i Motherboard Replacement

How to reach the W890i's motherboard for installation purposes.

Written By: Bob



INTRODUCTION

The following guide details steps on how to reach your SONY Ericsson's motherboard. Once you reach the motherboard, you can identify issues the part may have.



TOOLS:

- [Spudger](#) (1)
 - [T6 Torx Screwdriver](#) (1)
 - [Phillips #00 Screwdriver](#) (1)
 - [Tweezers](#) (1)
 - [iFixit Opening Tools](#) (1)
-

Step 1 — Battery



- Flick the two lock tabs into the unlocked positions by pushing each button forward.

Step 2



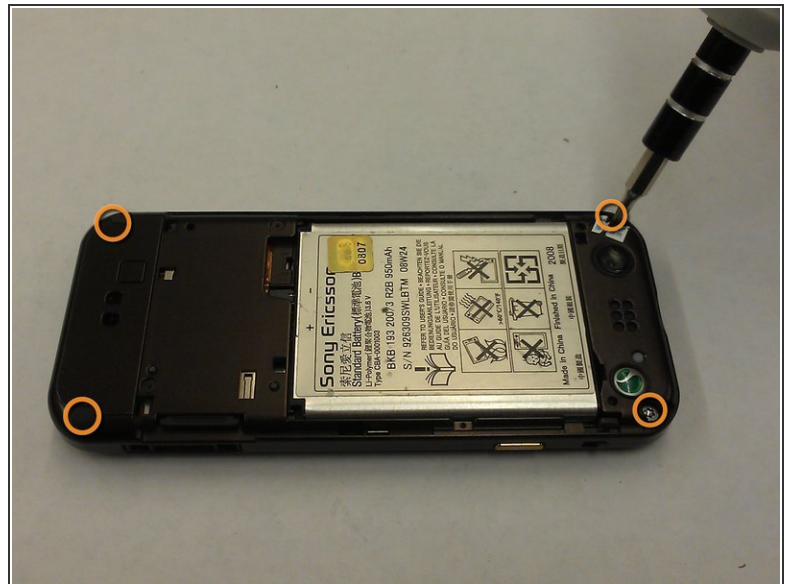
- Pop the back cover up using the groove on the top of the phone.

Step 3



- You can now access the phone's battery.
- Using a spudger, remove the battery and set it aside.

Step 4 — Keypad and Front Cover



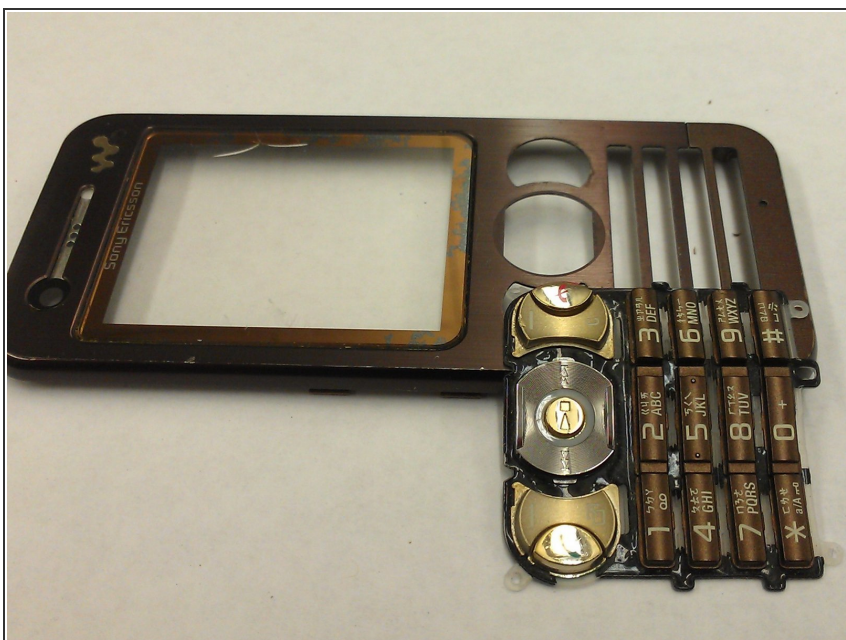
- Remove the two small rubber pieces that cover the lower screws.
- Using a T-6 Torx wrench or screwdriver, remove all four of the small screws at the top and bottom corners on the back of the phones.

Step 5



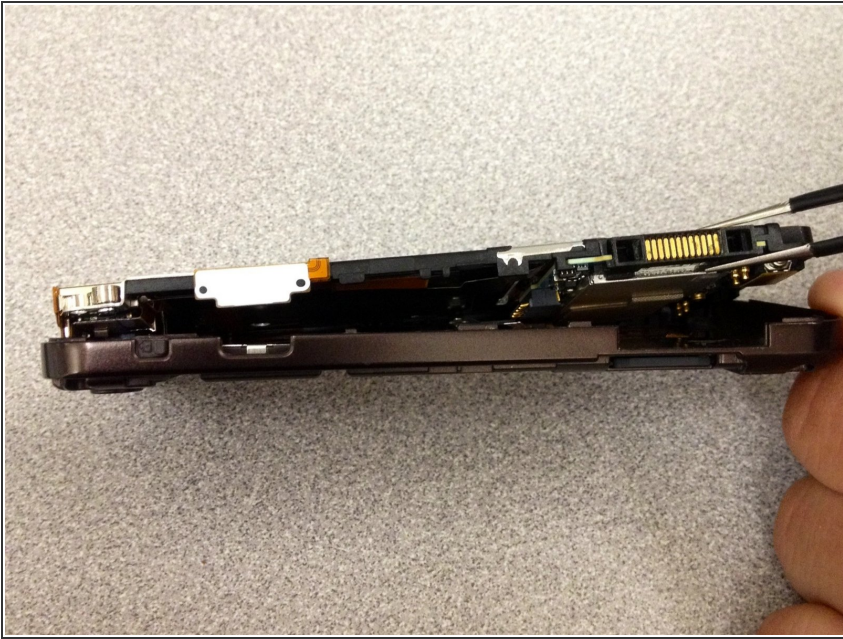
- Gently pry off the faceplate using a plastic opening tool.
- Insert the plastic opening tool into the middle of the front and back panels of the phone.

Step 6



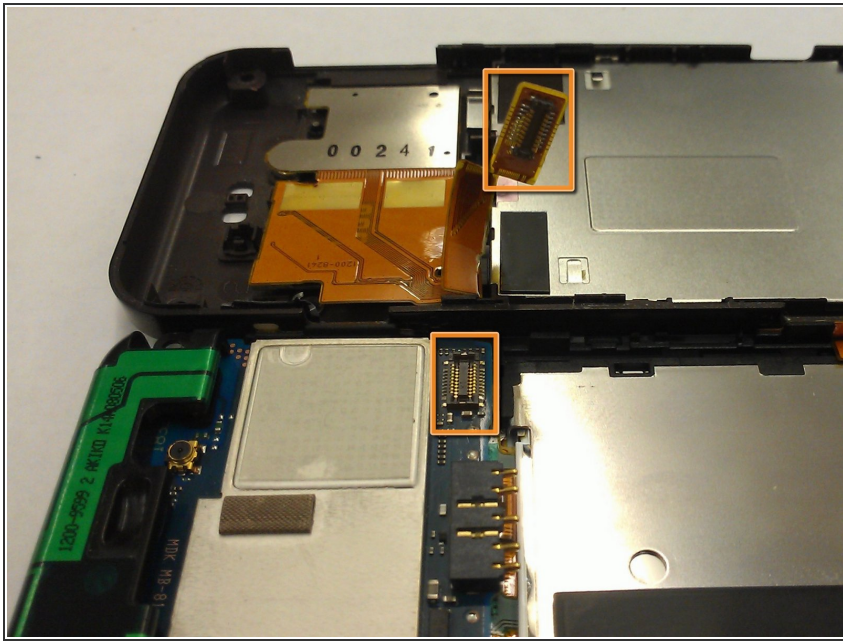
- Separate the front and back panels that were pryed open with the plastic opening tool.

Step 7 — Motherboard



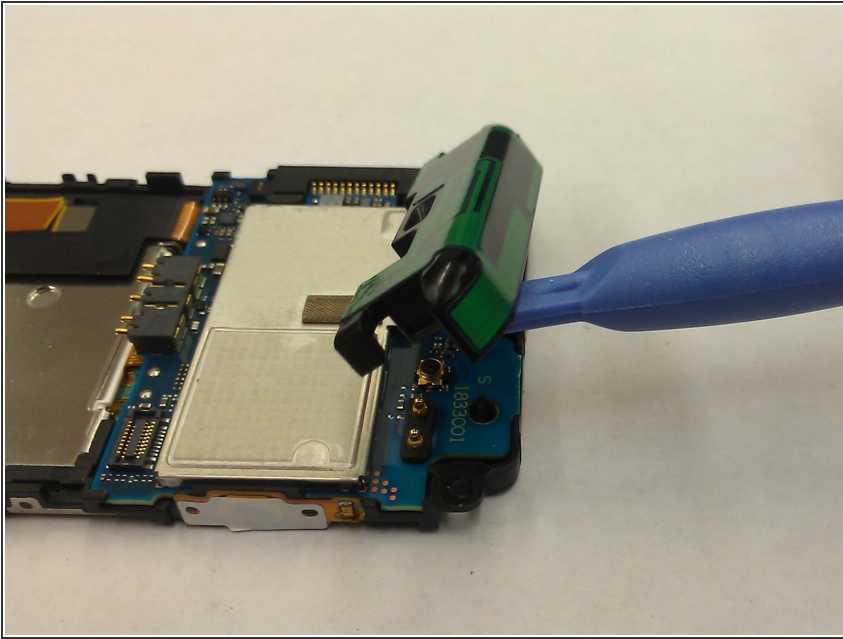
- Now that the faceplate is off, use tweezers to separate the backplate from the inner manifold.

Step 8



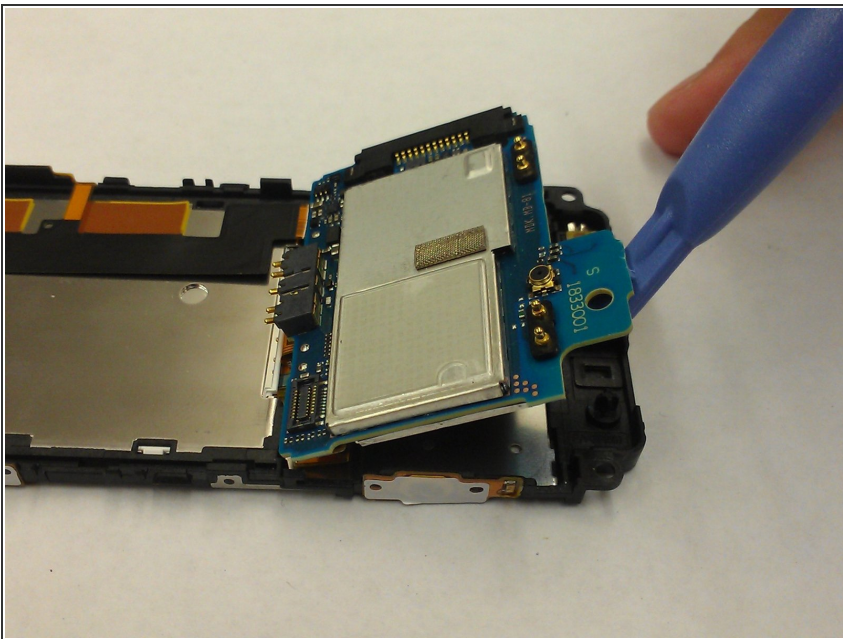
- With both insides of the phone exposed, gently detach the ribbon cable connecting the two inner sides. You can now separate the two sides of the phone.

Step 9



- The motherboard is located on the side with the green and black bumper on the bottom. Use the plastic opening tool to pry the bumper off.

Step 10



- To remove the motherboard, apply upwards pressure on the bottom green tab.

To reassemble your device, follow these instructions in reverse order.