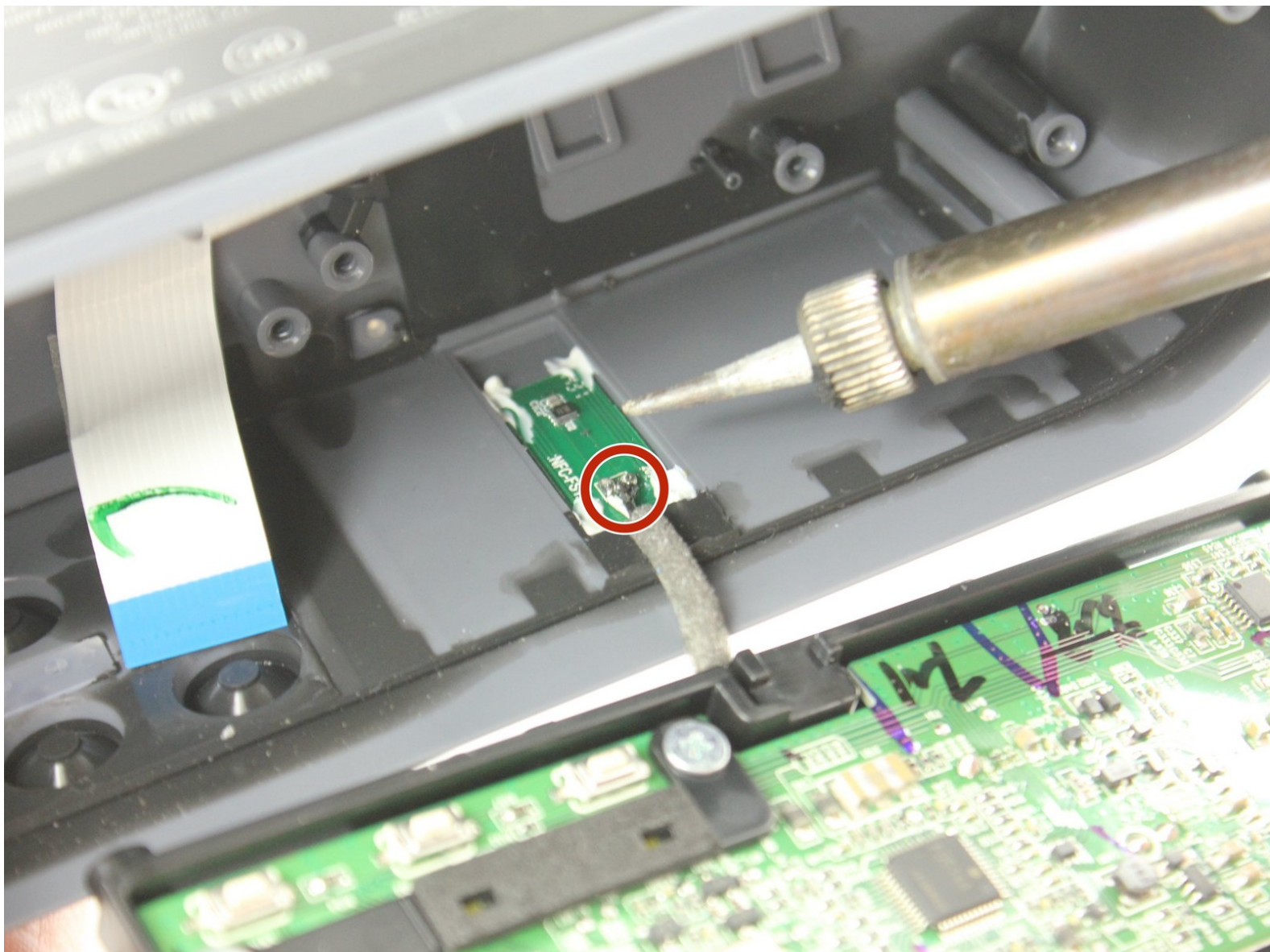




# SONY SRS-X2 Speaker Replacement

This is a step-by-step on how to replace the speaker for the Sony SRS-X2 Speaker.

Written By: Megan Berthiaume





## TOOLS:

- [Soldering Iron](#) (1)
  - [Phillips #1 Screwdriver](#) (1)
  - [Metal Spudger](#) (1)
  - [iFixit Opening Tools](#) (1)
-

## Step 1 — Face Plate



- Use the metal spudger to pry the face screen open. Pull away from the device to remove.

## Step 2





- Remove seven, 27 mm long Phillips #1 screws.
- Remove three, 11mm long Phillips #1 screws.
- Remove four, 10 mm long Phillips#1 screws.

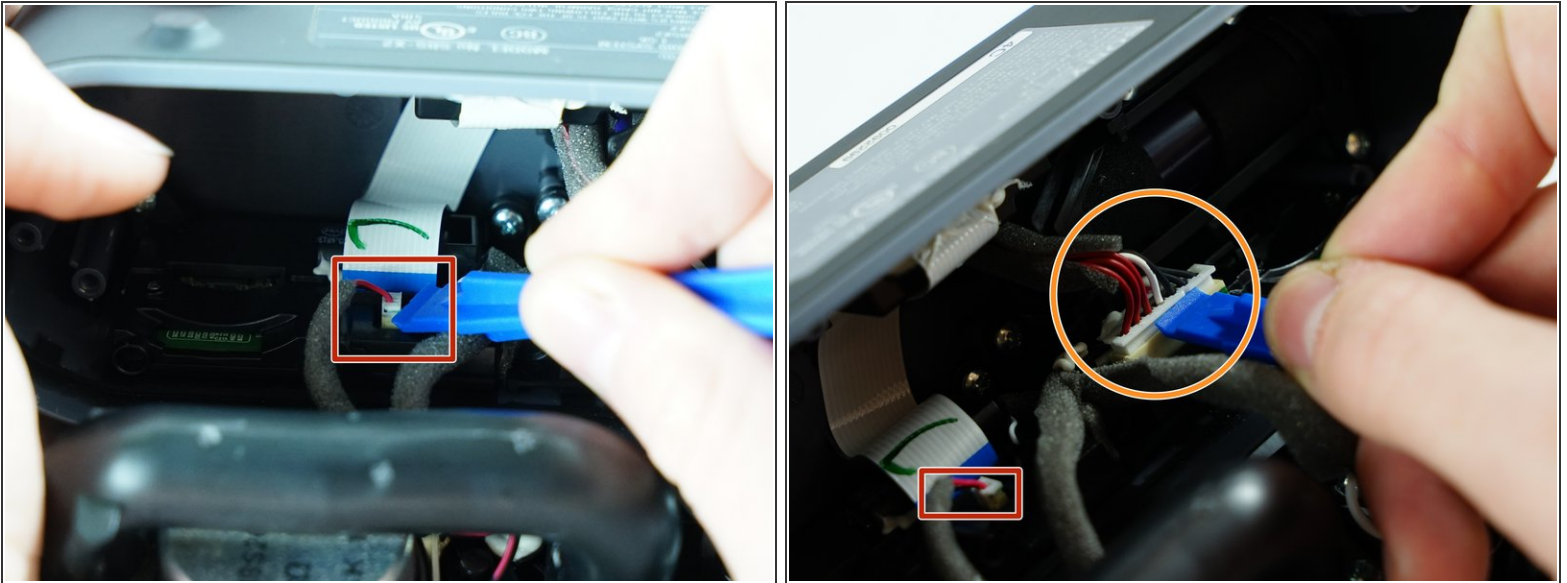


### Step 3



-  Before removing the host plate, face the feet of the speaker to you. The wiring allows for minimal access to the inner components.
- Use the spudger to remove the speaker host plate. Insert the metal tip in the seam between the host plate and the shell.
-  Be very careful when pulling the speaker host plate (described in the next step) as there are wiring connected to the host plate. This wiring is soldered to the plate and to the shell of the device. The wires are flexible and you can still open the device as shown in the second picture.
- Center the spudger on the top of the device, this is furthest from the wiring, in wiggling the spudger under the plate, the plate should move up and out of the shell, you can finish lifting the plate away with your fingers.

## Step 4

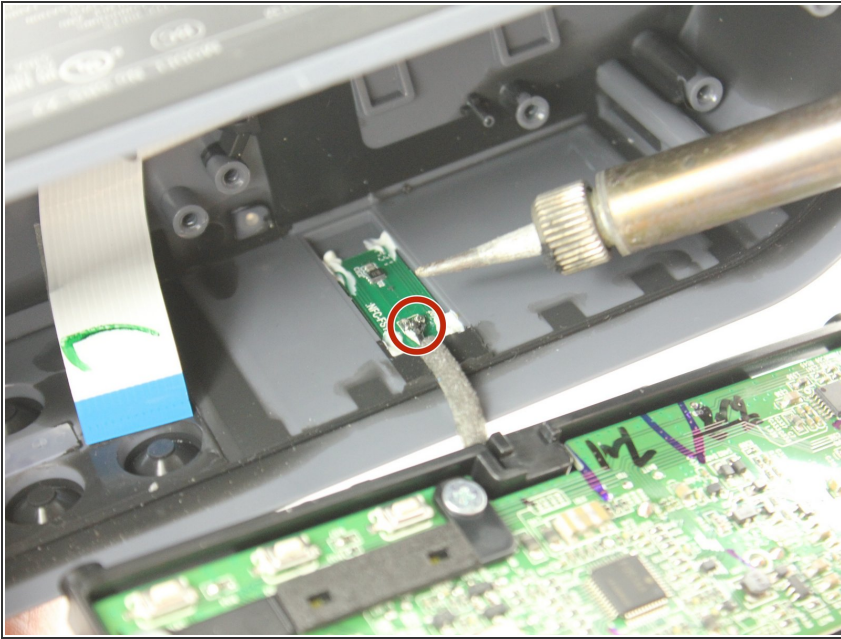


⚠ Be gentle when using the opening tool, wiggle the opening tool on each side of the socket to be sure the plastic does not snap.

⚠ Be careful not to damage the wires, pull from the plastic base to unplug.

- Unplug the power cable connector shown using the plastic opening tool. Wiggle the tool under the lip of the plug, the smaller area and odd angle means lifting up with the plastic tool in the setup shown.
- Unplug the power connector shown using the plastic opening tool lift from the front of the plug shown and move the opening tool to either side to get it all the way out of the socket.

## Step 5 — Speaker



- ⚠ Be very careful with the iron, it is very hot.
- ⚠ Do not hold the soldering iron on the wire too long you could burn through the device.
- Use the soldering iron to heat the connection shown. Pull the wire once heated to disconnect safely.

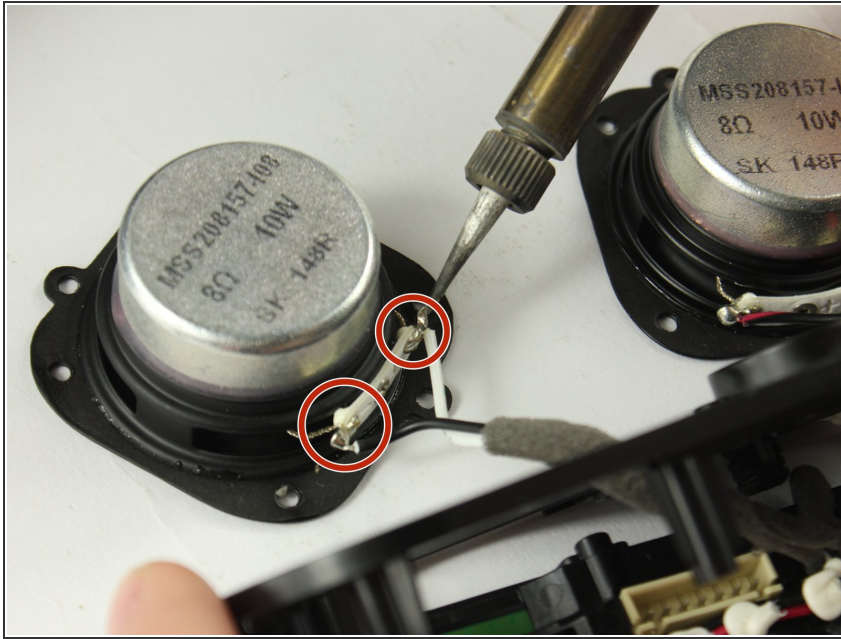
## Step 6




- Remove the four, 10 mm Phillips#1 screws from the black pipe. This allows for air to flow through the device to the battery to cool it, but it is in the way of removing the speaker.
- Once the screws have been taken out just lift the pipe up and away from the device components.



## Step 7



-  The soldering iron and any connections you melt will be extremely hot, it is a good idea to use heat-safe gloves.
- Remove the speakers by lifting up and angling the solder ports away from the edge of the speaker housing.
  - Melt the solder from the connection to the speaker, pull the wire to disconnect.

To reassemble your device, follow these instructions in reverse order.