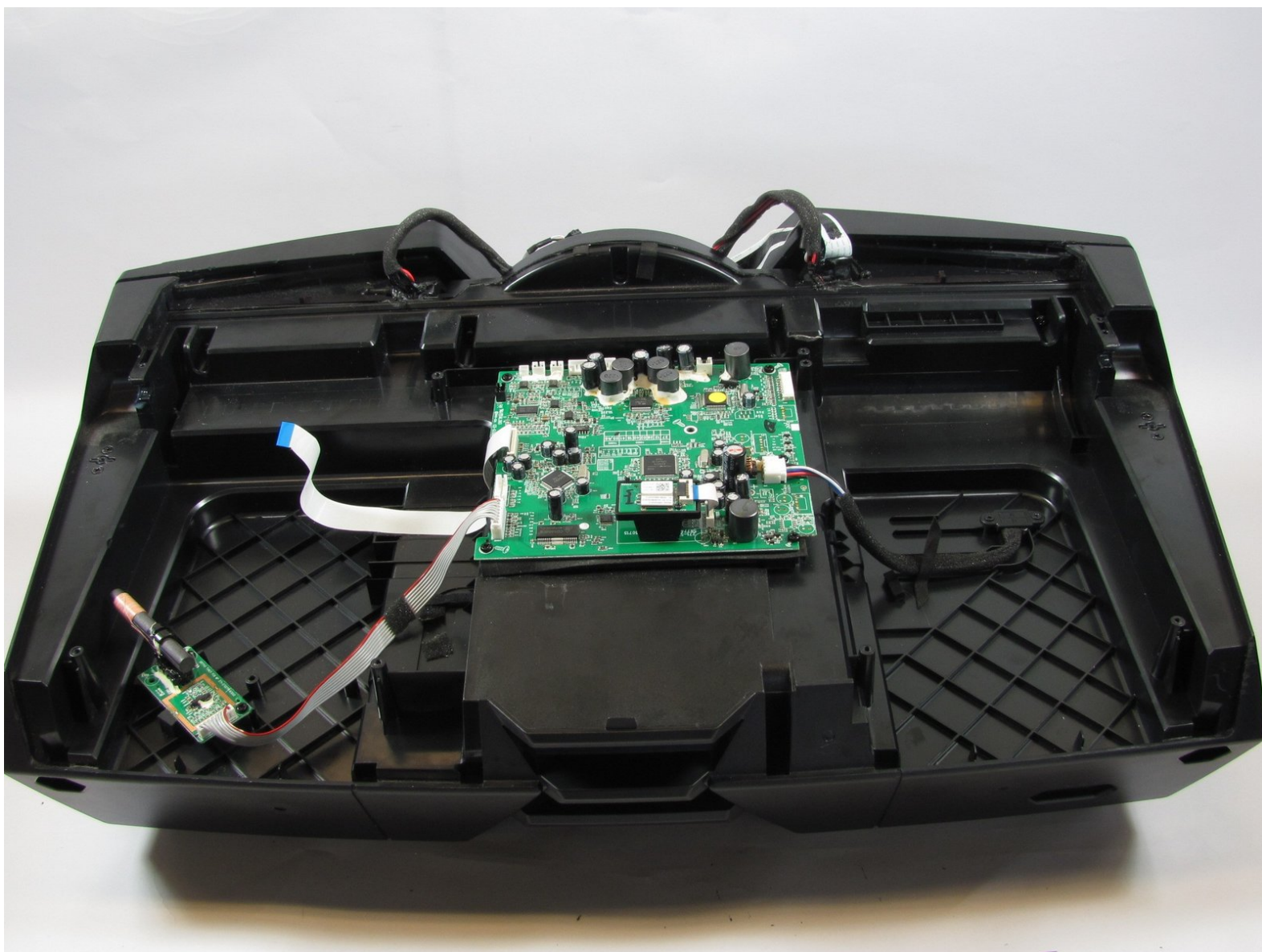




# SONY ZS-BTG900 Motherboard Replacement

This guide will show you how to open up your device and replace the main circuit board within the device.

Written By: Alfredo Rodriguez



# INTRODUCTION

If your device has completely stopped working you may need to swap out the motherboard inside your device. In this guide you will open up the boombox following the prerequisite disassembly guide and then replacing the motherboard with a working version.



## TOOLS:

- [iFixit Opening Tools](#) (1)
  - [Phillips #2 Screwdriver](#) (1)
-

## Step 1 — SONY ZS-BTG900 Disassembly



- Lift up the handle to reveal the screws.
- Use your Phillips #2 screwdriver to remove the eight 1/2 inch screws.

## Step 2



- Flip your device over.
- Use your Phillips #2 screwdriver to remove the six 3/4inch screws.
- ⓘ In removing the screws within the two holes on the back of the device, you may want to use your shaft extension to provide extra torque as they may be very tight.



### Step 3



- Flip your device back over to access the top of the device.
- Use your plastic opening tool to pry up and remove the panel on the top, left hand side of the device.
- ⓘ This will reveal two additional screws.

### Step 4



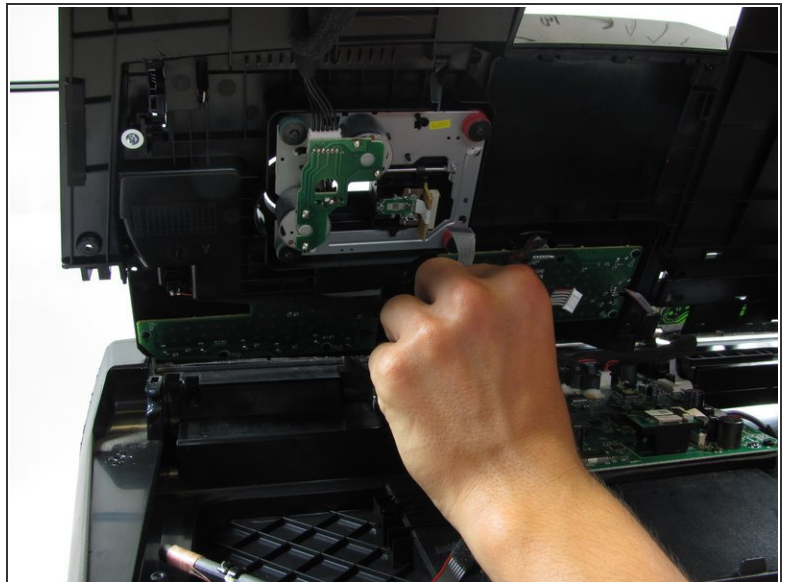
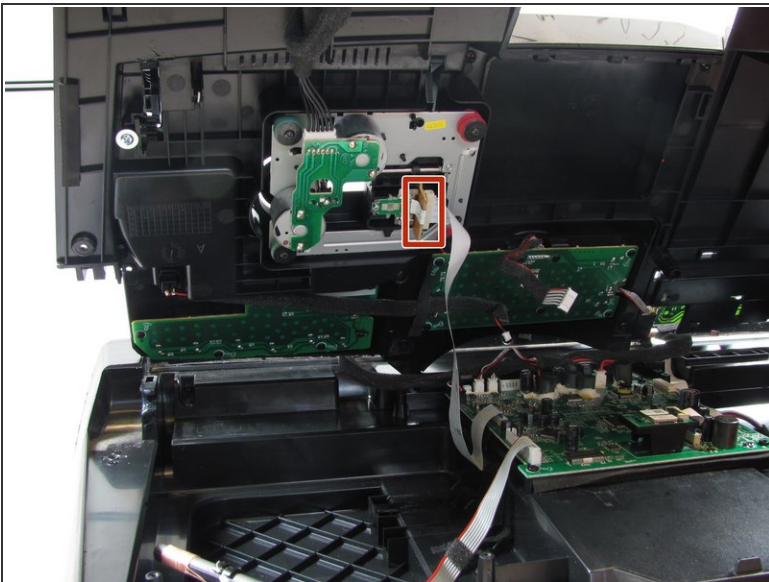
- Use your Phillips #2 screwdriver to remove the two 1/2 inch screws underneath the now-removed panels.

## Step 5



- Lift off the top, beginning from the back of the device.
- ⓘ Take care when lifting the top portion as there are many wires connected to the inside of the device and you do not want to disconnect these just yet.

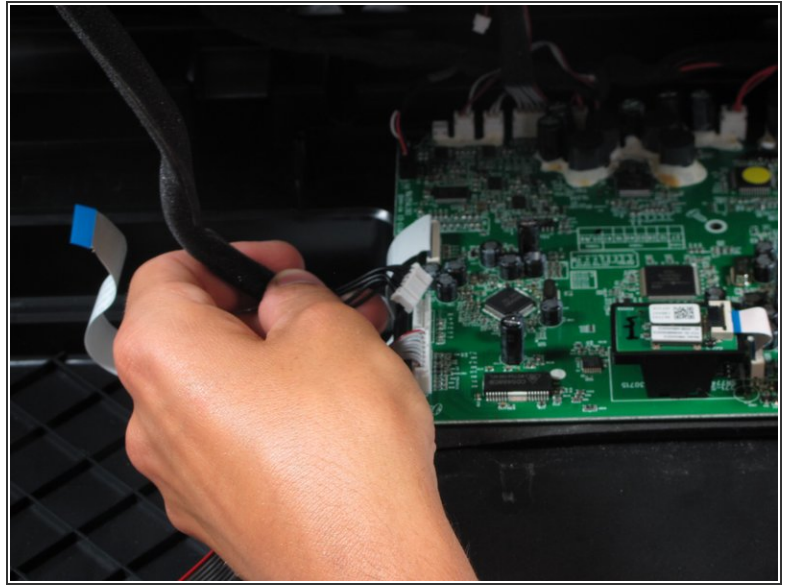
## Step 6



- Disconnect the CD drive ribbon cable from the top of the device.

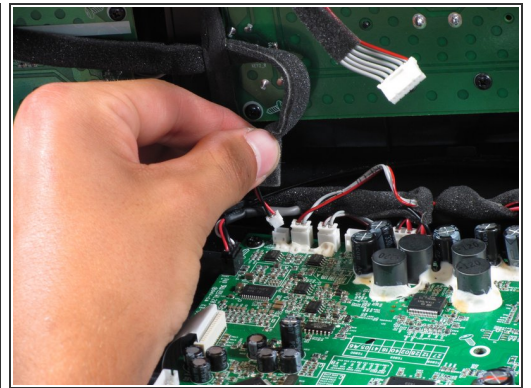
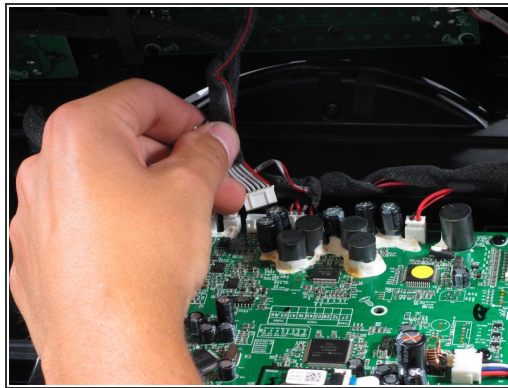
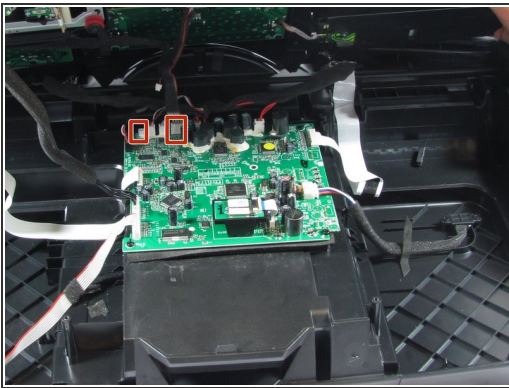


## Step 7



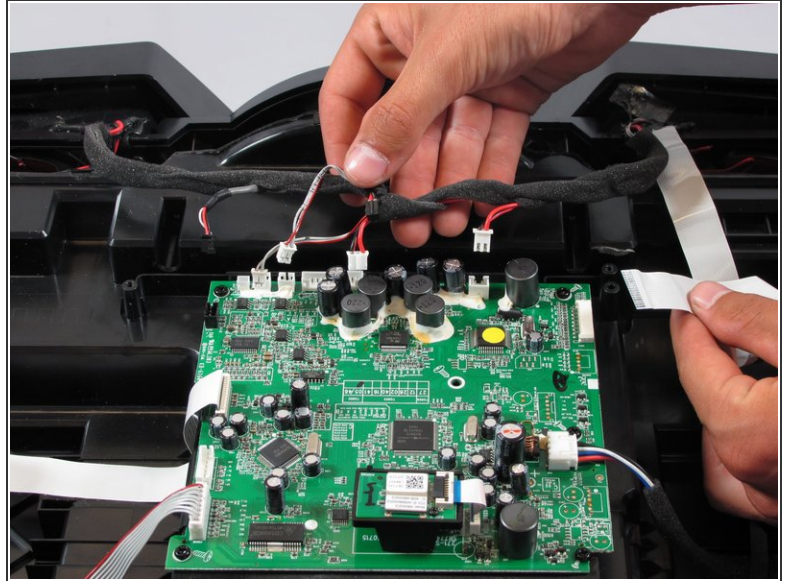
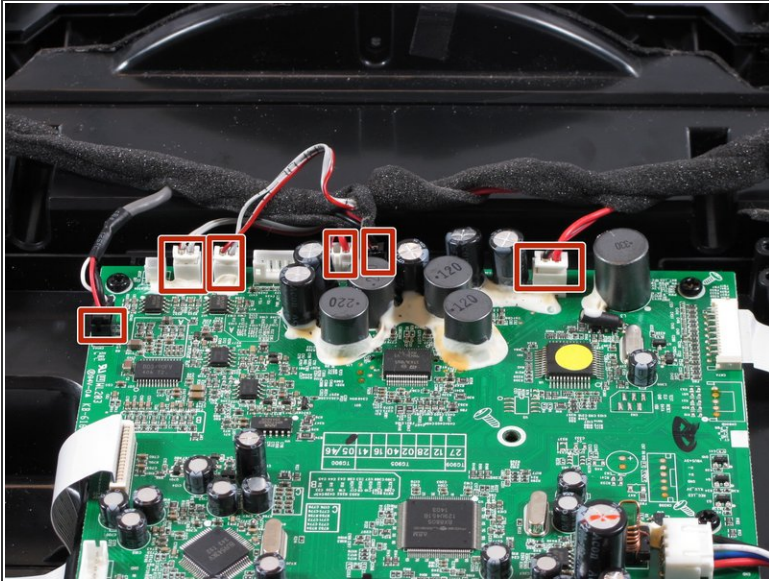
- Disconnect the antenna cables.

## Step 8



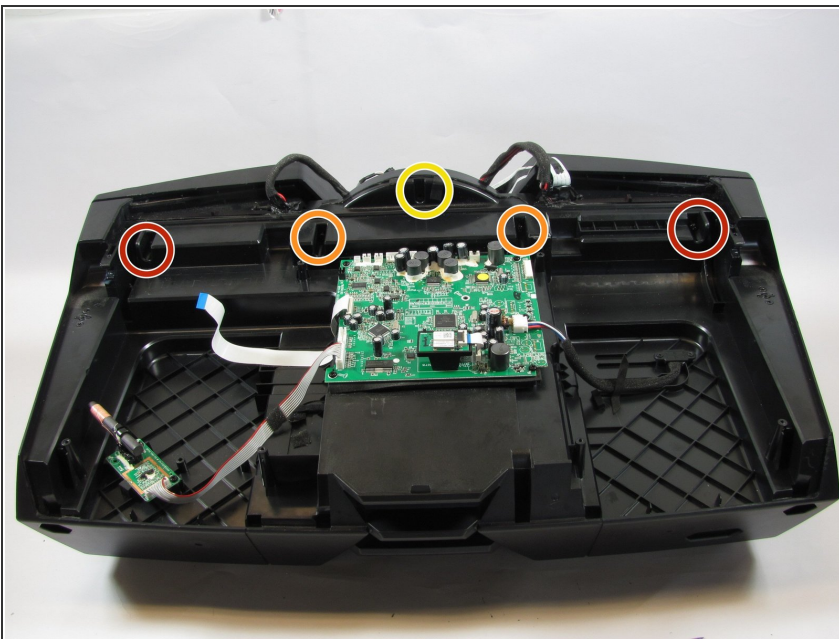
- Disconnect the remaining cables from the motherboard.

## Step 9



- Once you have removed the top, we will begin removing the front of the device.
- Begin by disconnecting the 6 cables that lead from the front of the device to the motherboard.

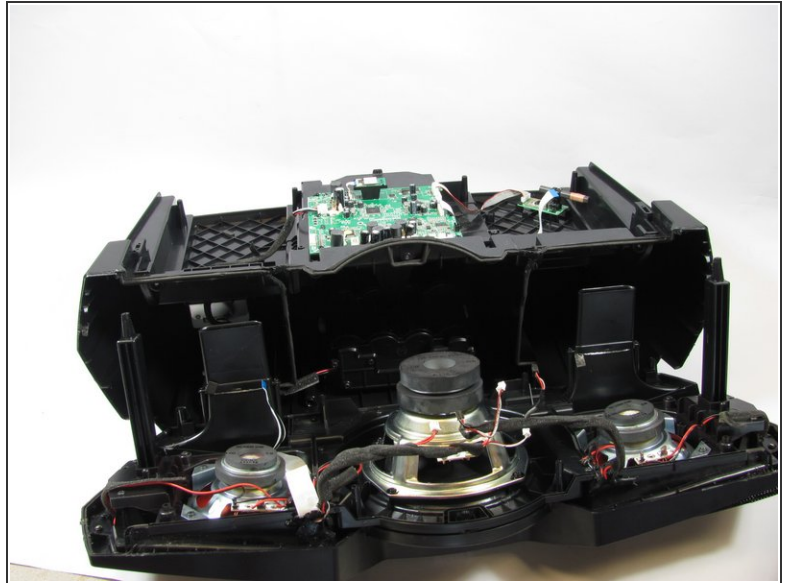
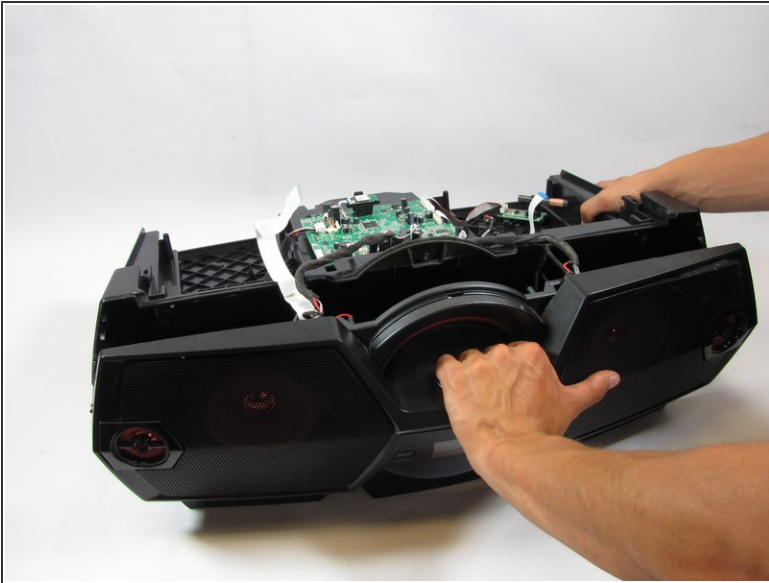
## Step 10



- Use your Philips #2 screwdriver to remove the two 1 inch screws on the outermost part of the device.
- Use your Philips #2 screwdriver to remove the two 3/4 inch screws on the outermost part of the device.
- Use your Philips #2 screwdriver to remove the one 5/6 inch screw on the middle part of the device.

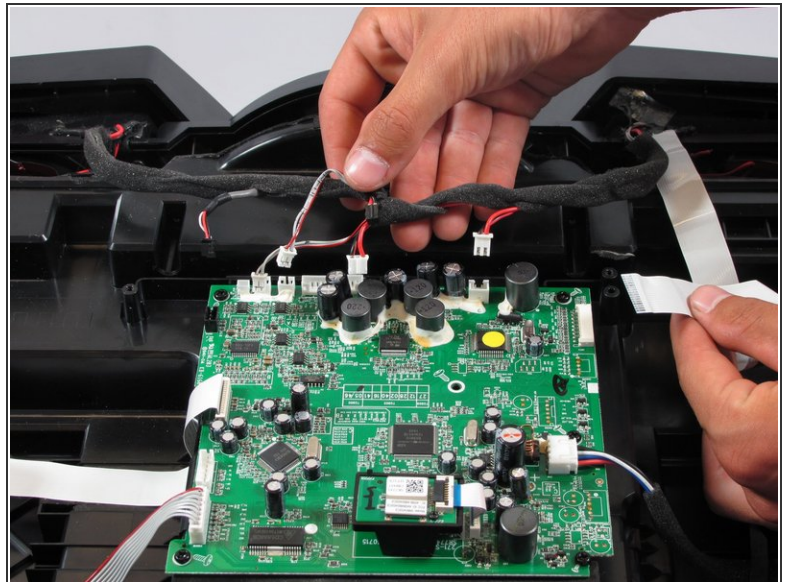
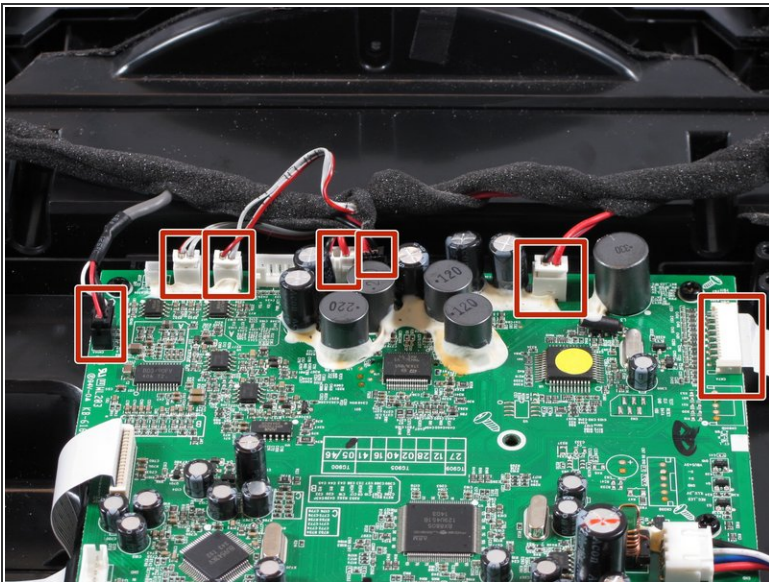


## Step 11



- Firmly pull off the front of device.
- ⓘ There will be a small amount of black glue. You can simply ignore this, and continue to pull, or use a sharp edge to cut the glue once you've revealed it.

## Step 12 — Motherboard

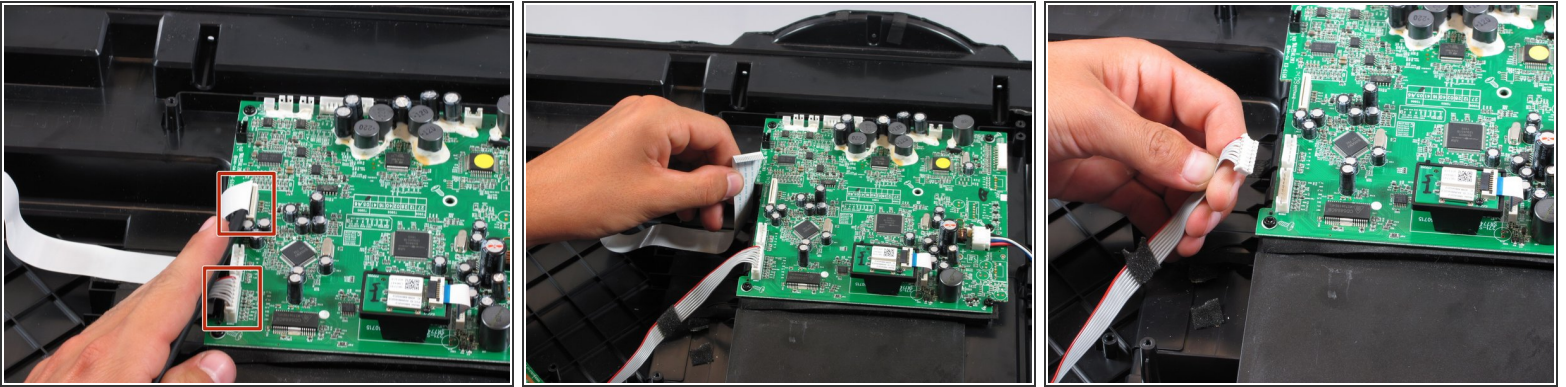


- Gently pull the corresponding cables individually from the top of the motherboard to remove them.
- For the next 3 steps, use the plastic prying tool if needed.

This document was generated on 2019-09-19 04:11:48 PM (MST).

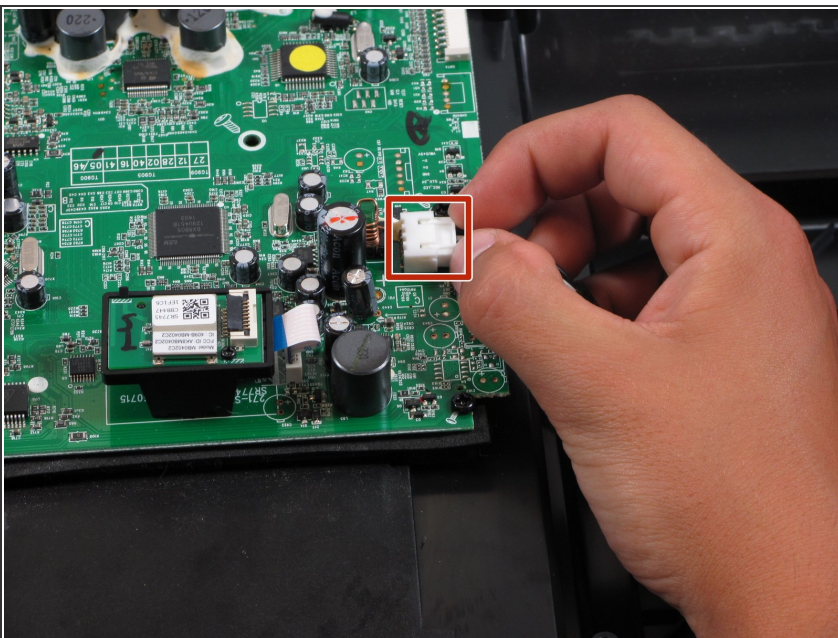


## Step 13



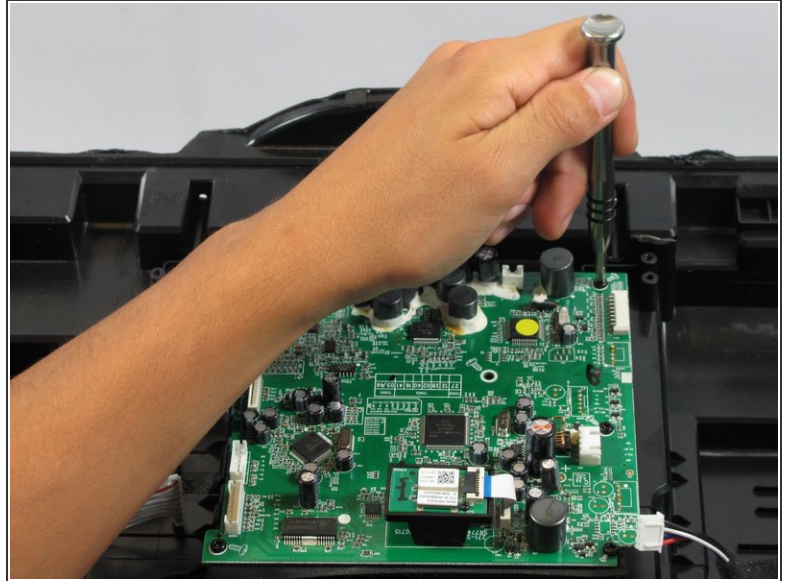
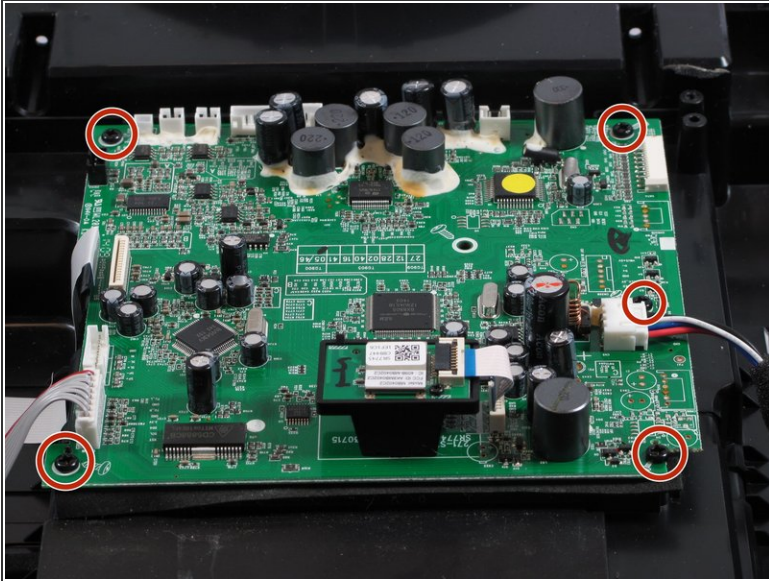
- Remove the following 2 cables from the left side of the board.

## Step 14



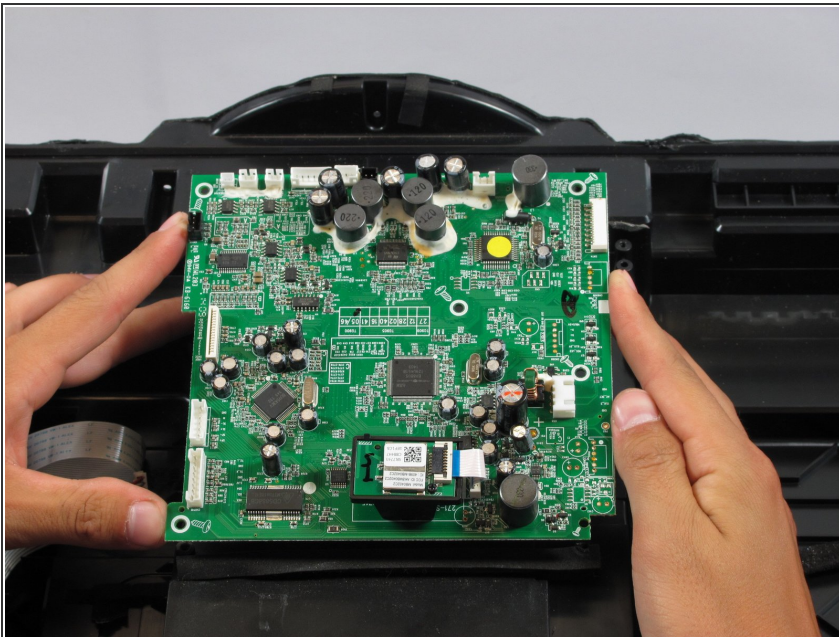
- Remove the final cable on the bottom right side of the motherboard.

## Step 15



- Remove the five 1/2inch screws from the motherboard using a Phillips #2 screwdriver.

## Step 16



- Gently lift the motherboard from its compartment
- Now you are done!

To reassemble your device, follow these instructions in reverse order.