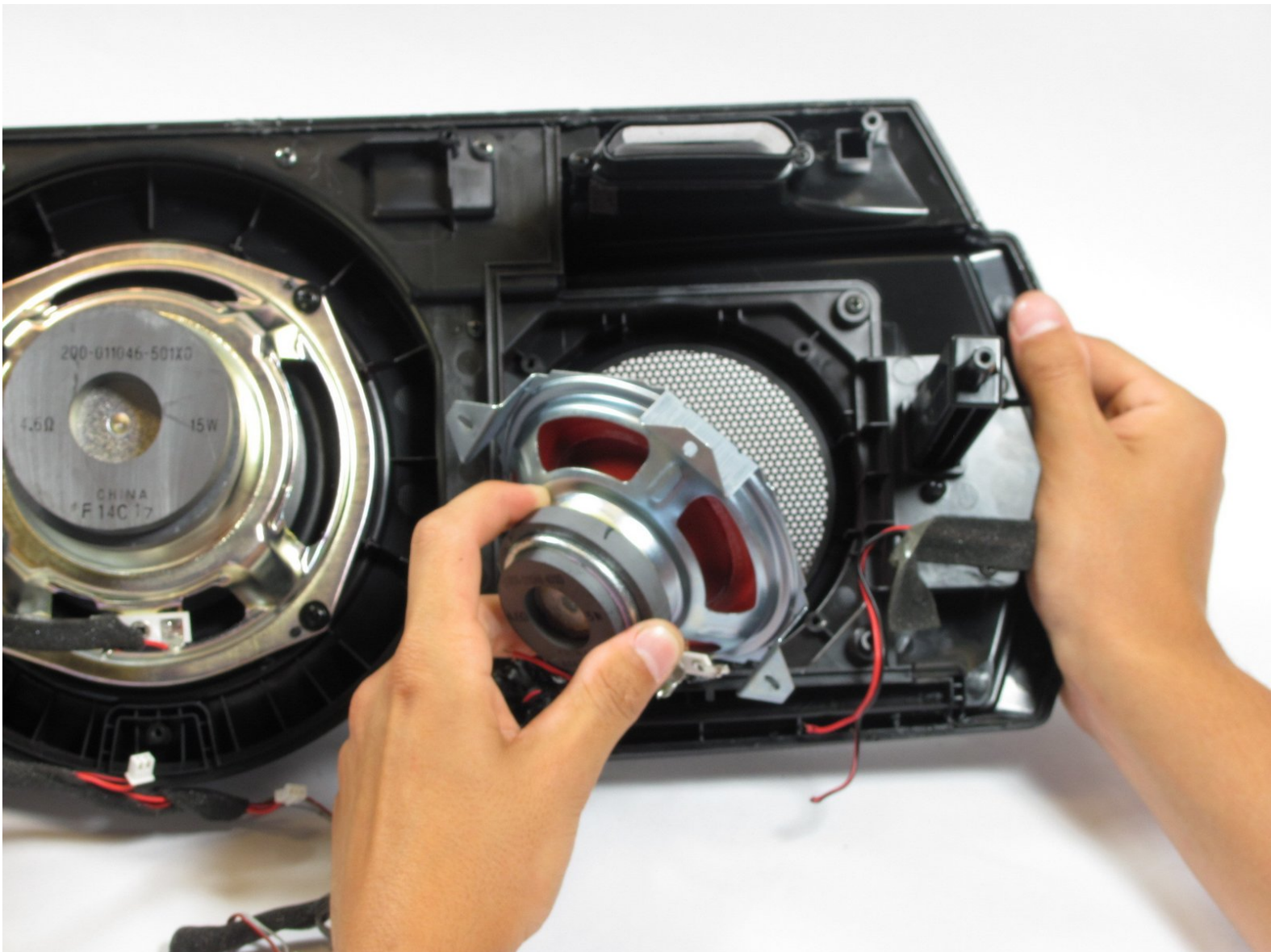




SONY ZS-BTG900 Speaker Replacement

This guide will show you how to replace the left/right speaker in your boombox.

Written By: Alfredo Rodriguez



INTRODUCTION

As speakers get older, and as they experience more wear from being played at high volume, they can eventually blow out.

Instead of throwing away your whole speaker system, it is actually very easy to replace an individual, blown out speaker. Replacement speakers are also very easy to find online, or salvage from other devices.



TOOLS:

- [iFixit Opening Tools](#) (1)
 - [Phillips #2 Screwdriver](#) (1)
 - [Soldering Iron](#) (1)
-

Step 1 — SONY ZS-BTG900 Disassembly



- Lift up the handle to reveal the screws.
- Use your Phillips #2 screwdriver to remove the eight 1/2 inch screws.

Step 2



- Flip your device over.
- Use your Phillips #2 screwdriver to remove the six 3/4inch screws.
- ⓘ In removing the screws within the two holes on the back of the device, you may want to use your shaft extension to provide extra torque as they may be very tight.

Step 3



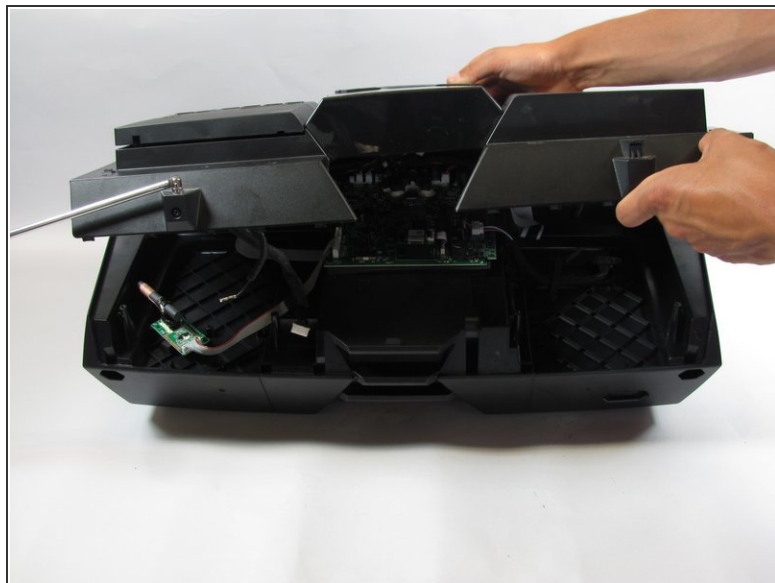
- Flip your device back over to access the top of the device.
- Use your plastic opening tool to pry up and remove the panel on the top, left hand side of the device.
- ⓘ This will reveal two additional screws.

Step 4



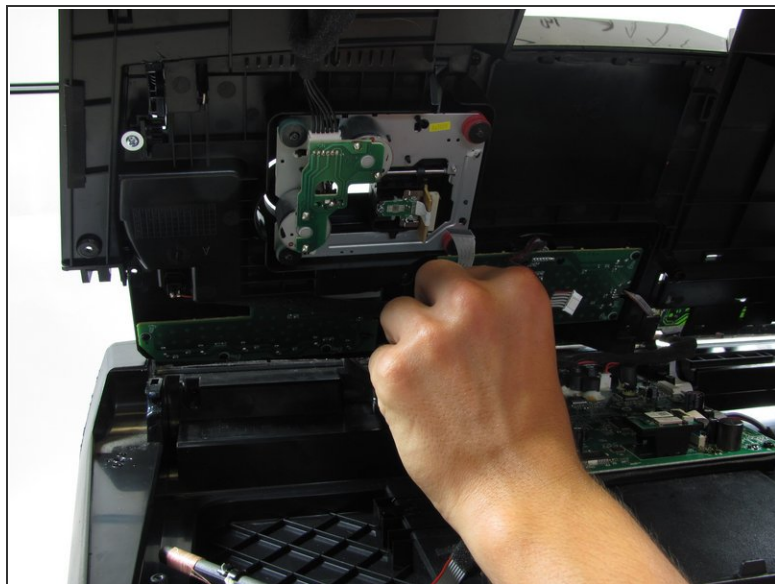
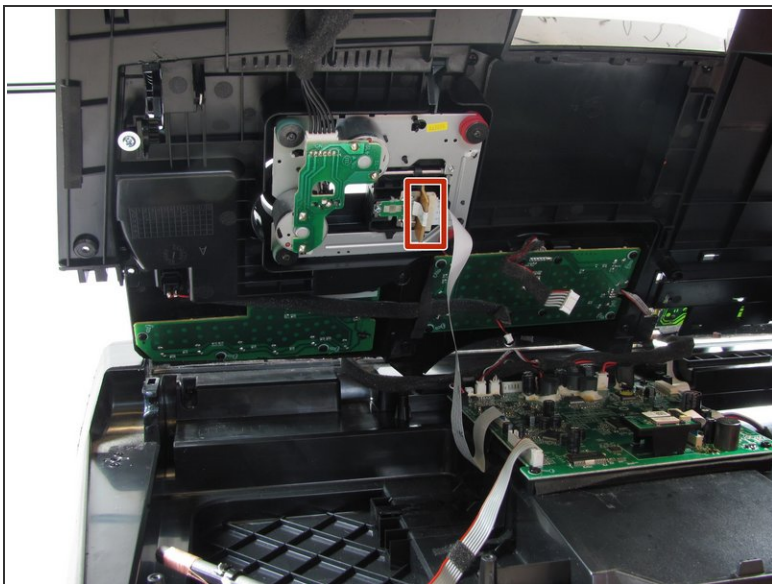
- Use your Phillips #2 screwdriver to remove the two 1/2 inch screws underneath the now-removed panels.

Step 5



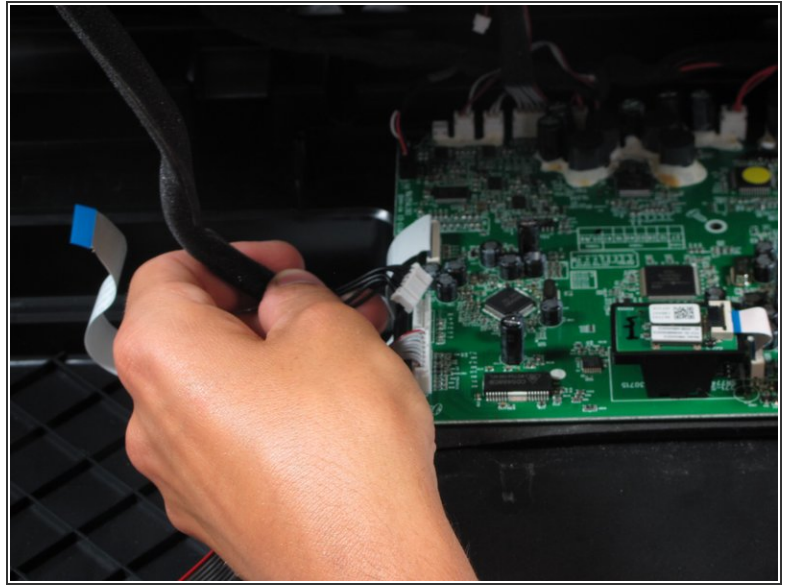
- Lift off the top, beginning from the back of the device.
- ⓘ Take care when lifting the top portion as there are many wires connected to the inside of the device and you do not want to disconnect these just yet.

Step 6



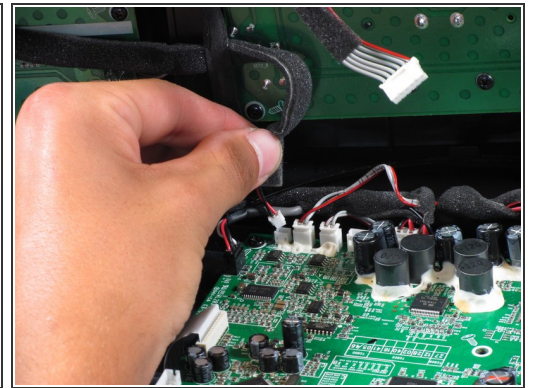
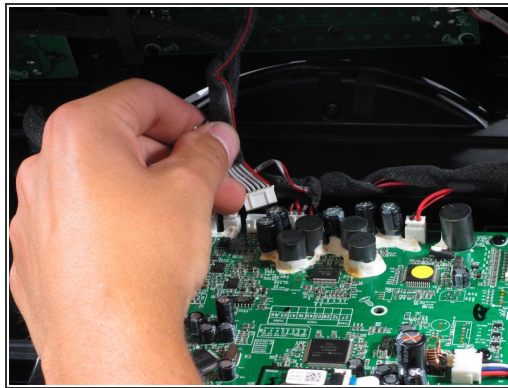
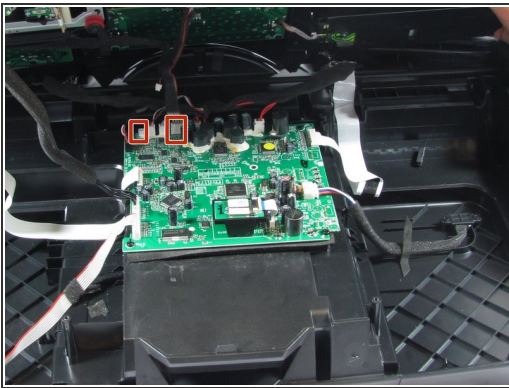
- Disconnect the CD drive ribbon cable from the top of the device.

Step 7



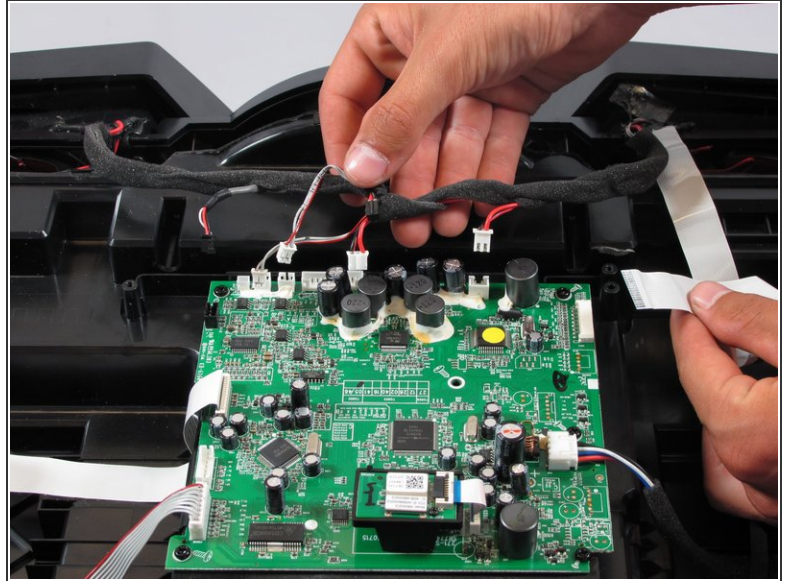
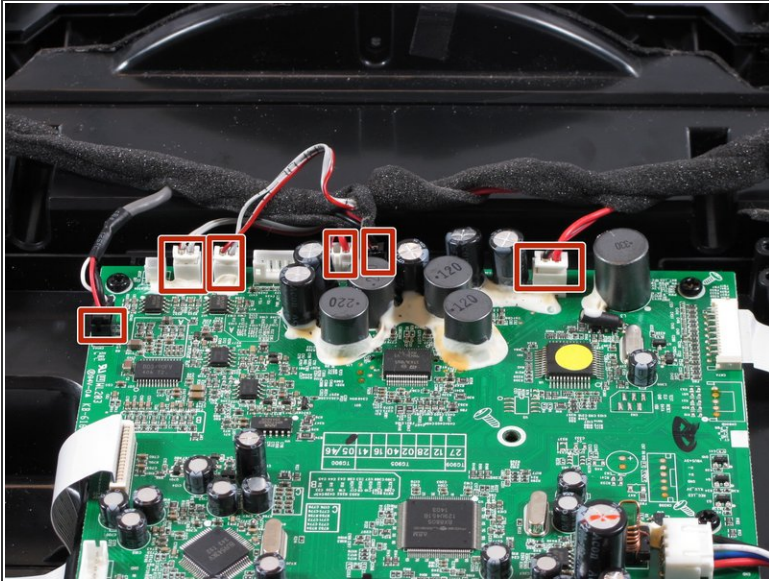
- Disconnect the antenna cables.

Step 8



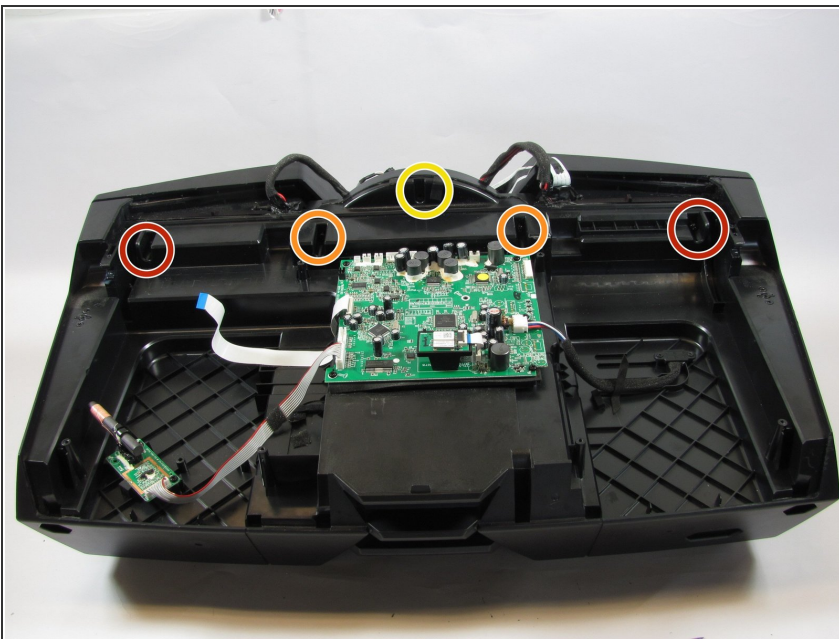
- Disconnect the remaining cables from the motherboard.

Step 9



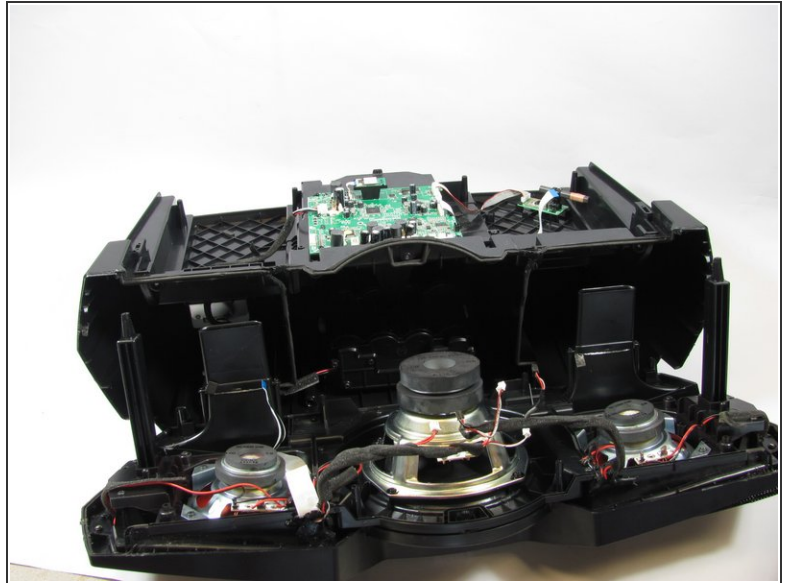
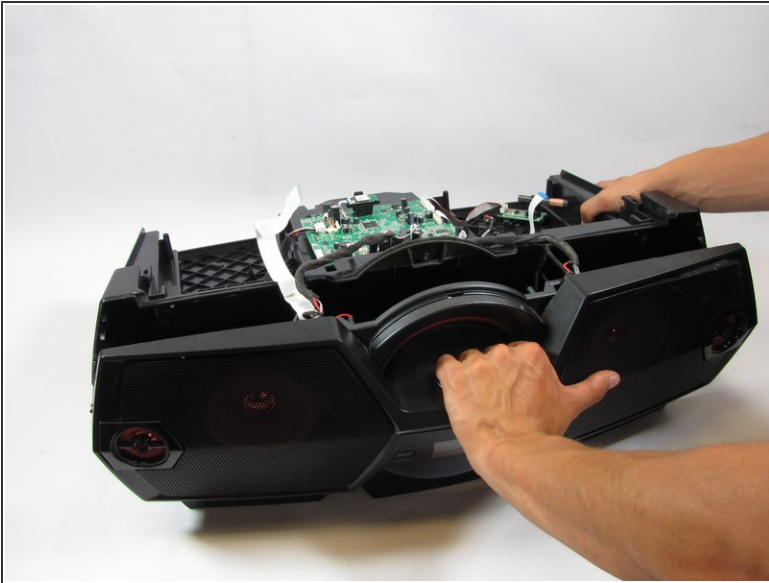
- Once you have removed the top, we will begin removing the front of the device.
- Begin by disconnecting the 6 cables that lead from the front of the device to the motherboard.

Step 10



- Use your Philips #2 screwdriver to remove the two 1 inch screws on the outermost part of the device.
- Use your Philips #2 screwdriver to remove the two 3/4 inch screws on the outermost part of the device.
- Use your Philips #2 screwdriver to remove the one 5/6 inch screw on the middle part of the device.

Step 11



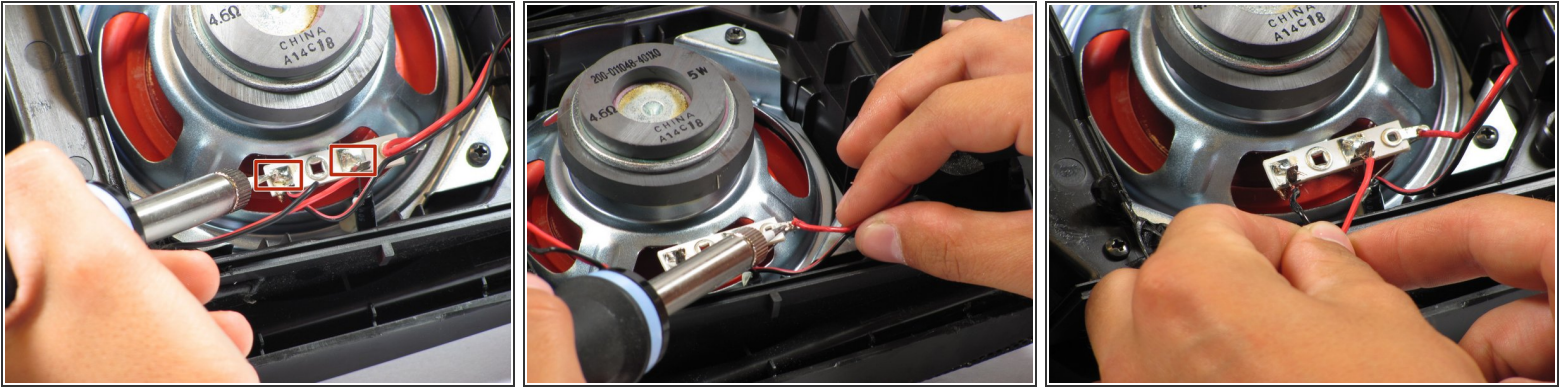
- Firmly pull off the front of device.
 - ❗ There will be a small amount of black glue. You can simply ignore this, and continue to pull, or use a sharp edge to cut the glue once you've revealed it.

Step 12 — Speaker



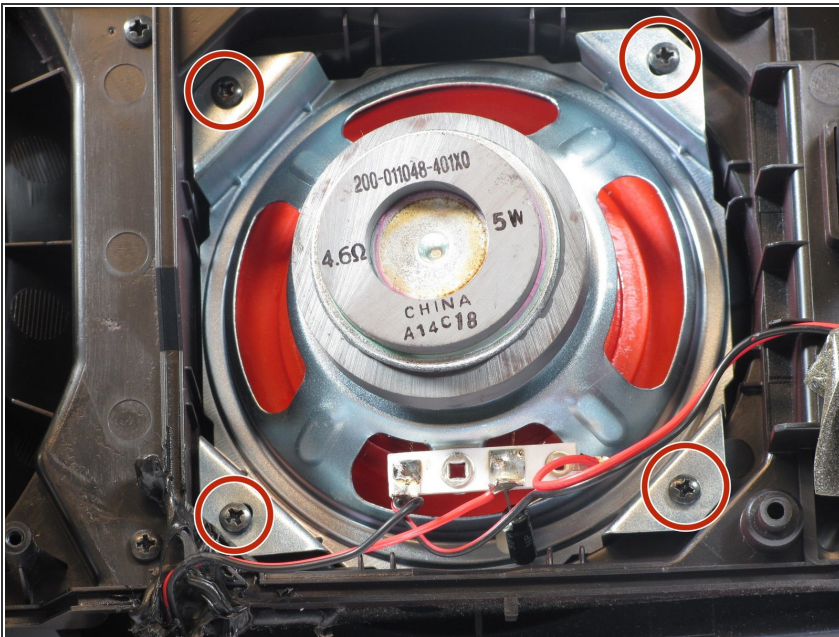
- This guide will be for the two speakers seen on the left and right of the image.

Step 13



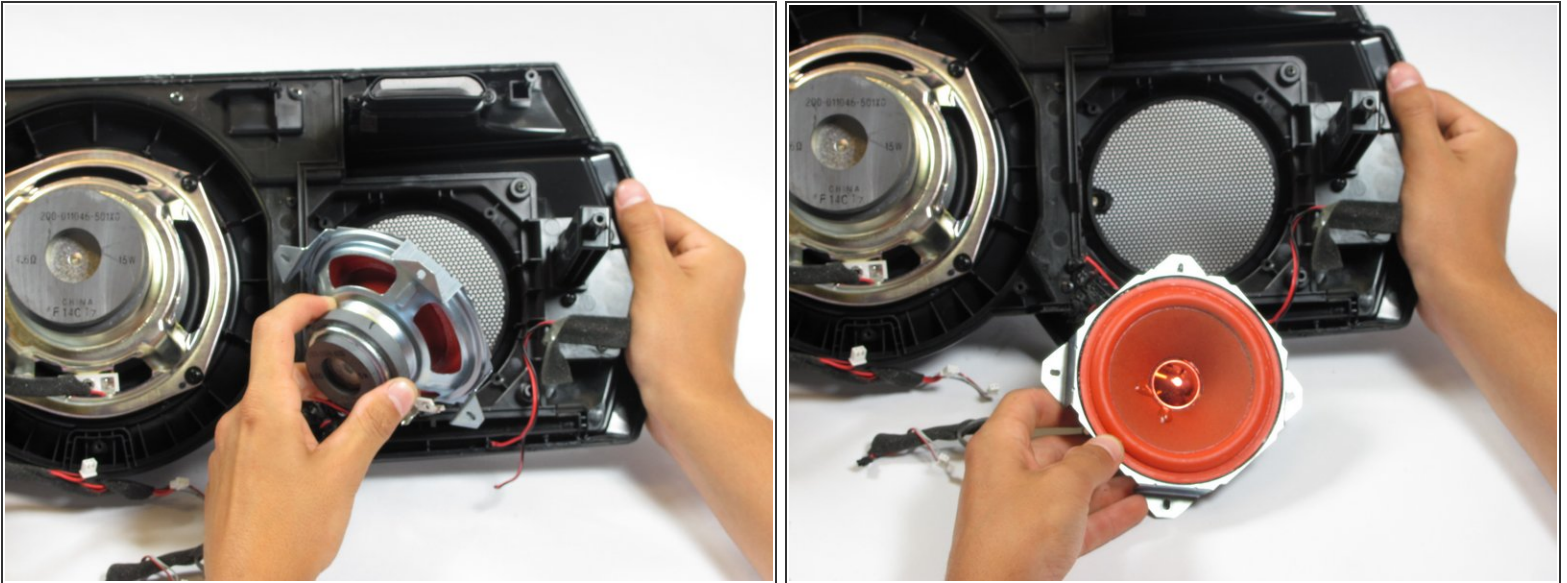
- Begin by desoldering the connector wires off the metal plate at the bottom of the speaker.
- Be sure to note where each wire will be resoldered when you have your new speaker in place.

Step 14



- Use a Phillips #2 screwdriver to remove the 1/2 inch screws.

Step 15



- With the wires and screws removed, firmly grab the top of the speaker.
- Pull up and away to remove the whole speaker.

To reassemble your device, follow these instructions in reverse order.