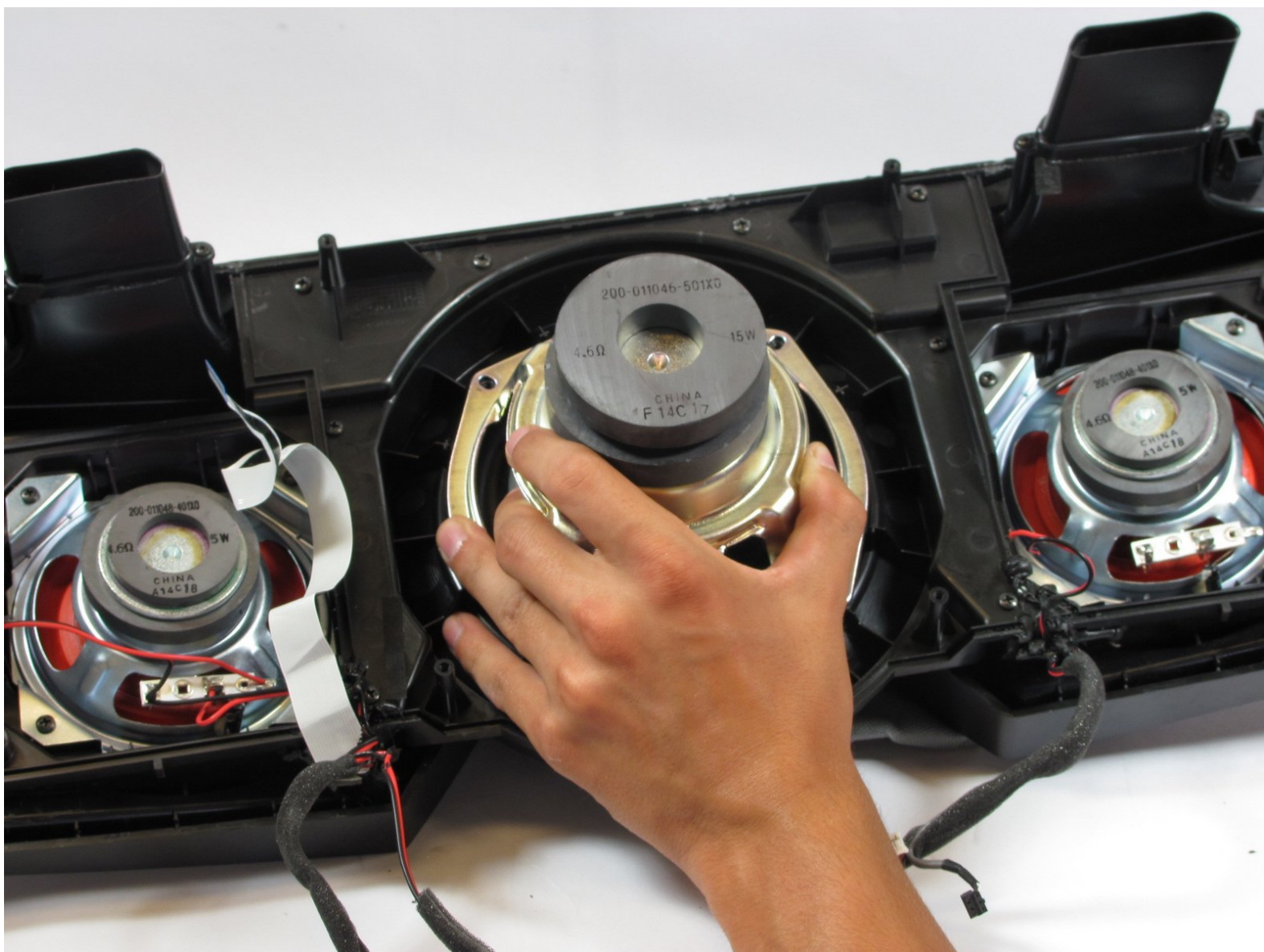




# SONY ZS-BTG900 Subwoofer Replacement

This guide will show you the steps required to replace the central subwoofer on your device,

Written By: Alfredo Rodriguez



---

## INTRODUCTION

Subwoofers are notorious for blowing out. Consistent use at low frequencies result in a short life span for these parts.

This guide will show you how to replace the subwoofer instead of having to throw out you entire device. A replacement subwoofer can be found online or salvaged from another device.



### TOOLS:

- [iFixit Opening Tools](#) (1)
  - [Phillips #2 Screwdriver](#) (1)
  - [Soldering Iron](#) (1)
-

## Step 1 — SONY ZS-BTG900 Disassembly



- Lift up the handle to reveal the screws.
- Use your Phillips #2 screwdriver to remove the eight 1/2 inch screws.

## Step 2



- Flip your device over.
- Use your Phillips #2 screwdriver to remove the six 3/4inch screws.
- ⓘ In removing the screws within the two holes on the back of the device, you may want to use your shaft extension to provide extra torque as they may be very tight.



### Step 3



- Flip your device back over to access the top of the device.
- Use your plastic opening tool to pry up and remove the panel on the top, left hand side of the device.
- ⓘ This will reveal two additional screws.

### Step 4



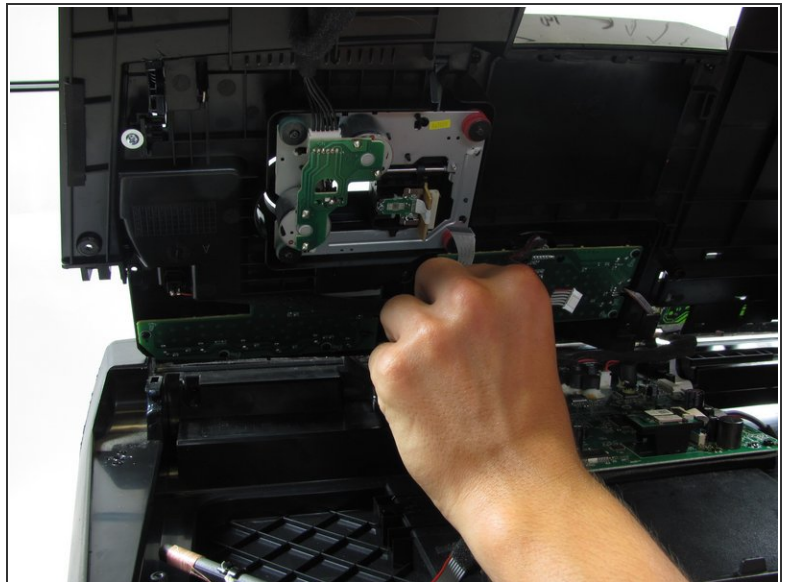
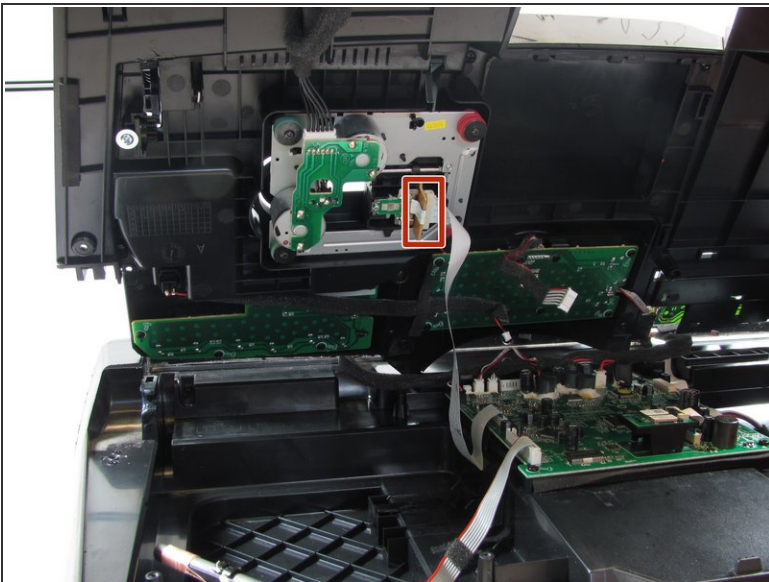
- Use your Phillips #2 screwdriver to remove the two 1/2 inch screws underneath the now-removed panels.

## Step 5



- Lift off the top, beginning from the back of the device.
- ⓘ Take care when lifting the top portion as there are many wires connected to the inside of the device and you do not want to disconnect these just yet.

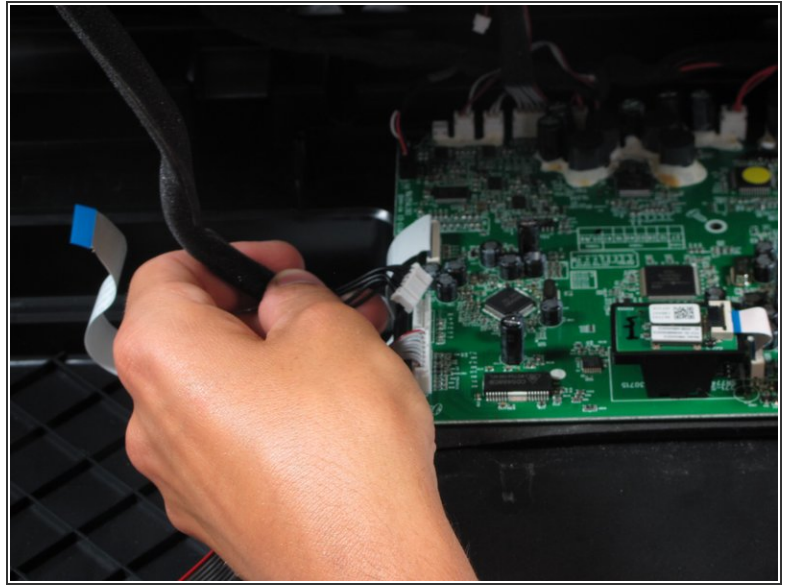
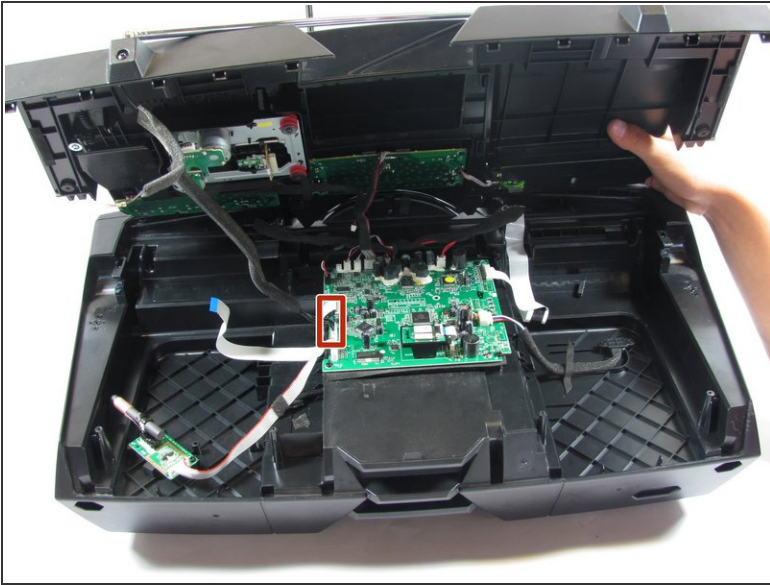
## Step 6



- Disconnect the CD drive ribbon cable from the top of the device.

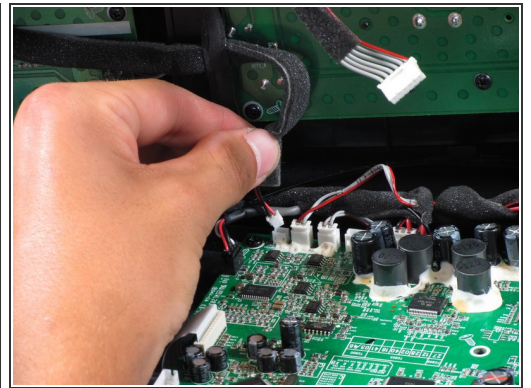
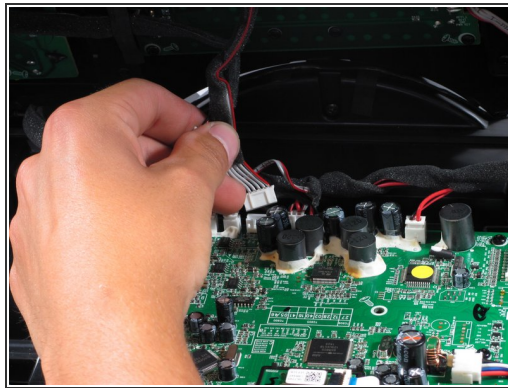
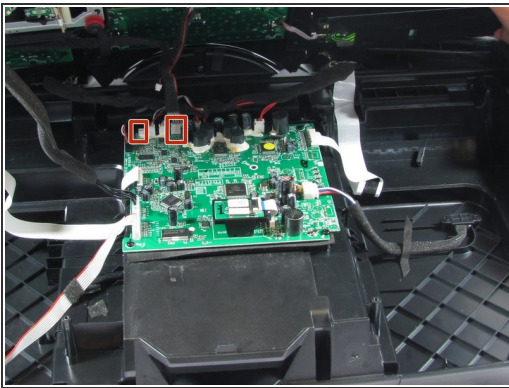


## Step 7



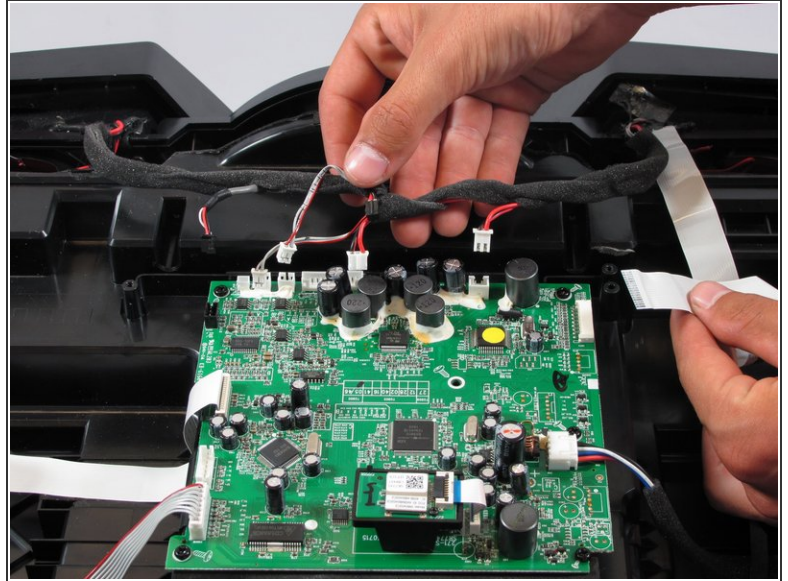
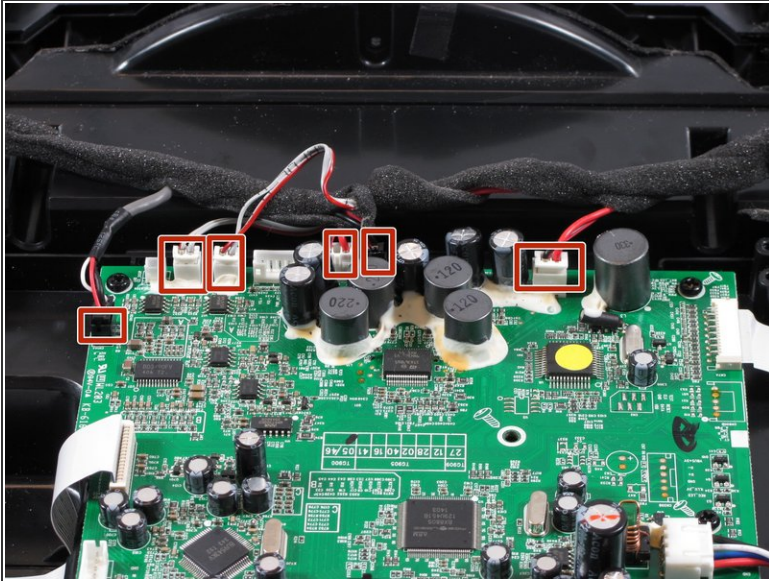
- Disconnect the antenna cables.

## Step 8



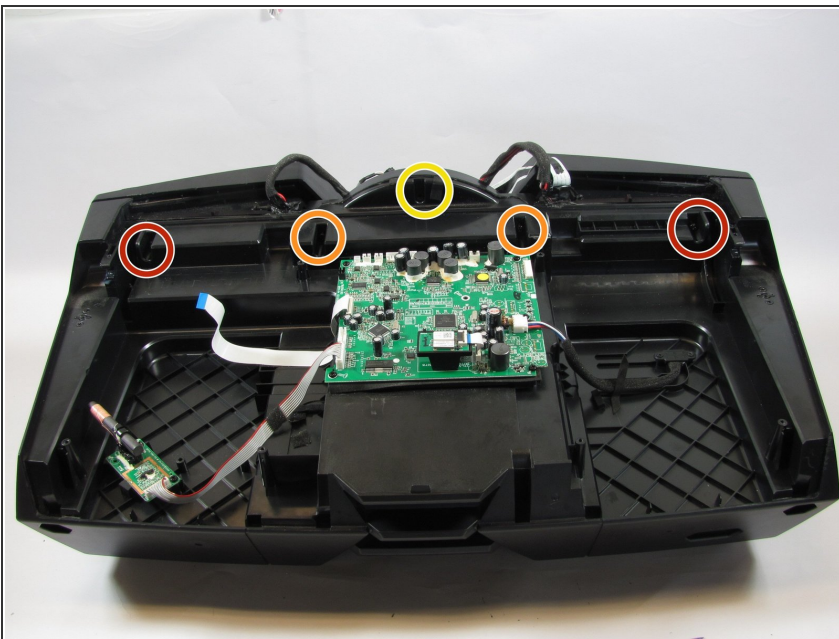
- Disconnect the remaining cables from the motherboard.

## Step 9



- Once you have removed the top, we will begin removing the front of the device.
- Begin by disconnecting the 6 cables that lead from the front of the device to the motherboard.

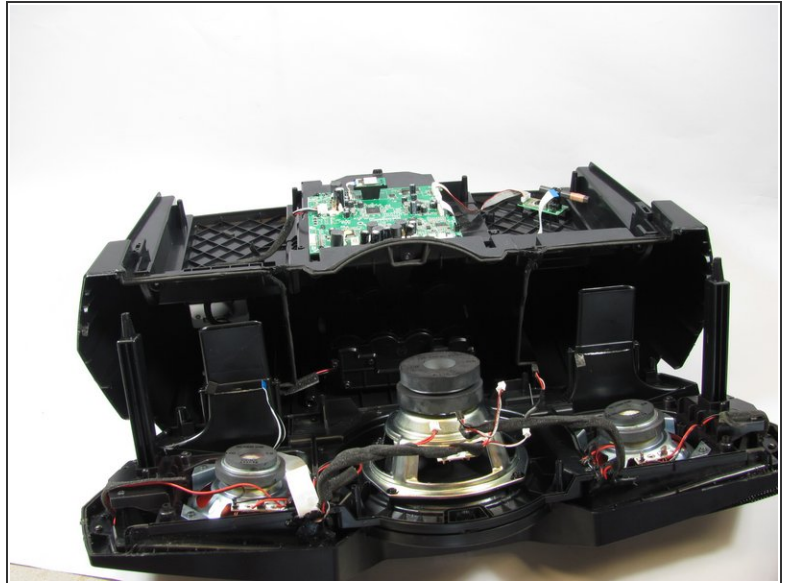
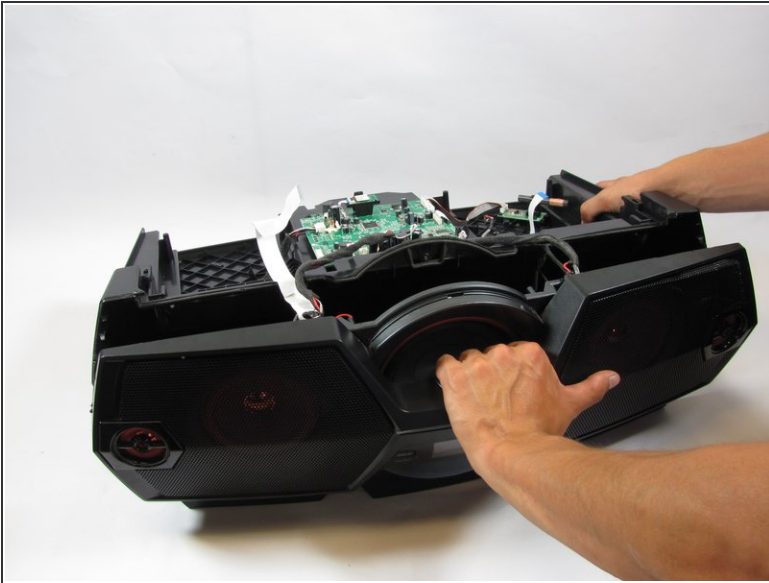
## Step 10



- Use your Philips #2 screwdriver to remove the two 1 inch screws on the outermost part of the device.
- Use your Philips #2 screwdriver to remove the two 3/4 inch screws on the outermost part of the device.
- Use your Philips #2 screwdriver to remove the one 5/6 inch screw on the middle part of the device.



## Step 11



- Firmly pull off the front of device.
- ❗ There will be a small amount of black glue. You can simply ignore this, and continue to pull, or use a sharp edge to cut the glue once you've revealed it.

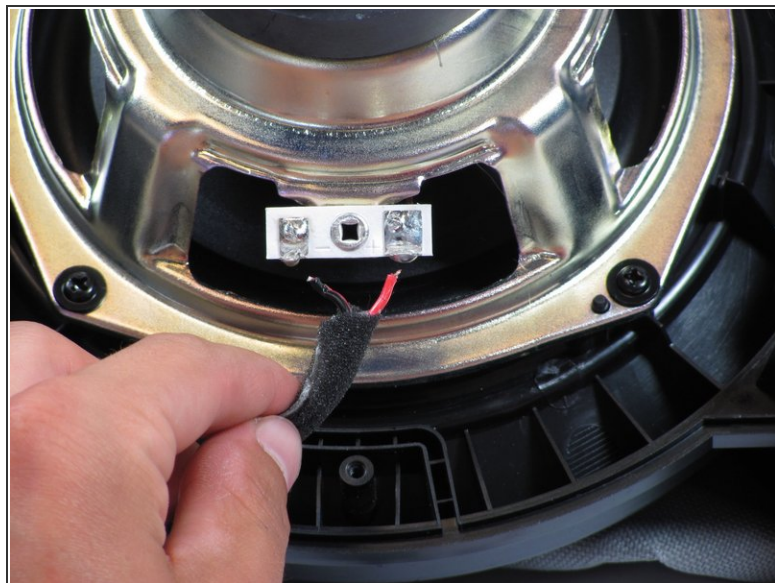
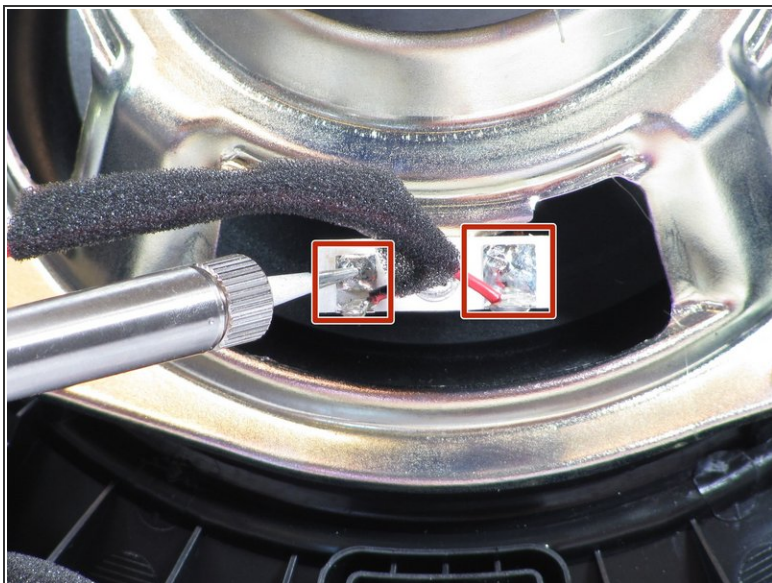
## Step 12 — Subwoofer



- Begin with the front component after the disassembly prerequisite.
- This guide is for the subwoofer seen in the middle of this image.

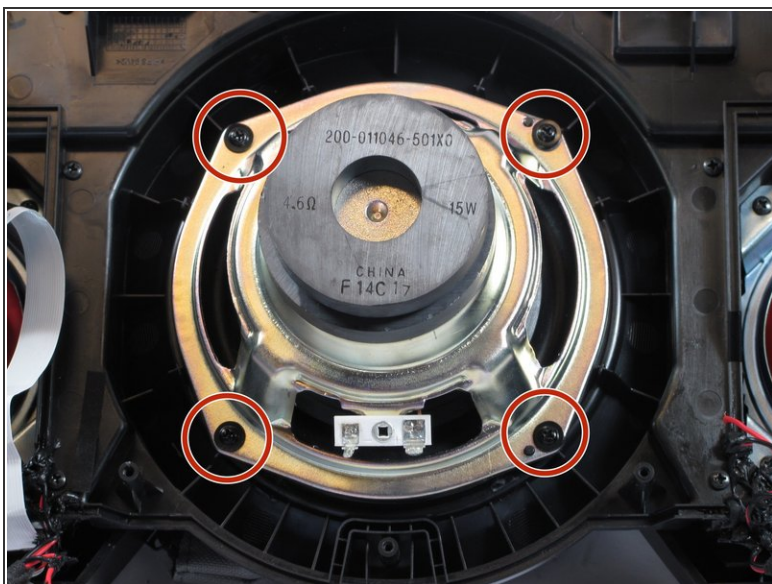


## Step 13



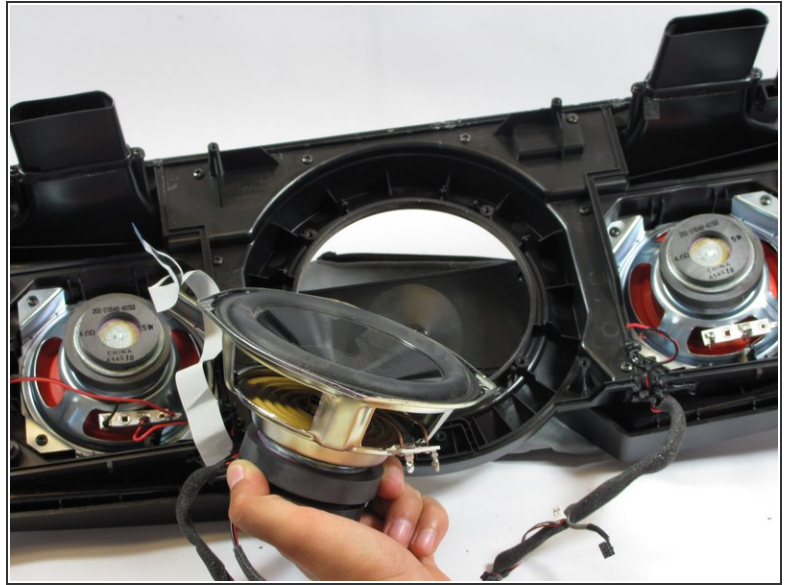
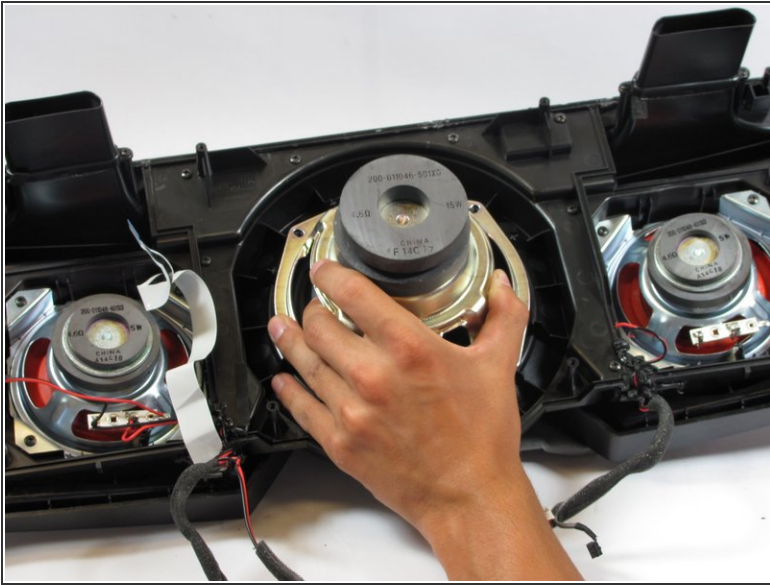
- Desolder the two connector wires off the bottom plate on the speaker.
- Note where each cable connects.

## Step 14



- Remove the four 1/2 inch screws using a #2 Phillips screwdriver.

## Step 15



- Firmly grab the end of the subwoofer.
- Pull up and out to remove it.

To reassemble your device, follow these instructions in reverse order.