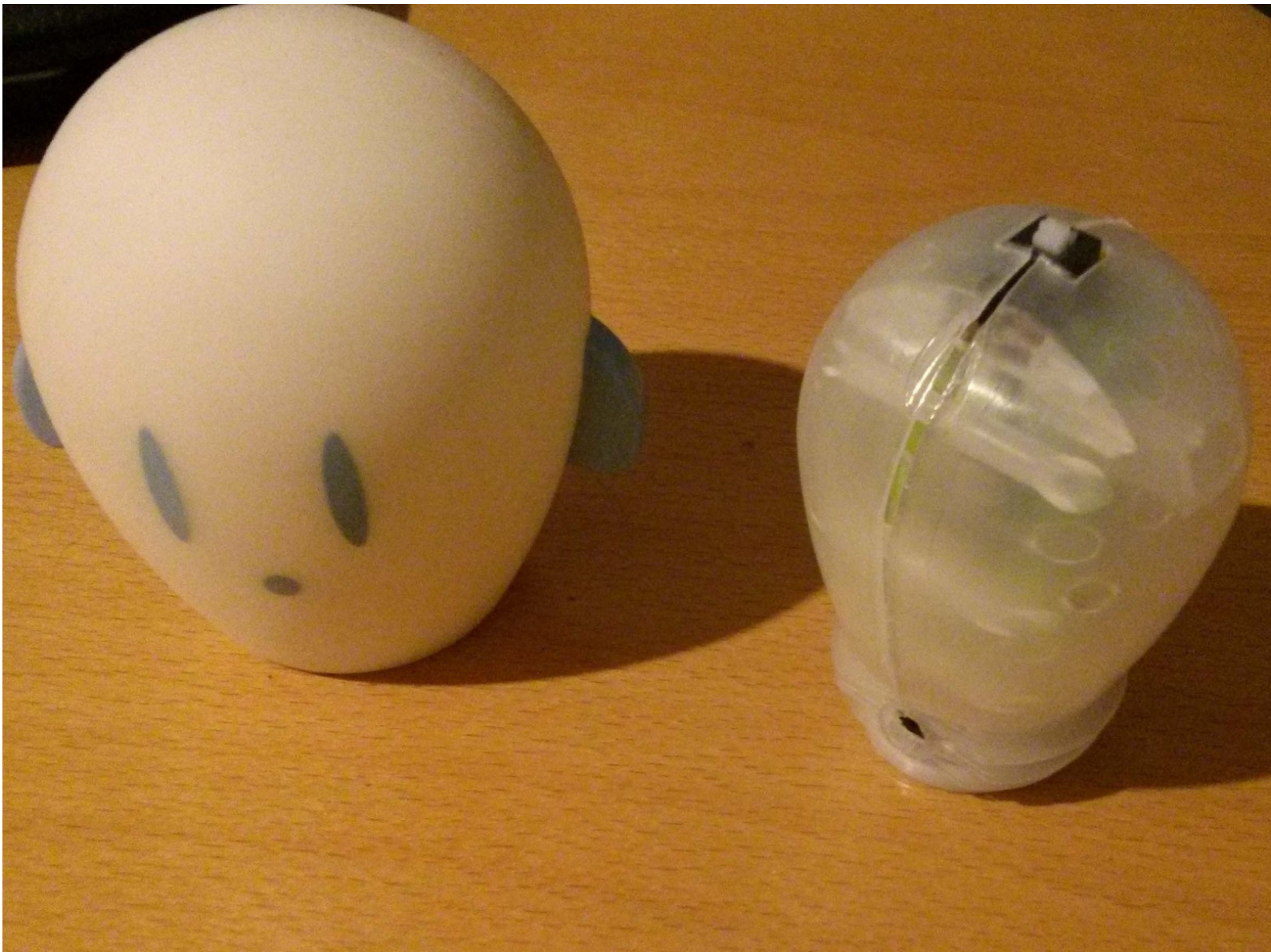




SPÖKA IKEA Battery Replacement

How to open a SPÖKA, how to replace the battery pack, how to put it all back together

Written By: Colin



INTRODUCTION

How to open a SPÖKA light, how to replace the battery pack, how to put it all back together.



TOOLS:

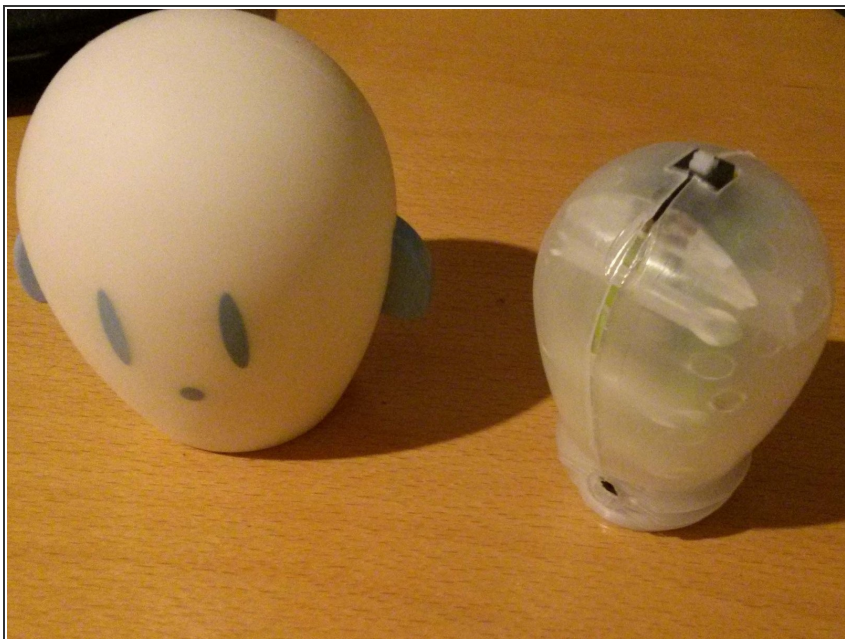
- [Soldering Workstation](#) (1)
- [hot glue gun - or other glue](#) (1)



PARTS:

- [3x AAA battery](#) (1)
- [Zip Ties](#) (1)

Step 1 — Battery replacement



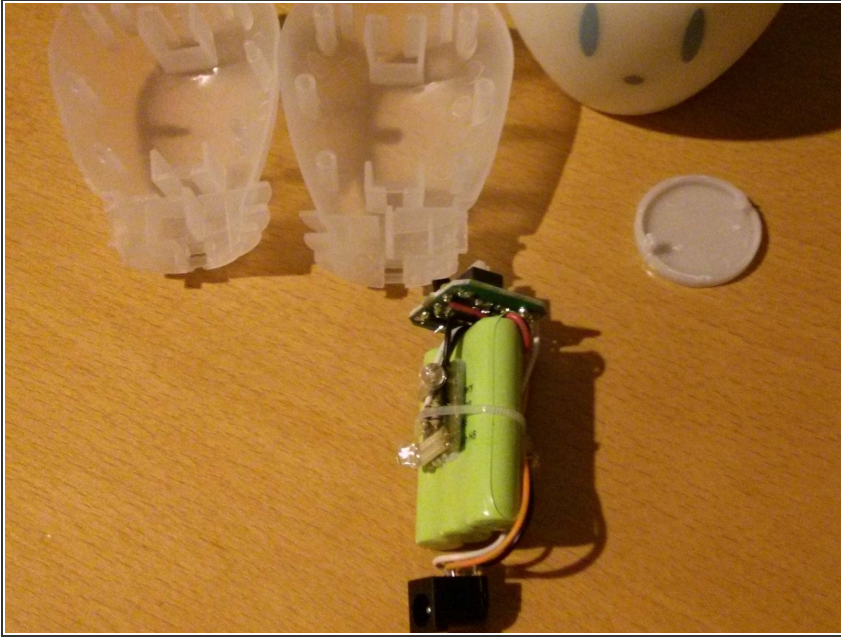
- The most tricky part is to get the inner body out of the rubber shell.
- I was surprised. The rubber can actually take some stretching
- you end up with an egg shaped plastic body

Step 2



- Now we need to remove the bottom cap.
- carefully bend the two hooocks inwards (e.g. with a small screwdriver) ad remove it
- Now you can split the the body into two

Step 3



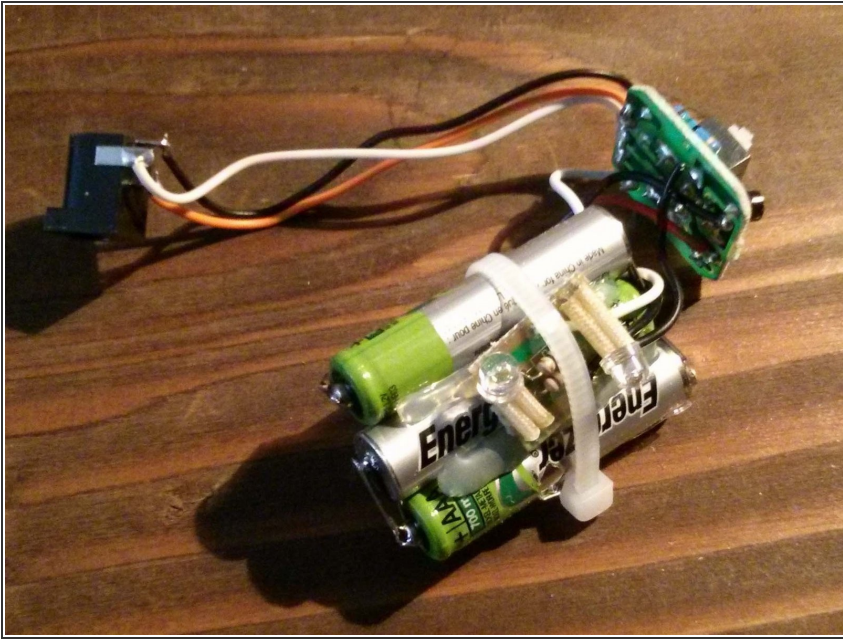
- you now can extract the battery pack.
- on top you see the little switch to turn it on and off.
- the LED are strapped with a cable tie around the battery
- at the bottom lies the connector for recharging

Step 4



- remove the cable tie
- remove the wrapping of the battery pack
- desolder the two cables from the pack
- now it should look like the pack on the right
- glue the new batteries together. - keep in mind, to alter the ends.
- at the end you should have a new pack with (+) (-) (+) at one end and (-) (+) (-) at the other

Step 5



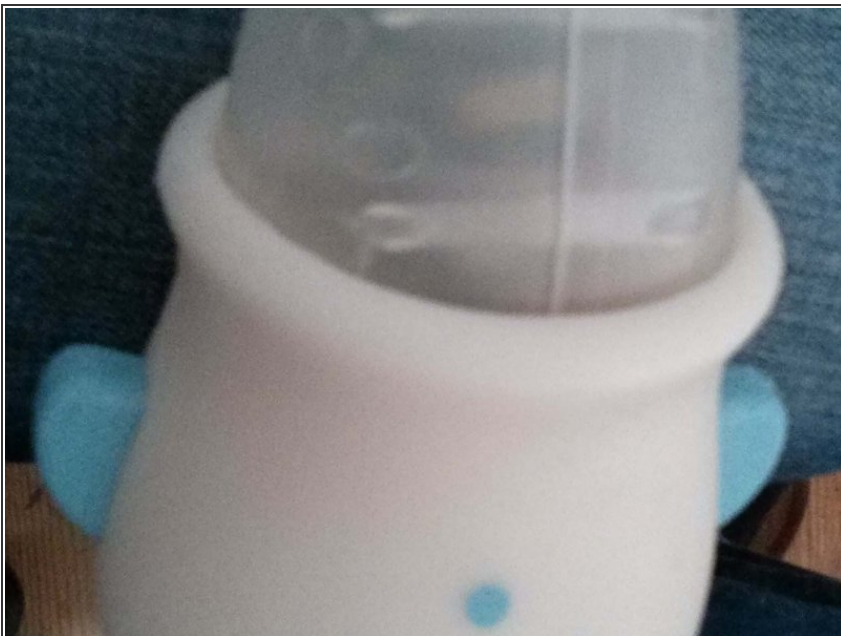
- this is the tricky part.
- the new pack should be facing you with (+) (-) (+)
- solder the right (+) to the (-) in the middle
- Solder the upper left (-) to the (+) in the middle
- I used some old wire for it
- Now solder the short black wire to the upper (-). It must be the only (-) with no connection yet
- Solder the red long wire to the lower left (+). Also this must be the only (+) left without any connection
- let it cool off

Step 6



- Use the cable tie to strap the LED back to the battery pack
- isolate the open ends of the batterypack. It must not be able to create a short circuit. I used the hot glue. but also some thick rubber tape can do the job
- put it back together in the shell
- be aware to place the switch and the connector for recharging on the right places

Step 7



- Now its getting ugly again.
- you have to put the shell back into the rubber
- this could take a while
- Be aware to put the connector on the right side, so you are able to recharge it again

Step 8



- Switch it back on and enjoy the bright light
- Please remember that you altered a electric device.
- never let your new spöka charge unattended and keep a good eye on it for short circuits

be aware that you altered an electric device!!!

If you do not know what you are doing... dont to it