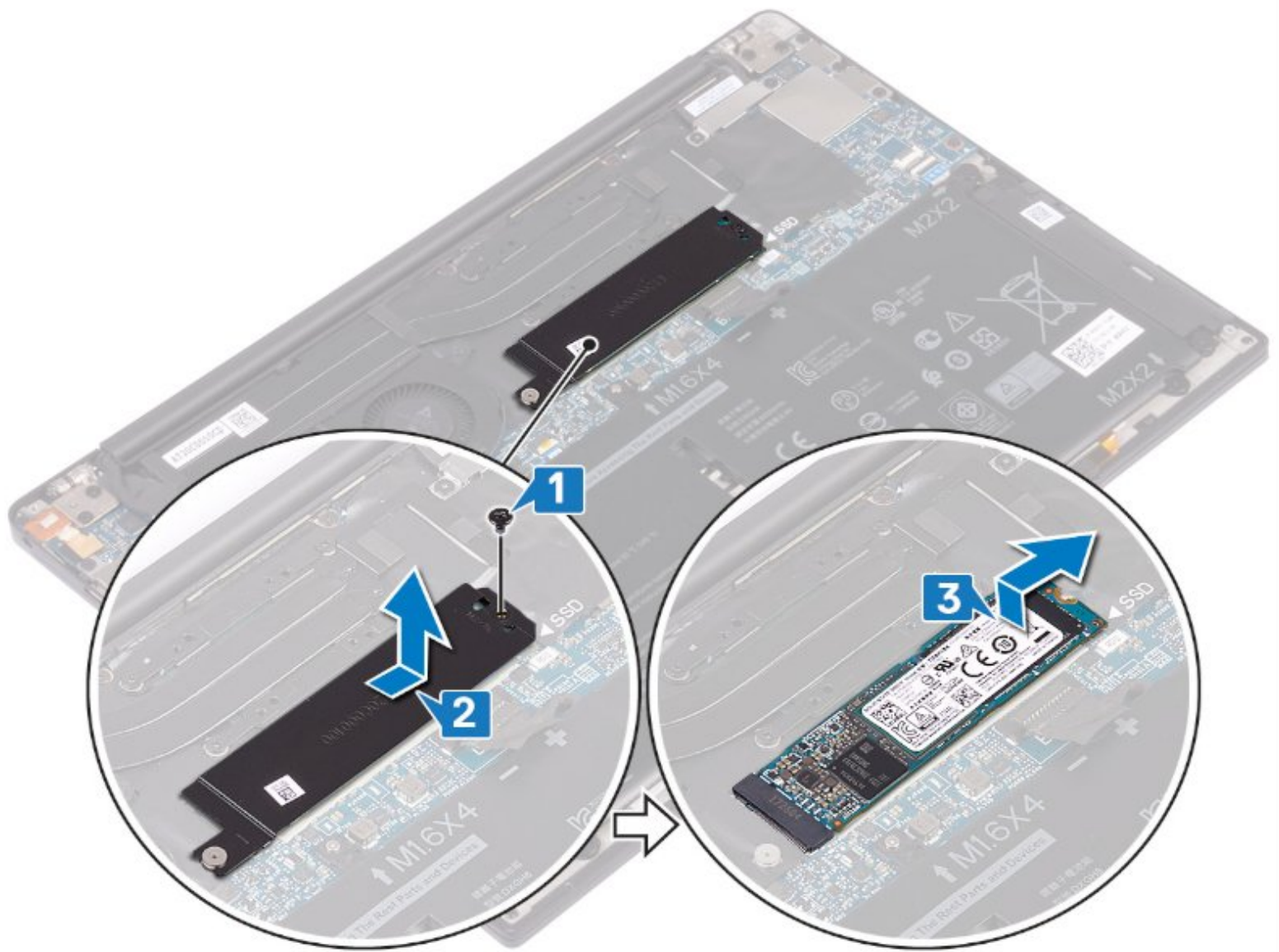




SSD replacement on a Dell XPS 13 9380

This guide explains how to replace the SSD on your Dell XPS 13 9380.

Written By: Schwarzer



INTRODUCTION

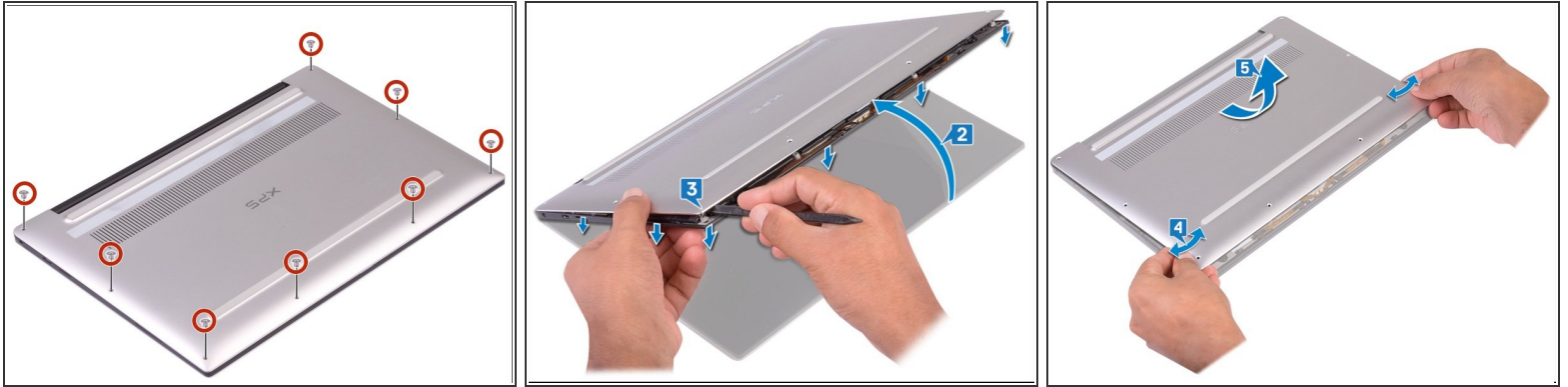
You need to disconnect or replace the SSD from your Dell XPS 13 9380, this guide is for you!



TOOLS:

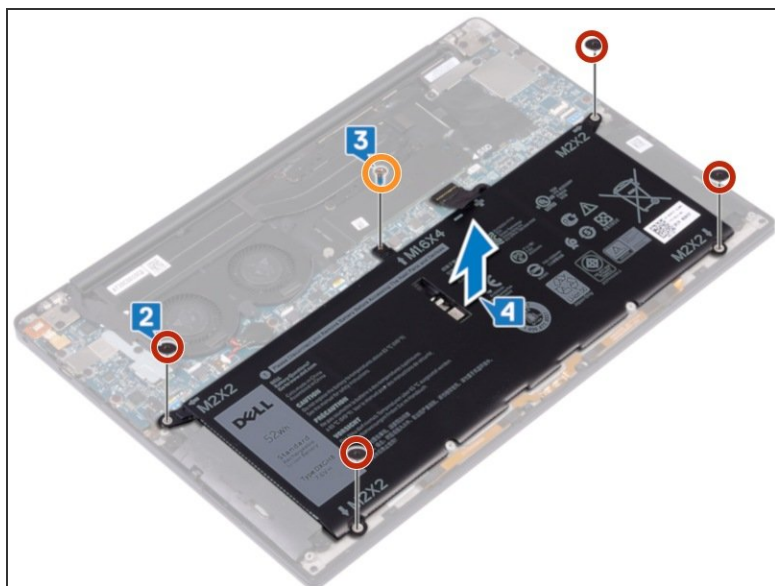
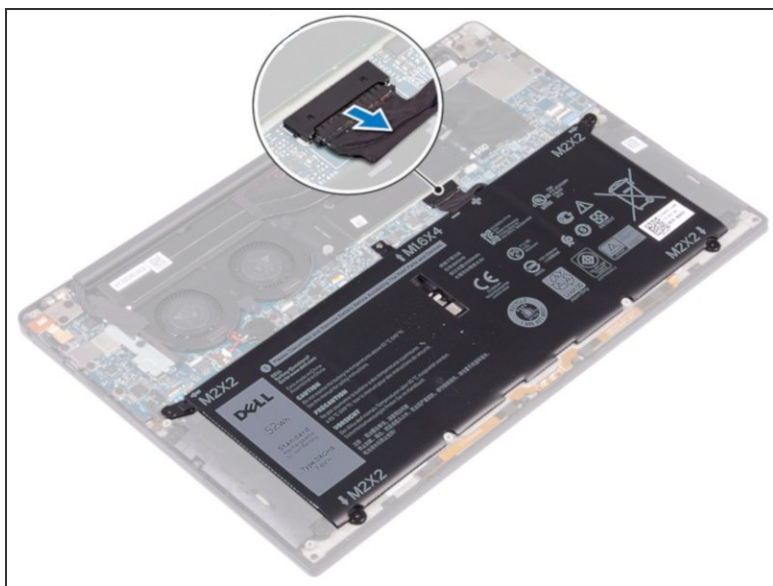
- [Mako Driver Kit - 64 Precision Bits](#) (1)
-

Step 1 — Remove the back panel



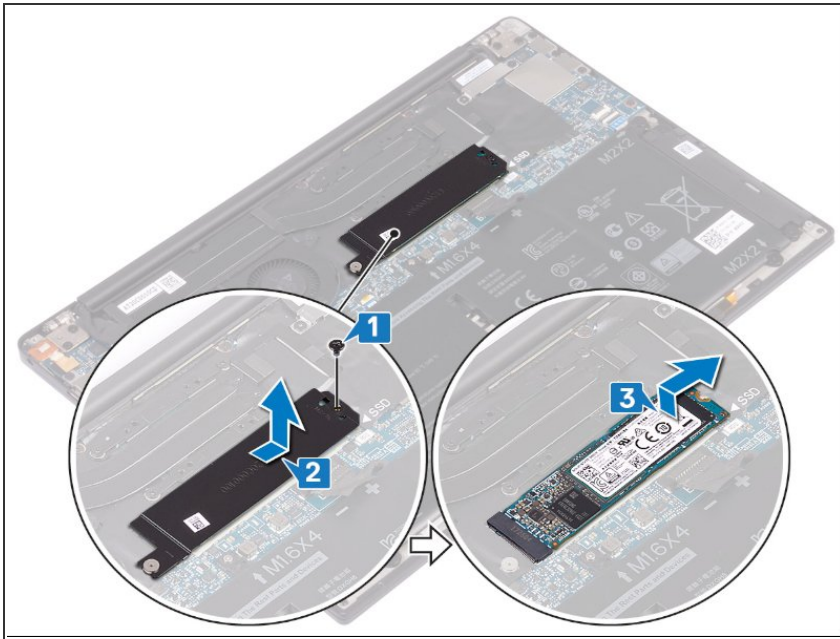
- Unscrew the eight screws (Torx M2x3) that attach the back panel.
- Turn the computer over, then open it by tilting it.
- Using a Spudger, lever on the back panel.
 - By sliding the back panel from left to right, release the clips that attach it. This way you can remove it

Step 2 — Remove the battery



- 1- Disconnect the cable from the battery.
- 2- Remove the four screws (M2 x 2) that attach the battery.
- 3- Remove the screw (M1.6 x 4) that fixes the battery.
- 4- Remove the battery from its place.

Step 3 — Remove the SSD



- ★ We removed or disconnected the battery to avoid any electrical discharge.
- 1- Remove the screw (M2x3) that attaches the SSD and its protective frame to the motherboard.
 - 2- Slide the protective frame of the SSD disk slot protection frame and remove it from the SSD disk.
 - 3- Lift the SSD at an angle, then slide it and remove it from its housing.

To reassemble your device, follow the instructions in reverse order.