



SVP 5800 Back Casing Replacement

This guide shows step-by-step how to properly remove the back casing for replacement.

Written By: Cheyenne Heinen



INTRODUCTION

How to replace the back casing to SVP Aqua 5800



TOOLS:

- [Phillips #000 Screwdriver](#) (1)
 - [Phillips #00 Screwdriver](#) (1)
 - [Metal Spudger](#) (1)
 - [iFixit Opening Tools](#) (1)
 - [Phillips #0 Screwdriver](#) (1)
-

Step 1 — Strap Hook



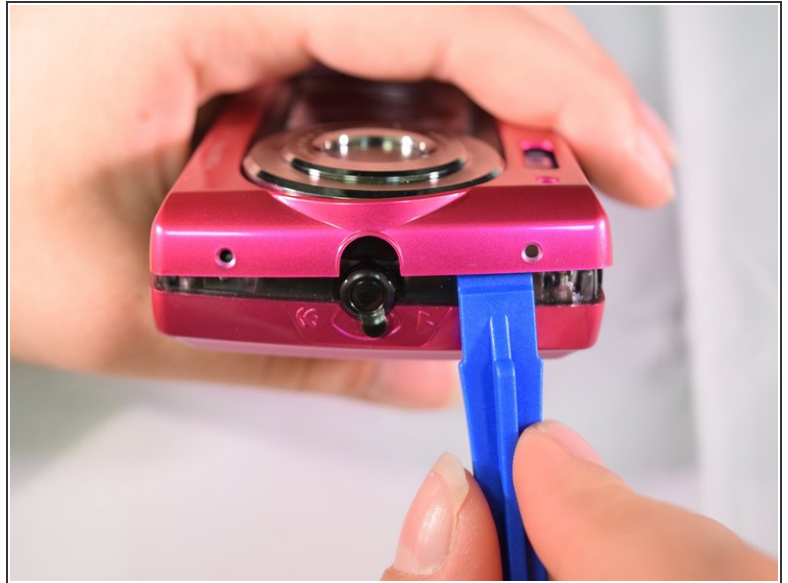
- Locate the two 3.5 mm screws on the side of the device.
- Apply pressure to the PH J000 philips head screwdriver and turn in a counter clockwise motion until the screw becomes loose enough to pull out.

Step 2 — Front Casing



- Once you have properly removed the strap hook, locate the two 3 mm screws located on the opposite side of the strap hook.
- ⓘ Refer to the prerequisite guide on removing the strap hook for instructions.
- Place the PH J000 philips head screwdriver on the head of screw; apply pressure and turn in a counter clockwise motion until screws come loose.

Step 3



- Place the plastic opening tool on the crack between the front and back casings.
- Apply pressure by pulling down on the plastic opening tool to pry the case apart.

Step 4



- Wedge your fingers in the opening and slowly pull the front casing away from the bottom casing until it completely separates from the device.



Using too much force in this step can damage your device.

This document was generated on 2019-09-18 11:49:59 PM (MST).

Step 5 — Top button Compartment



- Insert the flat end of wide metal spudger into the seam of the plastic buffer surrounding the buttons and pry it open.

Step 6



- Use A #00 Phillips head screwdriver and turn counterclockwise to remove the four indicated screws.
- Set the screws aside.

Step 7



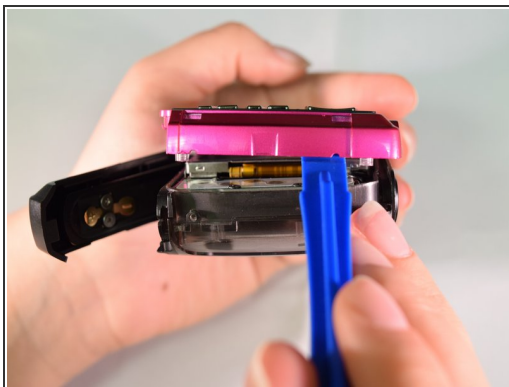
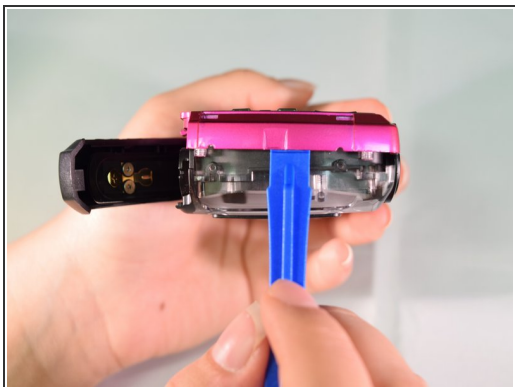
- Apply pressure and turn counterclockwise to remove the indicated 2.5 mm screw.

Step 8 — Back Casing




- Locate the 2 mm screw that is next to the battery compartment.
- Using the PH J000 phillips head screwdriver, apply pressure to the screw head and turn in a counter clockwise motion until the screw is loose.
- ⓘ You do not have to completely remove the 2 mm screw. To prevent losing the screw, you may leave it loosely in its place.

Step 9



- Slide the flat edge of the plastic opening tool between the inner casing and the back outer casing.
- Push up on the plastic opening tool so that the back casing starts to lift from the inner casing.

 Lifting the casing too far may result in damage. Lift the casing slowly.

To reassemble your device, follow these instructions in reverse order.