



Saeco Odeo brewing unit gasket replacement

Replacement of the gasket on Saeco Odea coffee machine brewing unit.

Written By: VauWeh



INTRODUCTION

The gasket of the brewing unit has to withstand heavy usage. Especially the large O-Ring on the piston needs replacing from time to time. Fohle this guide to replace the gasket.

The pictures are taken from a Saeco Minuto, but the brewing unit is the same.



TOOLS:

- [T10 Torx Screwdriver](#) (1)



PARTS:

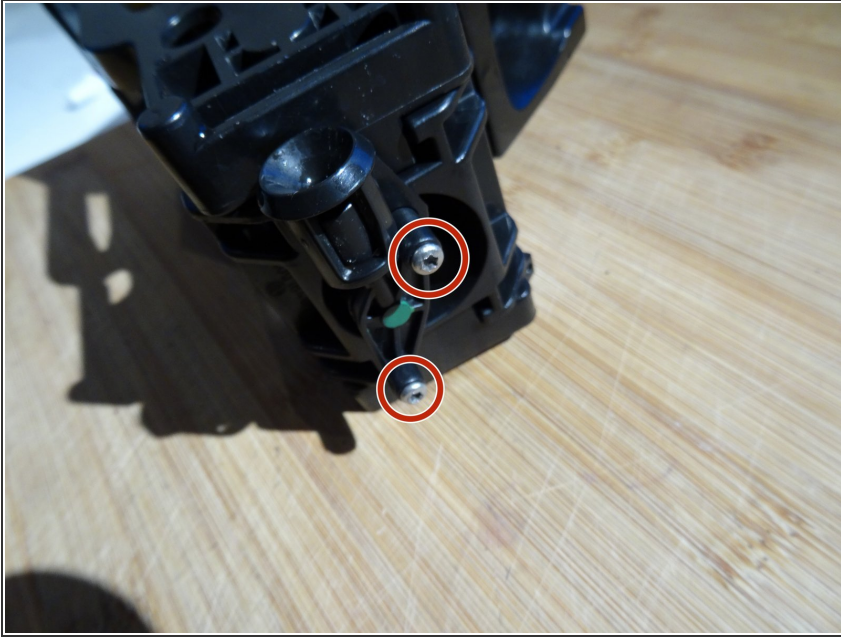
- [New Item](#) (1)

Step 1 — Brewing unit gasket



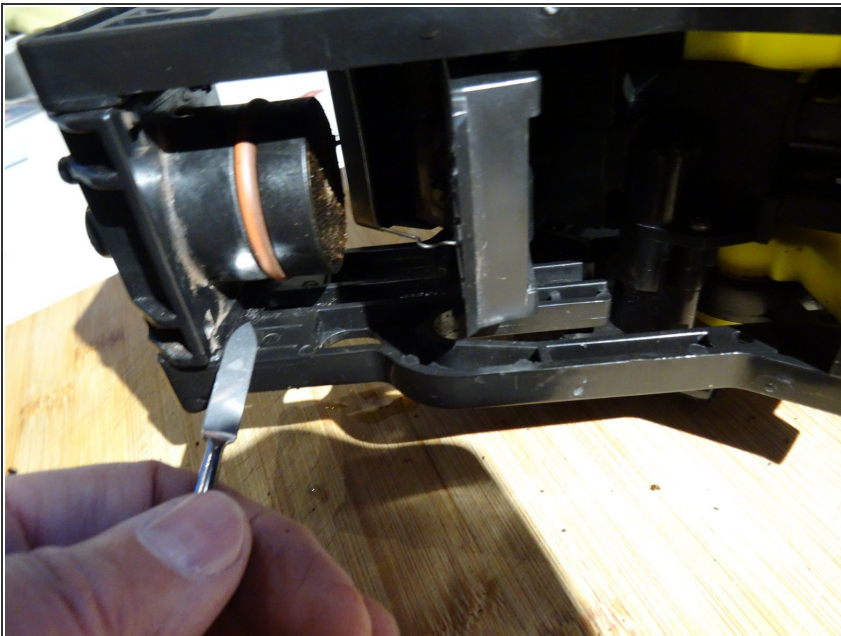
- Open the hatch on the side panel and remove the brewing unit.

Step 2



- **i** The spout for the hot coffee is located on the top of the brewing unit. It is fastened with two screws. Underneath is the crema valve. It consists of a spring and a little glass ball. Make sure the spring is reinserted with the *thin end* touching the glass ball when re-assembling.
- Remove the two Torx T10 screws on the crema valve.
- Lift off the crema valve minding the spring and the glass ball.

Step 3

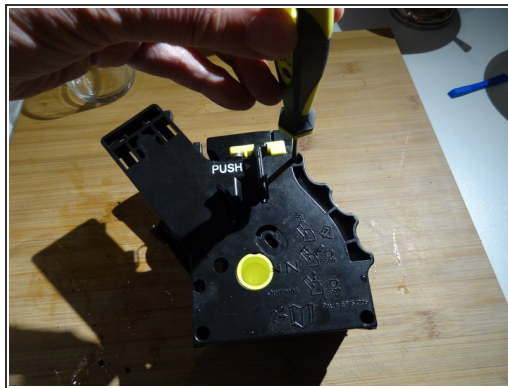
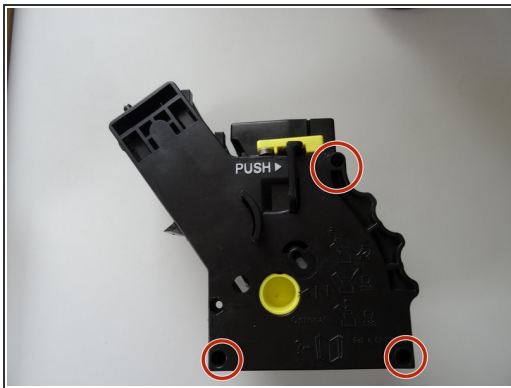


- The upper piston is held in place in the frame with four locking pawls. Push down all four latches with a

spudger, then remove the piston by pushing it downward.

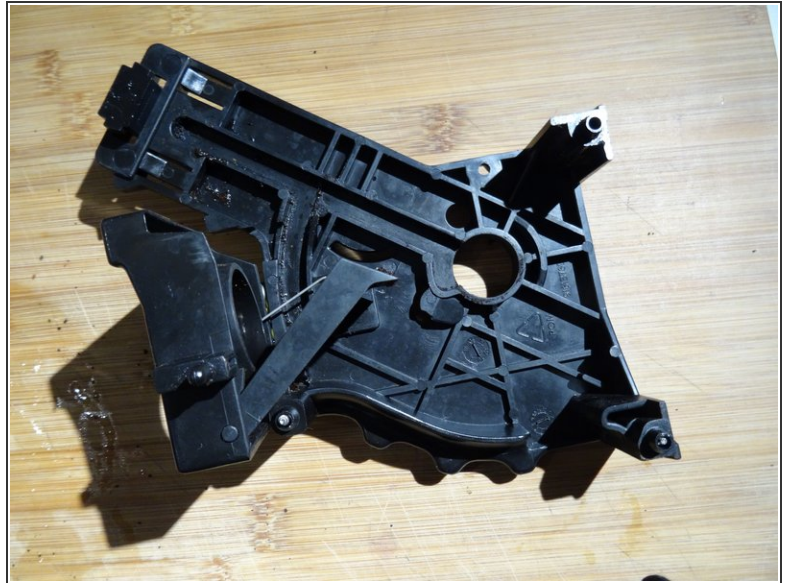
- ❗ If you want to replace the gasket, you can do this now and re-assemble the device and stop here. However, a general maintenance of the brewing unit is strongly recommended.
- Unscrew the Torx T10 screw on the brewing sieve and remove it.

Step 4



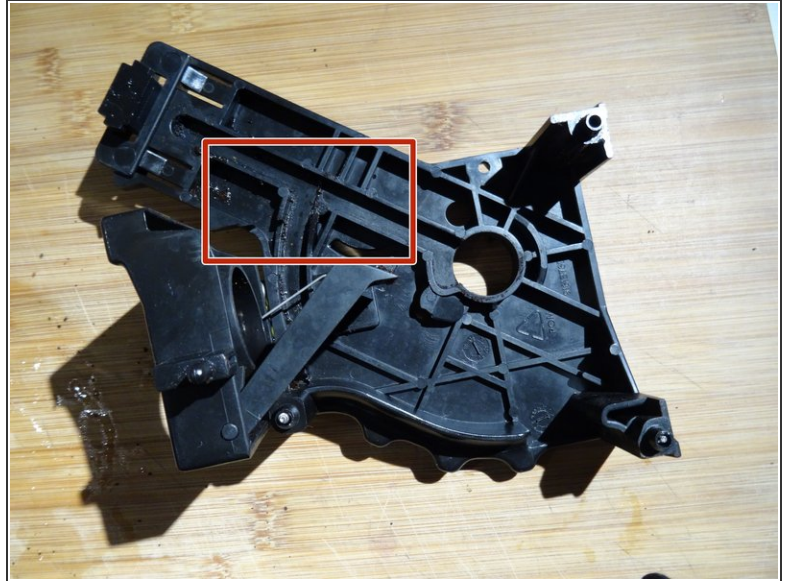
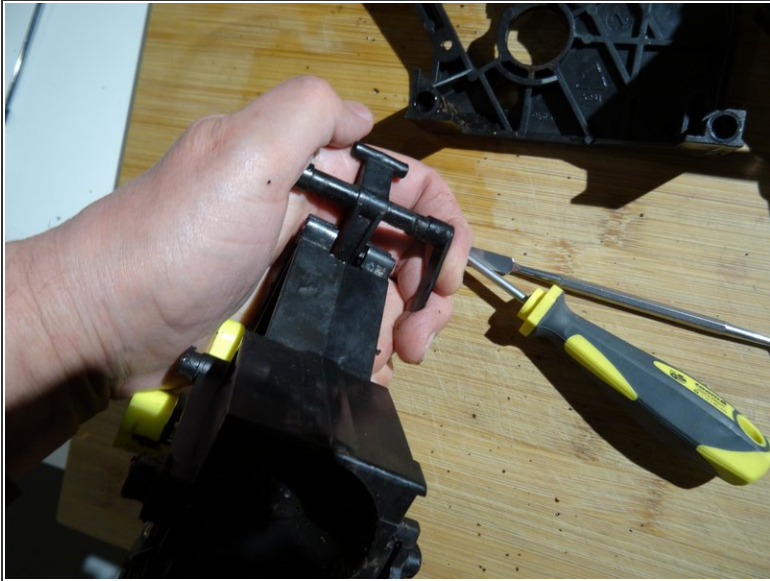
- There are three Torx T10 screws in deep blind holes that hold together the two parts of the brewing unit. Unscrew them and lift off the upper side panel.

Step 5



- Now you can disassemble the brewing unit into its three main parts: the brewing unit and the two side panels.

Step 6



- You can push out the lower piston from the brewing unit if you snap the deflection lever out of its socket with a screw driver.
- Clean all parts with very hot water and dishwasher liquid.
- Grease all moving parts with food grade silicone fat. Dont forget the tracks in the side panels.

Follow the steps in reverse order to reassemble your device.