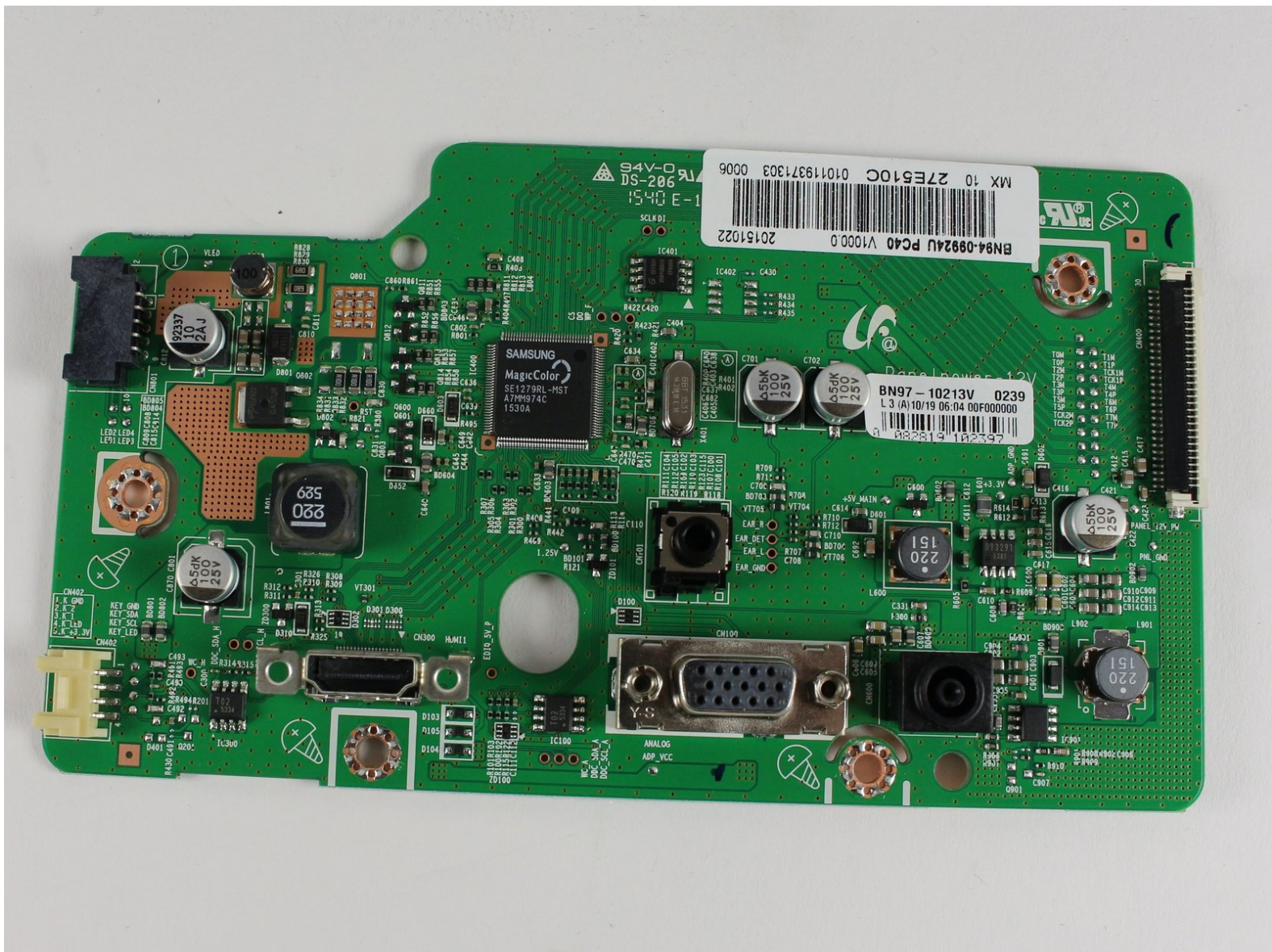




# Samsung 27E510C VGA Port Replacement

Replacing the VGA display port of a Samsung 27E510C monitor.

Written By: Jesus Blanco



## INTRODUCTION

The VGA Port allows for an external source to display an image onto the monitor by using a VGA cable. If the VGA Port is damaged, an image might not display onto the monitor.



### TOOLS:

- [Phillips #1 Screwdriver](#) (1)
- [Heavy-Duty Spudger](#) (1)
- [Soldering Iron](#) (1)
- [Desoldering Braid](#) (1)



### PARTS:

- [VGA Female Connector](#) (1)

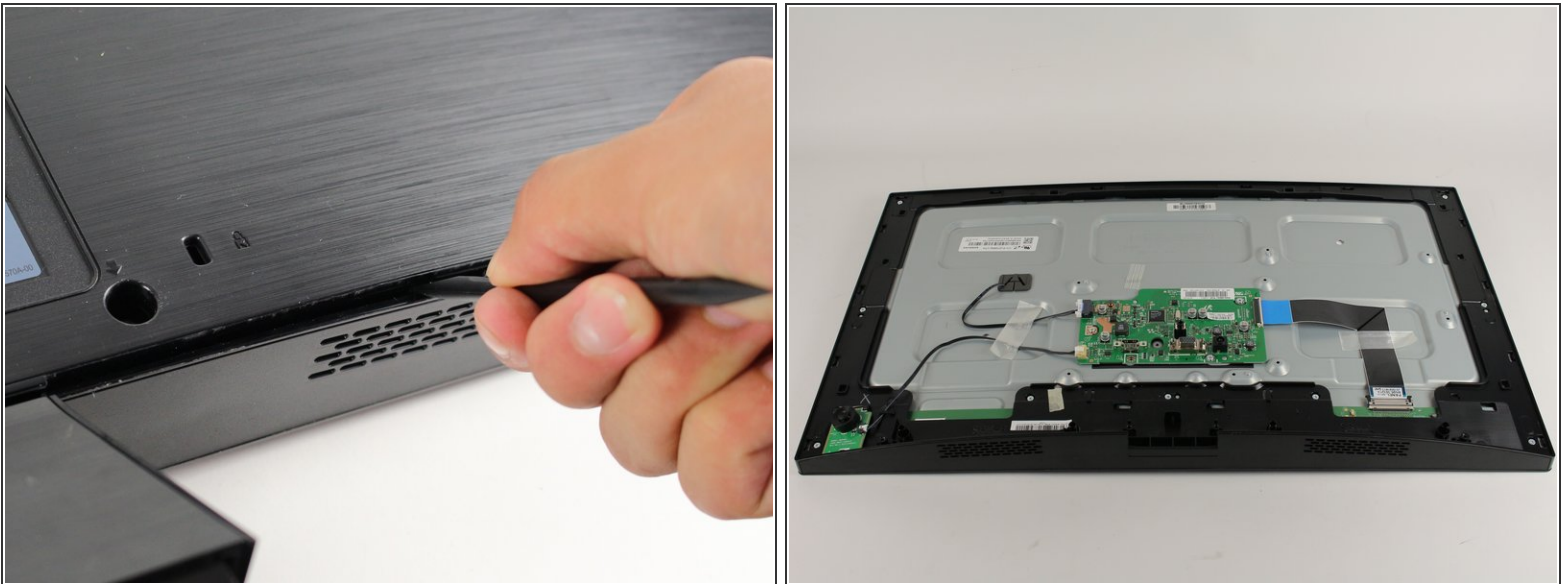
## Step 1 — Back Panel



- Use the #1 Phillips head screw driver to remove each 13.75mm length screw from the rear panel.

**i** The screw alone with the ports is a different size than the rest, its length is 12mm.

## Step 2

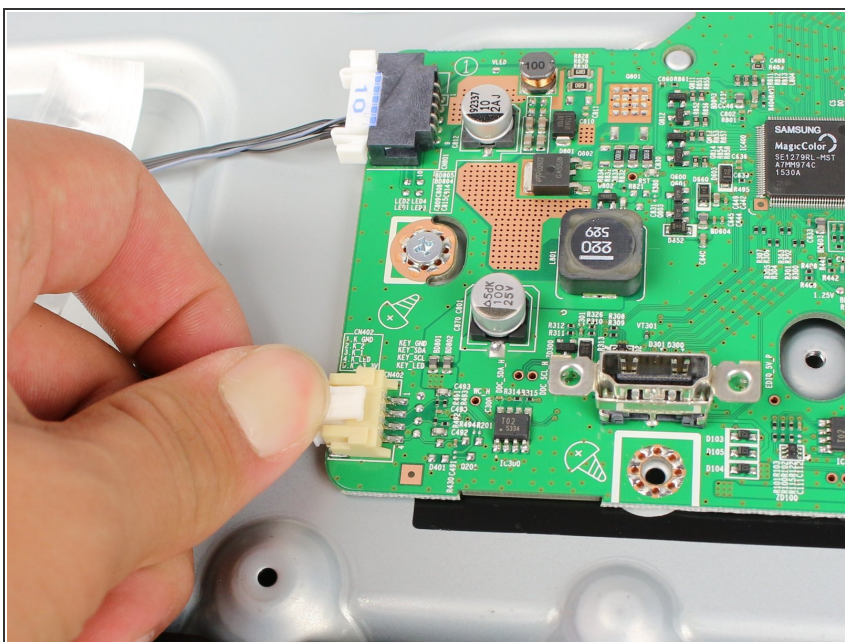


- Insert the heavy duty spudger in between the monitors back panel and its frame.
- Use the heavy duty spudger to pry open the back panel.

**!** Over aggressive prying could break the tabs holding the back panel in place.

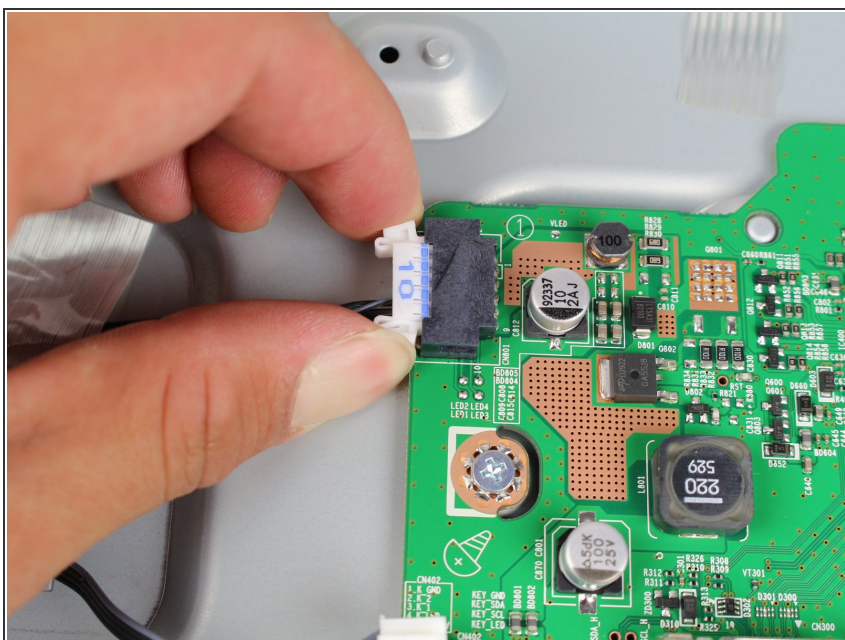


## Step 3 — Motherboard



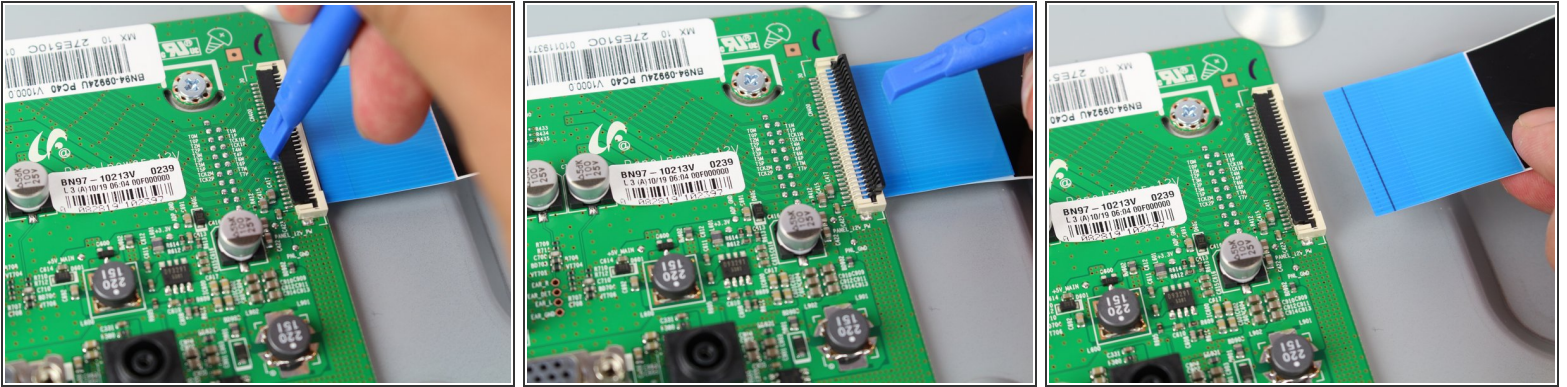
- Remove the navigation button connector by pulling while holding down its thumb tab.

## Step 4



- Remove the screen connector by gripping its sides and gently pulling while wiggling back and forth.

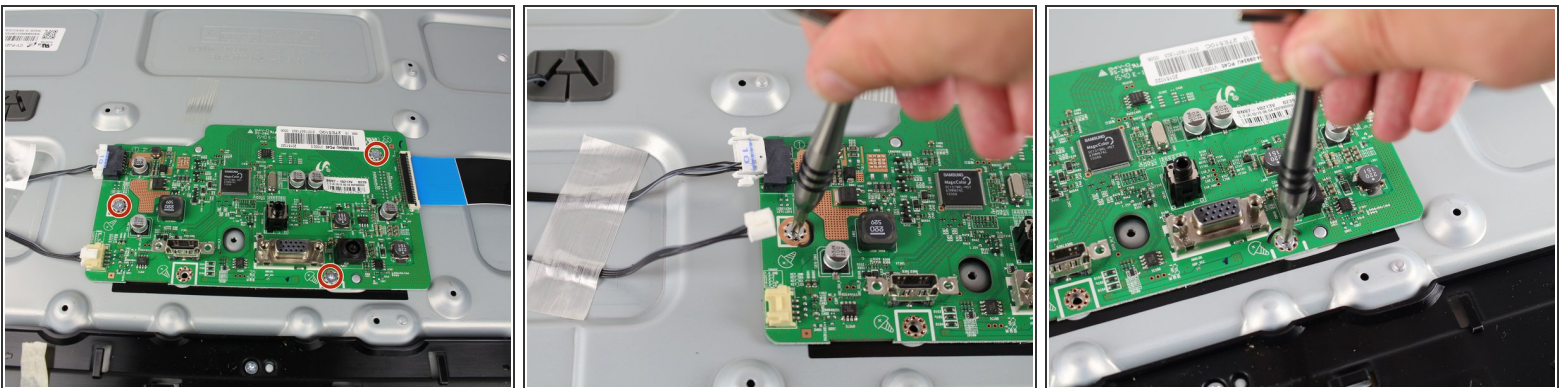
## Step 5



- For the ribbon cable, Lift the tab from the side facing the inside of the mother board with your fingernail or a spudger.
- Remove the cable by pulling while lifting slightly.

⚠ If the cable does not come out easily, than the secure tab may not be fully opened.

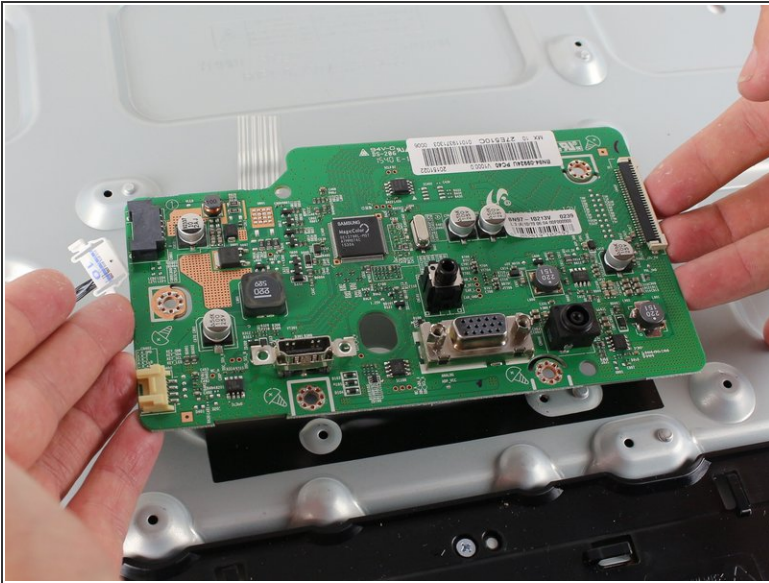
## Step 6



- Remove each of the 5mm length screws attaching the motherboard to the body of the monitor using a #1 Phillips head screwdriver.

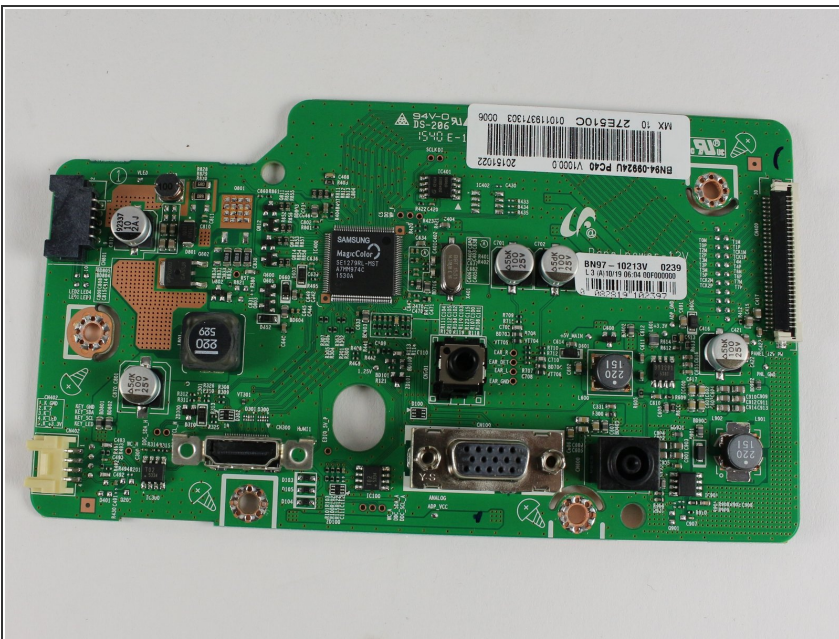


## Step 7



- Using both hands, lift the board off of the monitor body by the motherboards base.

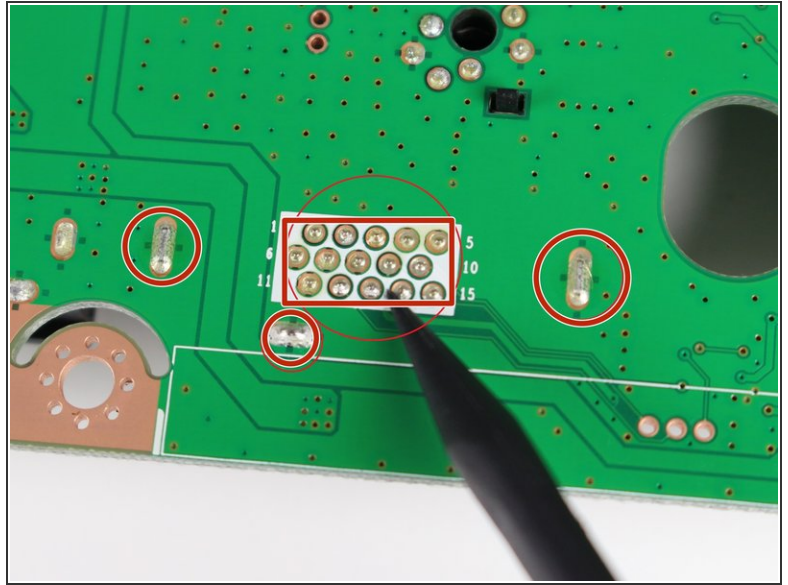
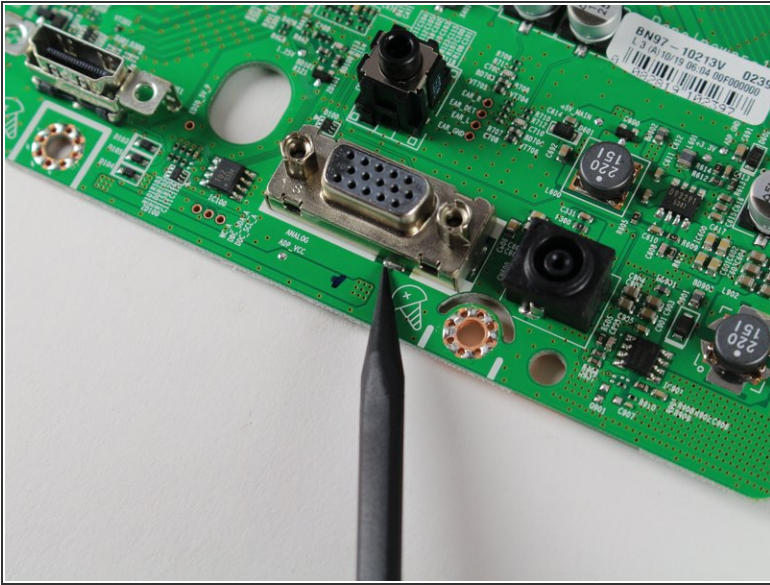
## Step 8 — VGA Port



- Gently place the motherboard on a static free surface.

⚠ It is imperative that this is done on a static free surface, as any discharge of static electricity can 'fry' your motherboard and render it useless.

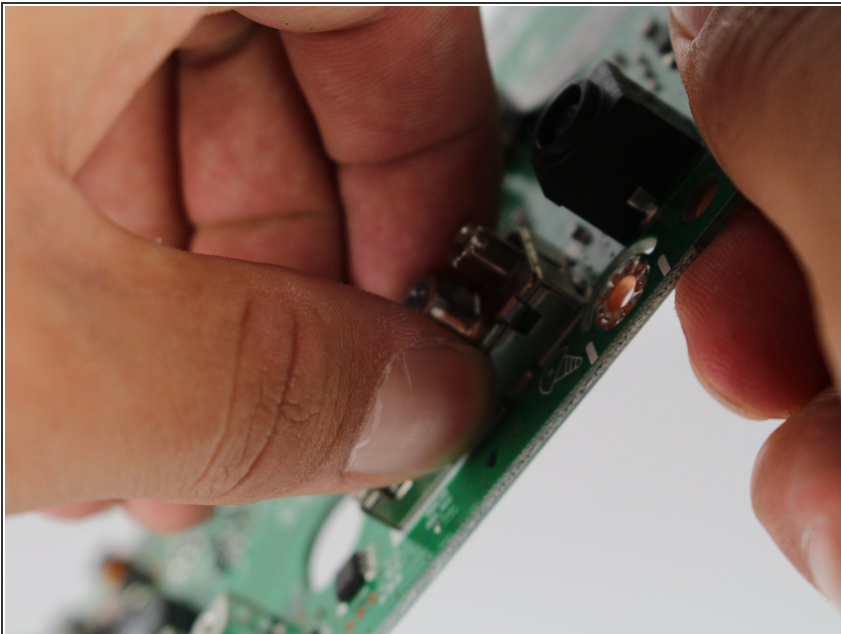
## Step 9



- [Desolder](#) the four regions in the area indicated on the back side of the motherboard using a soldering iron and some desoldering wick.

**i** The VGA Port should fall off the board if all of the solder is removed.

## Step 10



- If the VGA Port does not fall off the board, try tugging on it with your hand.

**!** The VGA Port may be too hot to touch right after desoldering.

**!** Excessive tugging could damage the motherboard.

To reassemble your device, follow these instructions in reverse order.