



Samsung 500C ChromeBook Wireless Card Replacement

A guide to replace the wireless card of the device.

Written By: Garrett Kissinger





TOOLS:

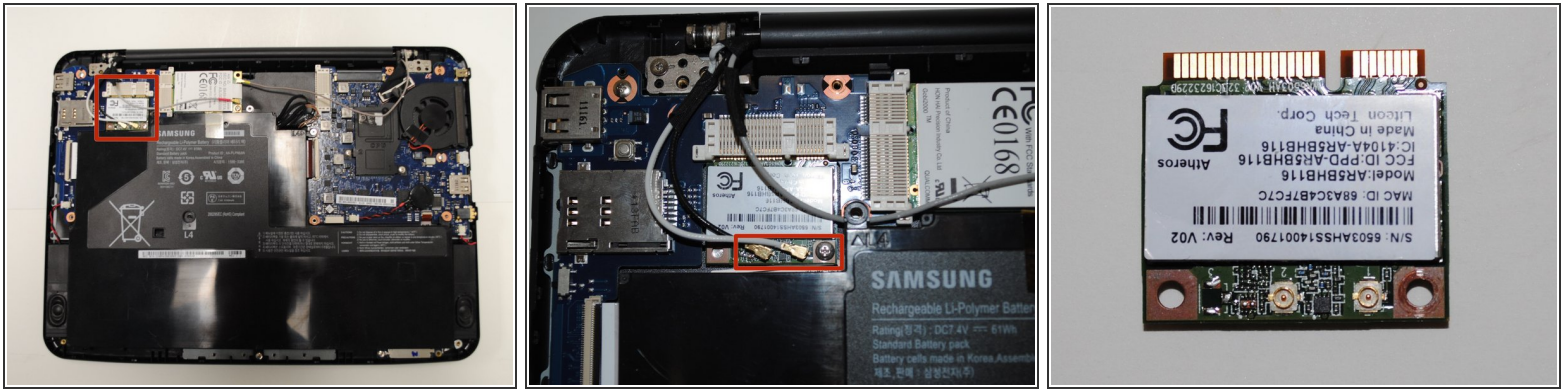
- [Phillips #0 Screwdriver](#) (1)
 - [Spudger](#) (1)
-

Step 1 — Wireless Card



- Remove the back panel of the device by taking out the seven screws on the back panel of the device.
- Four of the screws are under the rubber feet so they will need to be removed. To remove the feet, pry them off with the spudger.

Step 2



- Locate the wireless card. It is shown highlighted in picture one.
- Detach the black and white cords connected to the wireless card and unscrew the screw holding in the card. They are shown highlighted in picture two.
- Pull the card out of its slot and insert the new card. Reattach the wires and reassemble the device. Note: the white wire connects to the terminal closer to the screw and the black to the other terminal.

To reassemble your device, follow these instructions in reverse order.