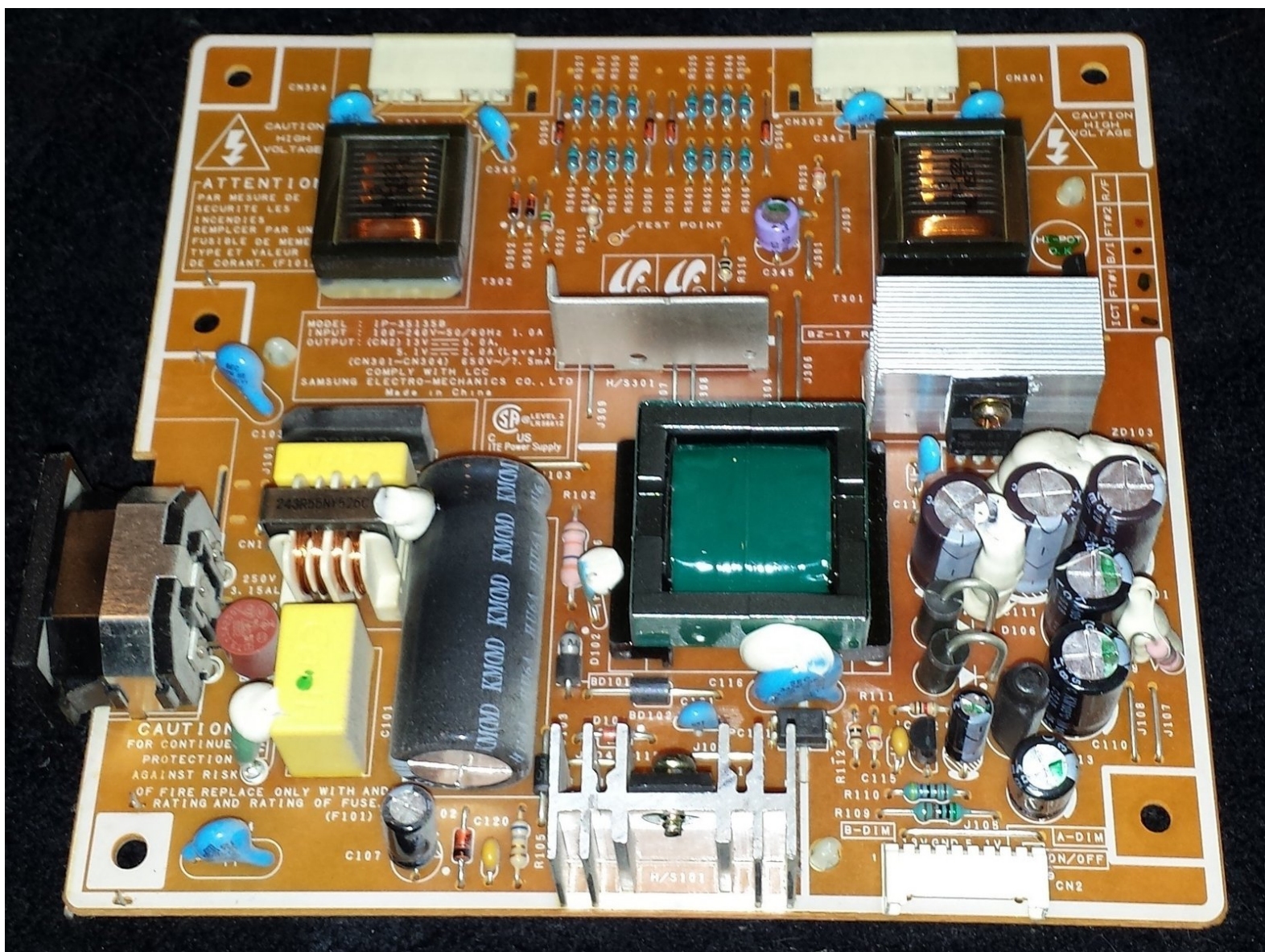




# Samsung 930 LCD Monitor Power Board Replacement

This guide details the replacement of a power board.

Written By: Brad



---

# INTRODUCTION

By: Nathan Zimmerer, Peter Rubis, Paul Biggins, and Brad Funsten.

This guide could be used to replace the blown capacitors on this board. It is suggested that a whole new replacement board

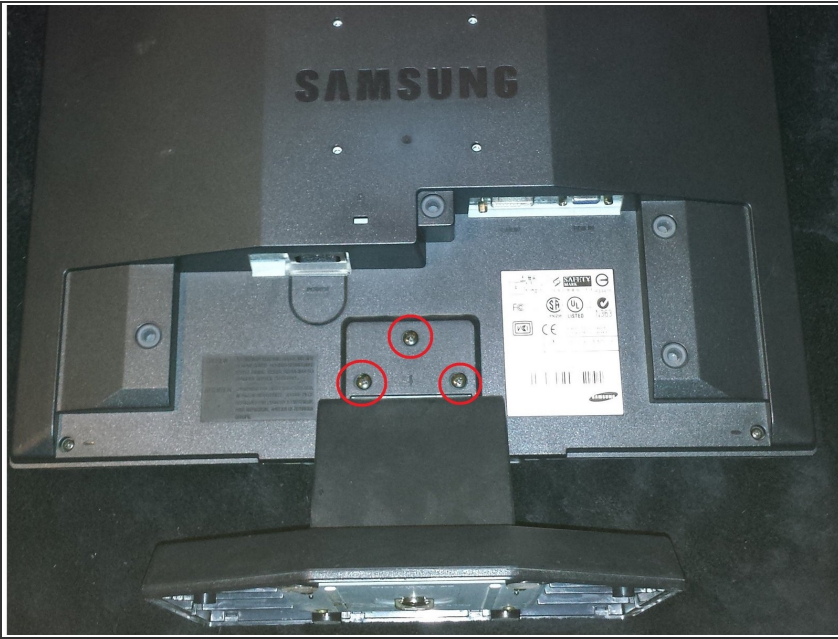


## TOOLS:

- [Pro Tech Toolkit](#) (1)

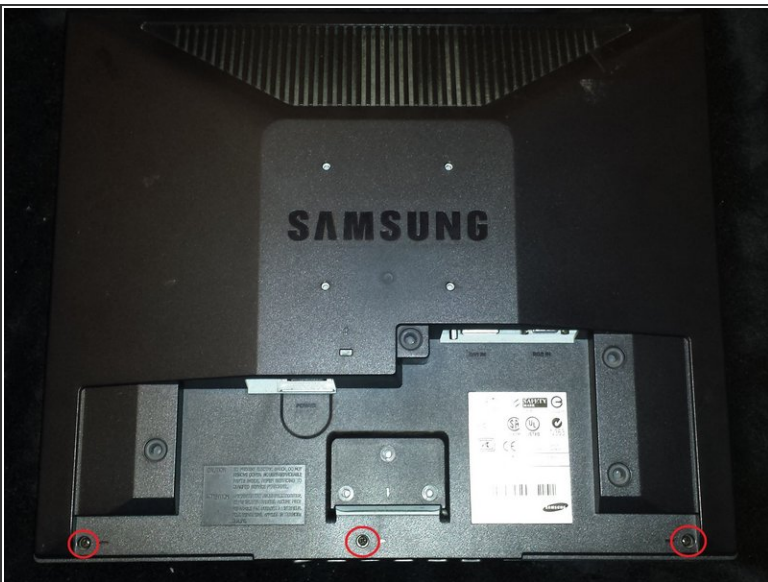


## Step 1 — Power Board



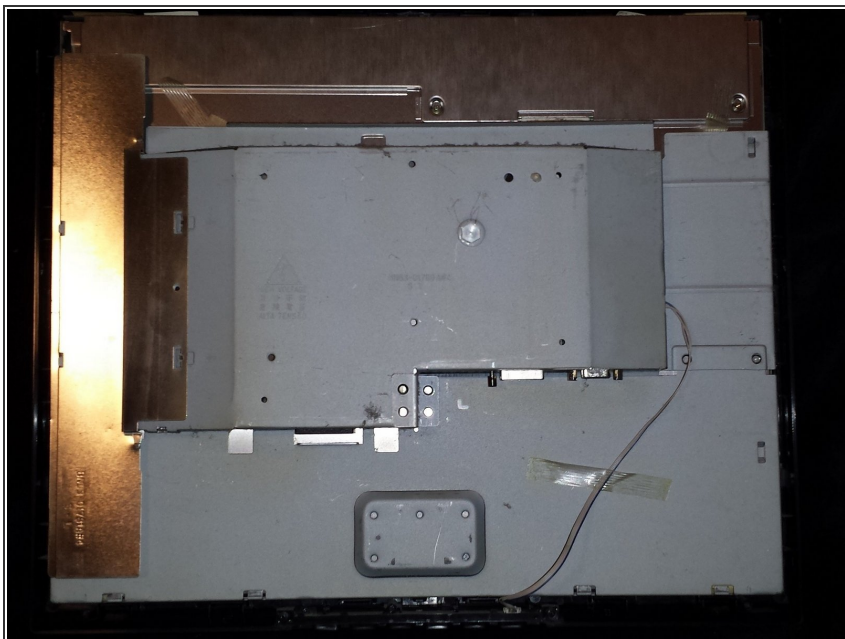
- You will need a phillips screwdriver and a replacement power board which can be ordered online 1. First, place the monitor face down, then remove the plastic covering if it's on. Once this is done remove the three screws shown below. Once these screws are removed, the stand is able to be removed.

## Step 2



- 2. Now remove the three screws shown below.

## Step 3



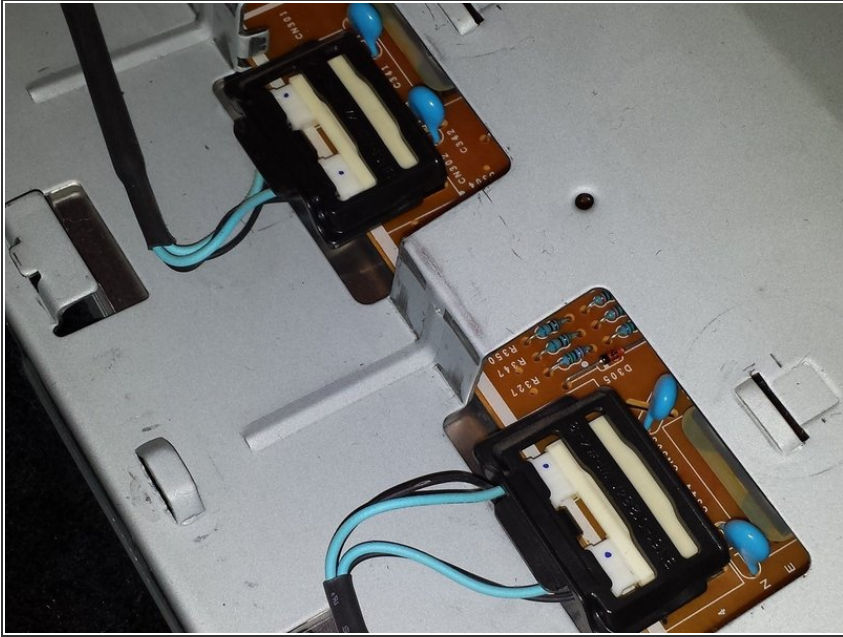
- 3. Now the plastic casing is able to be removed. Carefully pull apart the two pieces to reveal the metal casing as shown below. There are a few connectors you'll have to remove before revealing the power board.

## Step 4



- 4. Carefully remove the metal clips shown below.

## Step 5



- 5. Once this is removed you'll need to remove the black plastic connector holders. Then remove the four connectors, I suggest you mark these to make sure they are connected back into the same location when reassembling because the monitor was known to work this way.

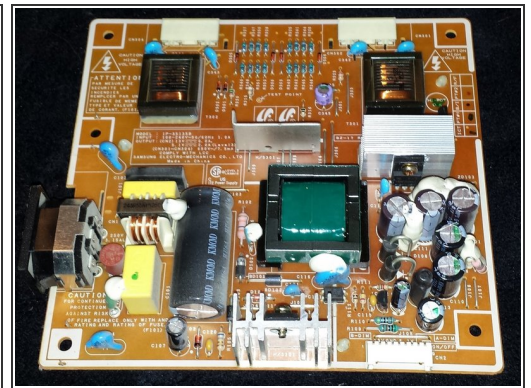
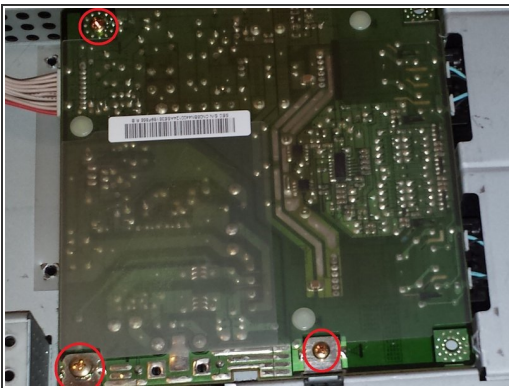


## Step 6



- 6. Remove the LCD display connector as show. You'll need to squeeze the two sides on this connector with your index finger and thumb in order to unlock it.

## Step 7



**⚠ Caution:** The circuit board contains many capacitors that could cause serious injury. Use a [capacitor discharge probe](#) to safely rid the capacitors of dangerous charges.

- ① Wearing electrically insulated gloves and rubber soled shoes while working with and near the capacitors ensures greater safety and protection against electric shock. See iFixit's [Project Safety](#) page for additional safety information.

- 7. Now the metal casing that is holding the power board can be detached from the LCD screen. You'll need to remove the final three screws in order to replace the power board. You'll be able to follow this walkthrough in reverse in order to reassemble the monitor.

To reassemble your device, follow these instructions in reverse order.