

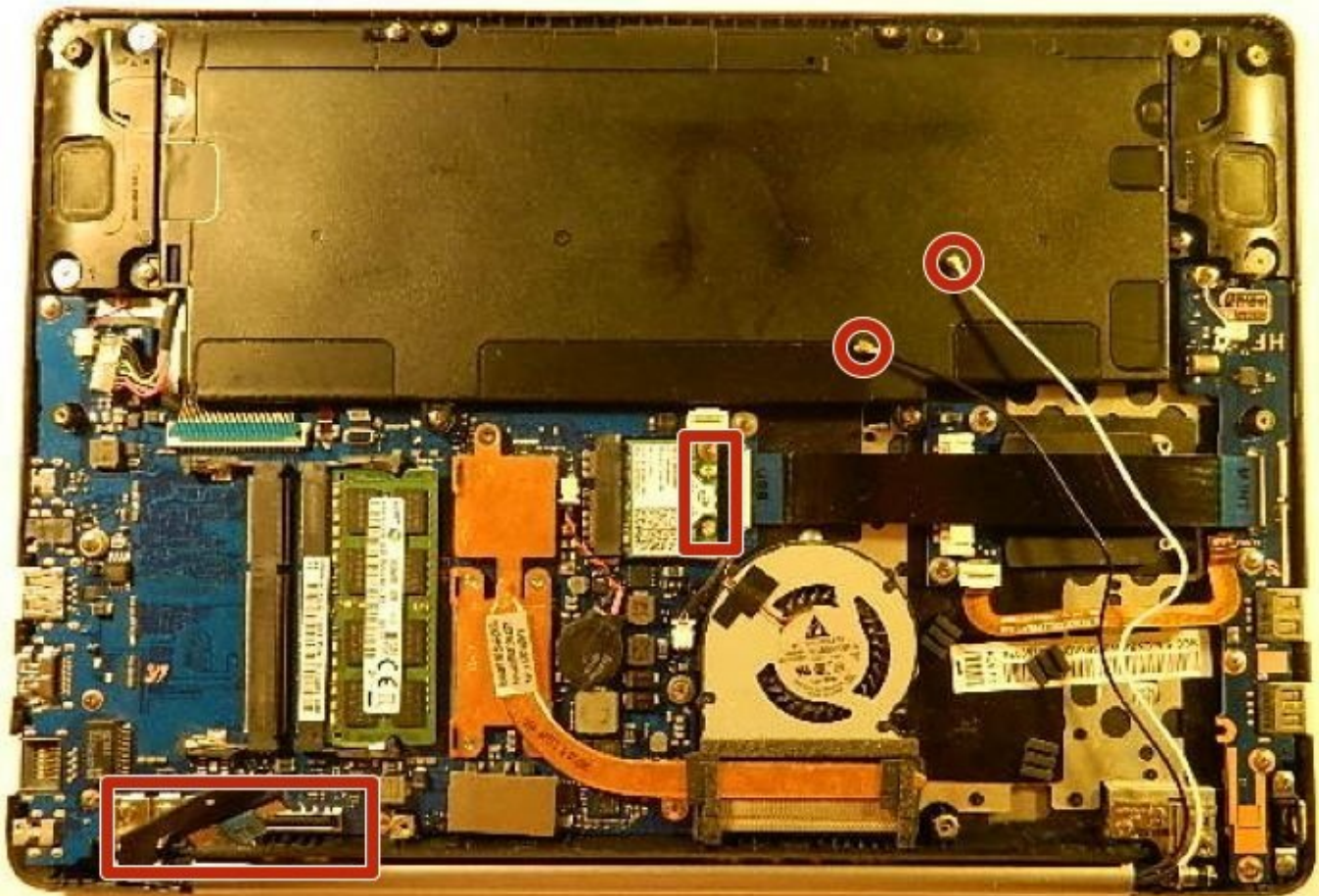


Samsung ATIV Book 7 NP740U3E-K01UB

Touch-Screen Replacement

In this guide you will learn how to replace the Touch-Screen used by the Samsung ATIV Book 7 NP740U3E-K01UB.

Written By: Liam



INTRODUCTION

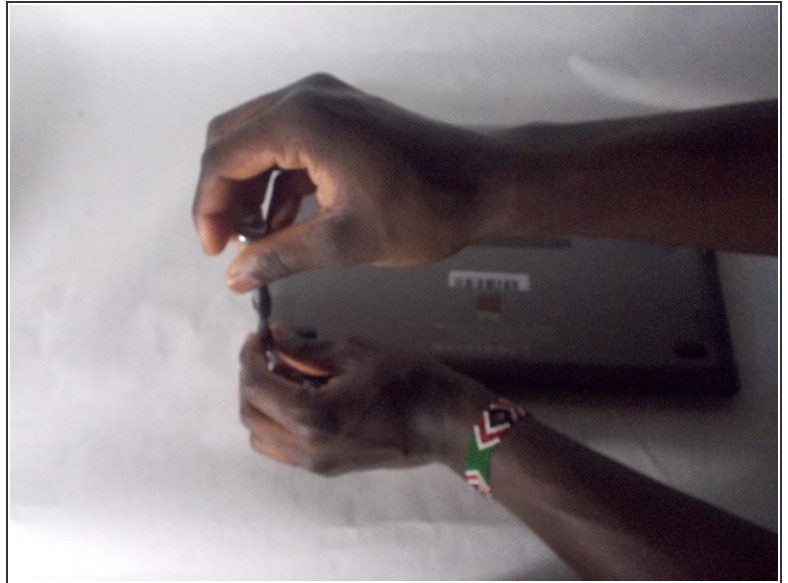
This guide will allow the user to remove and replace the touchscreen device used by the Samsung ATIV Book 7 NP740U3E-K01UB. By working through this guide, the user will develop an understanding of the composition of the screen assembly and learn how the components can be removed and replaced.



TOOLS:

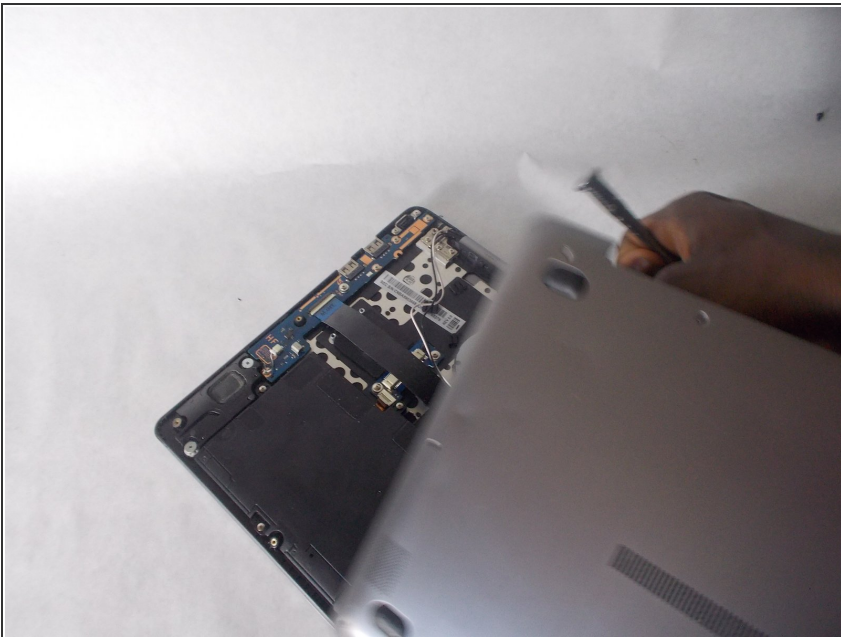
- [Phillips #000 Screwdriver](#) (1)
 - [Phillips #0 Screwdriver](#) (1)
-

Step 1 — Backplate



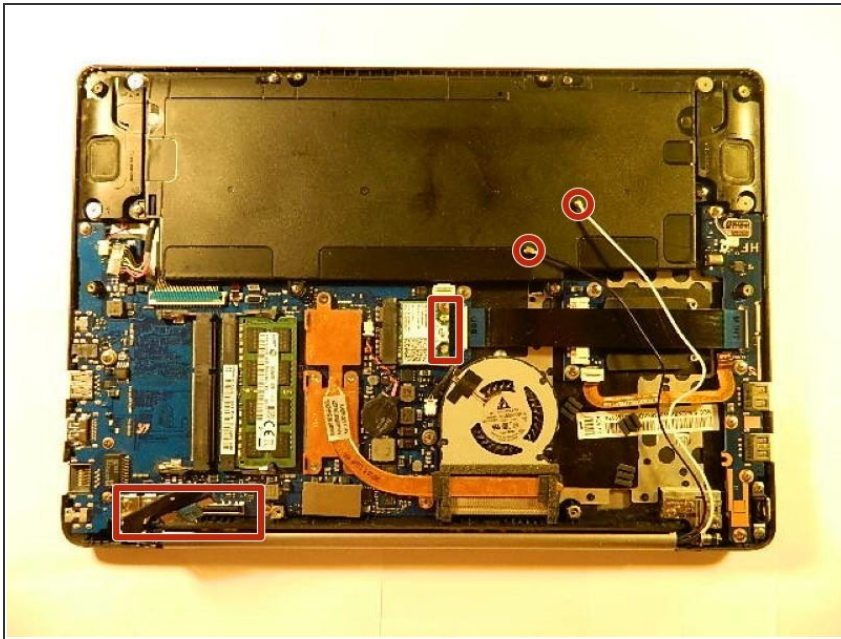
- Remove the ten 5 mm screws that hold the backplate using the Phillips #000 screwdriver.

Step 2



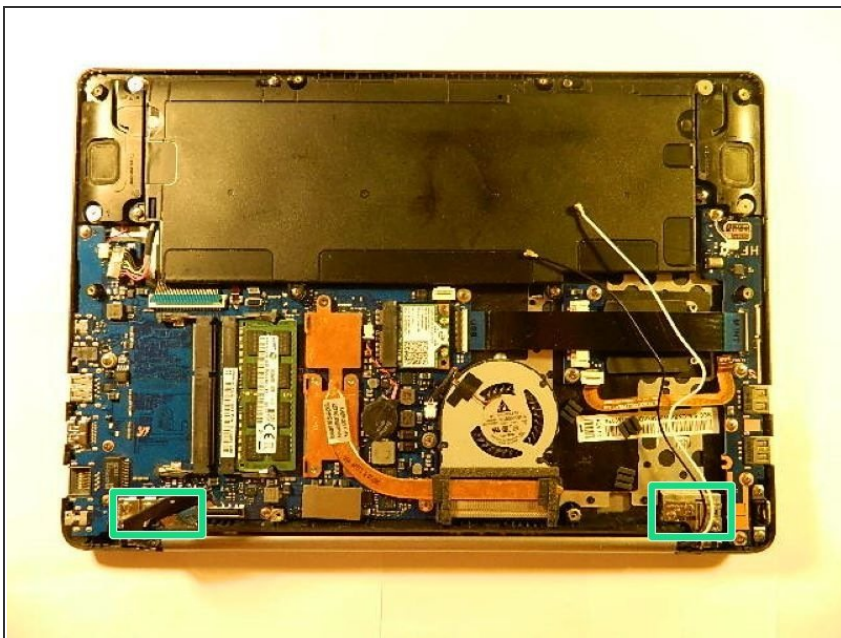
- Remove the backplate.

Step 3 — Touch-Screen



- Disconnect the databus from the motherboard as seen in the lower left of the picture
- Disconnect the white and black wire from the graphics card as seen in the middle of the photo. (Note: These two wires are connected to the motherboard by means of snap-in male-female copper connectors, meaning they can be disconnected by un-snapping the connectors.)

Step 4



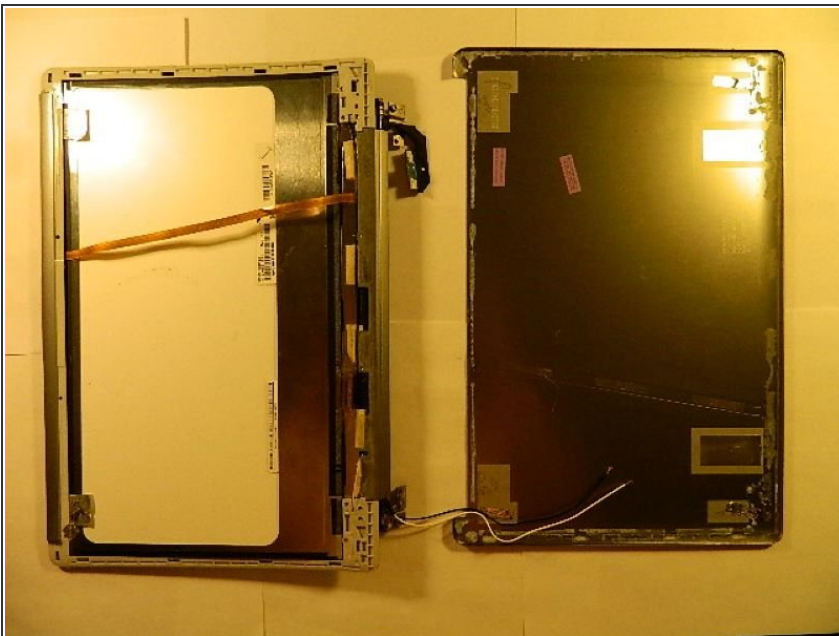
- Using the Phillips #000 screwdriver, remove six 5mm screws.
- ⓘ These screws hold the screen assembly into place with the motherboard / electronics assembly.

Step 5



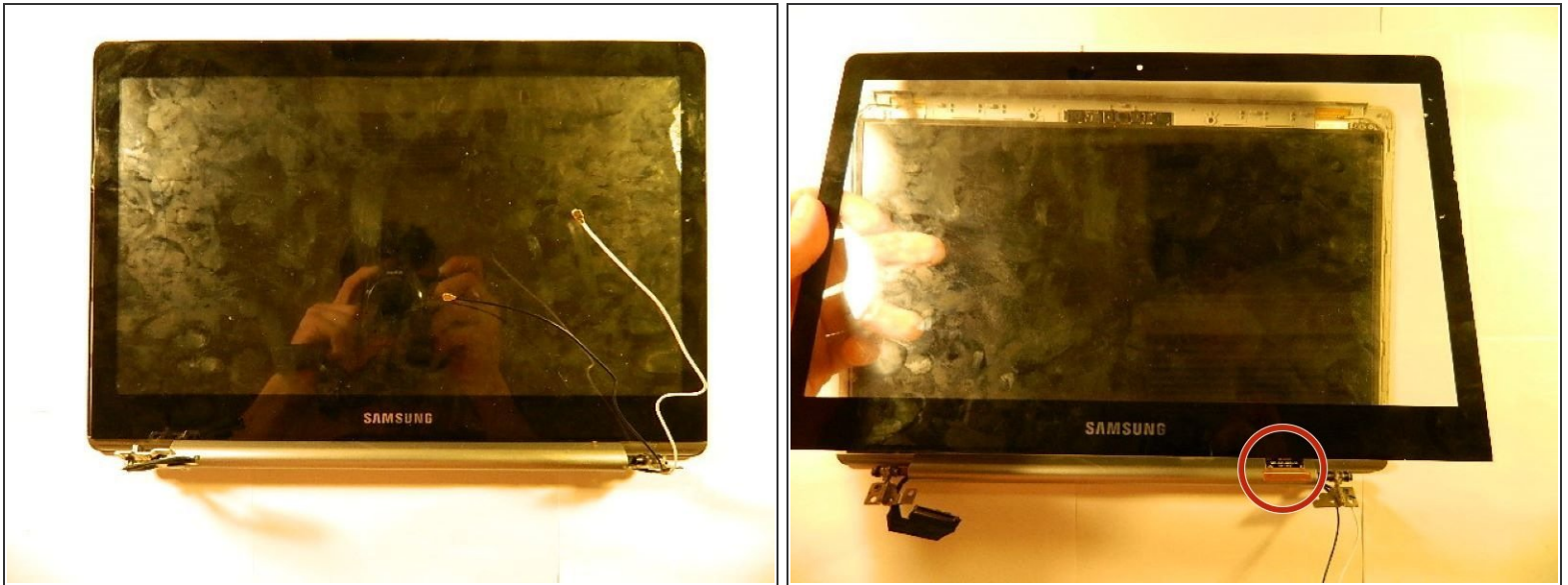
- Now that the six 5mm screws were removed, remove and separate the screen assembly as seen in the image.
- ⓘ As seen in the next step, the backplate of the screen assembly will be removed. There is no hardware keeping this in place except for adhesive glue. Therefore the screen assembly backplate will be gently pried free.

Step 6



- The screen assembly backplate is to be removed
- ⓘ The backplate is adhered around the edges. Using a flat-wedged tool, gently pry the backplate free from the assembly.

Step 7



- Now that backplate has been removed, flip the laptop over on the front. Remove the capacitive touch screen.
- ⓘ Similarly to how the backplate was adhered with glue, this touch screen is adhered to the graphics screen of this device. As seen in the second photo, the touch screen should be gently separated from the graphics screen. Make sure to disconnect the ribbon as circle in the photo.

To reassemble your device, follow these instructions in reverse order.

Important Note: When re-assembling the screen assembly, additional adhesive glue may be needed to adhere the capacitive touch-screen and screen cover back onto the original assembly.