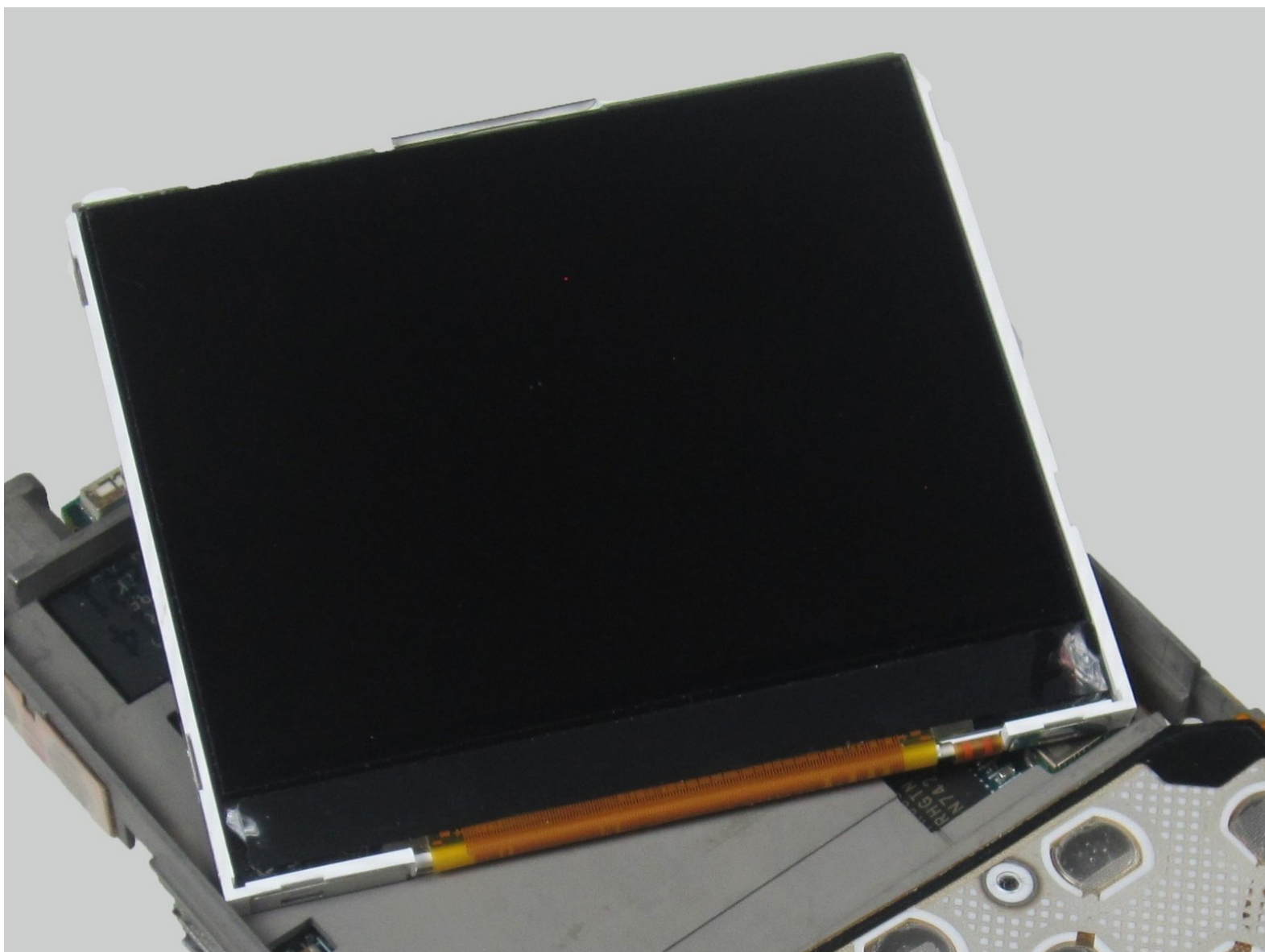




# Samsung Ace Display Screen Replacement

Installing a new LCD Screen.

Written By: Breanne



---

## INTRODUCTION

If the main display on your phone is cracked, depicting a frozen image, or not displaying an image at all, then installing a new display may fix these problems.

---



### TOOLS:

- [Phillips #00 Screwdriver](#) (1)
  - [Spudger](#) (1)
-

## Step 1 — Battery



- To remove the back casing, firmly press down and push towards the bottom of the phone.

## Step 2



- With the casing removed, lift the battery from the indicated indentation.

### Step 3



- From here, you can now access the SIM card and model/serial numbers.

### Step 4 — Casing



- Using the Phillips #00 screwdriver, remove the four indicated screws (4.5 mm).



## Step 5



- Press the pointed edge of the spudger into the side of the two rubber plugs in order to lift and remove them from the top of the phone.
- Then, using the Phillips #00 screwdriver, remove the two indicated Phillip screws (6.5 mm).

## Step 6



- To remove the SIM card, start by pressing the top of the card and push down and away towards the bottom of the phone. Then, as indicated, pull the SIM card out.

## Step 7



- Begin to slowly lift the back casing of the phone. You should hear a snap when the casing is released.
- ⓘ The power, volume, and camera buttons may fall out when separating the front and back casing.

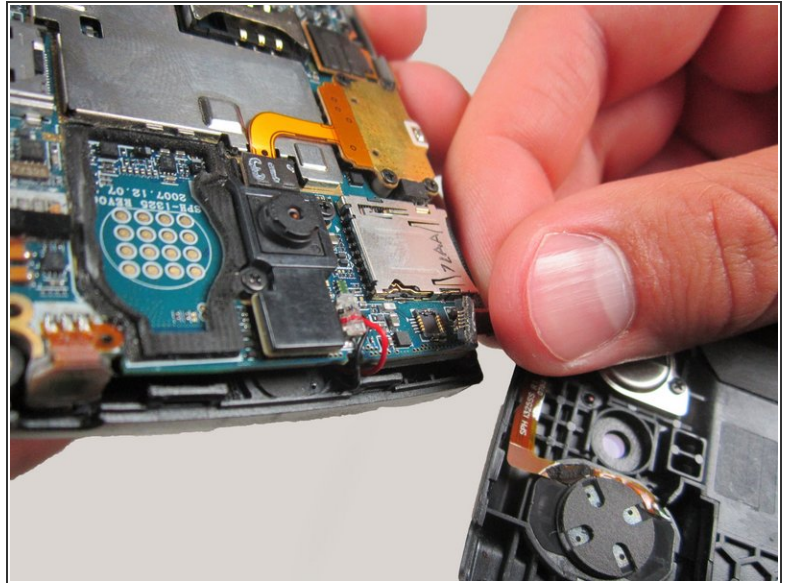
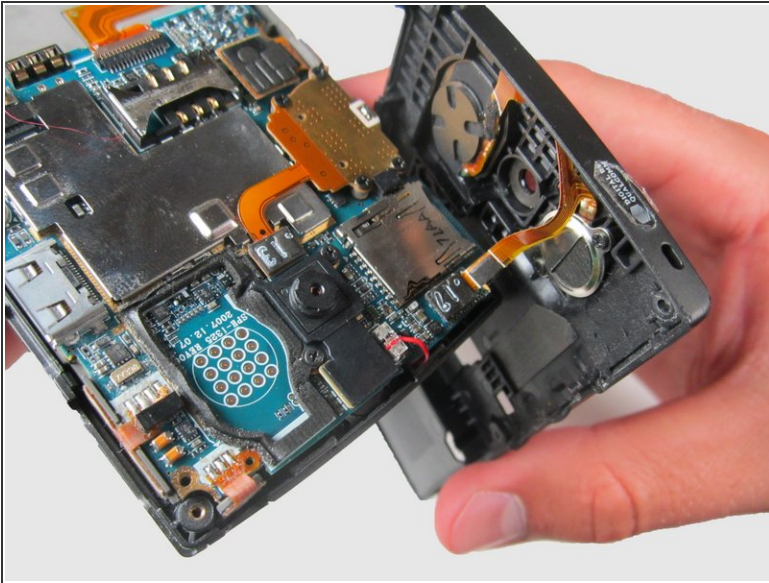
## Step 8



- Your casing should be separated and the three loose buttons put to the side.
- ⚠ Be aware of the wiring on the top of the phone. Make sure not to pull it apart when separating the case.

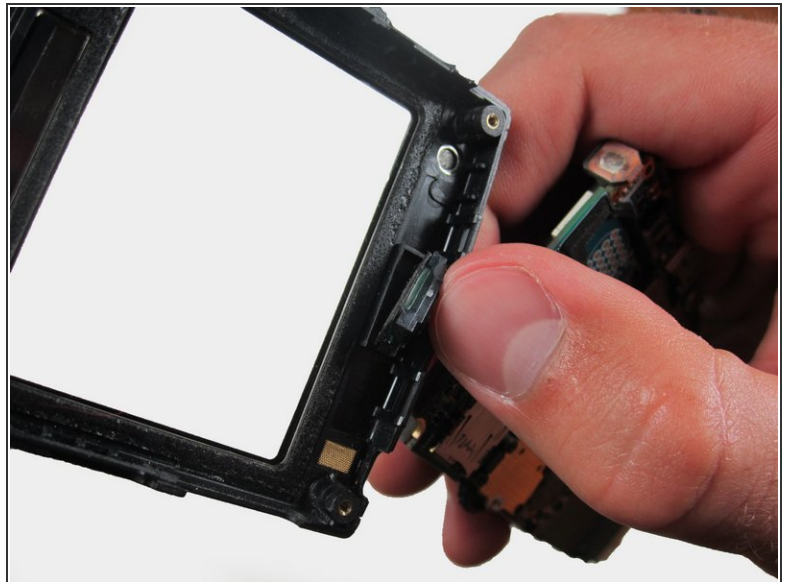
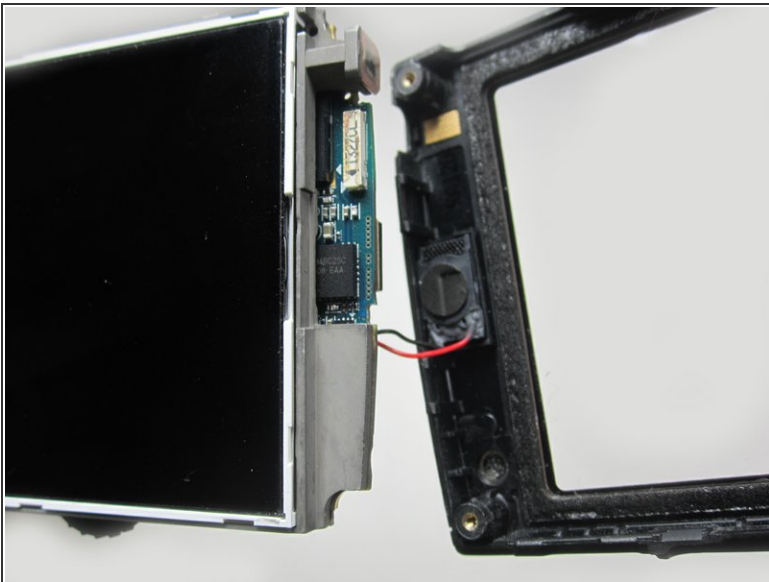


## Step 9



- Slowly remove the back casing by gently pulling the ribbon connection.

## Step 10



- Gently pull on the wires to remove the front casing.

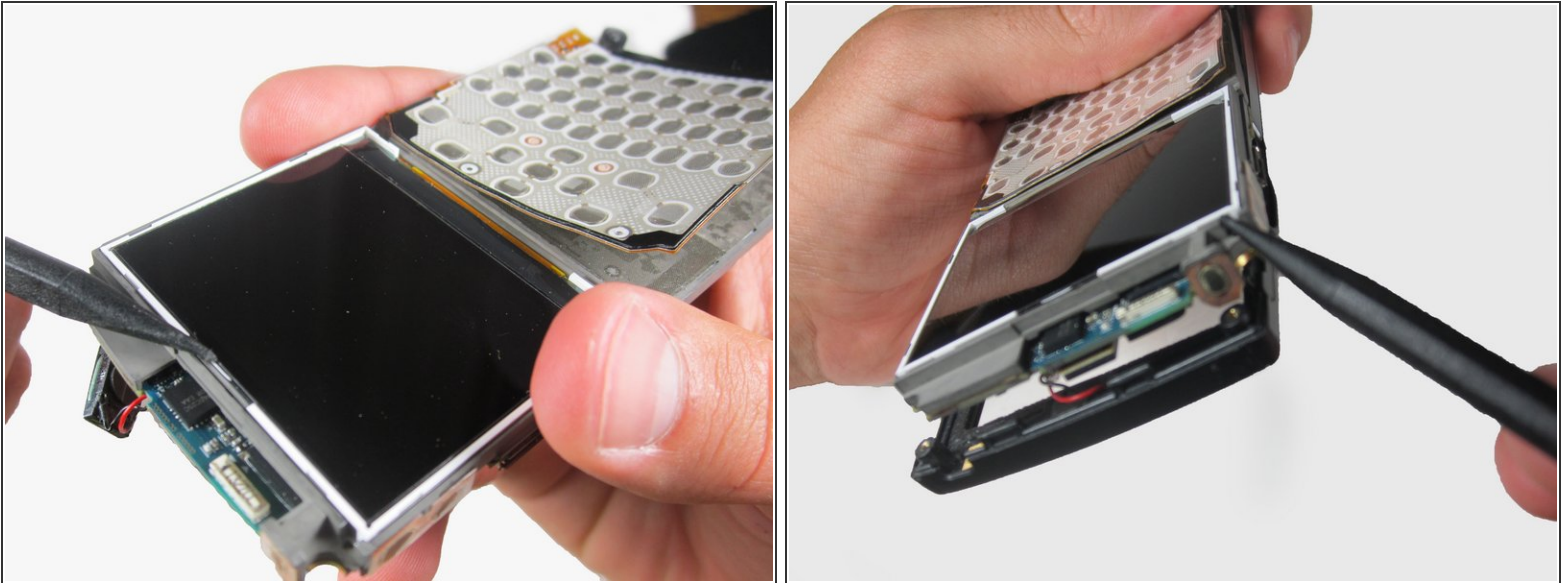
## Step 11



- Your front casing and front speaker are now released.

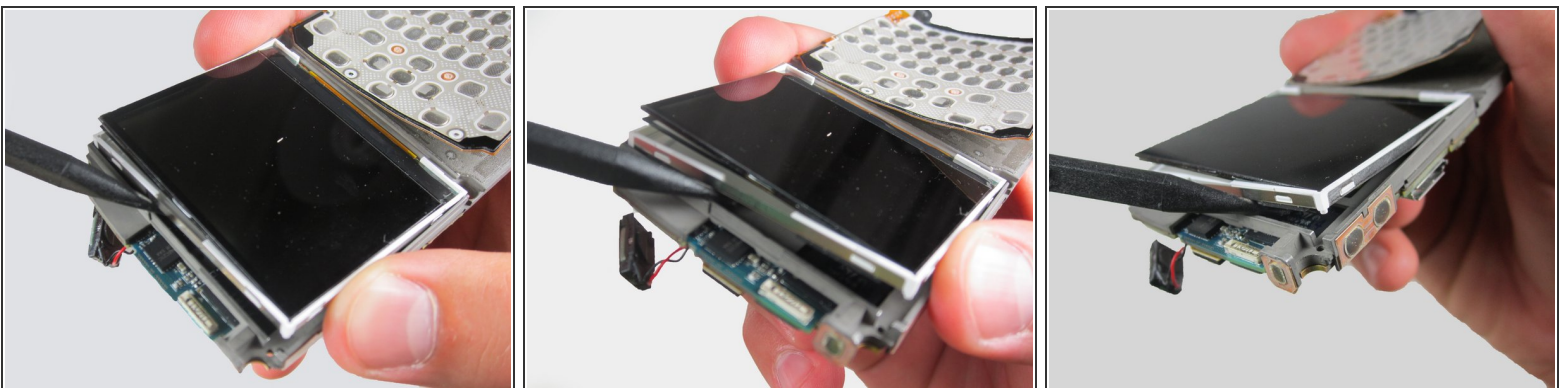


## Step 12 — Display Screen



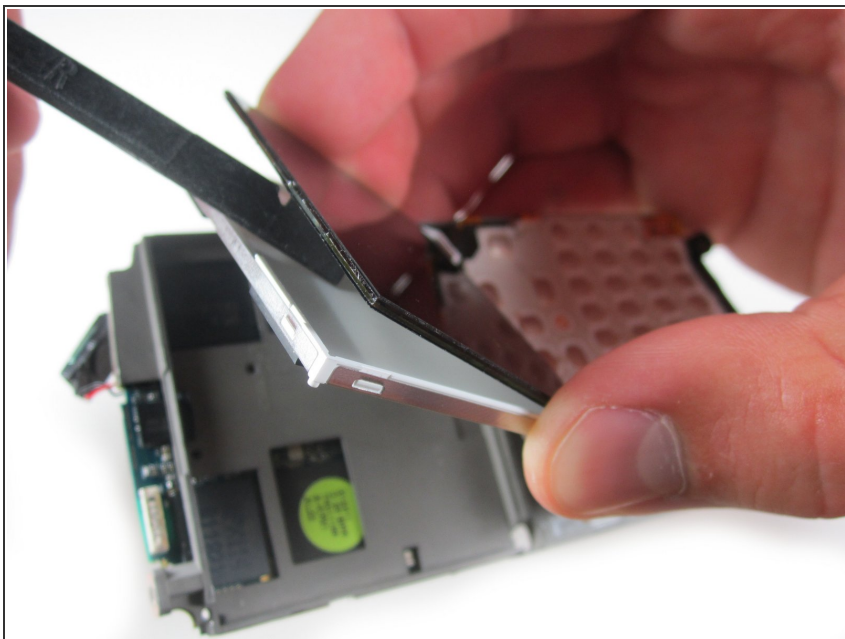
- Locate the display screen.
- Carefully squeeze part of the flat or pointed edge of the spudger into the spacing under the glass display to pry and lift the display up.
- It may help to insert the pointed edge of the spudger into the small indentation shown on the right in the second image.

## Step 13



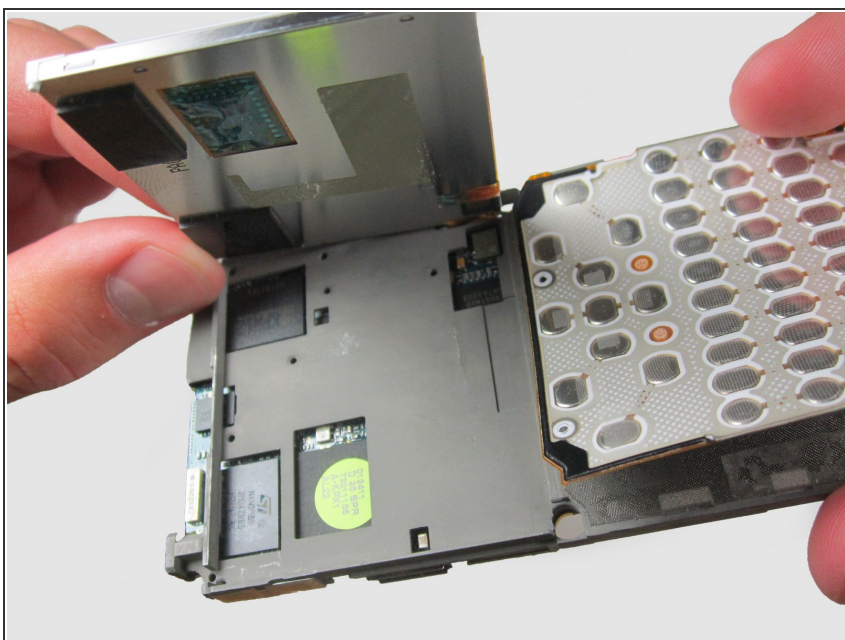
- Slide the spudger across the bottom of the display and slowly push up.

## Step 14



- Slowly pry the spudger up to remove the display.

## Step 15



- To remove the casing as a whole, slowly lift up and towards the right side of the phone.
- ⚠ Be aware of the wiring on the right side of the phone connecting the display.

To reassemble your device, follow these instructions in reverse order.