



# Samsung Ace Keyboard Replacement

This will show you how to access the keyboard component of the cell phone.

Written By: Garrett Germany



## INTRODUCTION

If your keypad is malfunctioning by either inputting the wrong characters when you type or not recognizing when you click any of the buttons, then installing a new keypad may help.

---

### TOOLS:

- [Phillips #00 Screwdriver](#) (1)
  - [Spudger](#) (1)
-

## Step 1 — Battery



- To remove the back casing, firmly press down and push towards the bottom of the phone.

## Step 2



- With the casing removed, lift the battery from the indicated indentation.



### Step 3



- From here, you can now access the SIM card and model/serial numbers.

### Step 4 — Casing



- Using the Phillips #00 screwdriver, remove the four indicated screws (4.5 mm).

## Step 5



- Press the pointed edge of the spudger into the side of the two rubber plugs in order to lift and remove them from the top of the phone.
- Then, using the Phillips #00 screwdriver, remove the two indicated Phillip screws (6.5 mm).

## Step 6



- To remove the SIM card, start by pressing the top of the card and push down and away towards the bottom of the phone. Then, as indicated, pull the SIM card out.

## Step 7



- Begin to slowly lift the back casing of the phone. You should hear a snap when the casing is released.
- ⓘ The power, volume, and camera buttons may fall out when separating the front and back casing.

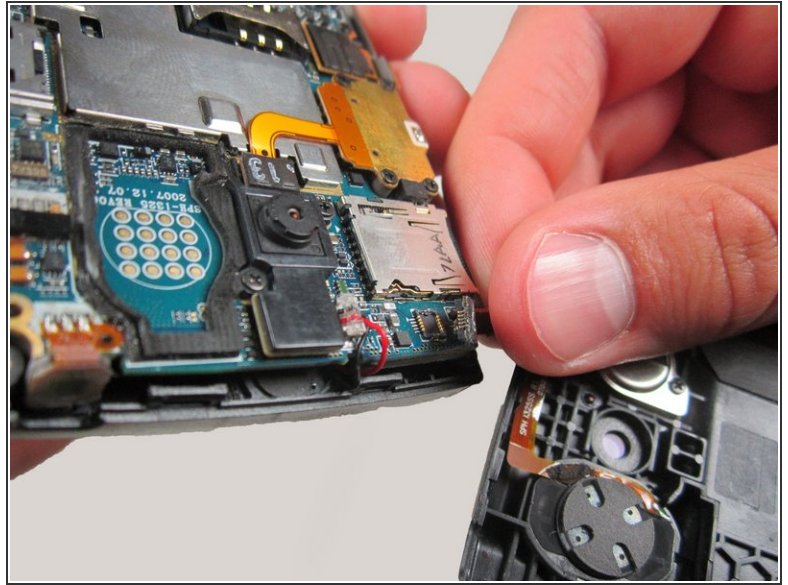
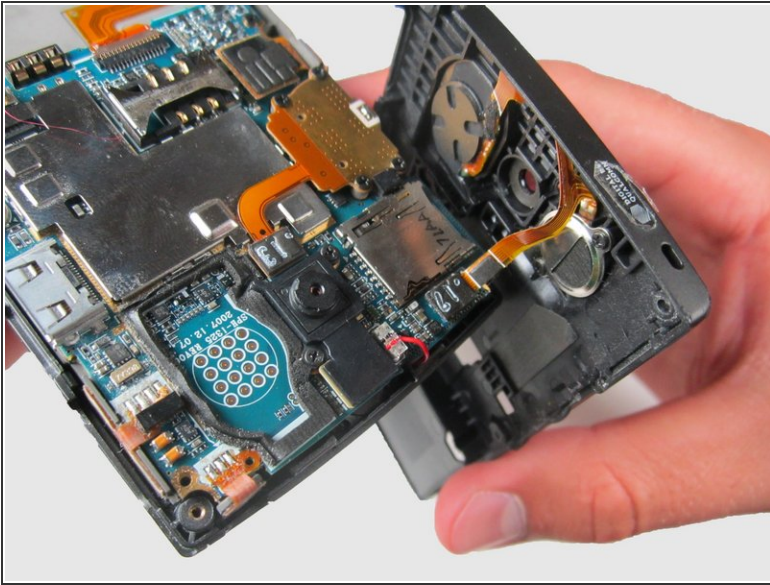
## Step 8



- Your casing should be separated and the three loose buttons put to the side.
- ⚠ Be aware of the wiring on the top of the phone. Make sure not to pull it apart when separating the case.

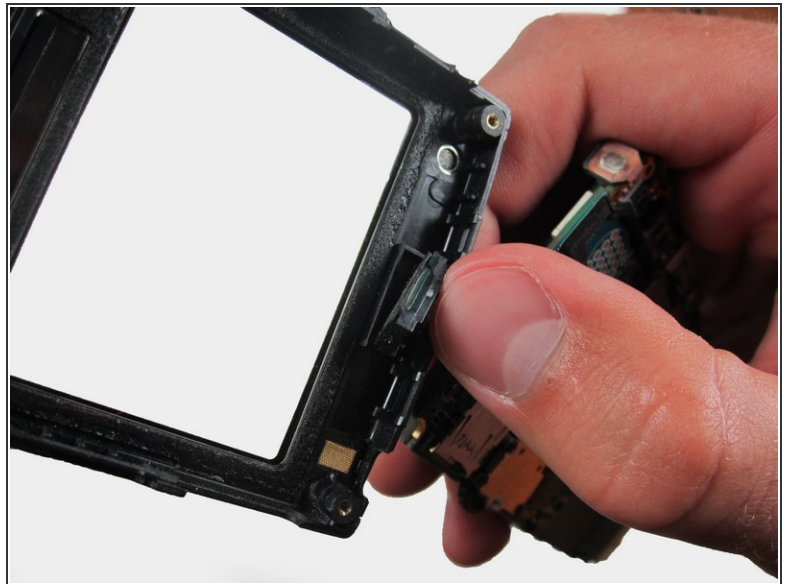
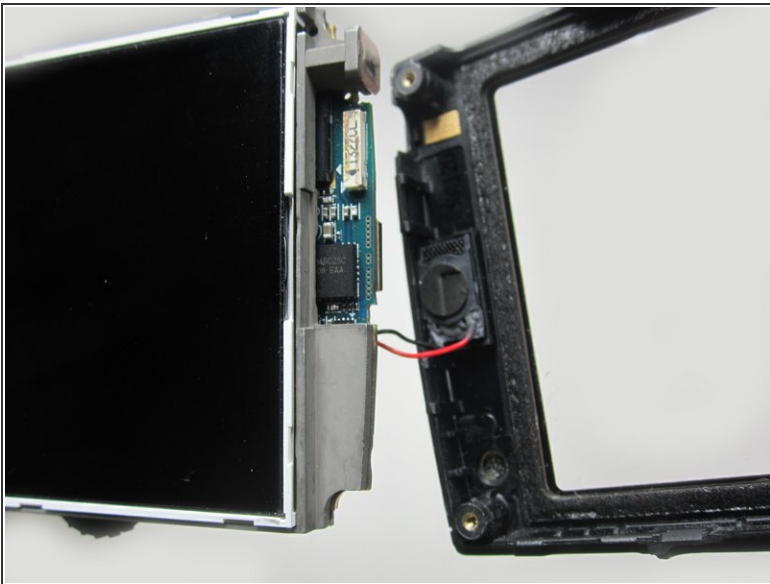


## Step 9



- Slowly remove the back casing by gently pulling the ribbon connection.

## Step 10



- Gently pull on the wires to remove the front casing.

## Step 11



- Your front casing and front speaker are now released.

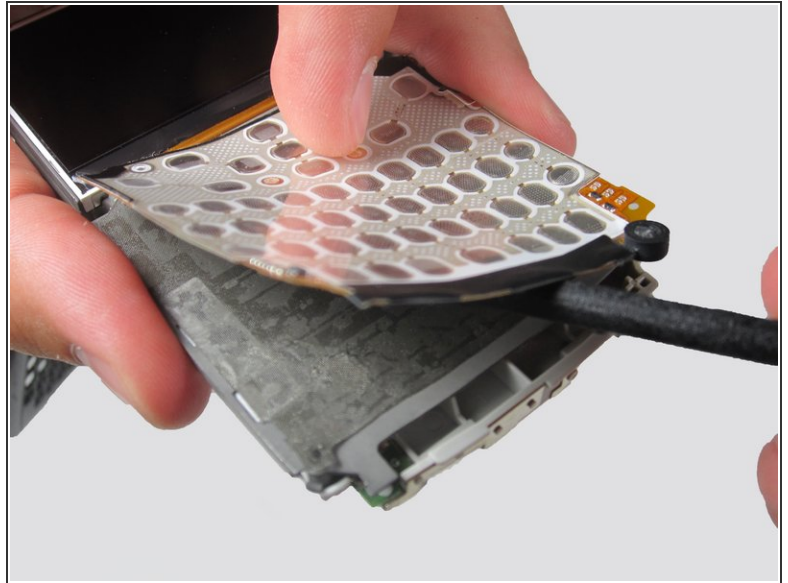
## Step 12 — Keyboard



- Remove the keypad and place it to the side.

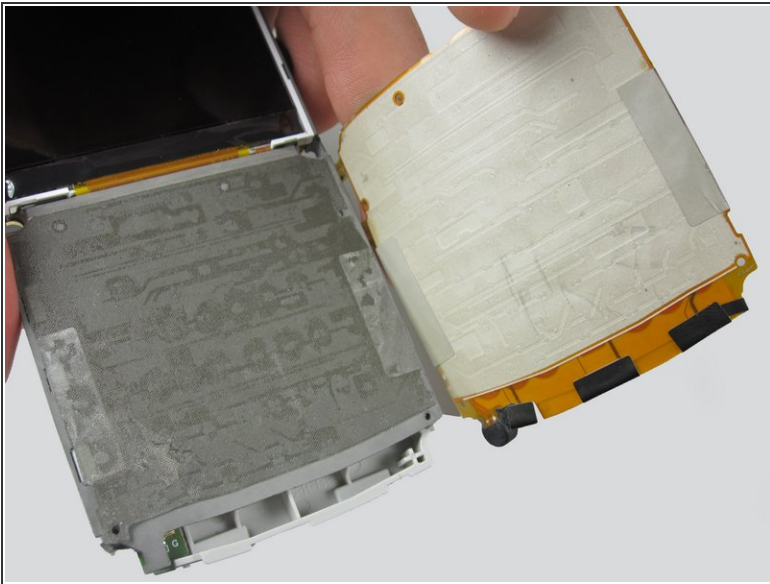


## Step 13



- Insert the flat edge of the spudger to the space under the keypad and slide it along the bottom to lift the keypad out of its place. The keypad should be stuck to the surface very tightly.

## Step 14



- The keypad will lift off the adhesive.
- ⚠ Be aware of the wires still connected on the right side of the phone.

To reassemble your device, follow these instructions in reverse order.