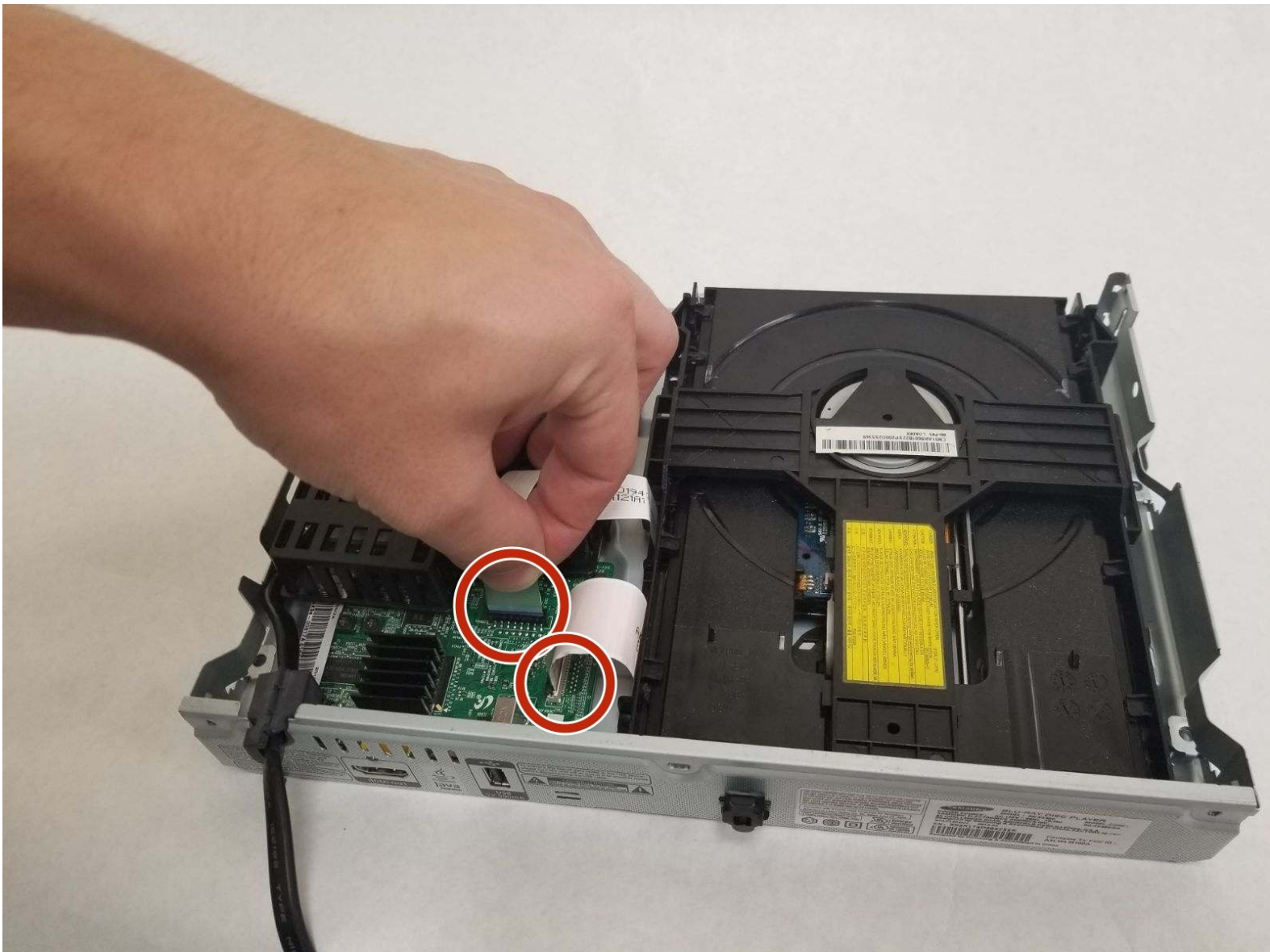




# Samsung BD-E5400 Disk Drive Replacement

How to replace a Samsung BD-E5400 disk drive.

Written By: Jeremy Estrella



## INTRODUCTION

Nothing is more frustrating than the useless whir of a disk drive that will not read your disk. In this guide, we will show you how to replace your disk drive!



### TOOLS:

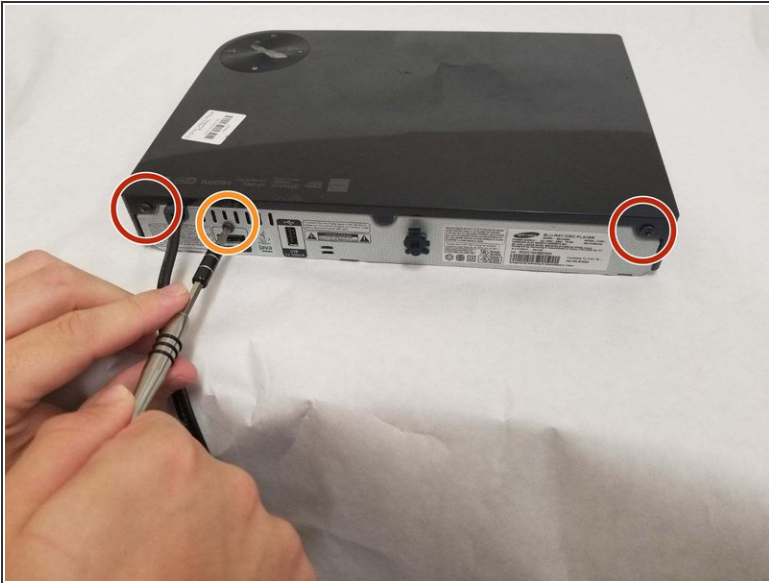
- [Phillips #1 Screwdriver](#) (1)



### PARTS:

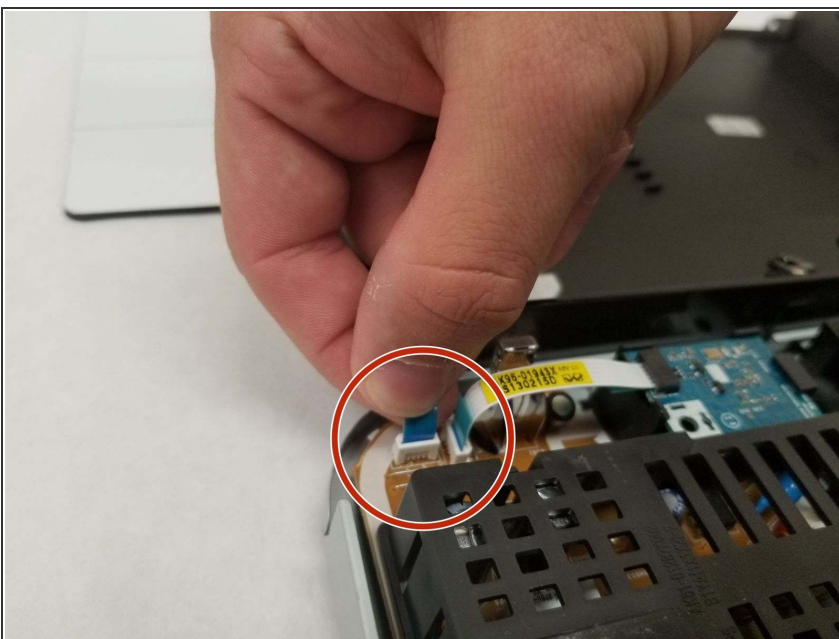
- [Optical Disk Drive](#) (1)

## Step 1 — Outer Cover



- Remove the two 10mm Phillips #1 screws.
- Remove the one 8 mm Phillips #1 screw.
- Carefully lift up the cover and lay back, to ensure that you do not damage the attached cable.

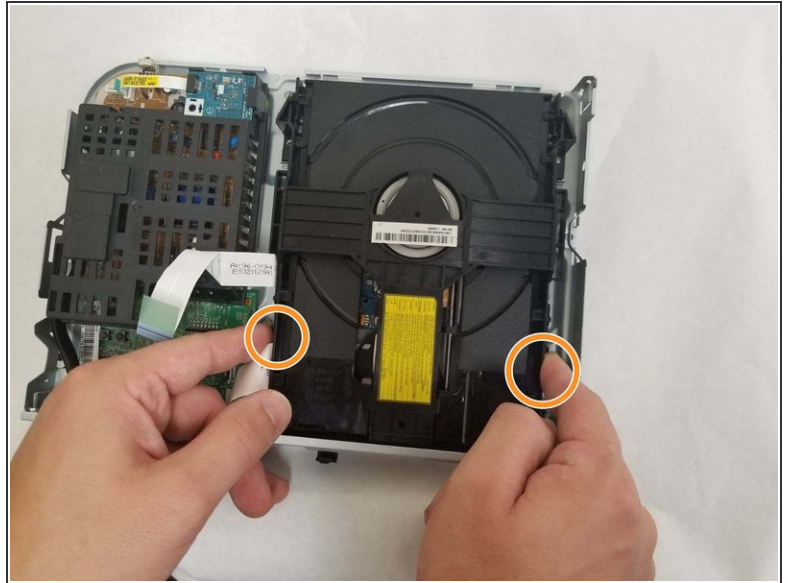
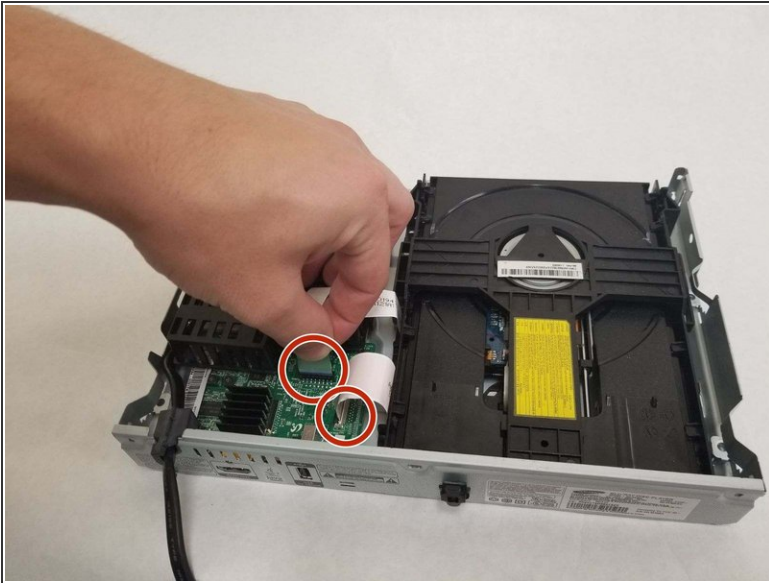
## Step 2



- Unplug the small wiring bundle attaching the body of the device to the cover.
- Lay the cover aside.

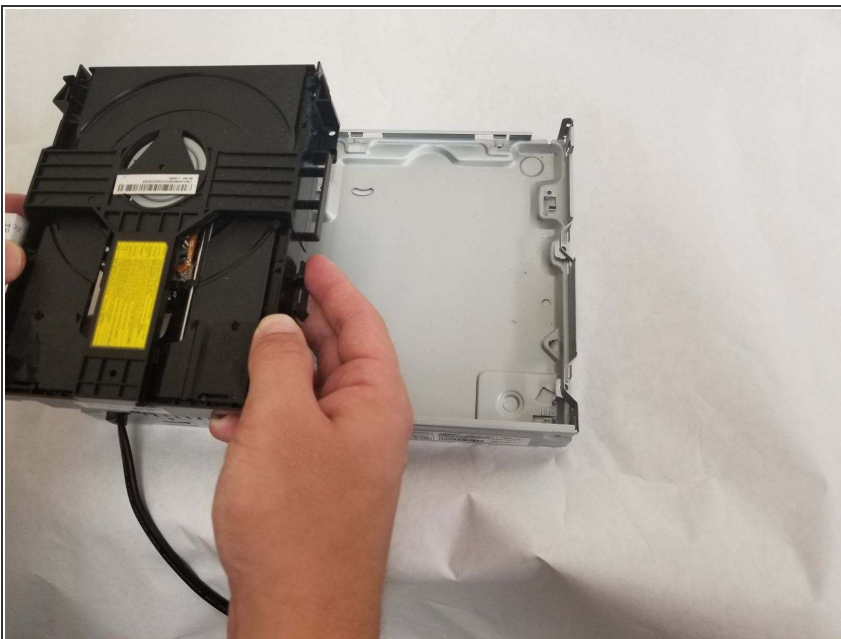


## Step 3 — Disk Drive



- Remove both wire bundles from motherboard.
- Depress tabs located on each side of disk drive as shown.

## Step 4



- Push entire disk drive forward.
- Remove disk drive and replace.

To reassemble your device, follow these instructions in reverse order.