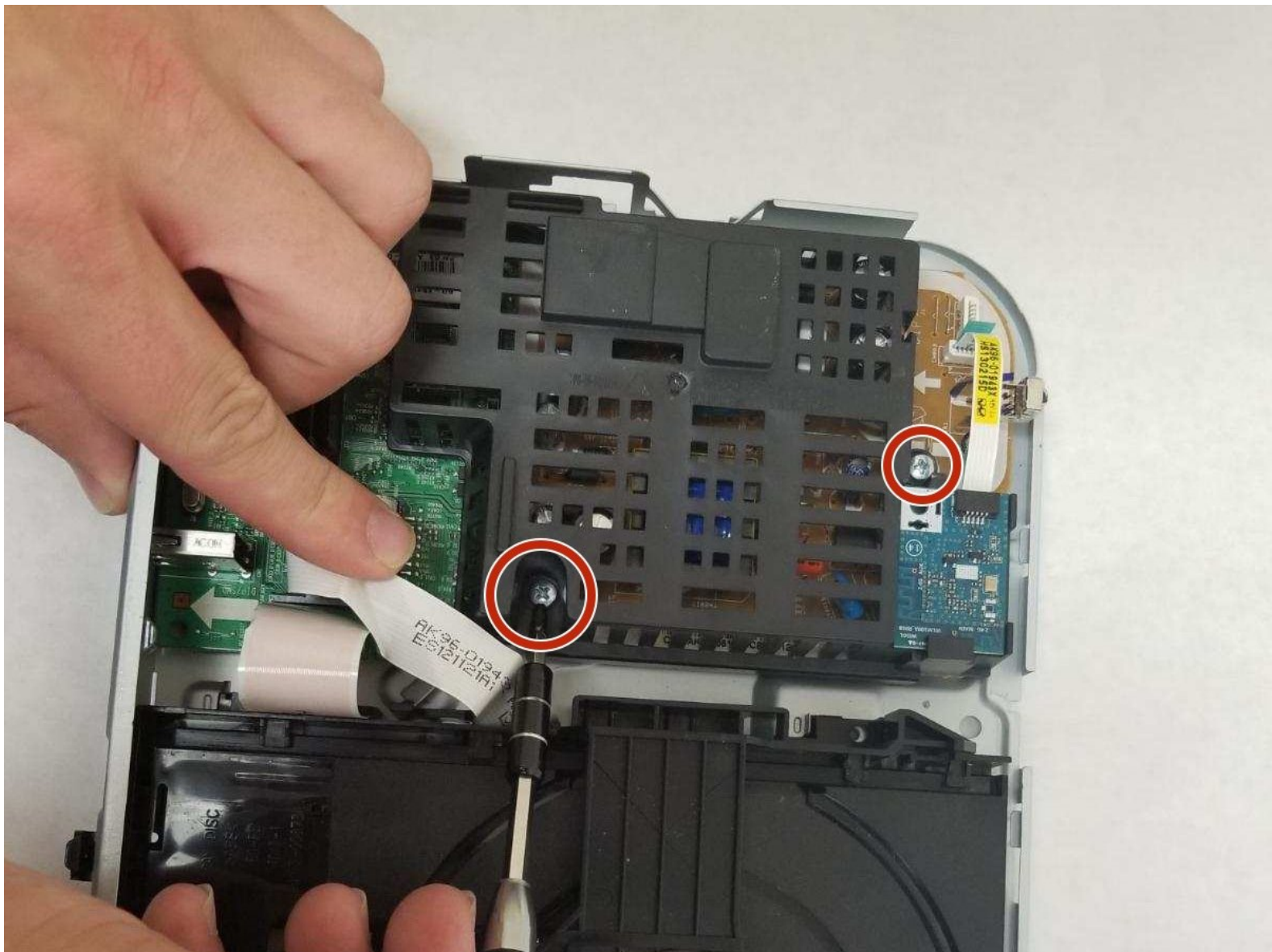




Samsung BD-E5400 Power Cord Replacement

This guide will show you how to replace the power cord for the Samsung BD-E5400.

Written By: Cameron Herring



INTRODUCTION

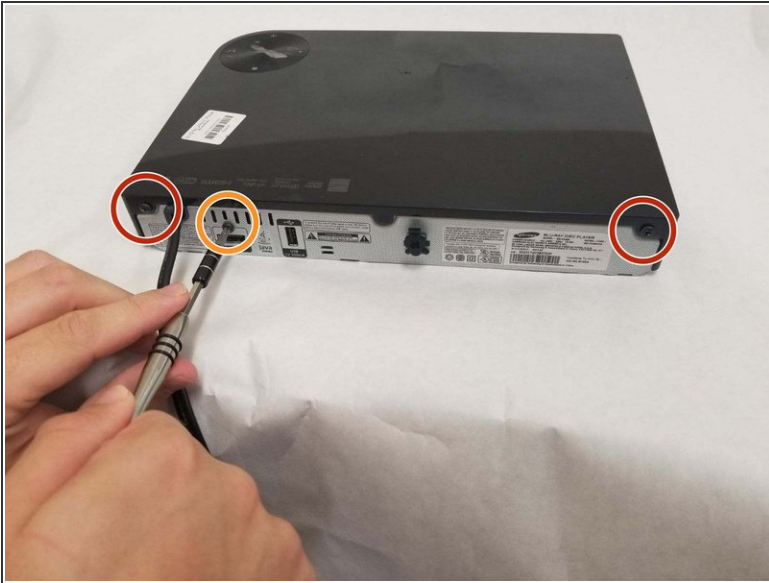
A device that fails to power on is not very useful. The Samsung BD-E5400 does not have a battery, so the likely source would be a damaged power cord. This guide will show you how to replace your power cord and restore your Samsung BD-E400 to its former glory!



TOOLS:

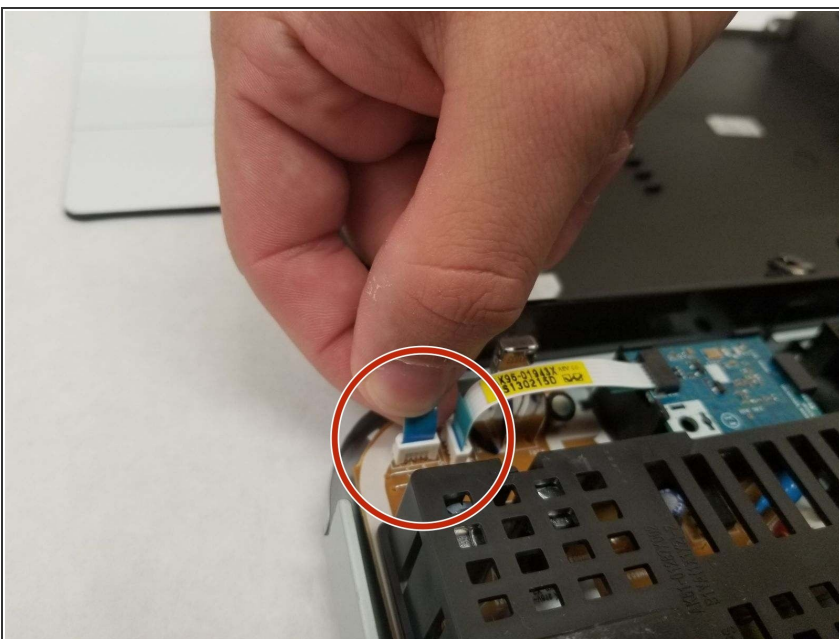
- [Phillips #1 Screwdriver](#) (1)
-

Step 1 — Outer Cover



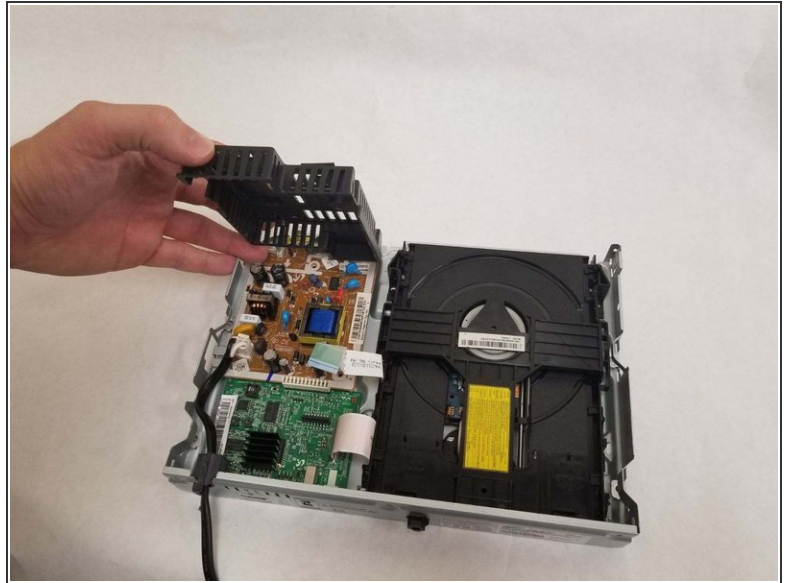
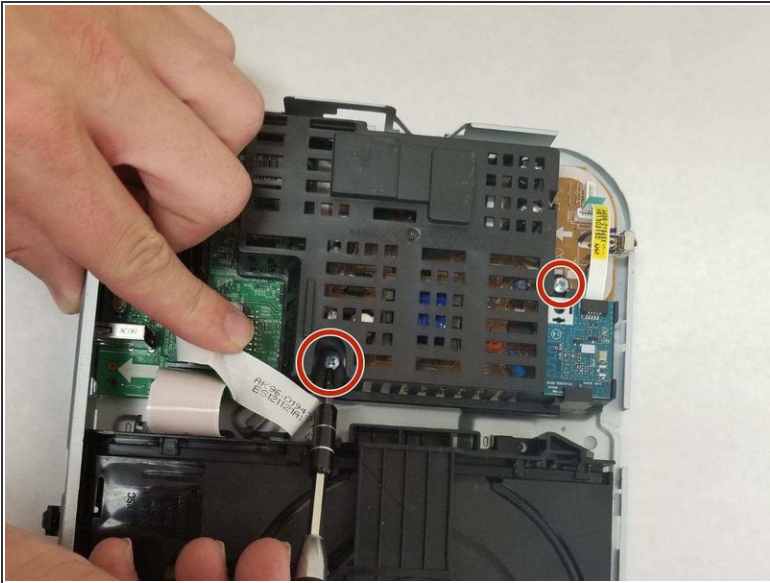
- Remove the two 10mm Phillips #1 screws.
- Remove the one 8 mm Phillips #1 screw.
- Carefully lift up the cover and lay back, to ensure that you do not damage the attached cable.

Step 2



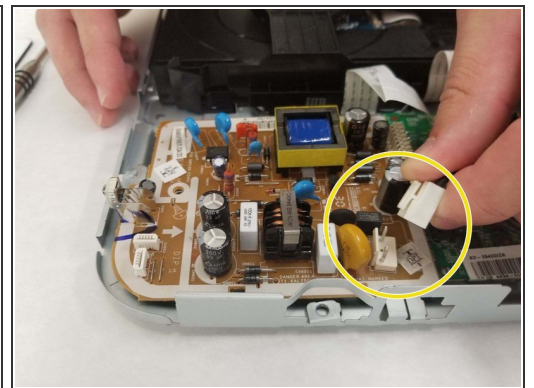
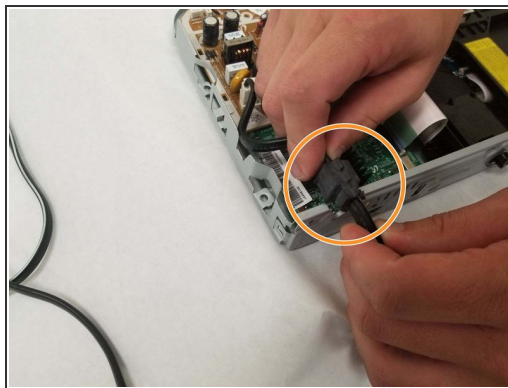
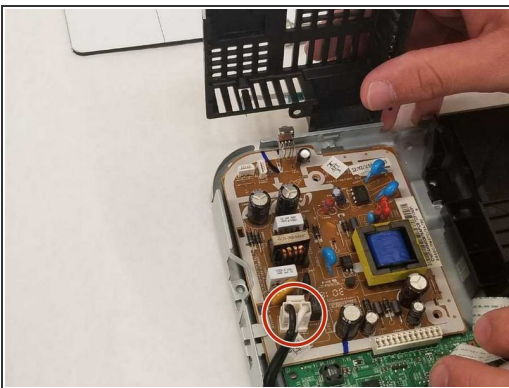
- Unplug the small wiring bundle attaching the body of the device to the cover.
- Lay the cover aside.

Step 3 — Power Cord



- Remove the two 8 mm long, #1 Phillips head screws.
- Lift up the plastic component cover to remove and lay aside.

Step 4



- With the motherboard exposed, locate the point where the power cord is attached.
- Separate the portion of the cord encased in the black grommet from the frame of the device.
- Unplug the power cord from the motherboard.

To reassemble your device, follow these instructions in reverse order.

This document was generated on 2019-10-28 10:51:54 AM (MST).

