



Samsung BD-F5700 DC Power Board Replacement

We will be replacing the power board on this Samsung BD-F7500. Replacing the DC power board will take anywhere from 15-20min

Written By: samer odeh



INTRODUCTION

A guide on how to replace a damaged DC power board on a Samsung BD-7500.



TOOLS:

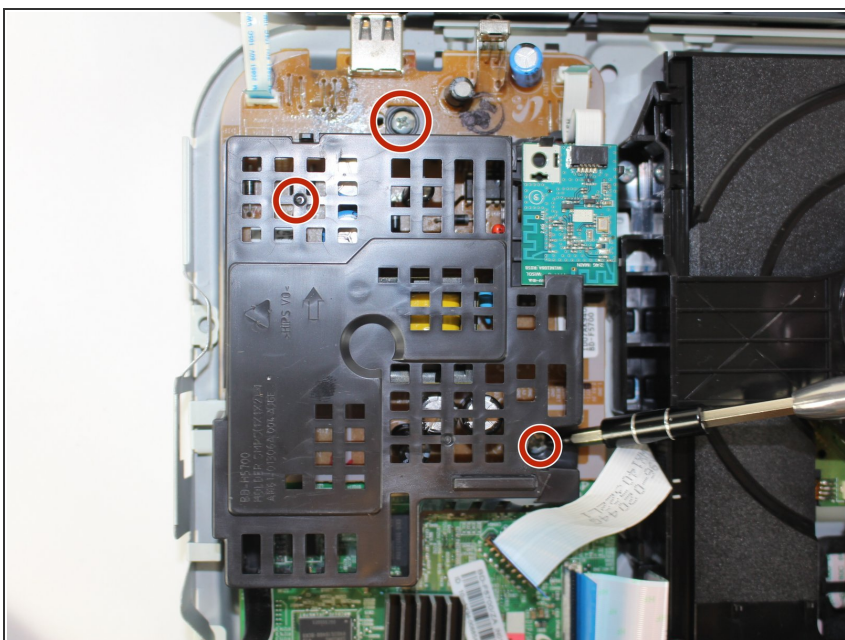
- [Phillips #1 Screwdriver](#) (1)
 - [Phillips #0 Screwdriver](#) (1)
-

Step 1 — DC Power Board



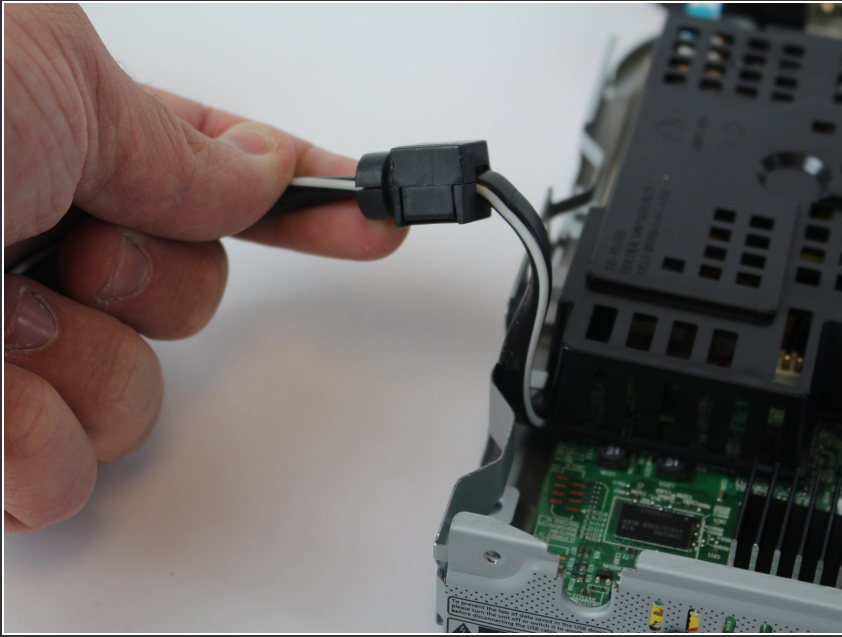
- Remove the three 10mm screws with a Phillips #0 screwdriver.
- Pry the top off with a plastic opening tool.

Step 2



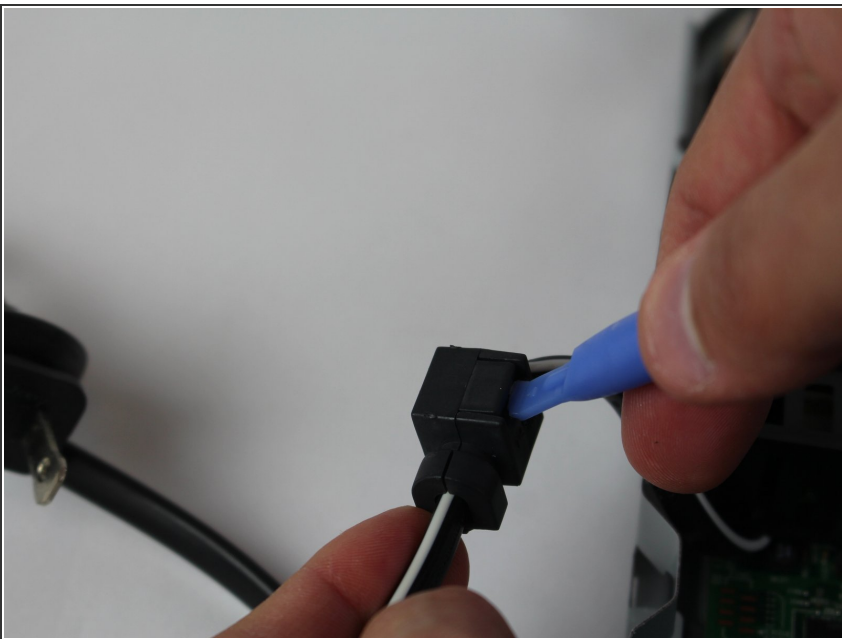
- Remove the three screws holding down the cover with a Phillips #0 screwdriver.

Step 3



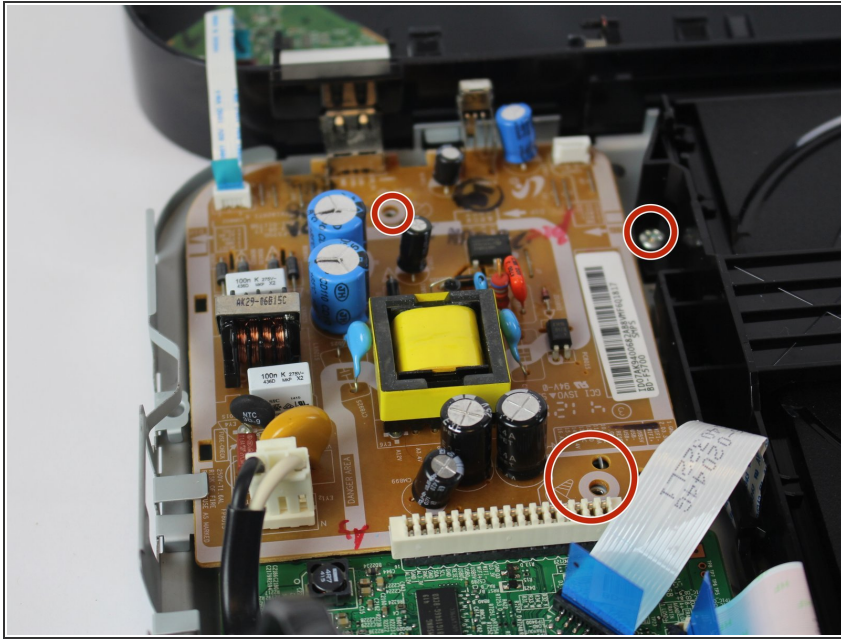
- Lift up the power cord at its base to remove it.

Step 4



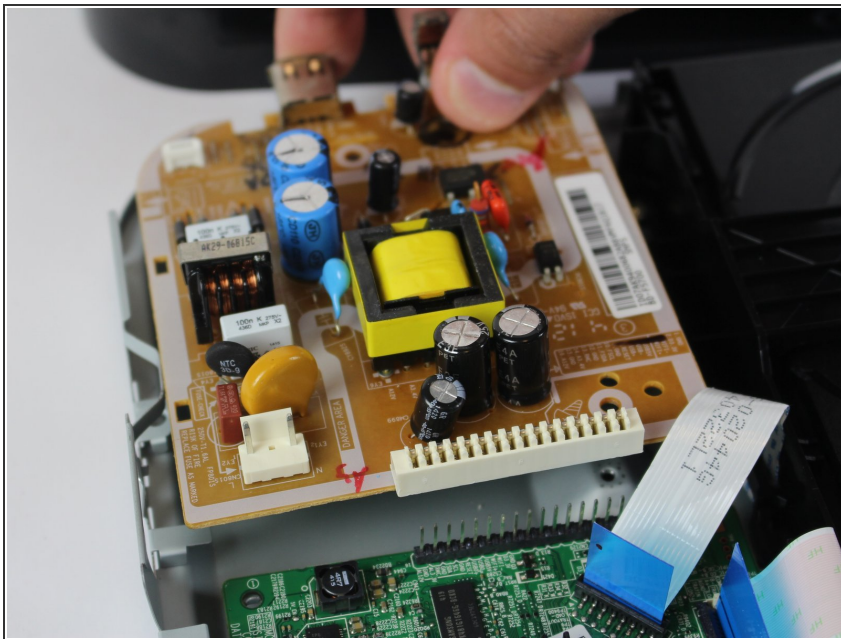
- Insert a plastic opening tool into the black plastic tab on the cord and twist to separate.

Step 5



- Remove the 7mm screw with a Phillips #1 screwdriver.
- Grip the blue tab attached to the base and pull upwards.

Step 6



- Grip the edges of the motherboard and pull upwards to remove.

To reassemble your device, follow these instructions in reverse order.