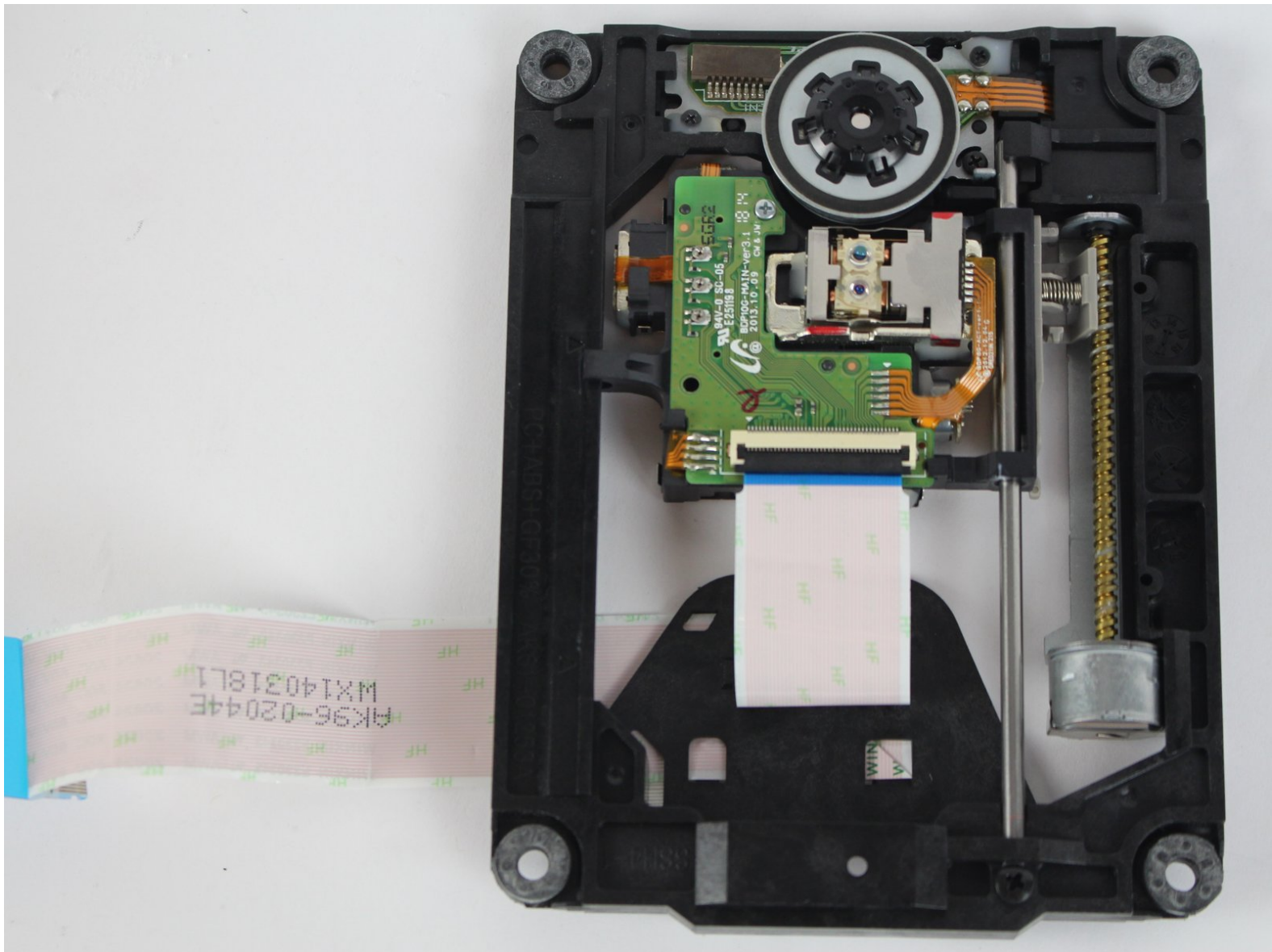




Samsung BD-F5700 Disc Reader Replacement

The following guide will show how to open the device and remove the disc reader.

Written By: Livan Perez



INTRODUCTION

This guide will show how the replacement of the disk reader is done.



TOOLS:

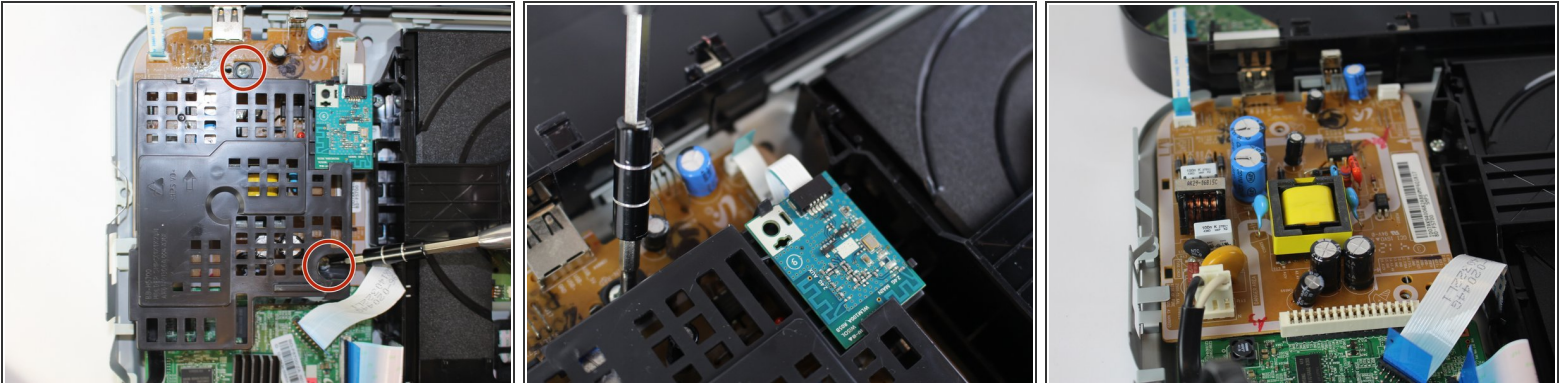
- [Phillips #0 Screwdriver](#) (1)
 - [Phillips #1 Screwdriver](#) (1)
 - [iFixit Opening Tools](#) (1)
-

Step 1 — Power Cord



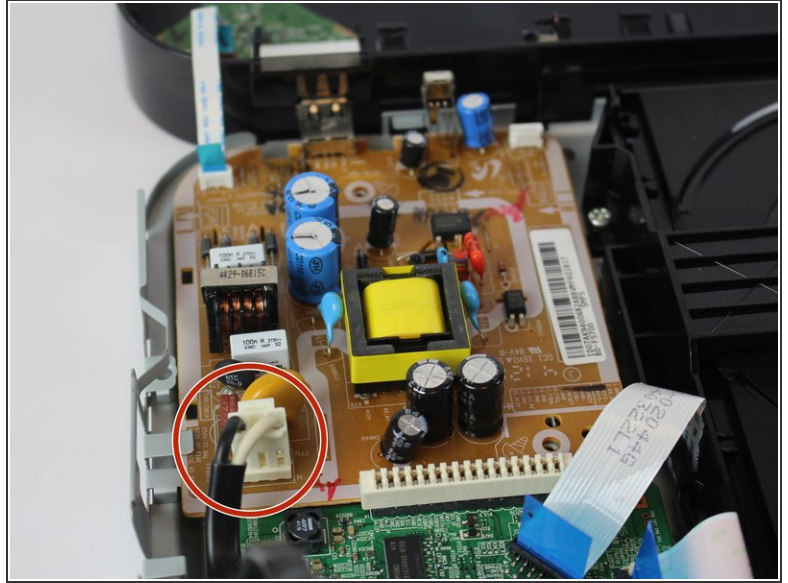
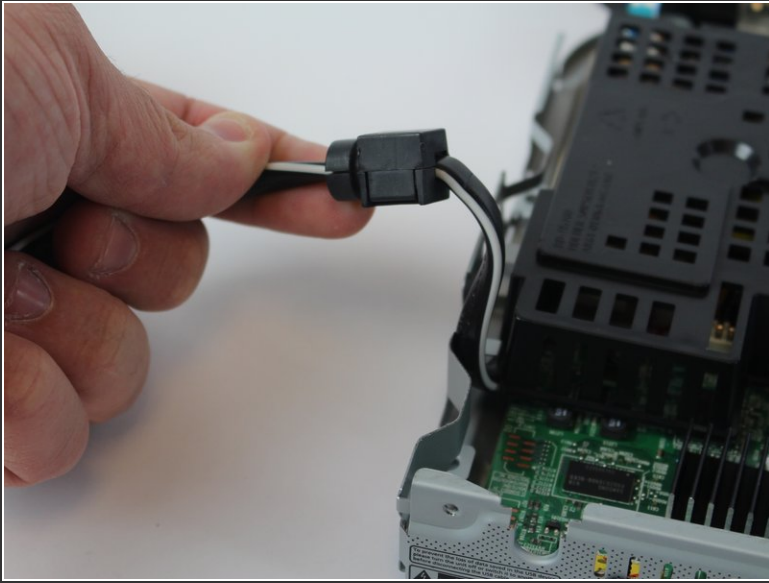
- Use Phillips 0 Screwdriver to remove two (2) 10 mm rear screws.
 - Use a plastic prying tool to help separate the top plastic casing from the bottom metal casing.
- ⚠ When opening the device, pay attention to the ribbon cable circled in image 3.

Step 2



- Use Phillips 0 screwdriver to remove two (2) 10 mm screws from the plastic cover
- Remove plastic cover from board.

Step 3



- Pull up on back of wire to dislocate black tab piece from device.
- To remove the cord from the device entirely, press on the white tab in the device and gently pull.

Step 4



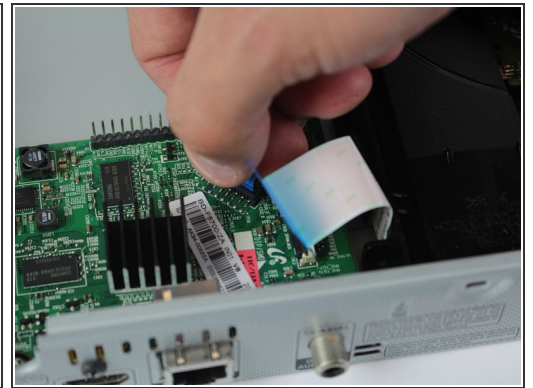
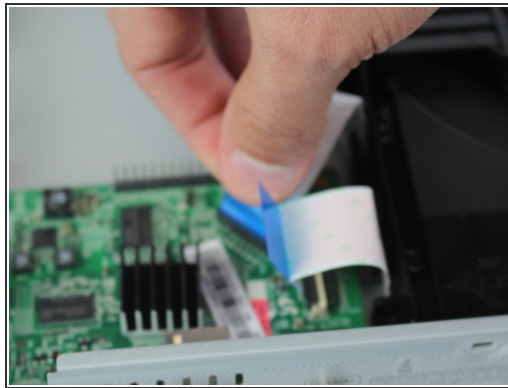
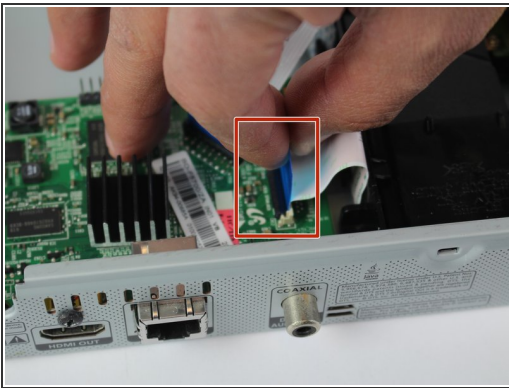
- Insert plastic prying tool into black tab on power cord, and use leverage to open the black tab.
- Pull the tab off the wire so that it can be placed on the replacement cord.

Step 5 — Disc Reader



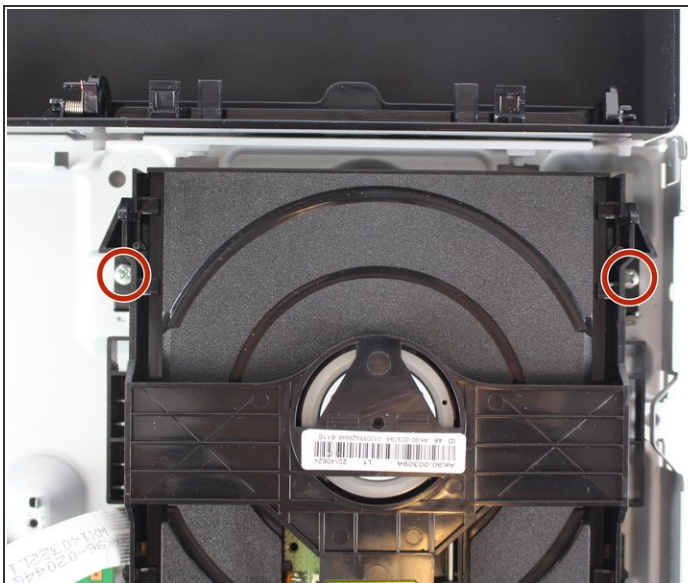
- Remove the two 10mm screws with a Phillips #1 screwdriver.
- Separate the two pieces with a plastic opening tool.

Step 6



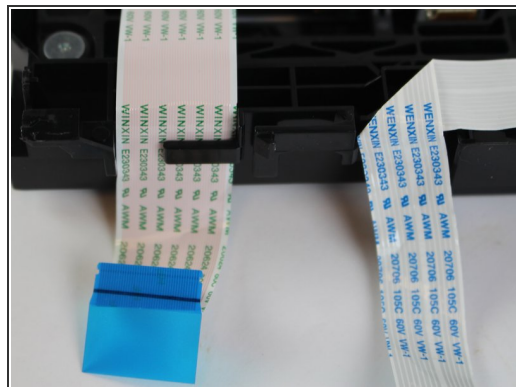
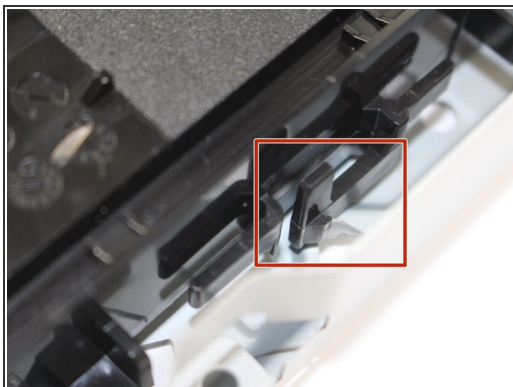
- firmly grip the hard plastic tab attached to the base and pull upwards. It is important no to tear the ribbon cables.

Step 7



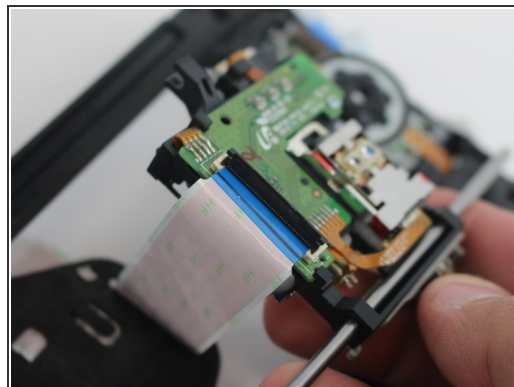
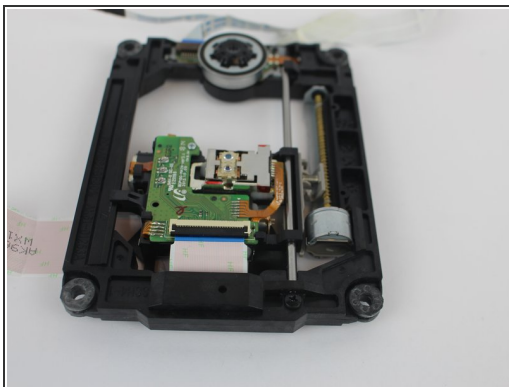
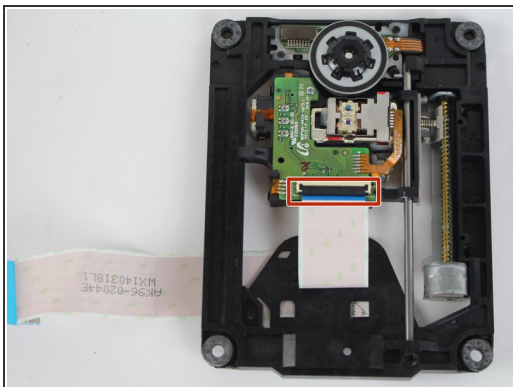
- Remove the two 7mm screws with a Phillips #1 screwdriver.

Step 8



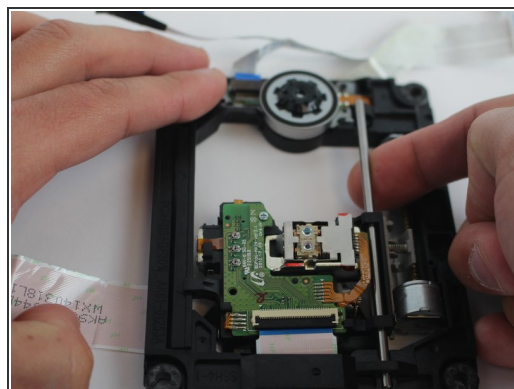
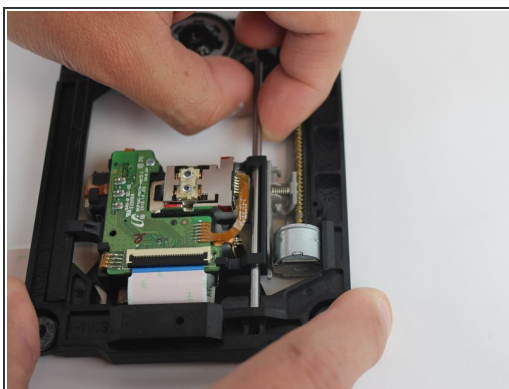
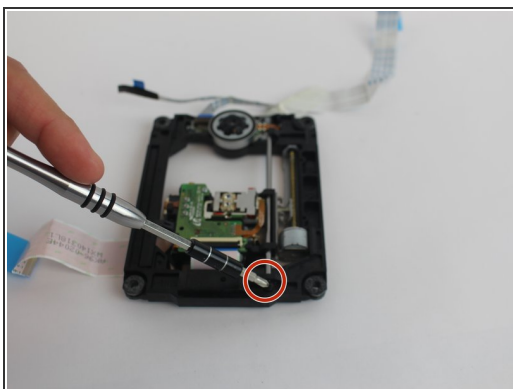
- Pinch both tabs on the side of the disc tray, push towards the front, and lift the disc tray out to remove.

Step 9



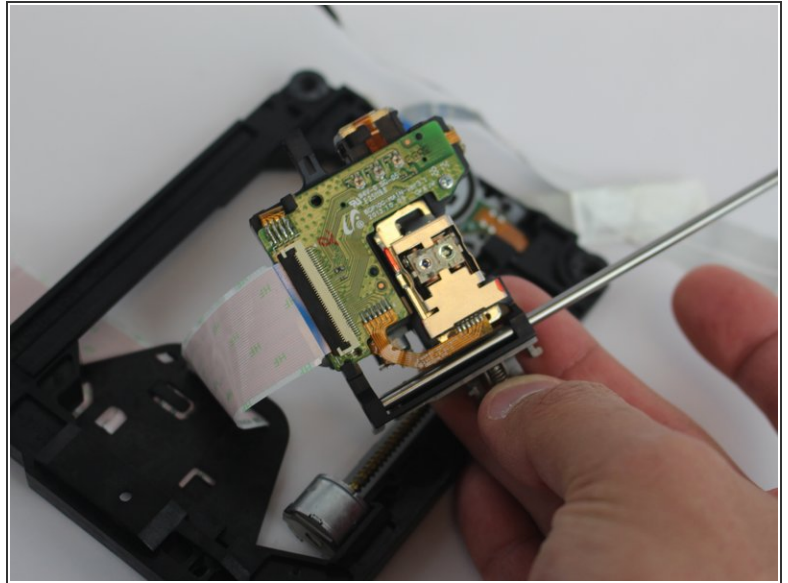
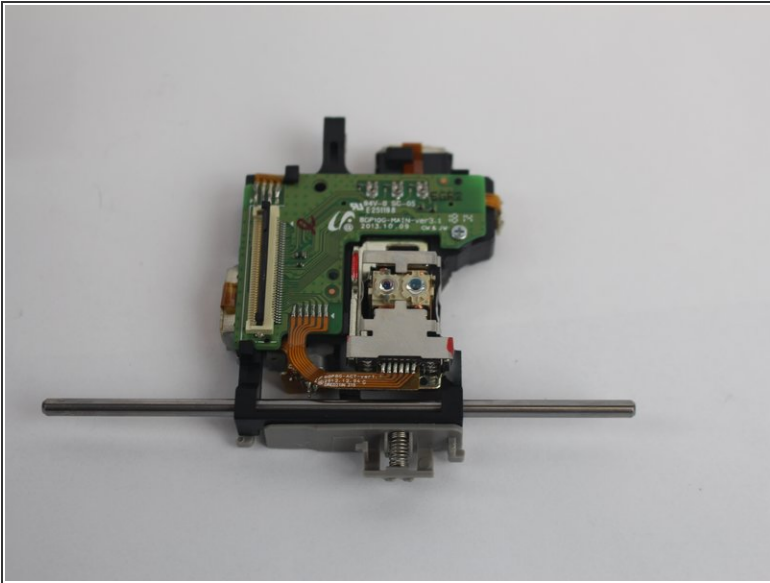
- Flip up the black locking tab on the ZIF connector.

Step 10



- Remove the 10 mm screw using head #J1 screwdriver.
- Remove the small metal bar by pulling it outwards.

Step 11



- Flip the disc tray over so the laser points downward.
- Pull the disc reader out of the disc tray.

To reassemble your device, follow these instructions in reverse order.