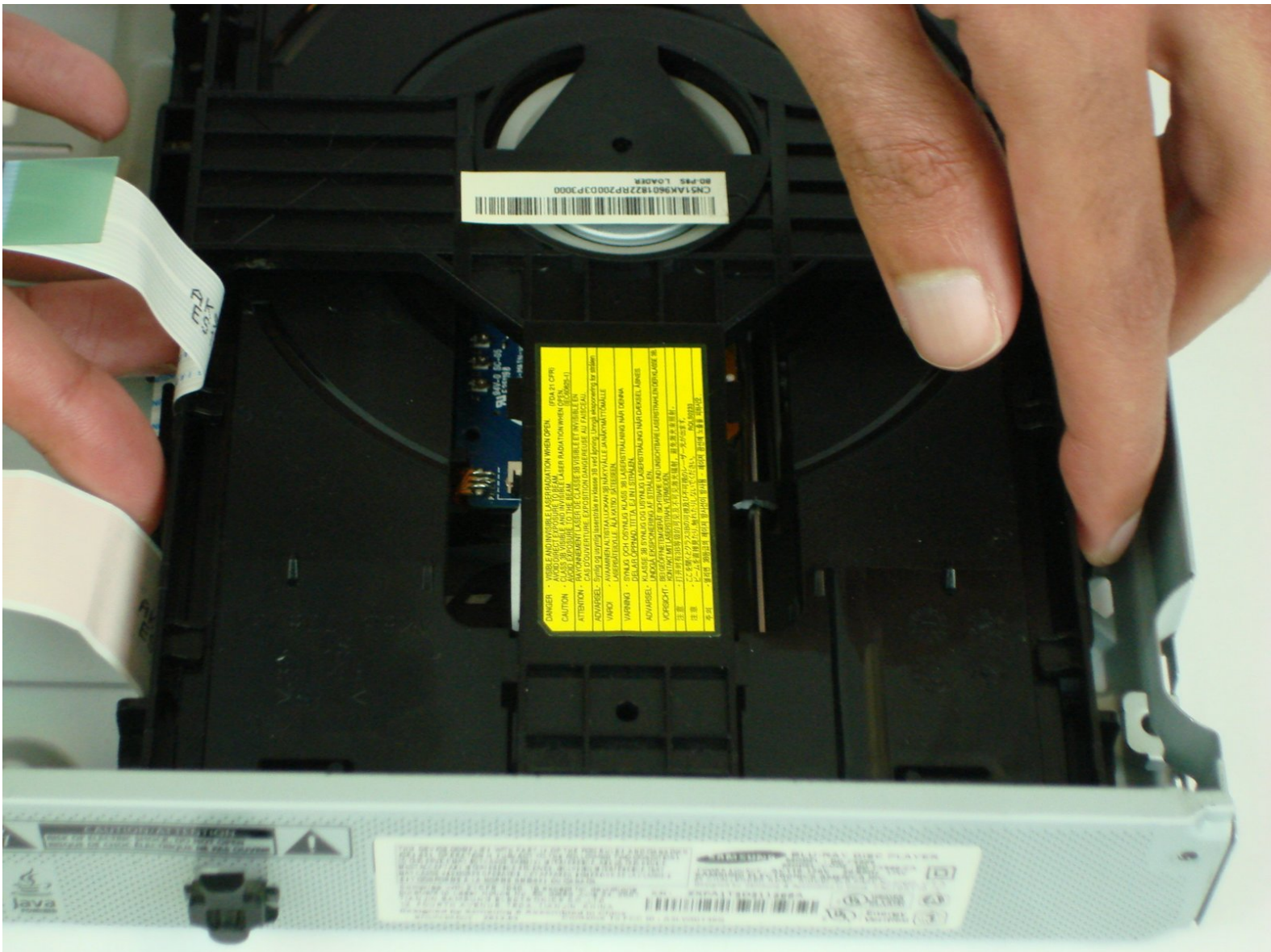




Samsung BD-F5900 DVD Disc Tray Replacement

This guide helps explain how to replace the DVD disc tray on the Samsung BD-F5900 Blu-ray player. In the event that the disc tray has failed.

Written By: Louis McKean



INTRODUCTION

Is your Blu-ray player not able to play your favorite flicks due to a faulty disc drive? If so, all you need is a #1 Phillips screwdriver and this guide to show how to replace the DVD disc tray with a new one.

TOOLS:

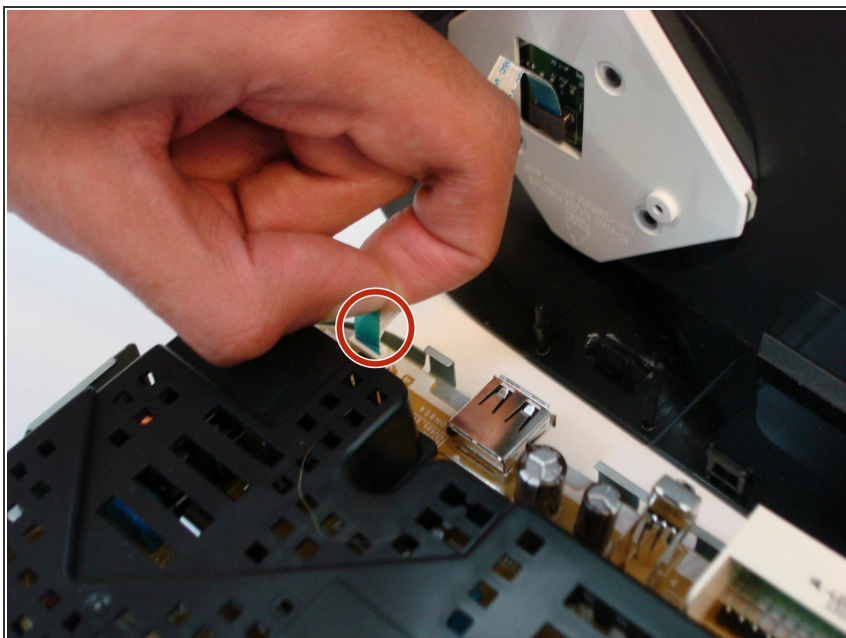
- [Phillips #1 Screwdriver](#) (1)
-

Step 1 — Top Cover



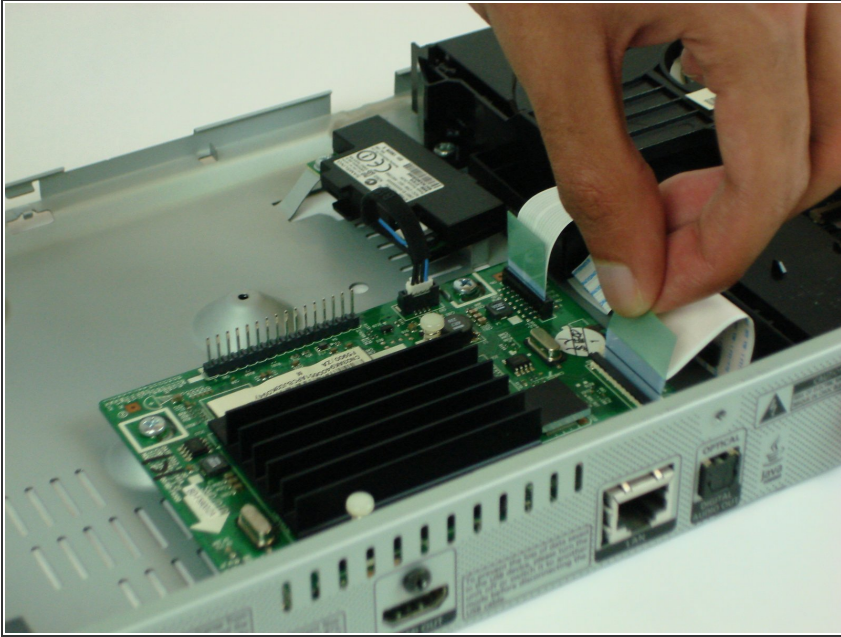
- Using a #1 Phillips head screwdriver, remove the three 10mm screws on the back panel.
- Tilt the back of the top cover forward to remove from chassis.

Step 2



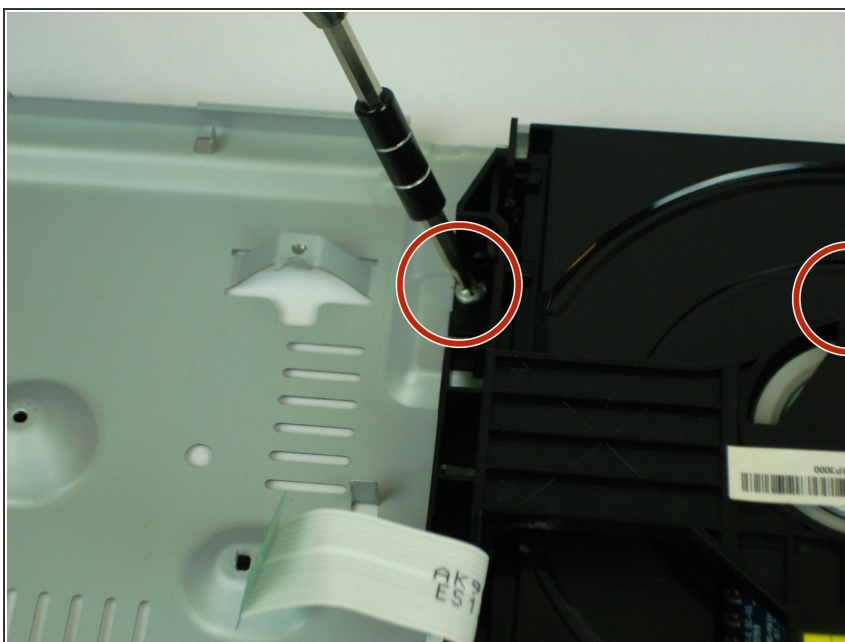
- Gently pull up on the ribbon cable by the blue tab to remove it from the power supply board.

Step 3 — DVD Disc Tray



- Remove the two ribbon cables from the Main Logic Board assembly by gently pulling up on the blue tab.
- ⚠ Be careful not to damage the ribbon cable by using too much force.

Step 4



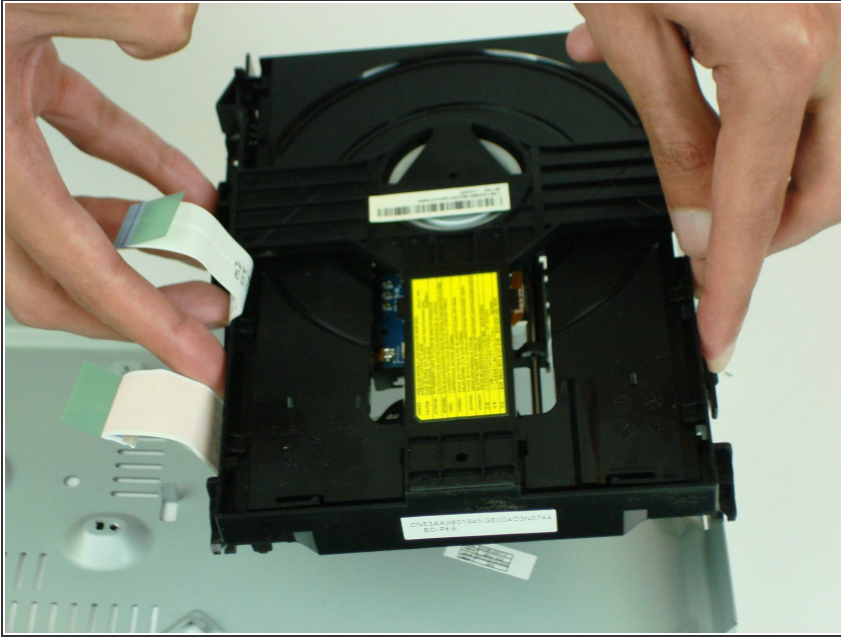
- Using a #1 Phillips head screwdriver, remove the two 7.5 mm screws (*one not shown*) near the front that secures the disc tray to the chassis.

Step 5



- Push two small prongs on either side of disc tray inwards and push disc tray forward.

Step 6



- Remove disc tray

To reassemble your device, follow these instructions in reverse order.