



# Samsung BD-F5900 Top Cover Replacement

This guide will explain how to remove the top cover and gain access inside the Samsung BD-F5900 Blu-ray player

Written By: Louis McKean



---

## INTRODUCTION

If you ever have a need access any of the components inside the device, the first thing you have to do is remove the top cover. If you follow these easy steps, you should have no problem.

---



### TOOLS:

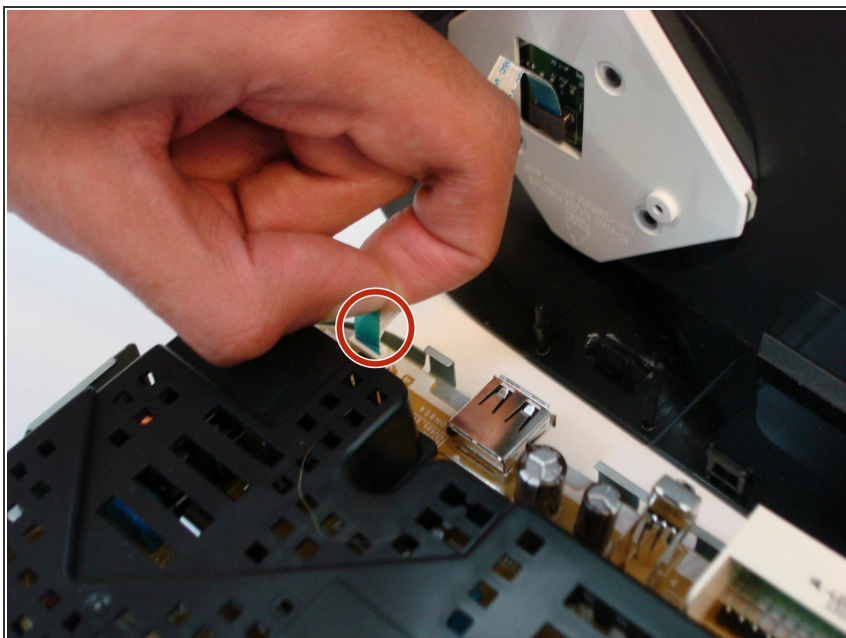
- [Phillips #1 Screwdriver](#) (1)
-

## Step 1 — Top Cover



- Using a #1 Phillips head screwdriver, remove the three 10mm screws on the back panel.
- Tilt the back of the top cover forward to remove from chassis.

## Step 2



- Gently pull up on the ribbon cable by the blue tab to remove it from the power supply board.

To reassemble your device, follow these instructions in reverse order.