



Samsung BD-F7500 Blu-ray Player Disc Tray Replacement

This guide will teach you how to replace the disc drive.

Written By: James McMichael



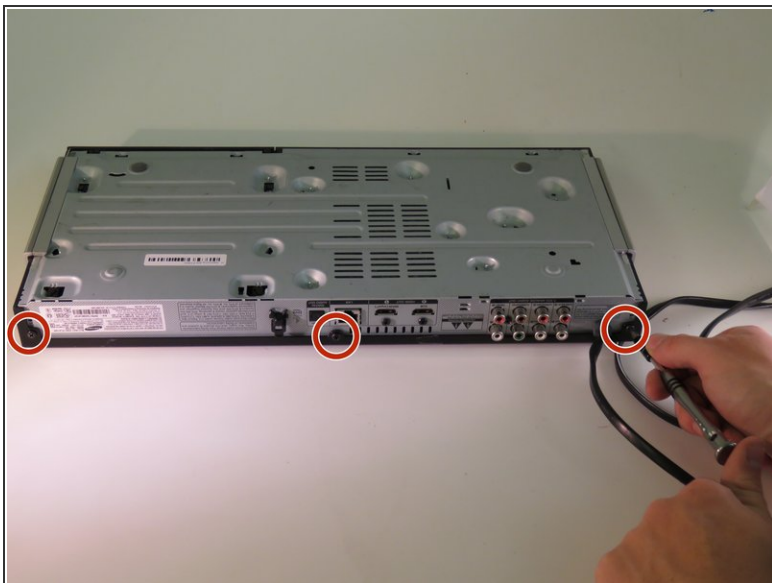
INTRODUCTION

This guide will open up the device and remove the disc tray.

TOOLS:

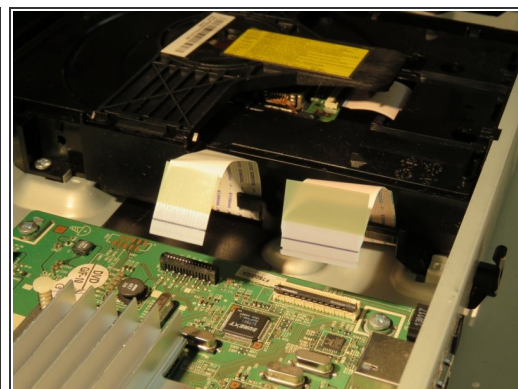
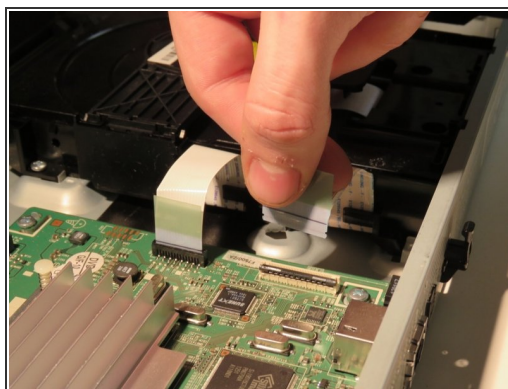
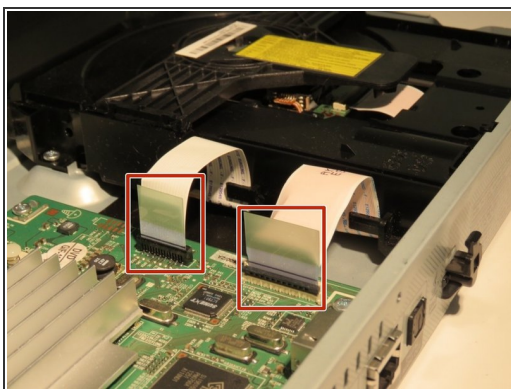
- [Phillips #1 Screwdriver](#) (1)
-

Step 1 — Disc Tray



- Use a Phillips head #J1 screwdriver to remove all three (3) 10 mm screws.

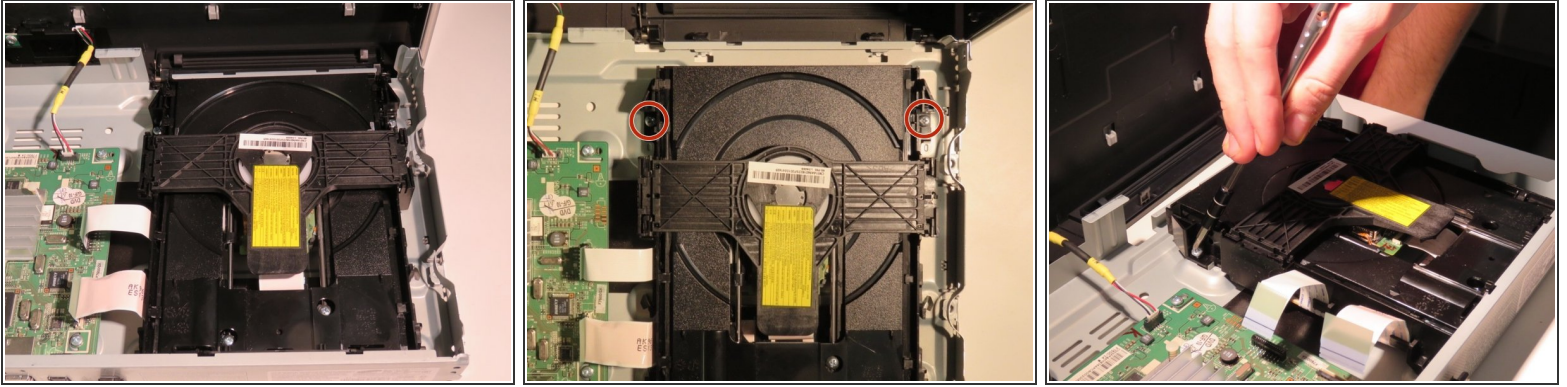
Step 2



- To remove each ribbon cable, firmly grip the hard plastic tab attached to the base and pull upwards.

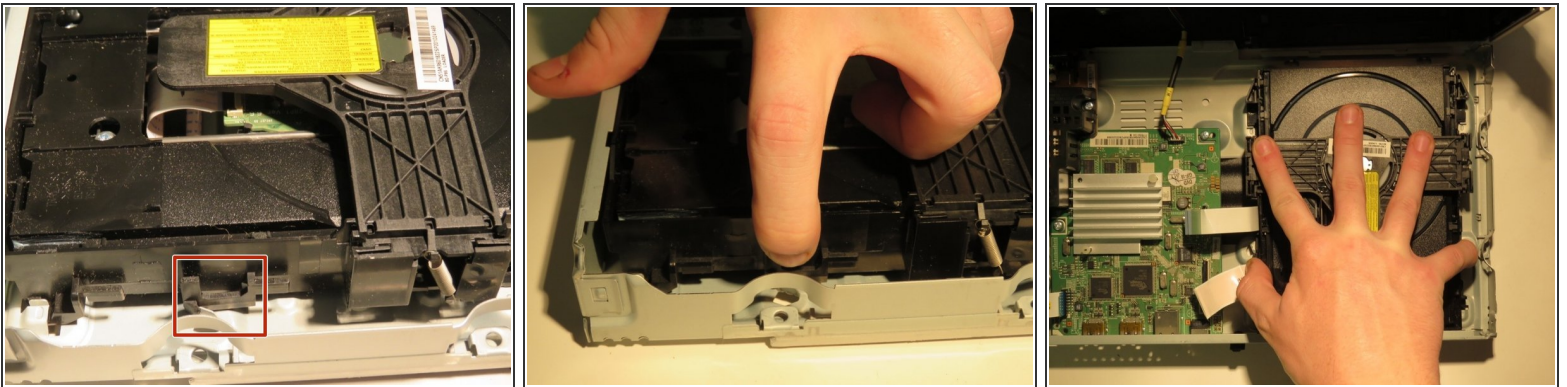
⚠ Be careful not to tear the ribbon cables.

Step 3



- Using a screwdriver with a #J1 bit, remove the two (2) 7 mm screws.

Step 4



- Locate the two black tabs on each side of the disc tray. The second tab is located in the same location on opposite side of marked tab.
- While pinching both tabs, slightly push the disc tray towards the front of the device, and lift the disc tray out.

To reassemble your device, follow these instructions in reverse order.