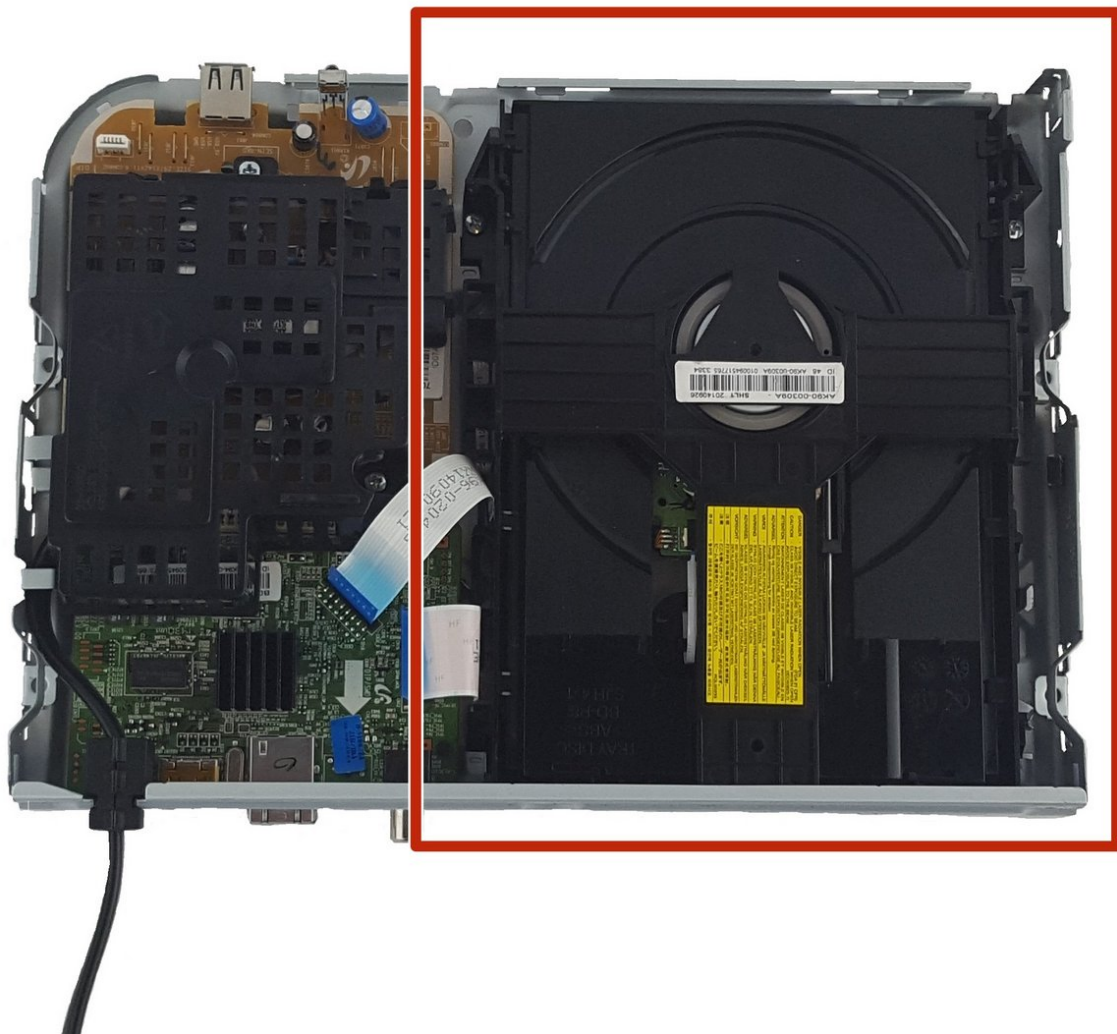




Samsung BD-H5100 Disk Tray Replacement

This guide will teach how to remove and replace the disk tray.

Written By: Mira Patel



INTRODUCTION

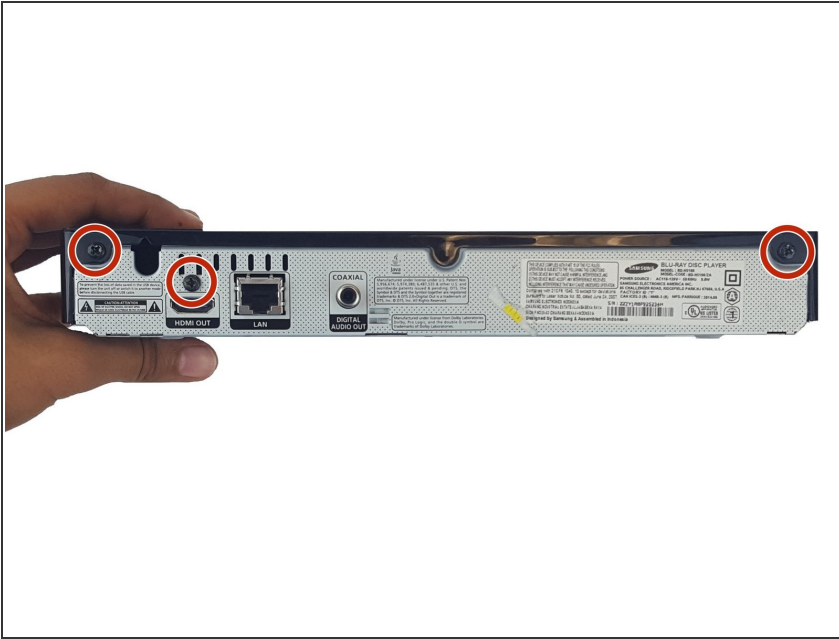
This guide will teach how to remove and replace the disk tray.



TOOLS:

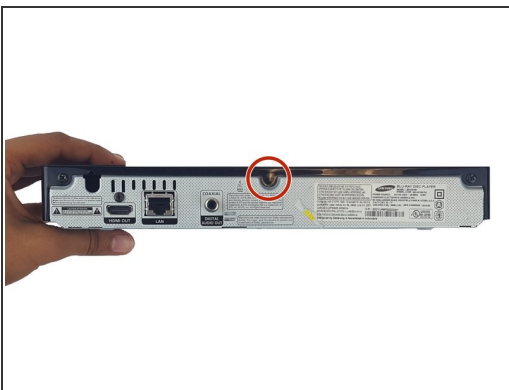
- [Phillips #2 Screwdriver](#) (1)
 - [Spudger](#) (1)
-

Step 1 — Disk Tray



- Use the Phillips Head #2 screwdriver to remove the three 10mm screws on the back panel.

Step 2



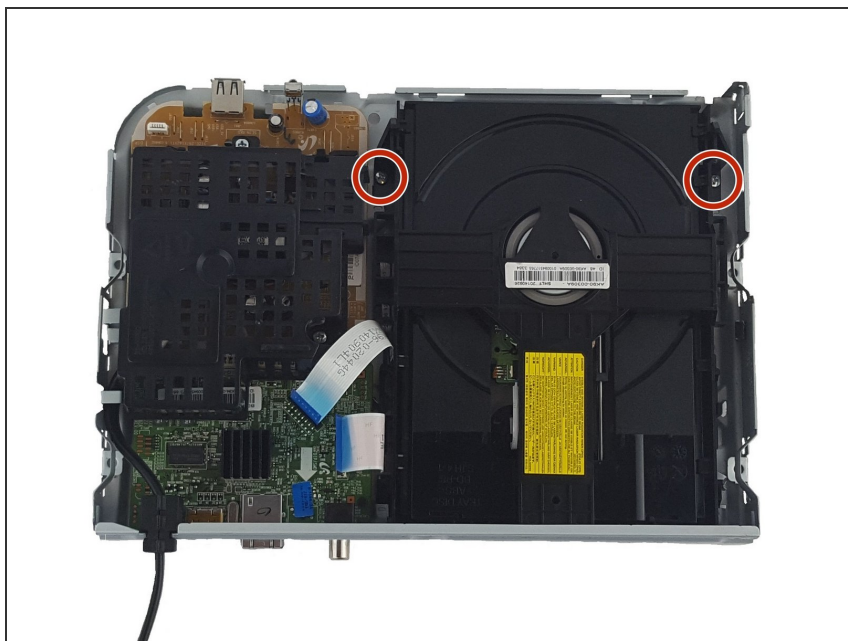
- Use the plastic spudger to pry open the top panel.
- ⚠ Be careful not to break the ribbon connecting the motherboard on the bottom panel to the top panel.

Step 3



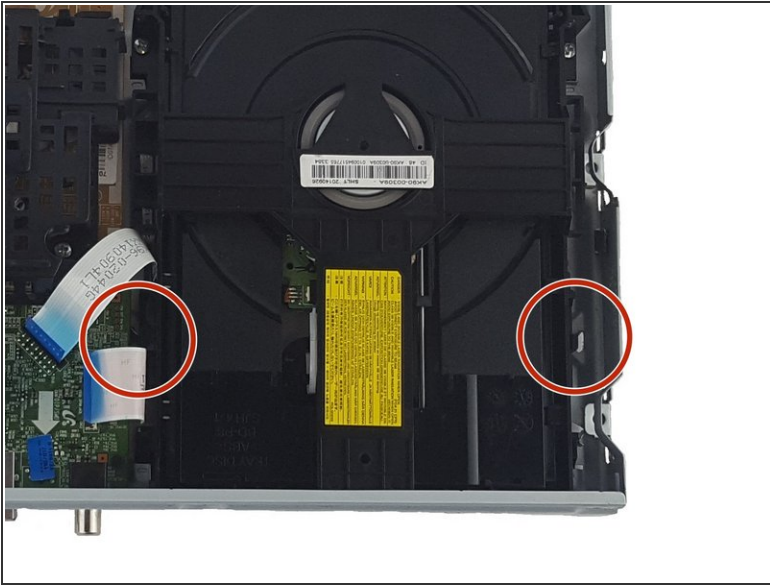
- Pull the ribbons gently from one corner by the blue tabs to remove it.

Step 4



- Remove the two 7.5 screws on both sides of the disk tray with Phillips Head #2 screwdriver.

Step 5



- Push two small prongs on both sides inwards and push forward.
- Remove the disk tray.

To reassemble your device, follow these instructions in reverse order.