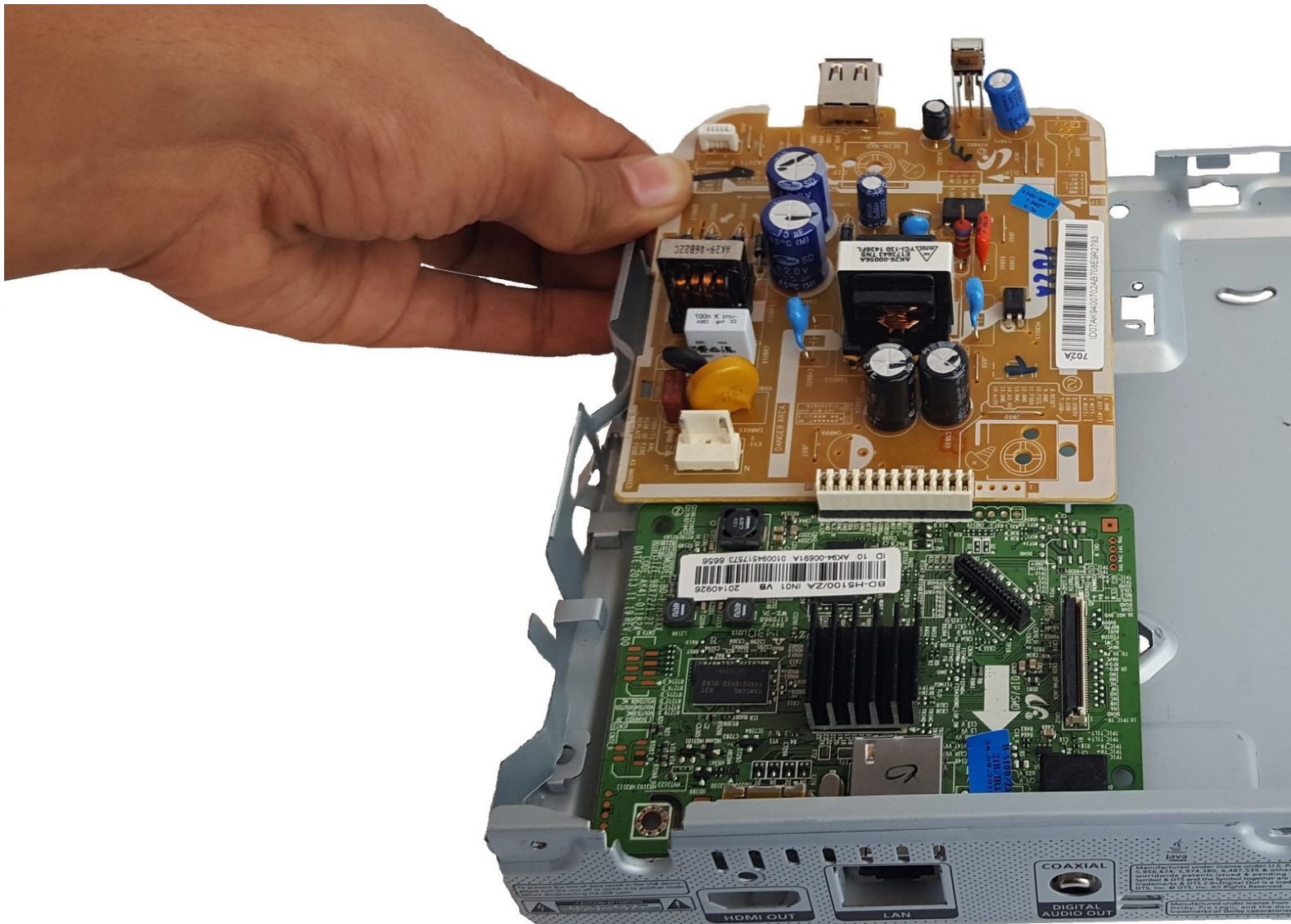




# Samsung BD-H5100 Motherboard Replacement

This guide will show how to replace the Motherboard.

Written By: Mira Patel



---

# INTRODUCTION

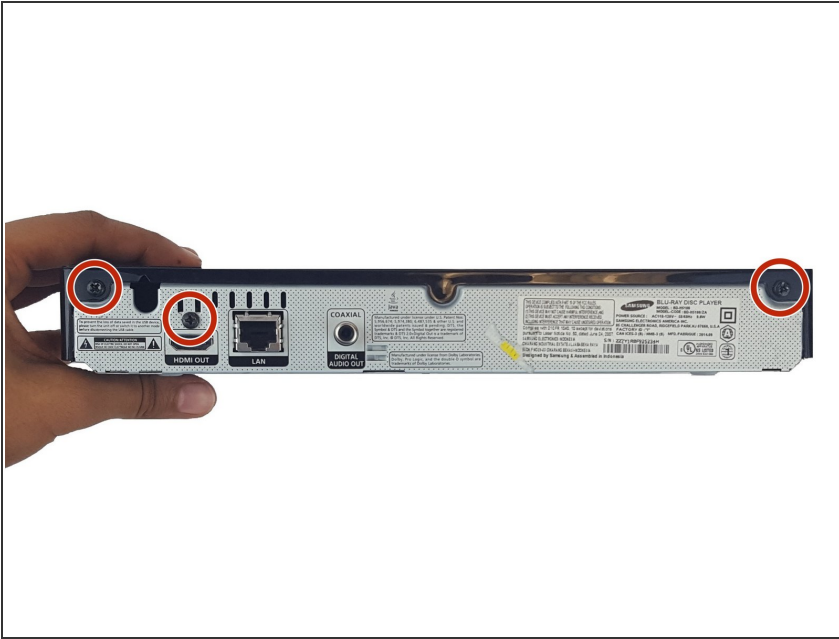
This guide will show how to replace the Motherboard.



## TOOLS:

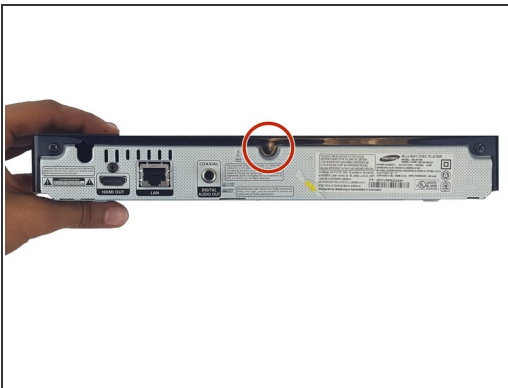
- [64 Bit Driver Kit](#) (1)
  - [Phillips #0 Screwdriver](#) (1)
  - [Spudger](#) (1)
-

## Step 1 — Motherboard



- Use the Phillips Head #2 screwdriver to remove the three 10mm screws on the back panel.

## Step 2



- Use the plastic spudger to pry open the top panel.

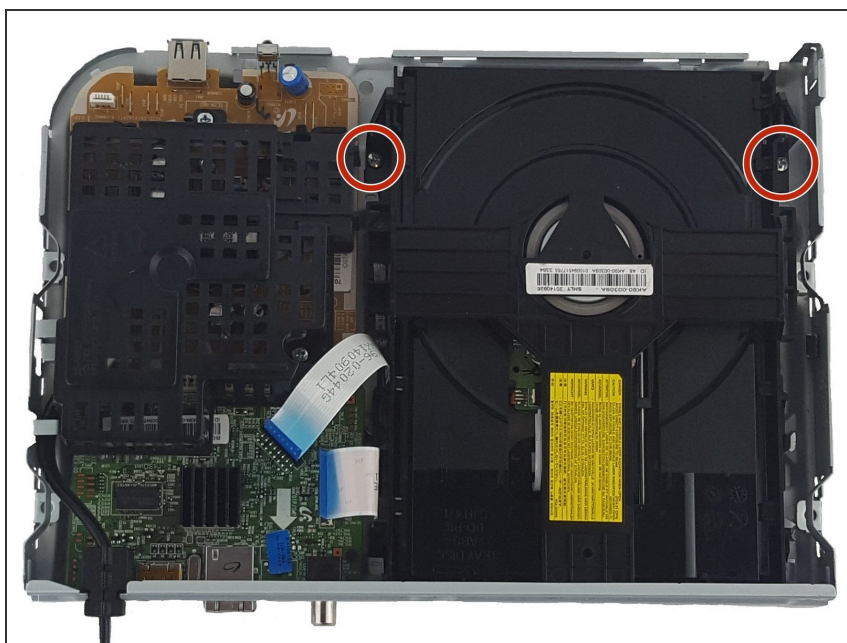
⚠ Be careful not to break the ribbon connecting the motherboard on the bottom panel to the top panel.

## Step 3



- Pull the ribbons gently from one corner by the blue tabs to remove it.

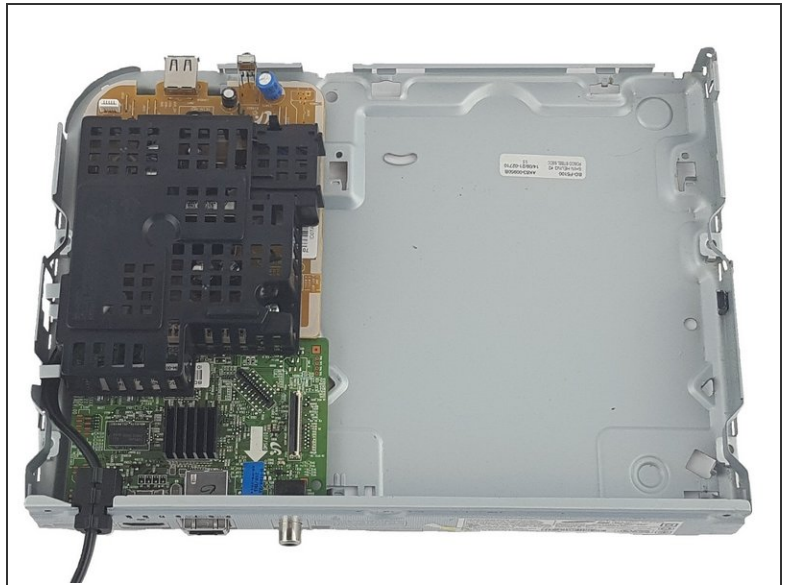
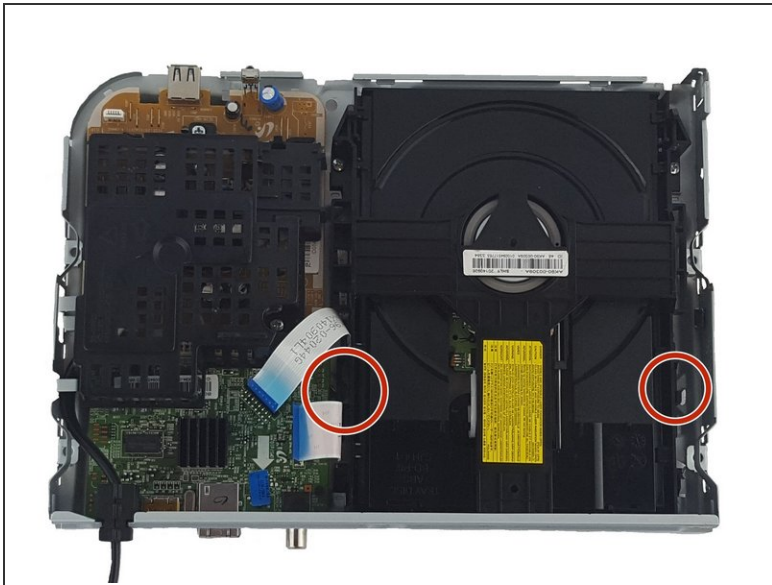
## Step 4



- Remove the two 7.5mm screws on both sides of the disk tray with Phillips Head #2 screwdriver.

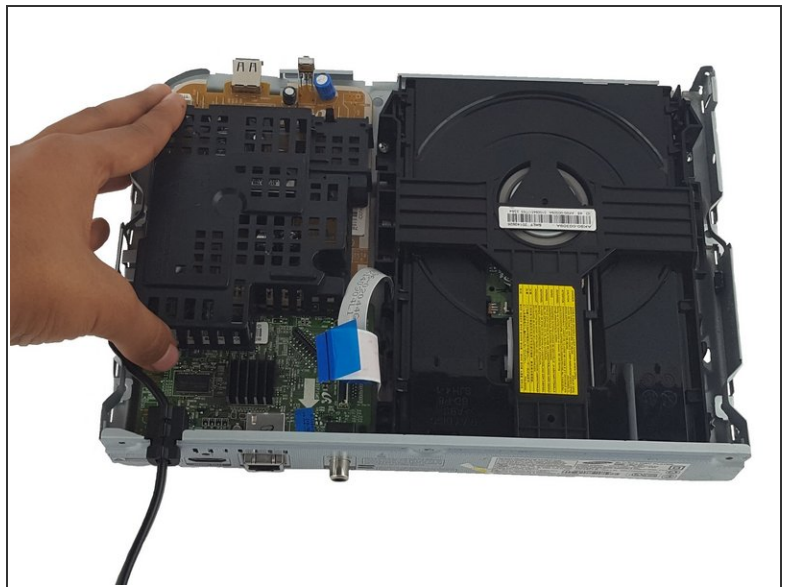
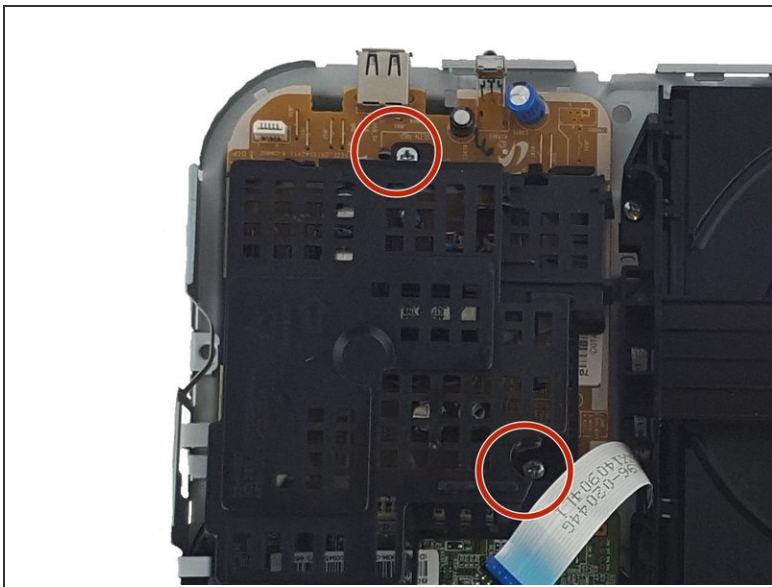


## Step 5



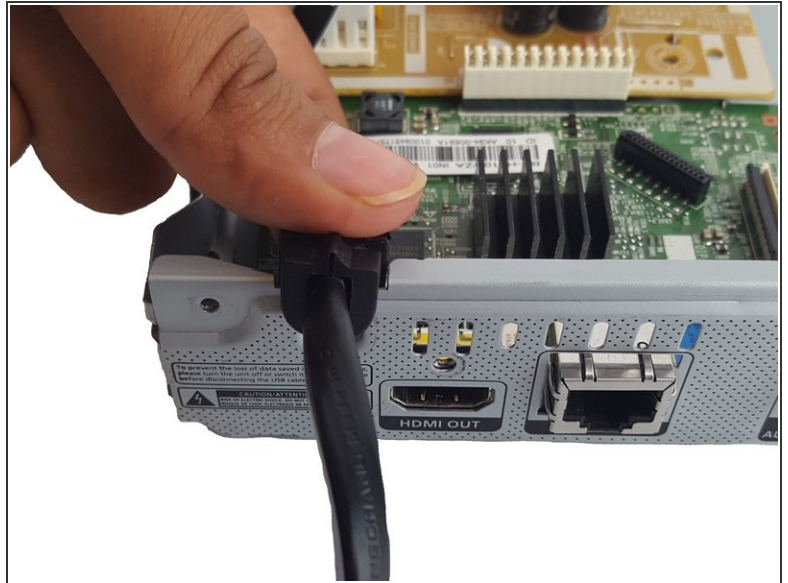
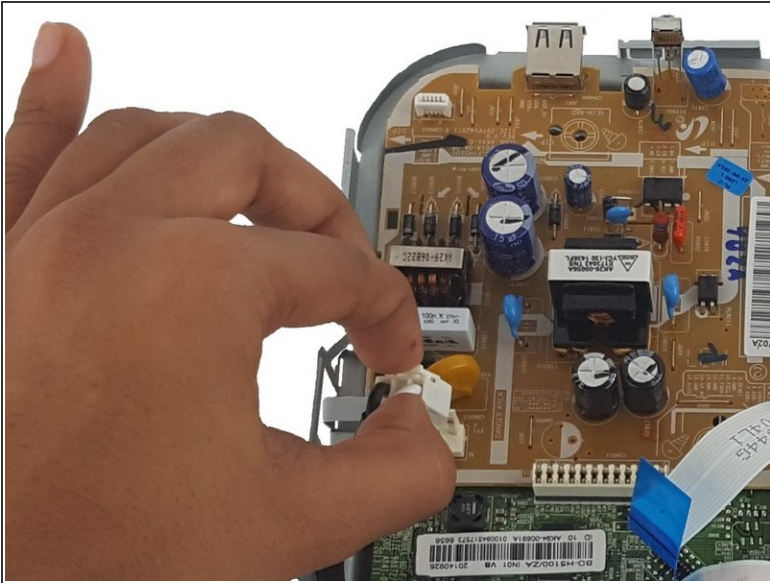
- Push two small prongs on both sides inwards and push forward.
- Remove the disk tray.

## Step 6



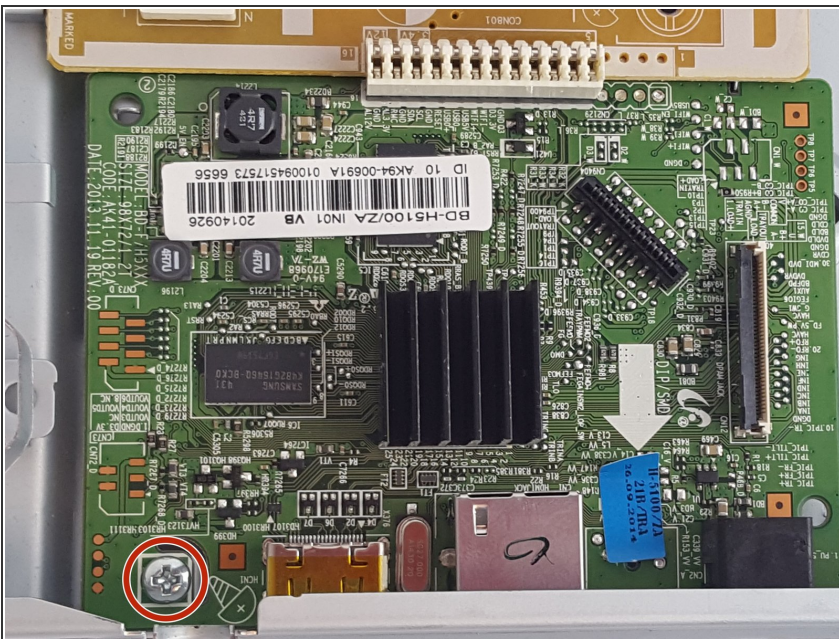
- Use a Phillips Head #2 to remove the two 7.5mm screws on the black cover.
- Remove the black cover.

## Step 7



- Pinch the white clip and pull straight up on the power cord.
- Remove the power cord.

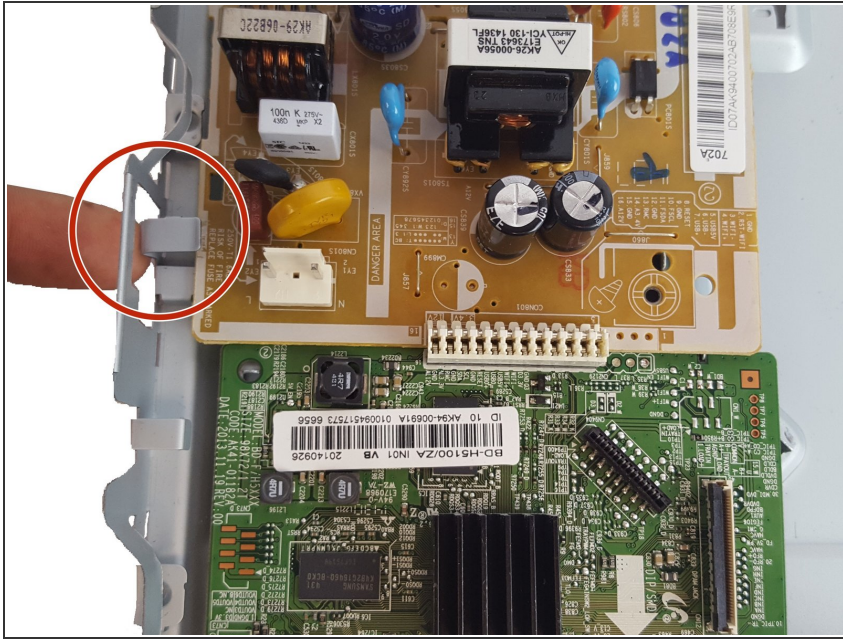
## Step 8



- Use a Phillips Head #2 to remove the 7.5mm screw.

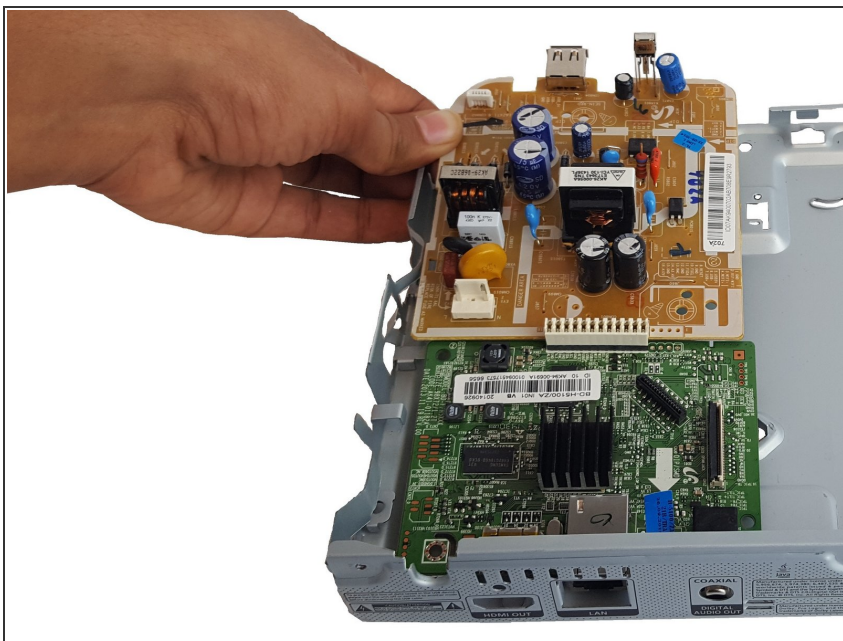


## Step 9



- Use your finger to pry the metal tab slightly up.
- ⓘ This may break after several uses.

## Step 10



- Slide out the Motherboard.
- ⚠ Be careful when touching the bottom because it is sharp.

To reassemble your device, follow these instructions in reverse order.