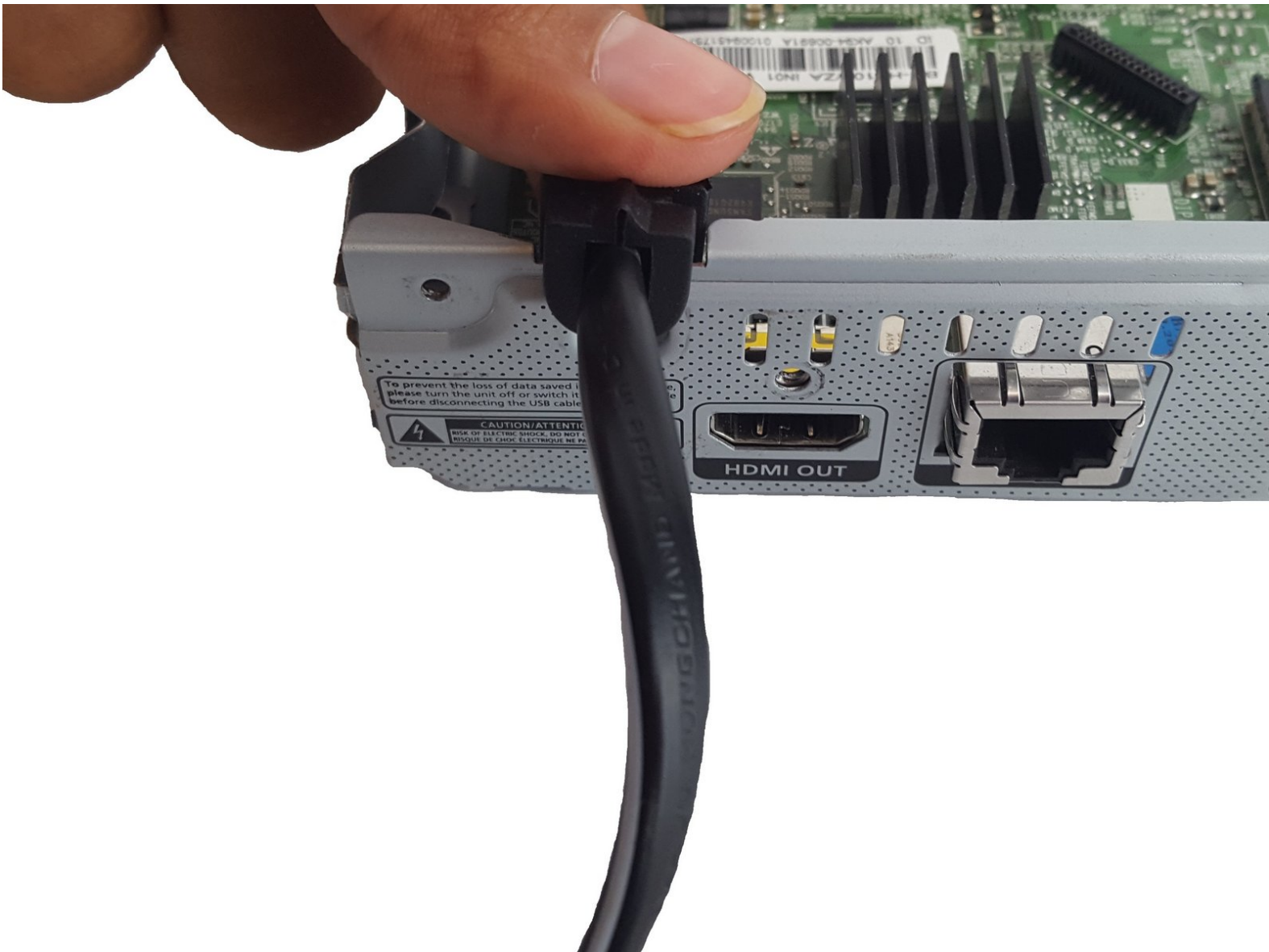




Samsung BD-H5100 Power Cord Replacement

This guide will teach how to replace the power cord.

Written By: Mira Patel



INTRODUCTION

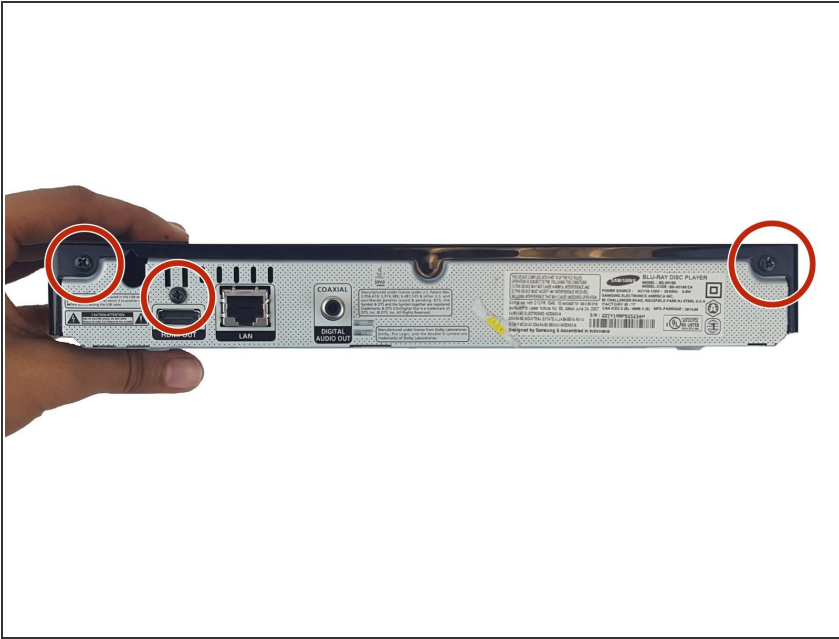
The Blu-Ray Player will be opened and the power cord removed.



TOOLS:

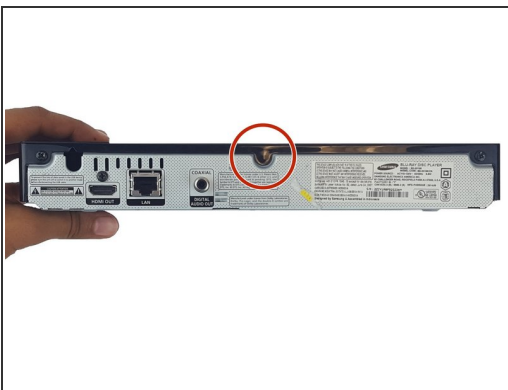
- [Spudger](#) (1)
 - [Phillips #00 Screwdriver](#) (1)
 - [64 Bit Driver Kit](#) (1)
-

Step 1 — Power Cord



- Use the Phillips Head #2 screwdriver to remove the three 10mm screws on the back panel.

Step 2



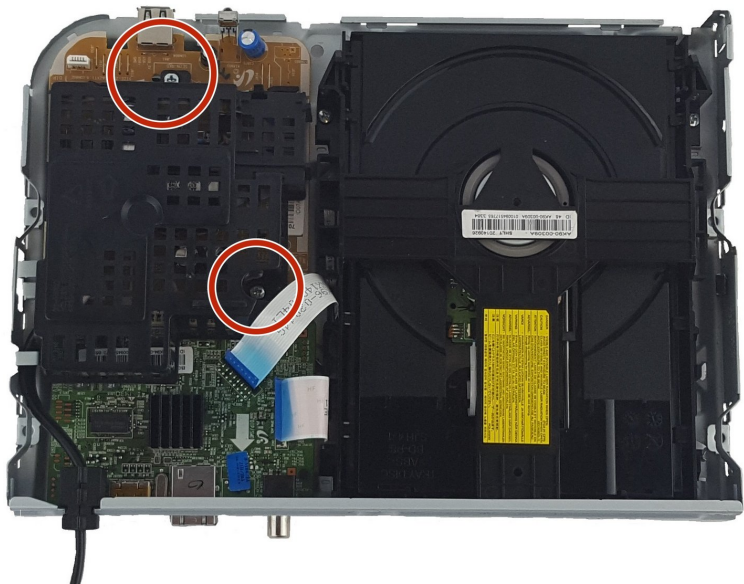
- Use the plastic spudger to pry open the top panel.
- ⚠ Be careful not to break the ribbon connecting the motherboard on the bottom panel to the top panel.

Step 3



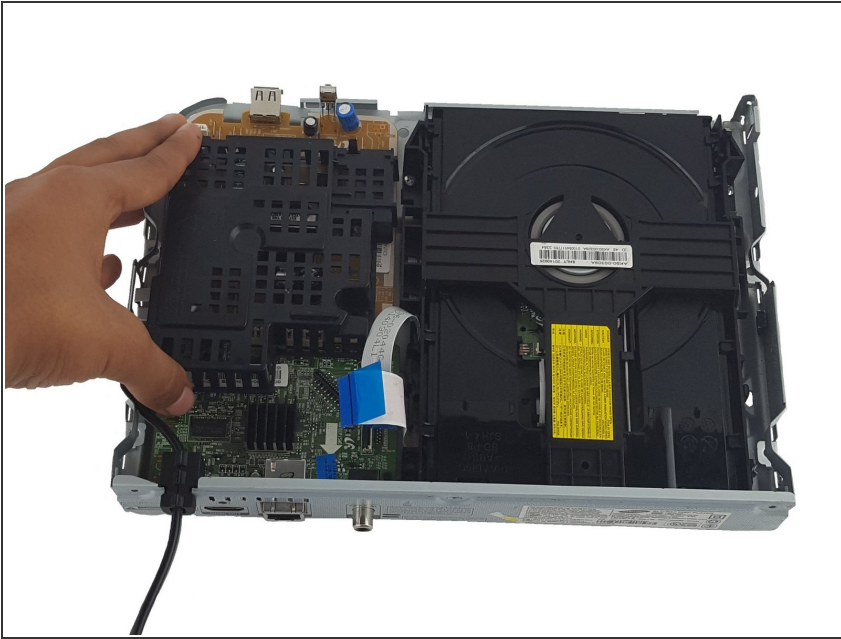
- Pull the ribbons gently from one corner by the blue tabs to remove it.

Step 4



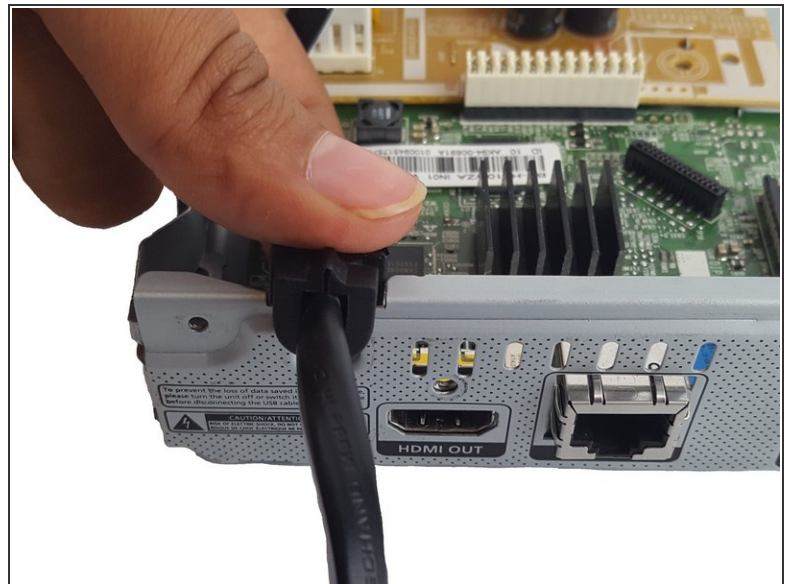
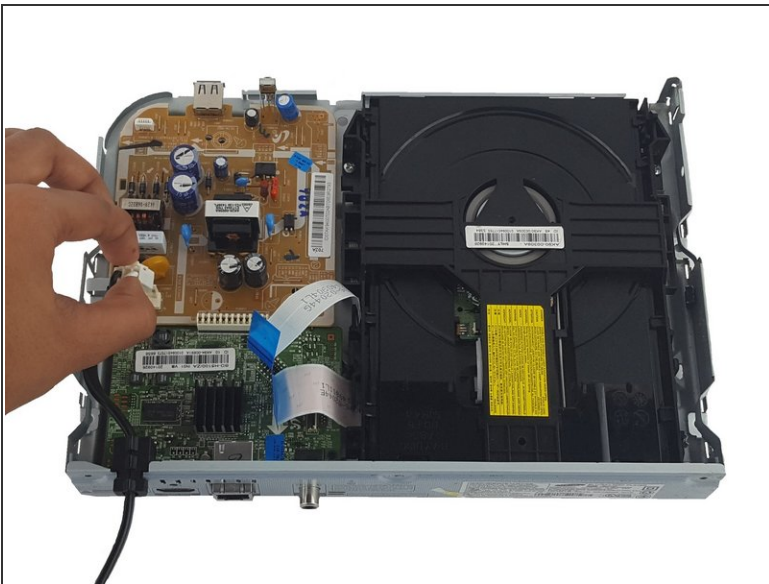
- Use a Phillips Head #2 to remove the two 7.5mm screws on the black cover.

Step 5



- Remove the black cover.

Step 6



- Pinch the white clip and pull straight up on the power cord.
- Remove power cord.

To reassemble your device, follow these instructions in reverse order.