



# Samsung BlackJack II Antenna Replacement

Install the antenna inside of your phone.

Written By: Ryan Rumsey



---

## INTRODUCTION

Use this guide to install, remove, or replace the phone's antenna.

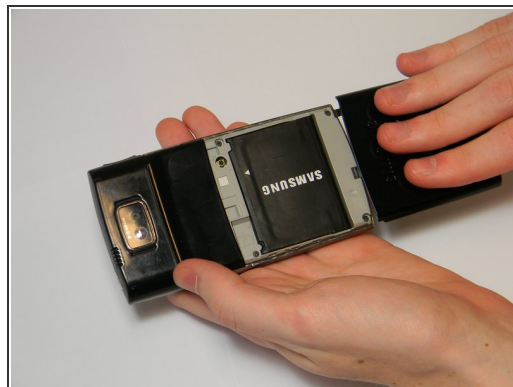
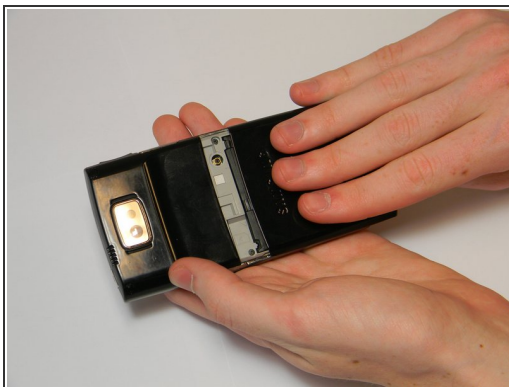
---



### TOOLS:

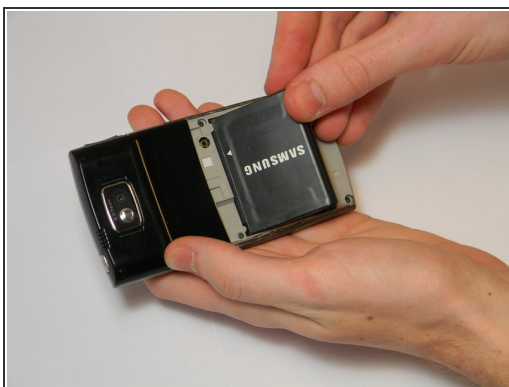
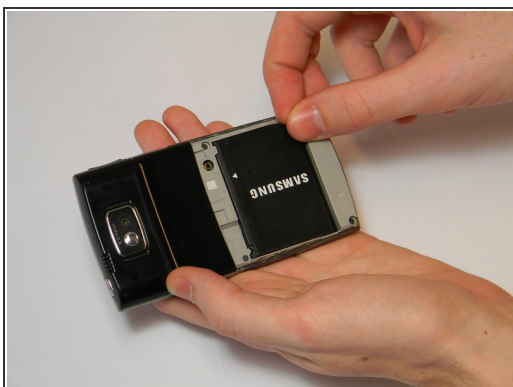
- [Phillips #00 Screwdriver](#) (1)
  - [iFixit Opening Tools](#) (1)
  - [Spudger](#) (1)
-

## Step 1 — Battery



- Apply downward pressure to the top of the battery panel while pulling down to slide it off the phone.

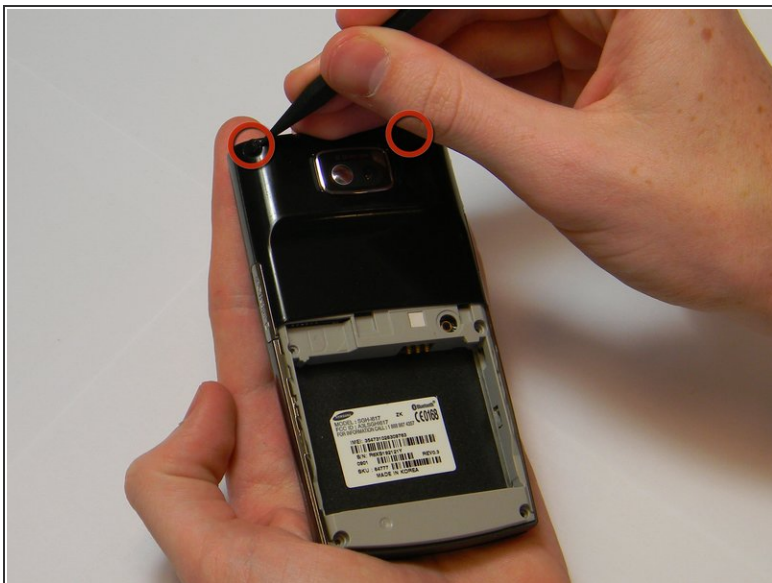
## Step 2



- Locate the grooves on the sides of the battery near the bottom of the phone. Use your fingers to pull the battery up and out of the phone.

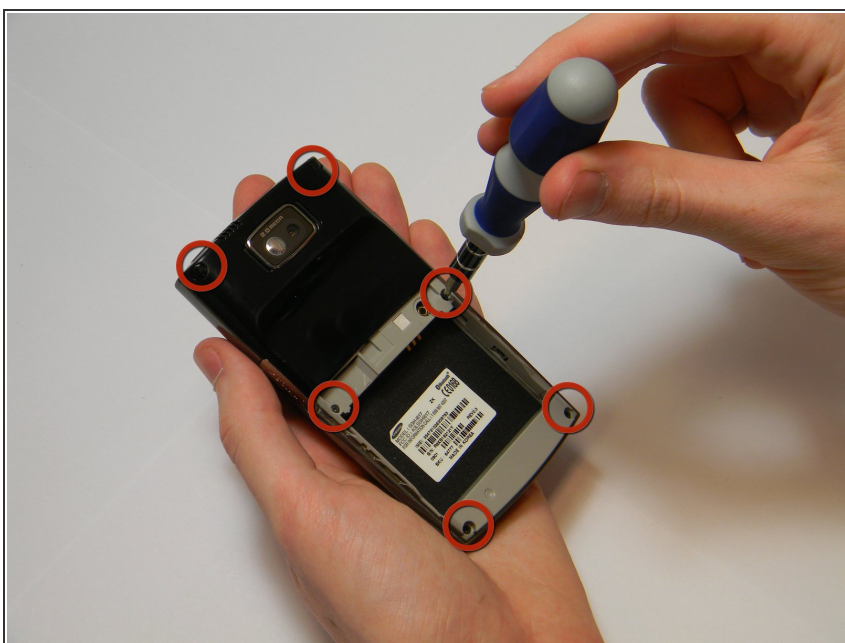


### Step 3 — Back Casing



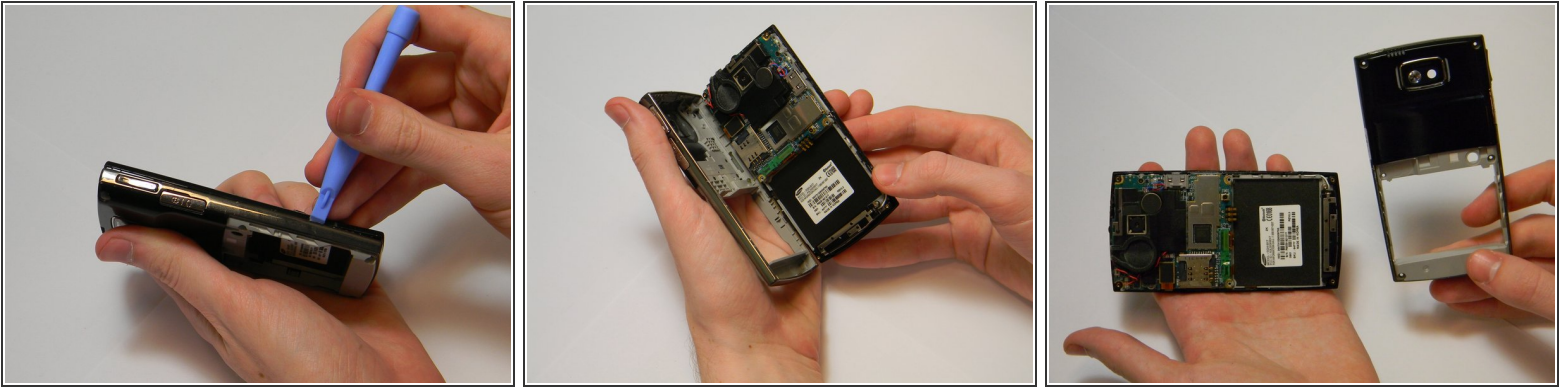
- Use the spudger to pry the two plastic caps out of the top corners of the phone casing.
- ⓘ To get a better grip, you may use the tweezers to finish pulling the plastic caps from the phone.

### Step 4



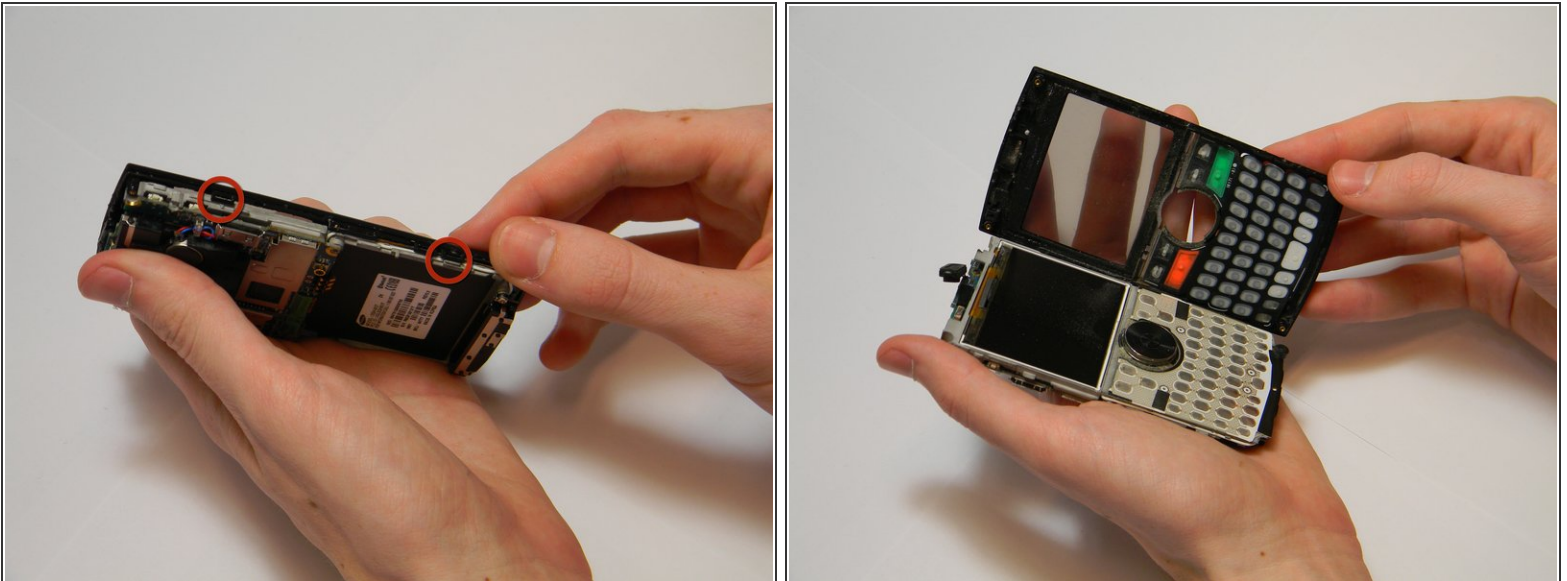
- Remove the six 4.0 mm screws using the Phillips 00 screwdriver.

## Step 5



- Insert the plastic opening tool in the gap between the back panel and rest of the body.
- Slide the tool along the edges until the two pieces come apart.
- ⓘ The circuit board is attached to the front casing. Both casings should separate without having to sever electrical connections.

## Step 6 — Front Casing



- Pry apart the plastic tabs along the edges of the phone.
- Separate the front panel from the main body of the phone using your fingers.



## Step 7 — Antenna



- Remove the two 4.0 mm screws, one silver and one black, from both ends of the antenna using the Phillips 00 screwdriver.

## Step 8



- To remove the antenna, disconnect the white antenna cable that connects it to the main circuit board.

To reassemble your device, follow these instructions in reverse order.