



# Samsung Brightside Logic board Replacement

Relatively straight forward task, no surprises and fairly simple.

Written By: oldturkey03



## INTRODUCTION

I noticed that there was not to much information about working on this phone. I received one in a non-working condition and figured it would be a good chance for some guides. The phone is easy to work on and no hidden screws or clips, no excessive glue. A straight forward no nonsense phone.



### TOOLS:

- [Phillips #000 Screwdriver](#) (1)
  - [iFixit Opening Tools](#) (1)
-

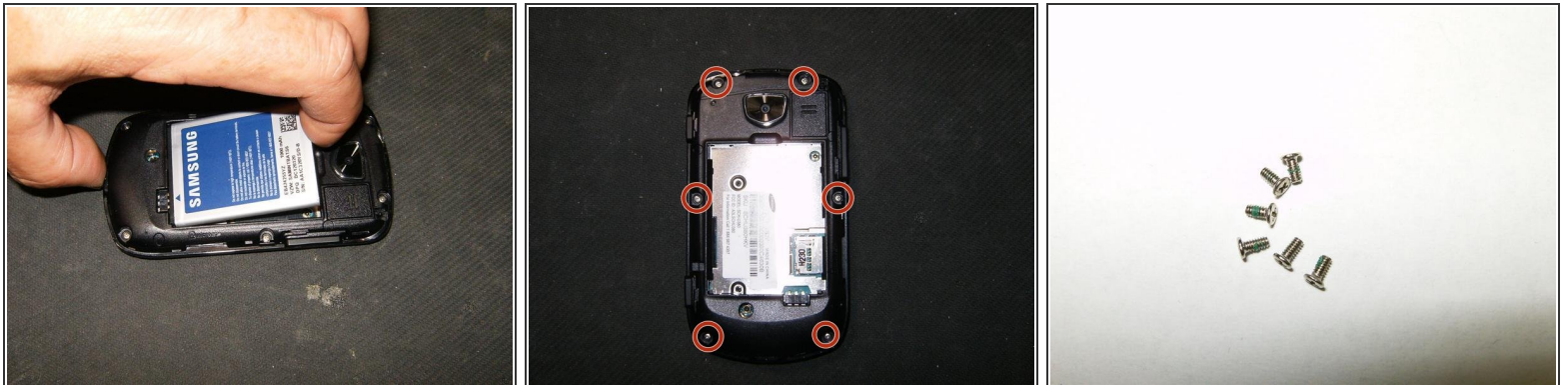


## Step 1 — Logic board



- Here is the Samsung SCH-U380 Brightside
- Turn it over to gain access to the battery.
- Remove the backcover by simply pulling it off the phone from the top down

## Step 2



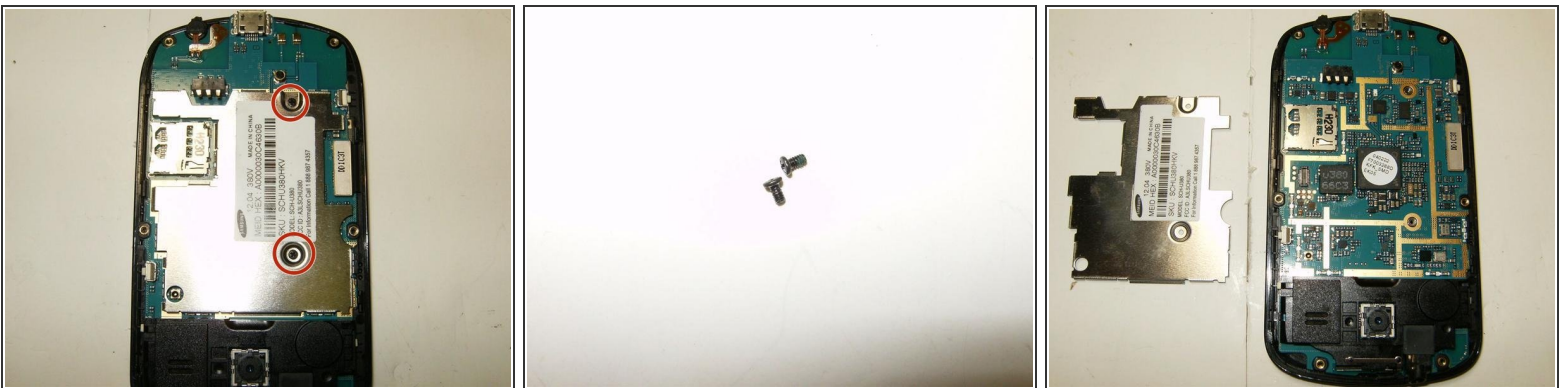
- Remove the battery
- Remove the six Phillips screws from the back frame
- All six screws are identical M1.5X3

### Step 3



- Use a plastic opening tool or similar tool to separate the top from the bottom frame. Applying slight pressure in a downwards direction will disengage the plastic clips
- Continue to slide the tool along the slot until you feel the plastic locks disengage
- Once all locks have released, the bottom frame can simply be removed.

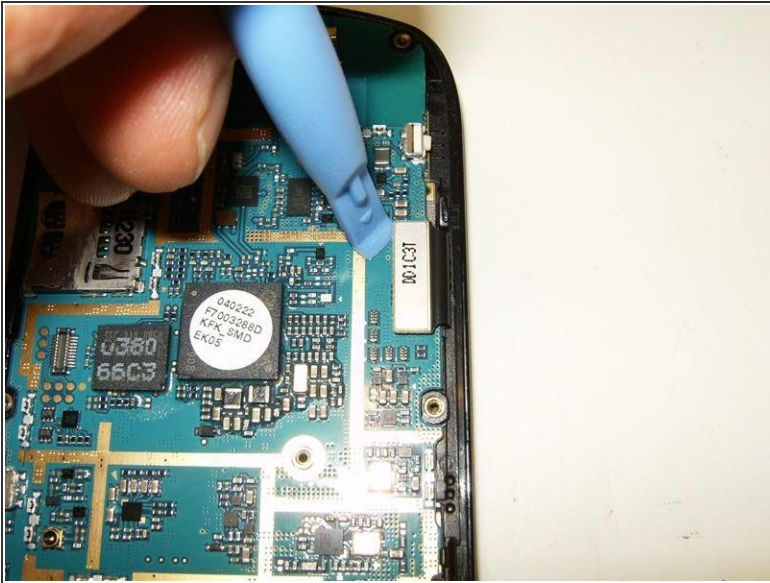
### Step 4



- Remove the two Phillips screws from the EMI shield.
- Both screws are identical M1.5X2
- Remove the EMI shield



## Step 5



- Detach the LCD connector.
- Remove the logic board

To reassemble your device, follow these instructions in reverse order.