



Samsung CLP-300 Black Toner Transfer Unit Replacement

This guide will help you replace the Toner Transfer Unit on your Samsung CLP-300.

Written By: Heather Howard



INTRODUCTION

Follow these steps if you are experiencing uneven print quality or lines in your printed documents.



TOOLS:

- [Phillips #1 Screwdriver](#) (1)
 - [Phillips #2 Screwdriver](#) (1)
 - [iFixit Opening Tools](#) (1)
 - [Spudger](#) (1)
-

Step 1 — Black Toner Transfer Unit



- Turn the printer off and wait a few minutes for it to cool.

Step 2



- Pull paper tray out and set aside.

Step 3



- Open the front cover.

Step 4



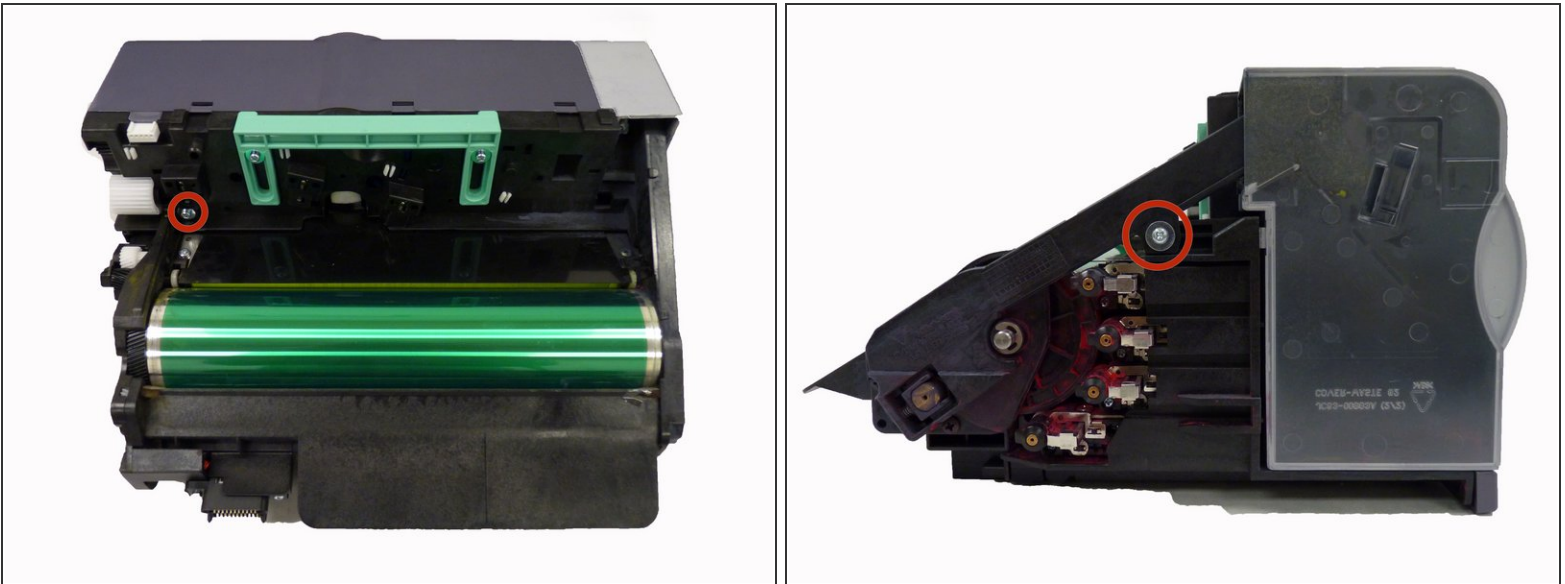
- Pull the waste toner container out of the printer using the handle.
- ⓘ Make sure to keep waste toner container upright to avoid spillage.

Step 5



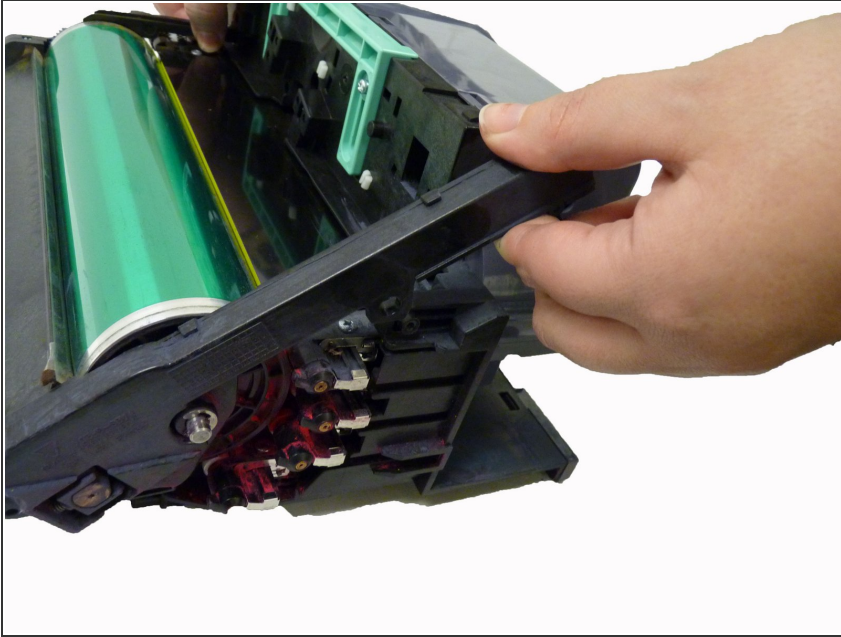
- Pull the imaging unit out of the printer using bottom handle.
- Use green handle on top of imaging unit to steady unit as you pull it out.
- ⓘ At this point you can set the printer aside as you will only need the imaging unit to continue repair.

Step 6



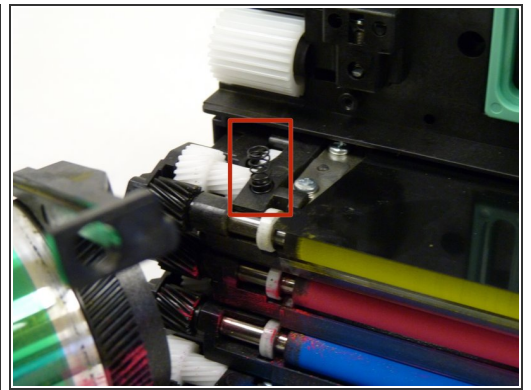
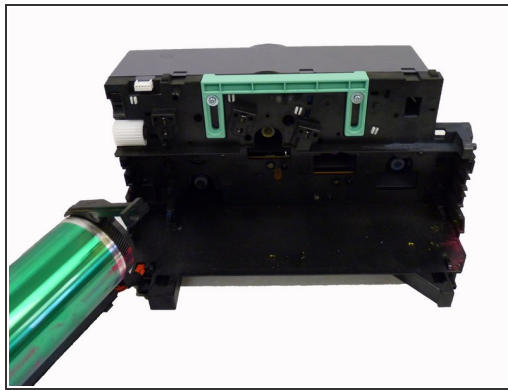
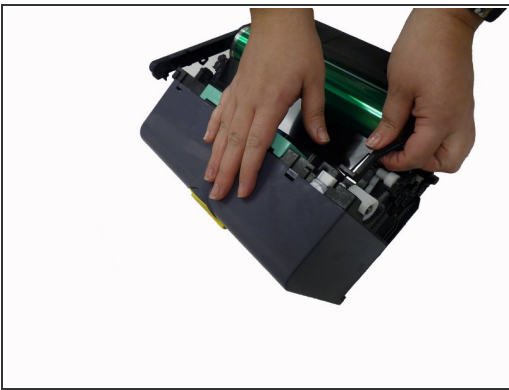
- Remove these two screws.
- ⚠ Do not expose imaging unit to light for more than a few minutes. Covering unit with a piece of paper is sufficient protection while you complete repair.

Step 7



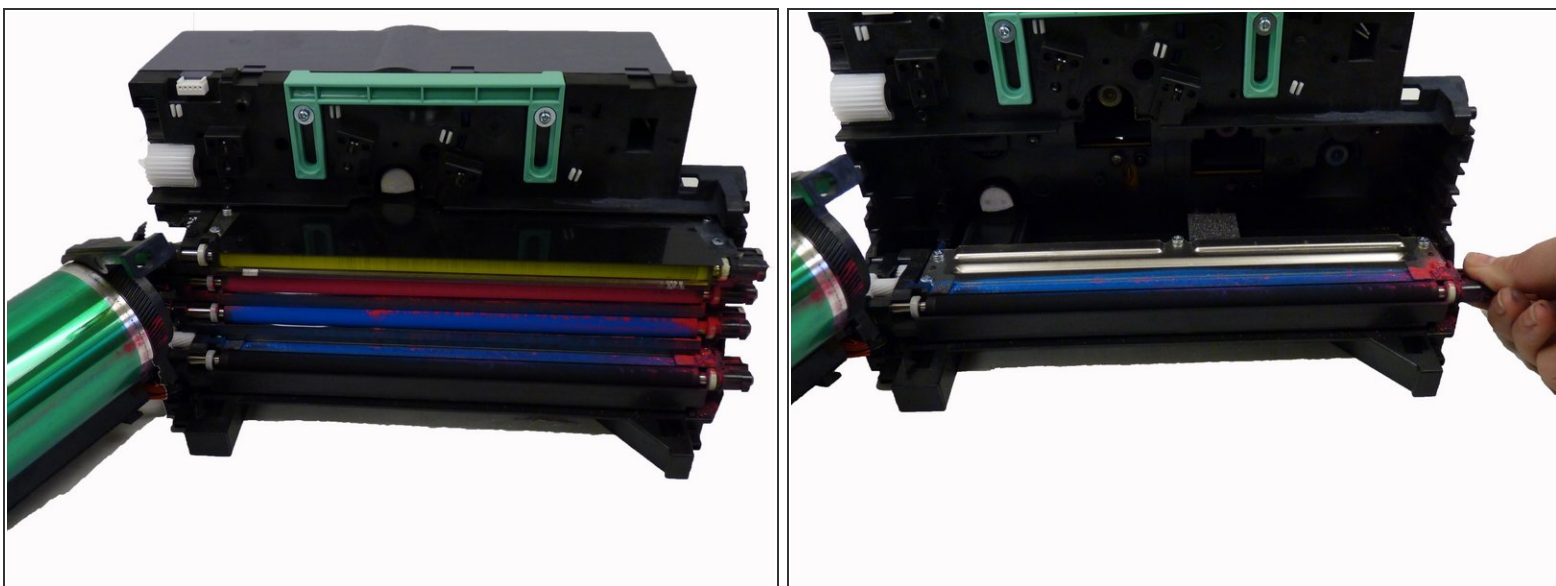
- Carefully pry plastic arm away from main unit.

Step 8



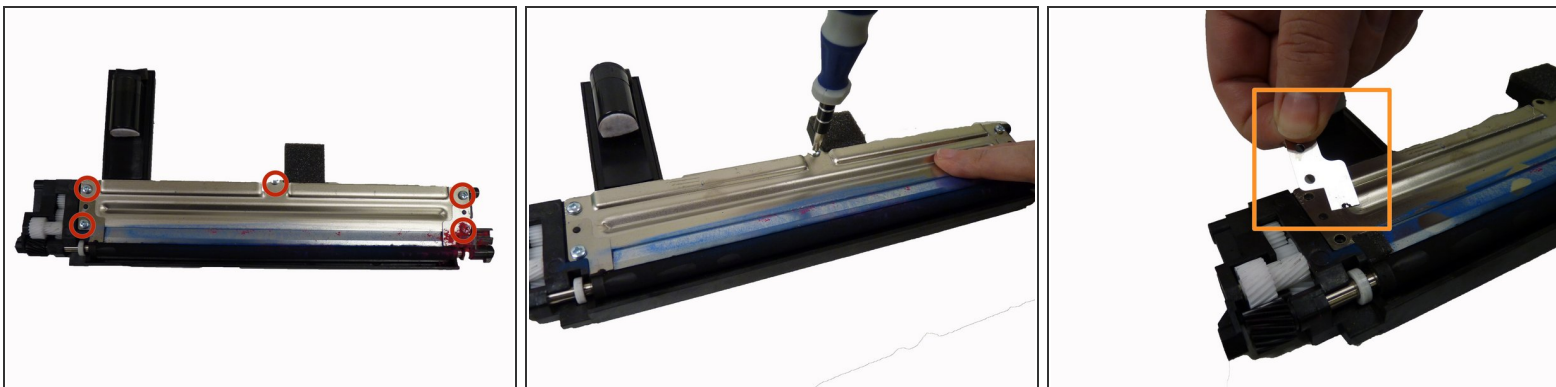
- Carefully pry plastic from screw base so that the entire organic photo conductor piece slides open to the left.
- ⓘ When removing the organic photo conductor take care to not lose the small spring on the back left.
- ⚠ At this point you may want to put on plastic gloves to keep from staining hands with printer ink.

Step 9



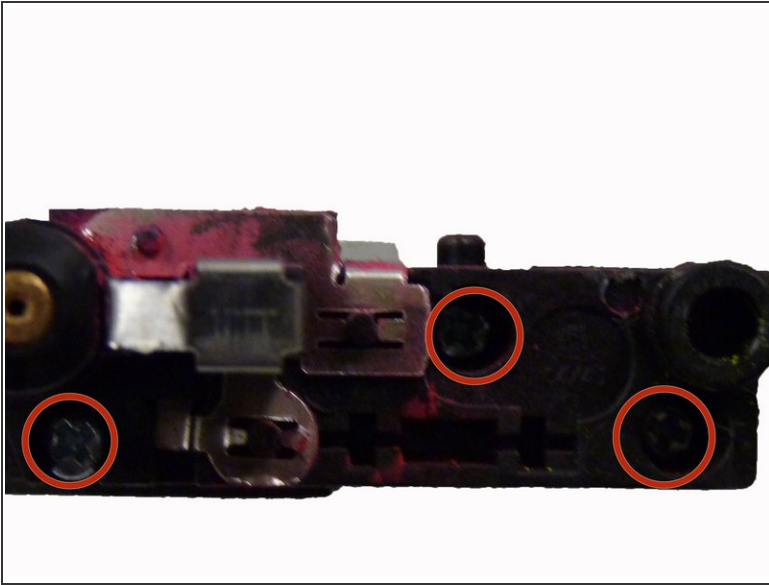
- Slide each toner transfer unit out separately, placing all aside except for the black toner transfer unit.
- ⓘ Keep toner rollers level to avoid toner spillage.

Step 10



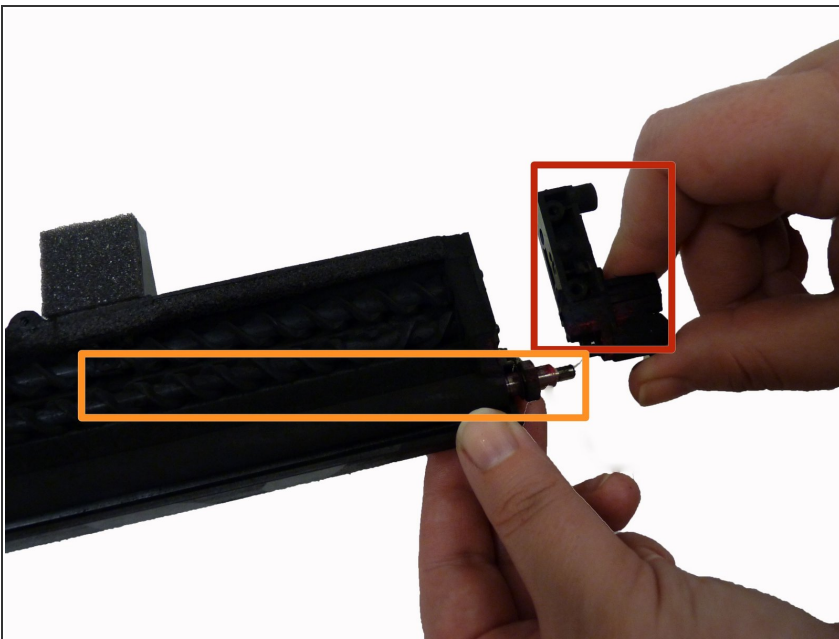
- Remove these five screws from the top of the black toner transfer unit.
- Remove main and smaller z-shaped plates.

Step 11



- Remove these three screws from the right end of the toner transfer unit.

Step 12



- Remove plastic end piece.
- Gently pull out black toner roller.
- Insert new roller in place of old roller turning slightly to fit.
- ⓘ Be careful not to pinch small foam square when inserting new roller.
- Cover new roller with toner by rotating roller by hand.

To reassemble your device, follow these instructions in reverse order.