



Samsung Camera LCD Replacement

Replacement of the LCD tablecloth on a Samsung SMX 30F

Written By: Hardy



INTRODUCTION

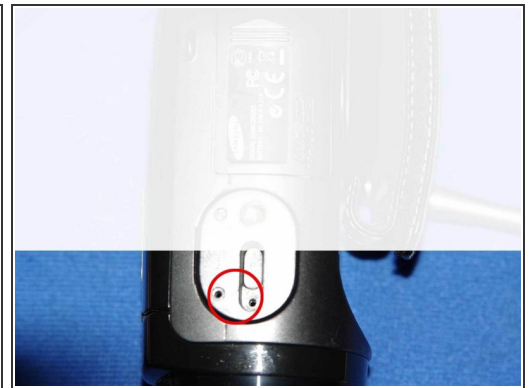
Change of the LCD tablecloth

Step 1 — Pin your LCD



- How to replace the LCD ribbon cable on a Samsung SMX 30F. This ribbon connects the LCD to the motherboard of the camera. For a change of LCD only the process is much simpler and only takes about ten minutes.

Step 2



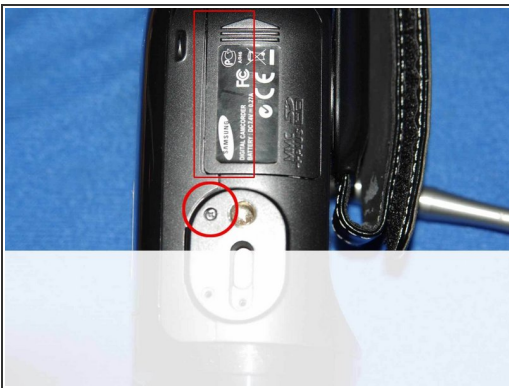
- Step 1: Remove the front block.
- Remove all the screws on the front of the camera

Step 3



- Then gently pull on the block, be careful it is connected to the camera by rather short cables.

Step 4



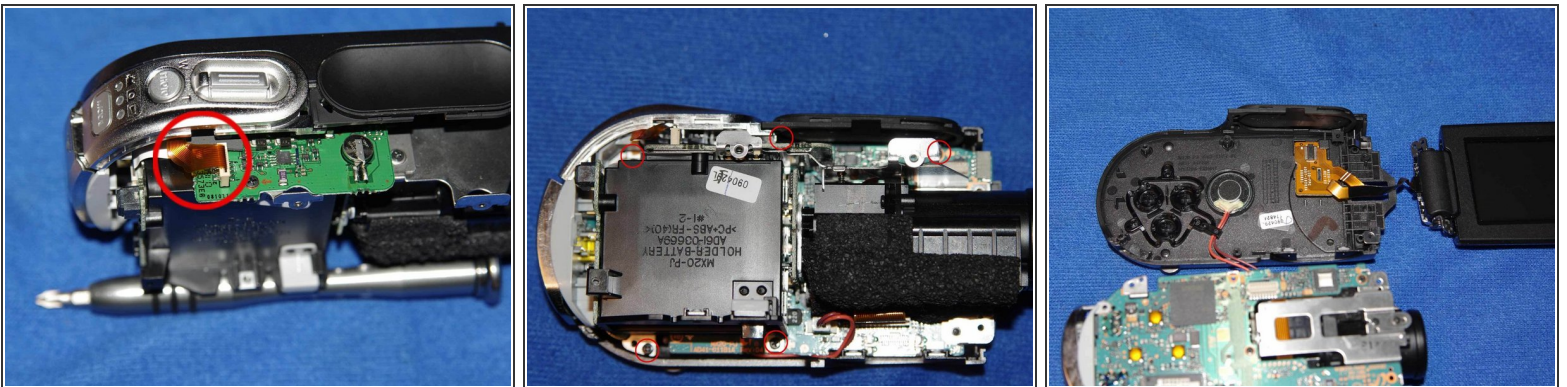
- Remove all screws by walking around the unit. Be careful some are hidden under the handle, behind the hatches

Step 5



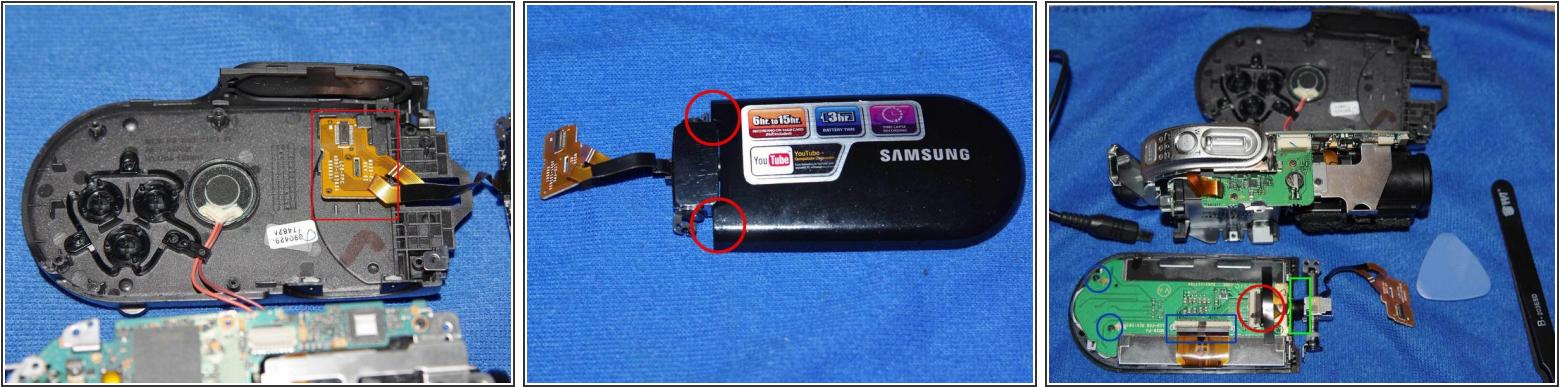
- To finish, remove the two screws connecting the screen to the body of the camera.
- Now you can remove the shell of the camera, it must come easily if you feel resistance is that you left a screw somewhere.

Step 6



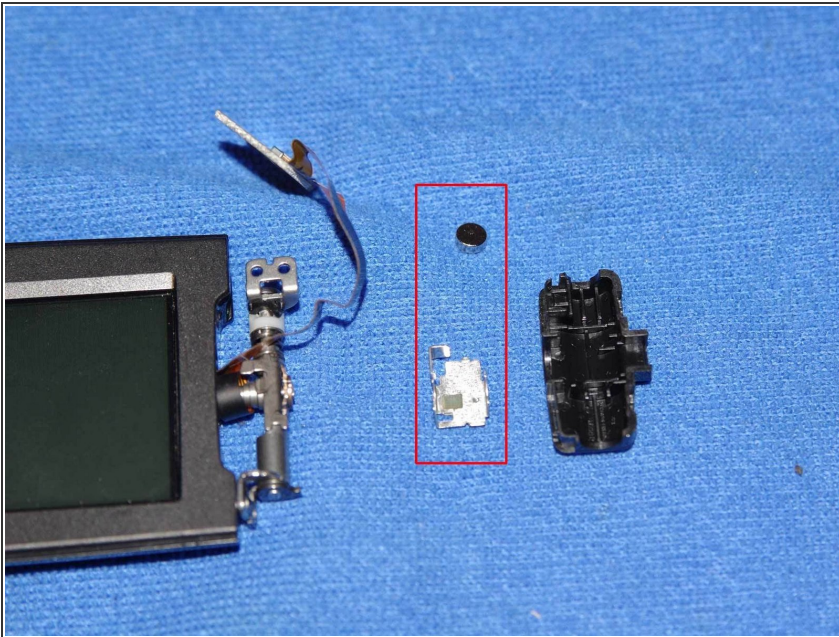
- Remove the case carefully, the cable disconnects easily from the very fragile connector.
- You can now remove the screws securing the motherboard to the frame.
- Then carefully remove the motherboard to gain access to the LCD cable.

Step 7



- Remove the cable from the frame.
- Unscrew the 4 screen screws. and open it delicately using a pick.
- Now, you can change the cable . The cable wraps around the metal axis, so make sure you count the number of rounds on disassembly to facilitate reassembly.

Step 8



- When reassembling, first position the metal clip and the small magnet in the black housing, before putting it back on the metal shaft.

TO REASSEMBLE YOUR DEVICE FOLOW THESE INSTRUCTIONS IN REVERSE ORDER.