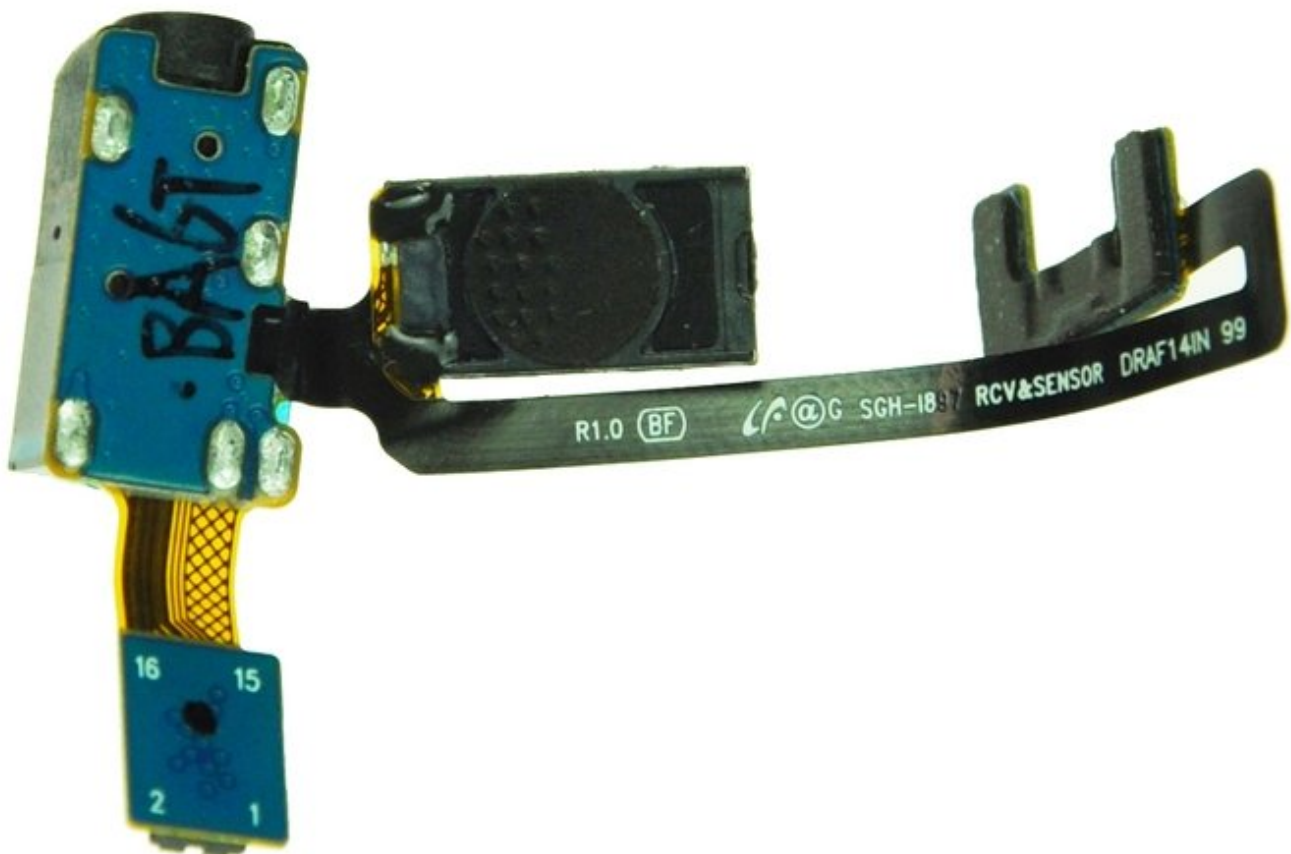




# Samsung Captivate Earpiece Replacement

This guide will instruct you on how to replace the Samsung Captivate's earpiece.

Written By: Drew Bentz



## INTRODUCTION

Sometimes the earpiece can become damaged or loose and needs to be replaced. Follow this guide to fix this problem.



### TOOLS:

- [Phillips #00 Screwdriver](#) (1)
  - [Phillips #000 Screwdriver](#) (1)
  - [Spudger](#) (1)
-

## Step 1 — Battery



- Remove the back cover by pressing on the bottom section of the phone and sliding the bottom piece downward.
- Lift up the back cover.

## Step 2



- Place your finger on the bottom of the battery and lift to remove.

### Step 3



- Replace the old battery with the new one.

### Step 4 — Rear Case



- Insert the spudger underneath the bottom section of the phone.
- Gently lift and push the spudger to slide the bottom section down to reveal two hidden screws.

## Step 5



- Remove the six 4.5mm #000 Phillips screws.

## Step 6



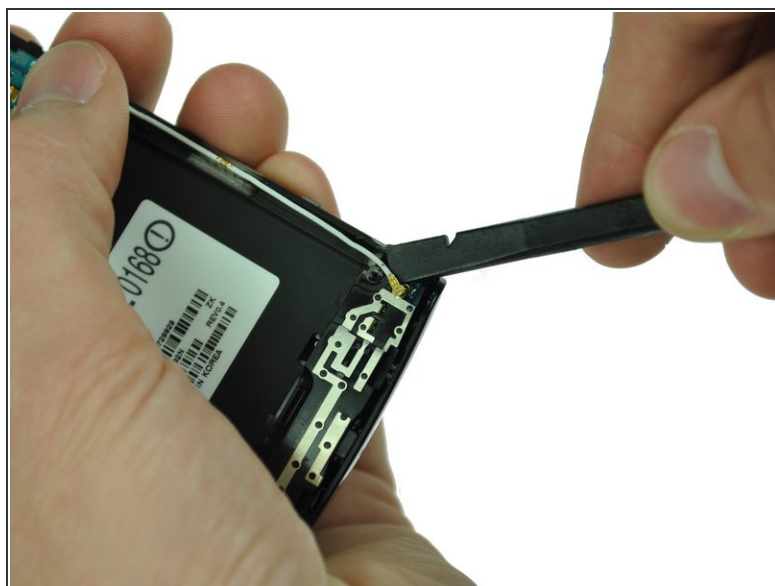
- Starting at a bottom corner, use the spudger to separate the rear case from the front display.
  - Move the spudger towards the top on both sides. The plastic opening tool is easier to use for this step.
- ⚠ Be careful when detaching the top. Free each side, stopping short of the center of the cover. Apply backward pressure on both corners with a finger applying pressure on the center, and slide the whole back cover toward the bottom of the device. Note: forcing the cover can result in cracked plastic.

## Step 7



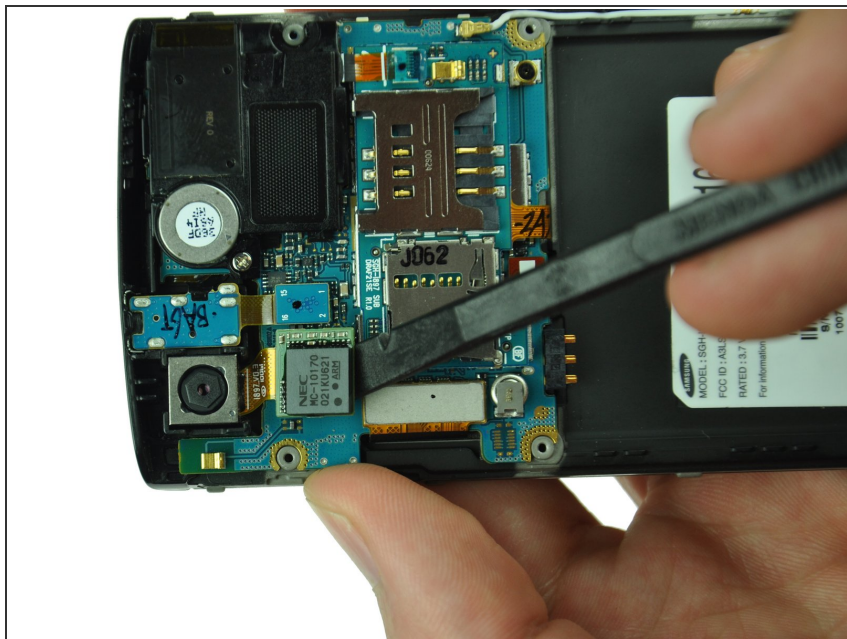
- Separate the rear case from the phone.

## Step 8 — Antenna Cable



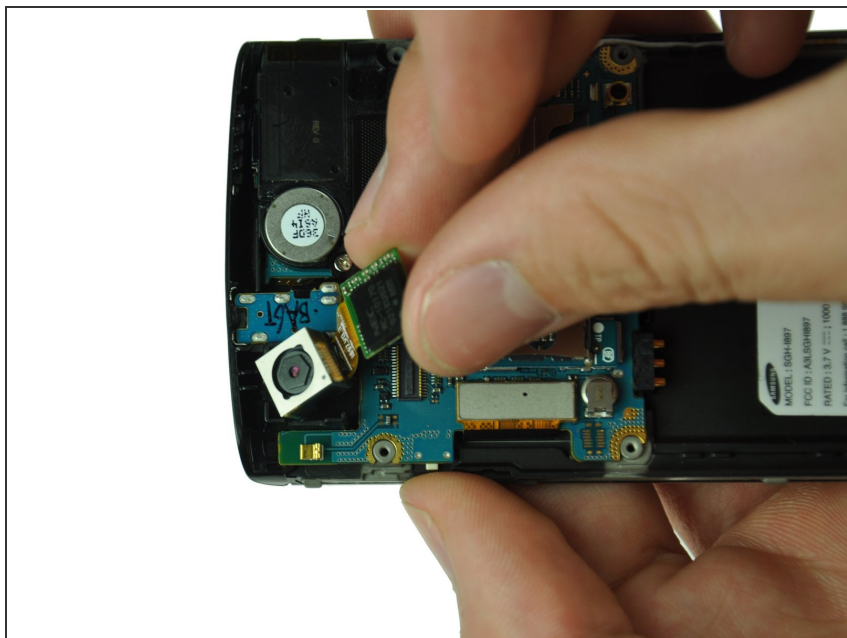
- Use a spudger tool to pry up the antenna cable from the connector on the motherboard.
- Pry up the other end of the cable from the connector on the antenna array.

## Step 9 — Camera Assembly



- Use the spudger tool to pry up the chip labeled "NEC." This releases the chip.

## Step 10



- Gently lift the camera assembly out of the plastic housing.

## Step 11 — Motherboard



- Use a spudger to disconnect the three highlighted connectors.
- Pry straight up and be careful to pry against the connector, not the socket on the motherboard itself.

## Step 12



- Use your fingers to lift up the logic board from the assembly.

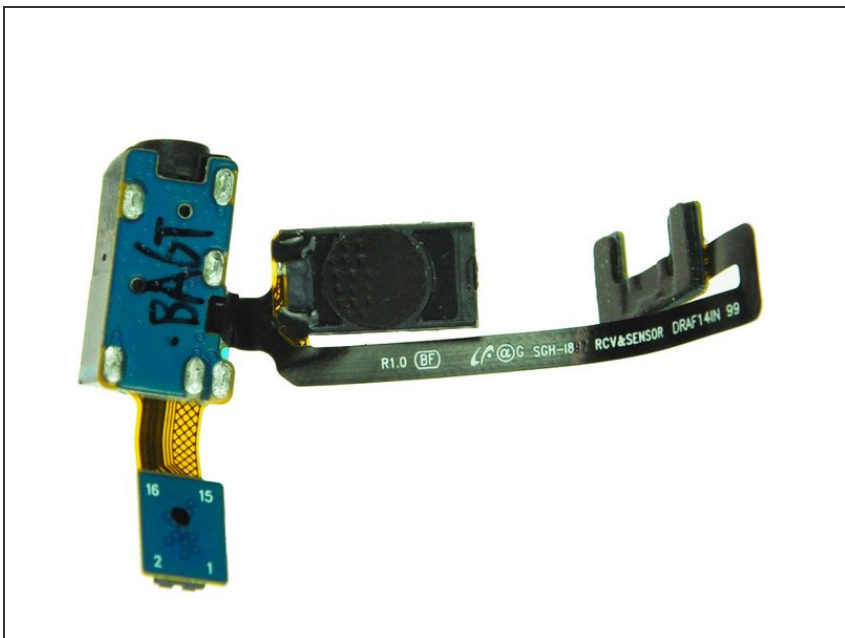
## Step 13 — 3.5mm Headphone Jack



- Gently pull up on the audio jack, taking the attached ribbon cable with it.

⚠ There is a small amount of glue holding the ribbon cable that attaches the audio jack to the earpiece.

## Step 14 — Earpiece



- The earpiece is attached to the 3.5mm audio jack. You will need to replace the entire assembly.

To reassemble your device, follow these instructions in reverse order.