



Samsung Captivate Glide Motherboard Replacement

A guide on how to remove the motherboard of a Samsung Captivate Glide.

Written By: Nicholas Mira



INTRODUCTION

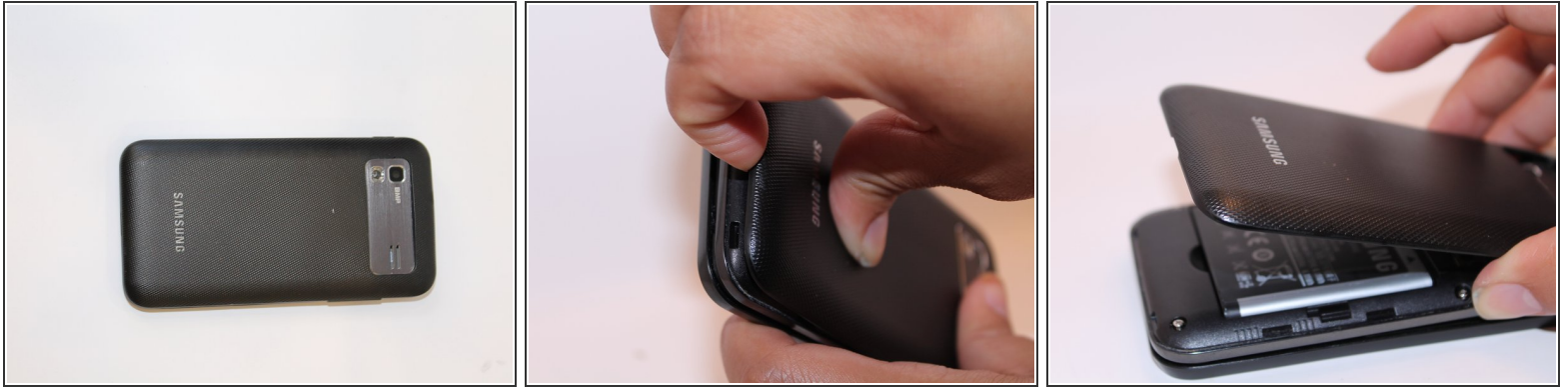
How to remove the motherboard of a Samsung Captivate Glide.



TOOLS:

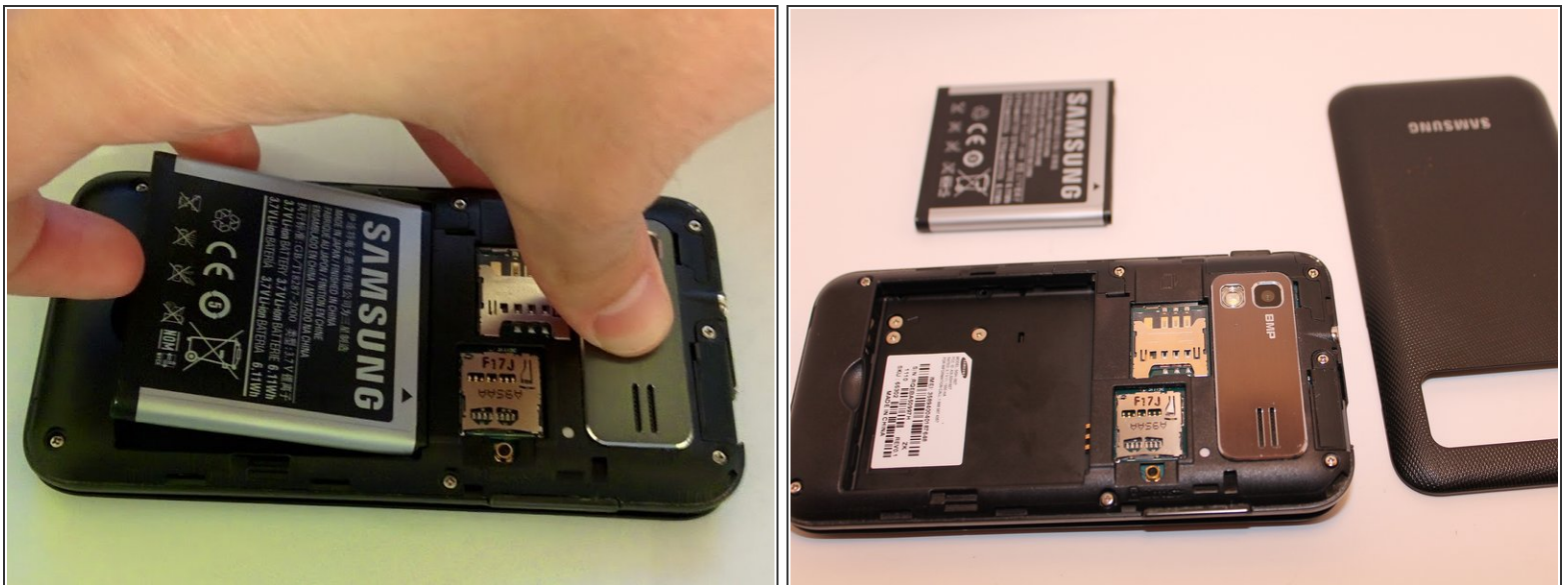
- [iFixit Opening Tools](#) (1)
 - [Phillips #00 Screwdriver](#) (1)
 - [Tweezers](#) (1)
-

Step 1 — Motherboard



- Remove back cover using fingernail or plastic opening tool. The cover pulls up and off.

Step 2



- Remove battery with plastic opening tool or finger.

Step 3



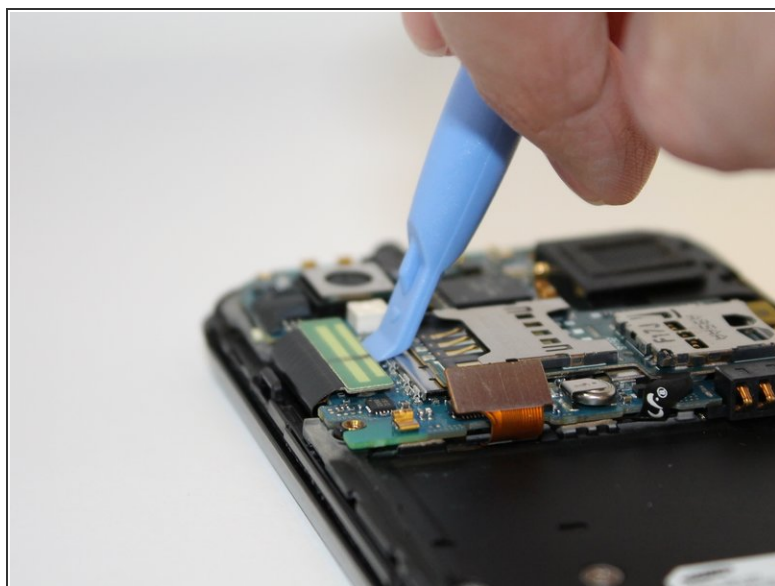
- Remove the seven screws from backplate using the #00 screwdriver.

Step 4



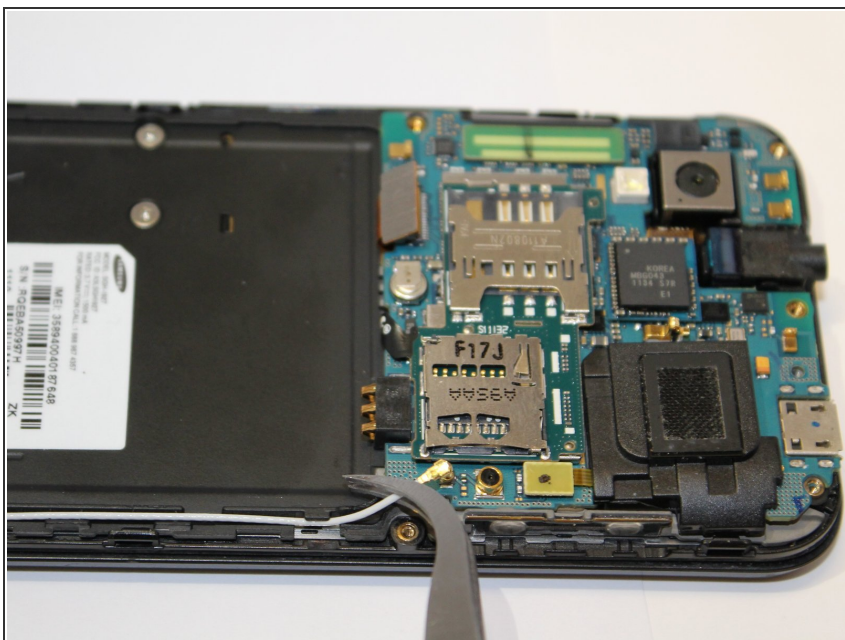
- Remove the back plate using the plastic opening tool.
- There is a lip on each side, and both must be pried up.
- ⓘ You can work your way around the edges after prying the two sides.

Step 5



- Use the plastic opening tool to detach the two tabs connecting the motherboard to the base of the phone.

Step 6



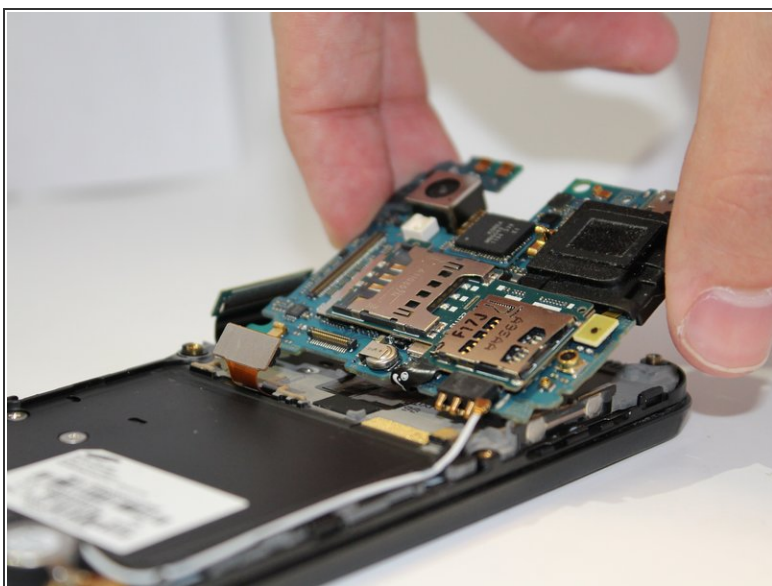
- Disconnect the antenna cable from the motherboard using tweezers.

Step 7



- Remove the single screw connecting the motherboard to the base of the phone by using the #00 Phillips screwdriver.

Step 8



- Lift the motherboard out of the base of the phone.

To reassemble your device, follow these instructions in reverse order.