



# Samsung Captivate Motherboard Replacement

Replace a dead motherboard in your Captivate.

Written By: Christopher



---

## INTRODUCTION

Use this guide to replace your Captivate's motherboard.



### TOOLS:

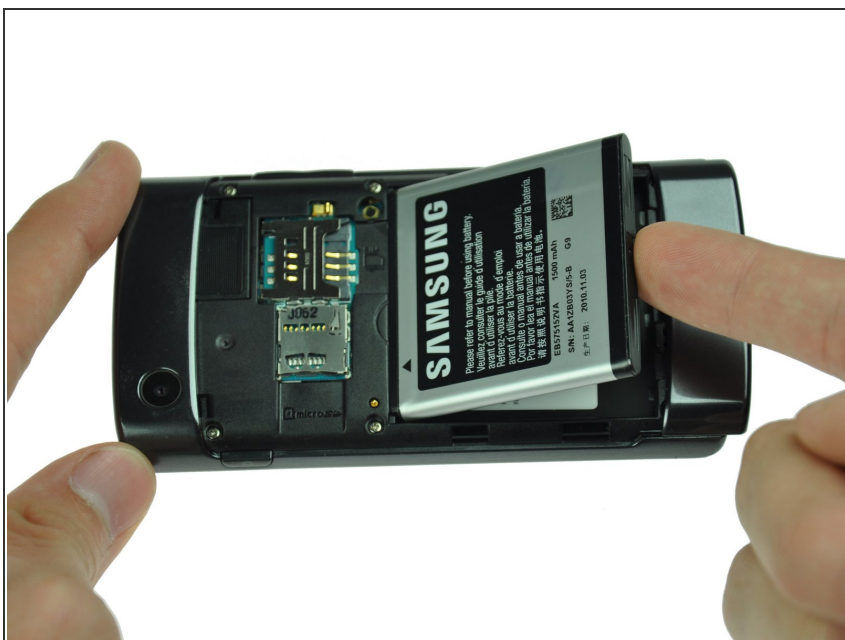
- [Phillips #00 Screwdriver](#) (1)
  - [Phillips #000 Screwdriver](#) (1)
  - [Spudger](#) (1)
-

## Step 1 — Battery



- Remove the back cover by pressing on the bottom section of the phone and sliding the bottom piece downward.
- Lift up the back cover.

## Step 2



- Place your finger on the bottom of the battery and lift to remove.

## Step 3



- Replace the old battery with the new one.

## Step 4 — Rear Case



- Insert the spudger underneath the bottom section of the phone.
- Gently lift and push the spudger to slide the bottom section down to reveal two hidden screws.



## Step 5



- Remove the six 4.5mm #000 Phillips screws.

## Step 6



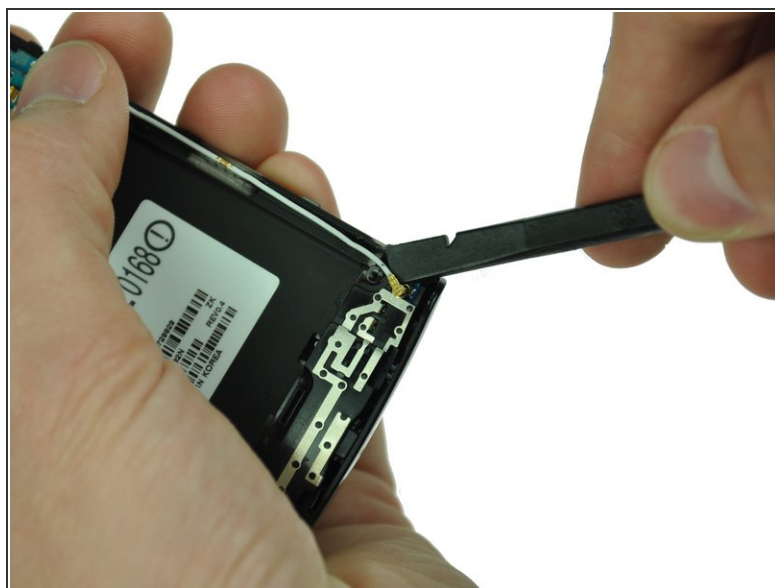
- Starting at a bottom corner, use the spudger to separate the rear case from the front display.
  - Move the spudger towards the top on both sides. The plastic opening tool is easier to use for this step.
- ⚠ Be careful when detaching the top. Free each side, stopping short of the center of the cover. Apply backward pressure on both corners with a finger applying pressure on the center, and slide the whole back cover toward the bottom of the device. Note: forcing the cover can result in cracked plastic.

## Step 7



- Separate the rear case from the phone.

## Step 8 — Antenna Cable



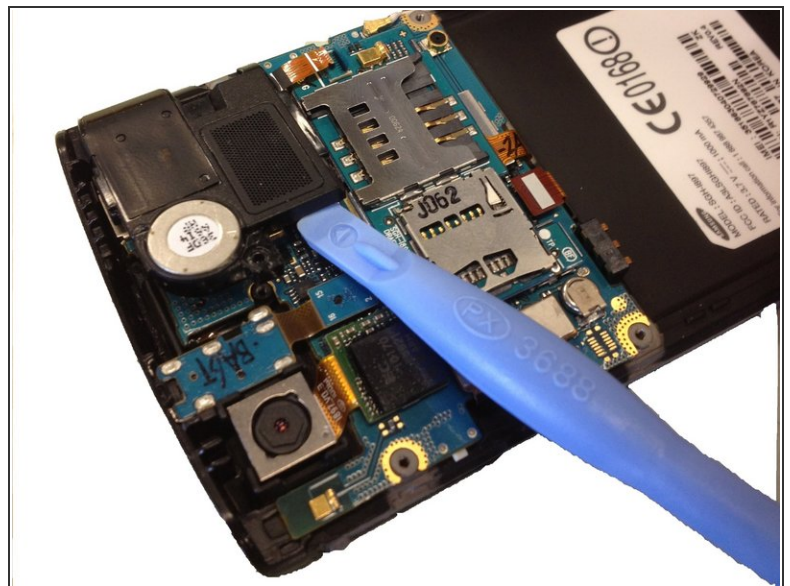
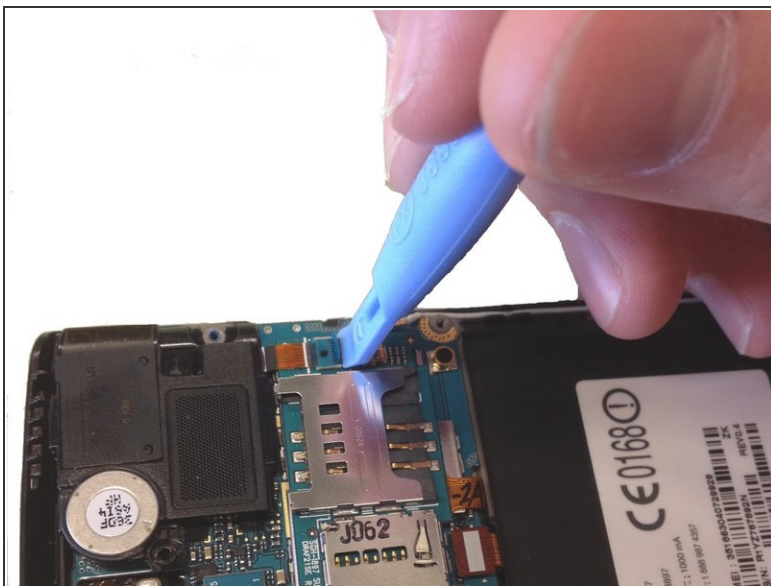
- Use a spudger tool to pry up the antenna cable from the connector on the motherboard.
- Pry up the other end of the cable from the connector on the antenna array.

## Step 9 — Speaker



- Use the Phillips 00 screwdriver to remove the single screw holding the speaker assembly to the LCD.

## Step 10



⚠ Use the plastic opening tool to lift the bottom tab of the plastic ribbon cable connector. Be careful not to use excessive force, you are only releasing the tab that holds the cable in.

- Pull out the ribbon cable.
- Use a spudger or plastic opening tool to lift up the speaker, and use your hands to remove it.

This document was generated on 2019-09-23 09:24:44 AM (MST).



## Step 11 — Camera Assembly



- Lift up the black NEC chip with attached ribbon cable using either a spudger or plastic opening tool.
- Gently lift the camera assembly out of the plastic housing.

## Step 12 — Motherboard



- Use a spudger to disconnect the three highlighted connectors.
- Pry straight up and be careful to pry against the connector, not the socket on the motherboard itself.



## Step 13



- Use your fingers to lift up the logic board from the assembly.

To reassemble your device, follow these instructions in reverse order.