



Samsung Captivate Speaker Replacement

This repair guide will show you how to replace the Samsung Captivate's speaker assembly.

Written By: Drew Bentz



INTRODUCTION

The speaker is easily damaged by playing music too loud. This part is easily replaced.



TOOLS:

- [Phillips #00 Screwdriver](#) (1)
 - [Phillips #000 Screwdriver](#) (1)
 - [Spudger](#) (1)
 - [iFixit Opening Tools](#) (1)
-

Step 1 — Battery



- Remove the back cover by pressing on the bottom section of the phone and sliding the bottom piece downward.
- Lift up the back cover.

Step 2



- Place your finger on the bottom of the battery and lift to remove.

Step 3



- Replace the old battery with the new one.

Step 4 — Rear Case



- Insert the spudger underneath the bottom section of the phone.
- Gently lift and push the spudger to slide the bottom section down to reveal two hidden screws.

Step 5



- Remove the six 4.5mm #000 Phillips screws.

Step 6



- Starting at a bottom corner, use the spudger to separate the rear case from the front display.
 - Move the spudger towards the top on both sides. The plastic opening tool is easier to use for this step.
- ⚠ Be careful when detaching the top. Free each side, stopping short of the center of the cover. Apply backward pressure on both corners with a finger applying pressure on the center, and slide the whole back cover toward the bottom of the device. Note: forcing the cover can result in cracked plastic.

Step 7



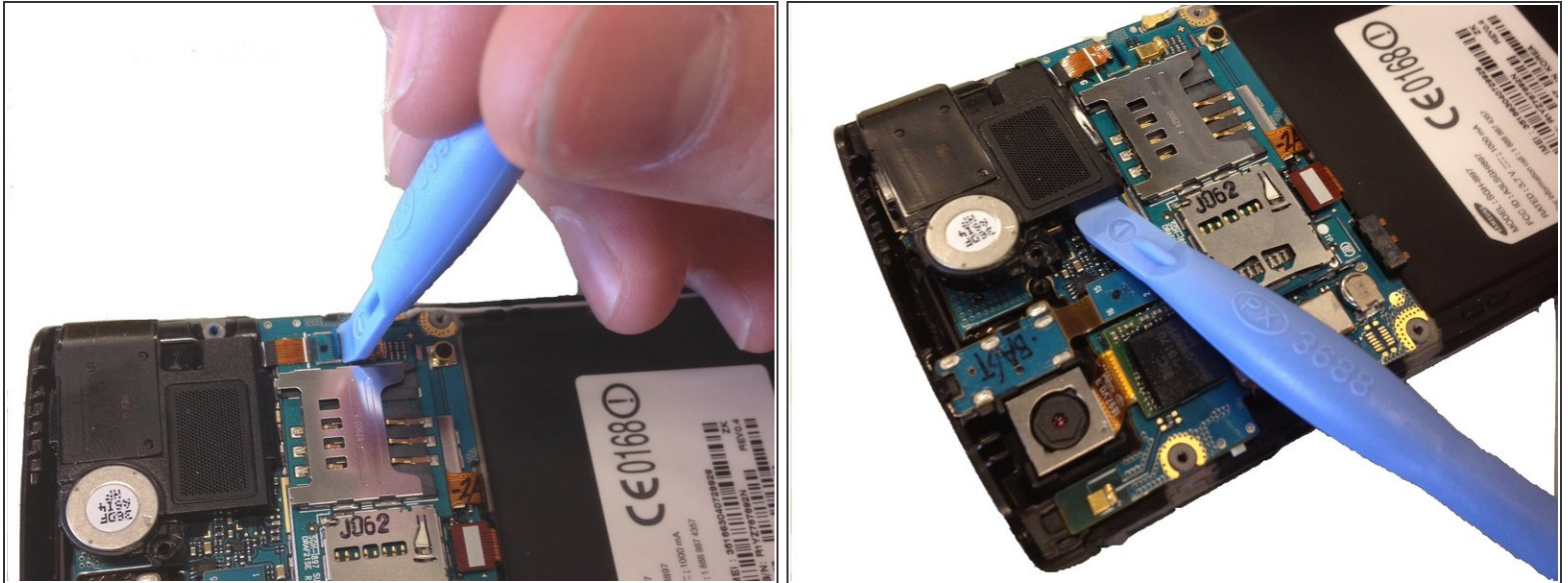
- Separate the rear case from the phone.


Step 8 — Speaker



- Use the Phillips 00 screwdriver to remove the single screw holding the speaker assembly to the LCD.

Step 9



 Use the plastic opening tool to lift the bottom tab of the plastic ribbon cable connector. Be careful not to use excessive force, you are only releasing the tab that holds the cable in.

- Pull out the ribbon cable.
- Use a spudger or plastic opening tool to lift up the speaker, and use your hands to remove it.

To reassemble your device, follow these instructions in reverse order.