



Samsung Chromebook 2 XE503c12

Daughterboard Replacement

This guide will show you how to replace the daughterboard on your Samsung Chromebook 2 XE503c12.

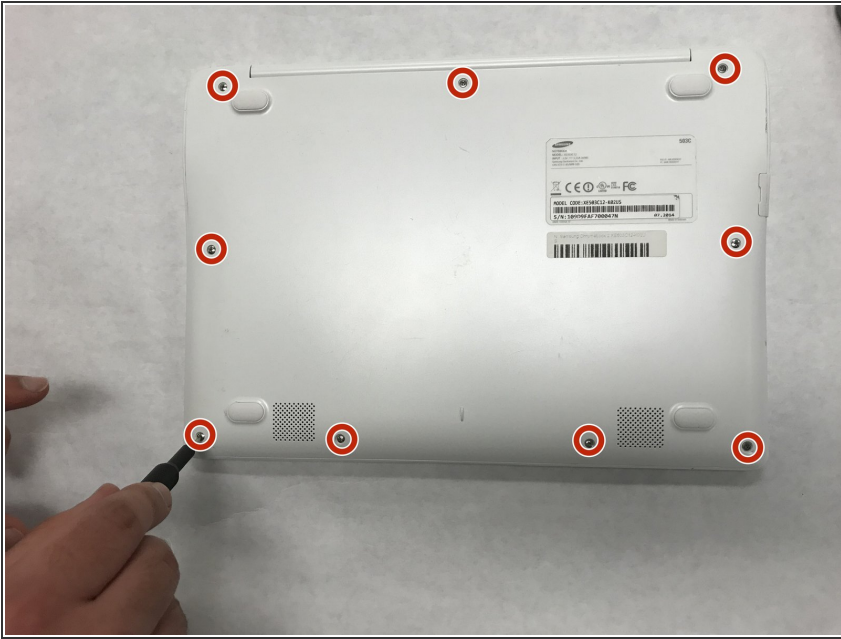
Written By: Nate Duvall



INTRODUCTION

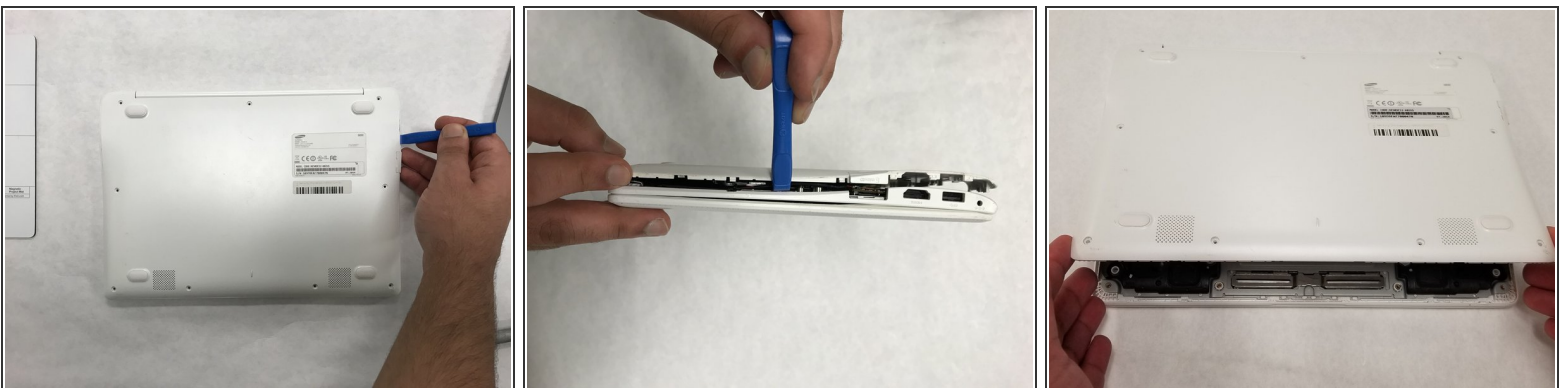
This guide will show you how to replace the daughterboard on your Samsung Chromebook 2 XE503c12. The daughterboard contains the righthand USB and auxillary/headphone ports, so should either of these stop to function, replacing the daughterboard should remedy the problem.

Step 1 — Daughterboard



- ⚠ Turn the power off before beginning this step
- ℹ It is common for Chromebooks to have rubber circle pads covering the four screws on each of the four corners. You can use any opening tool to remove the rubber circle pads.
- Lay the Chromebook down in a way that the bottom cover faces upward.
- Remove all nine screws from the back cover using a Phillips #00 screw.

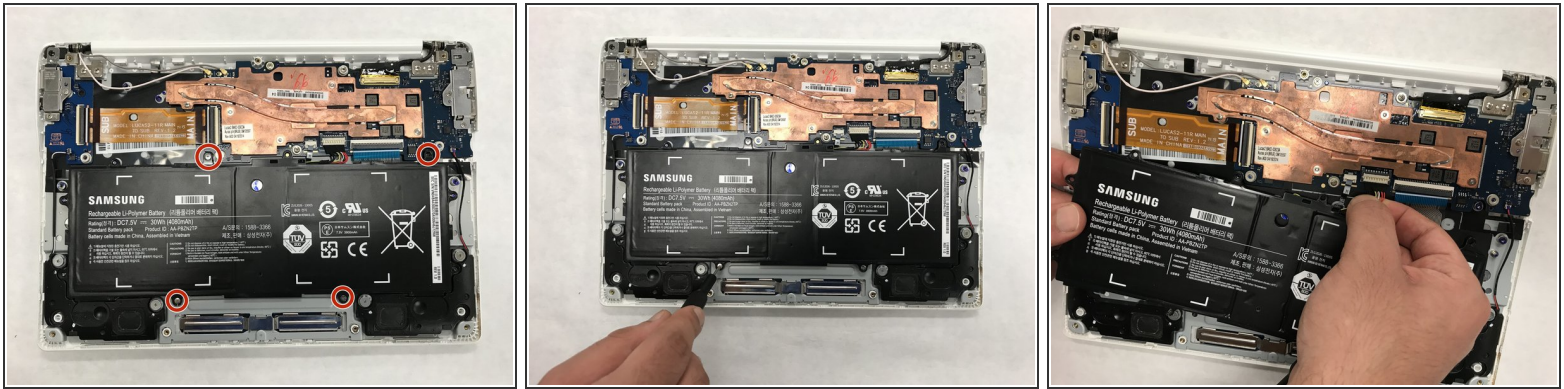
Step 2



- Place the opening tool in the divot between the spine of the Chromebook and the back cover.
- Slowly glide and push down the end of the opening tool along all sides of the Chromebook to detach the brackets. You will hear the brackets detach.

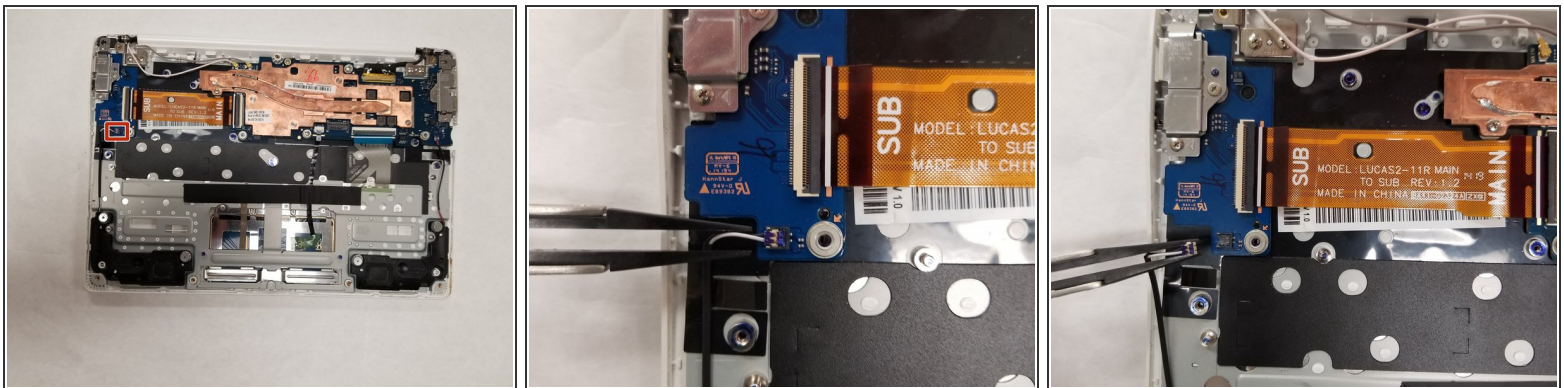
⚠ Be gentle while prying to avoid breaking the back cover.

Step 3



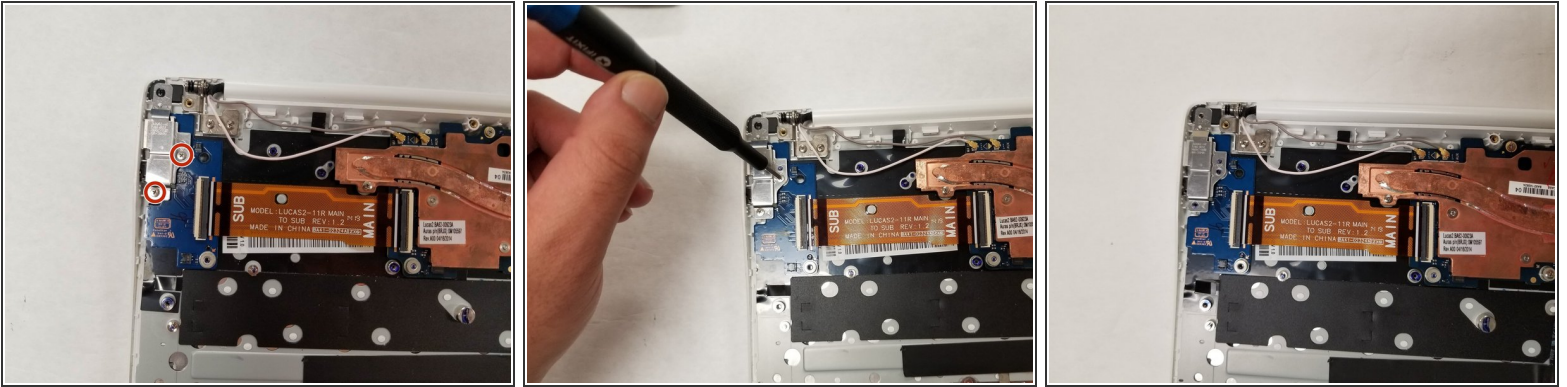
- Remove the four 3 mm screws using a Phillips #000 screwdriver.
- Carefully lift the top of the battery then pull it away from you to remove it.
- ⓘ Some batteries may be attached via a battery connector. Disconnect the battery connector by simply pulling straight up at its base.

Step 4



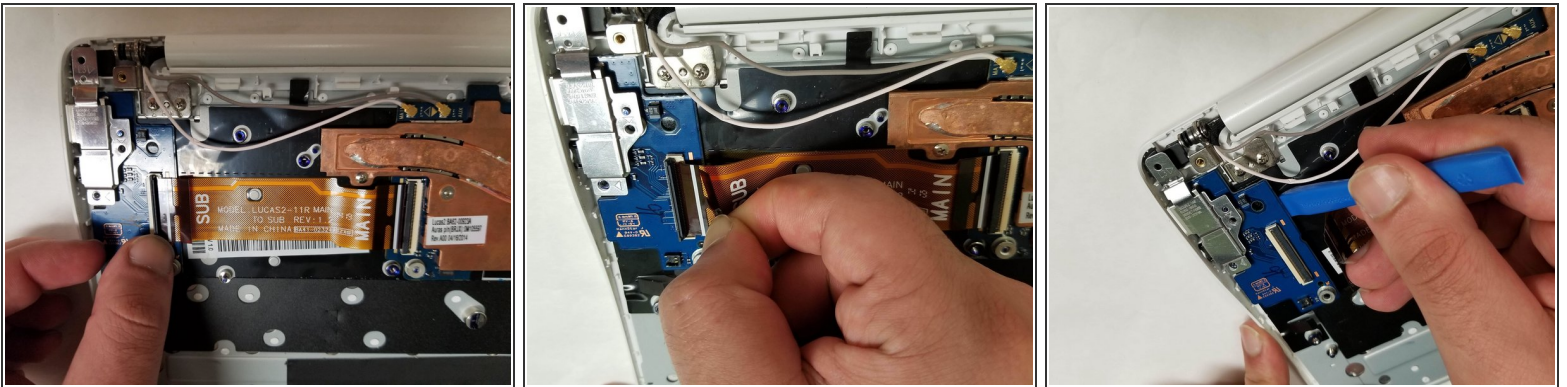
- Use a blunt precision tweezer to remove the speaker cord from the daughterboard.

Step 5



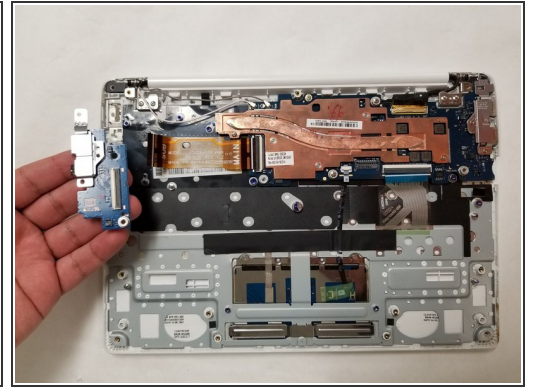
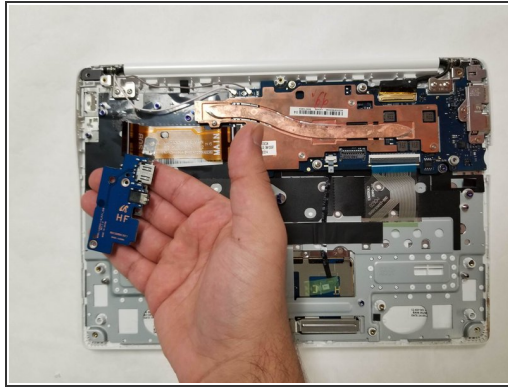
- Using a Phillips #00 screwdriver, remove all of the two screws from the daughterboard.

Step 6



- You must first lift the locking bar of the ZIF connector before removing the ribbon cable.
- Gently, remove the orange tape by pulling it outward.
- Using an opening tool, gently pull the daughterboard upward.

Step 7



- Gently pull the daughterboard away from the Chromebook.

⚠ Be gentle because the daughterboard might be a little glued.

To reassemble your device, follow these instructions in reverse order.