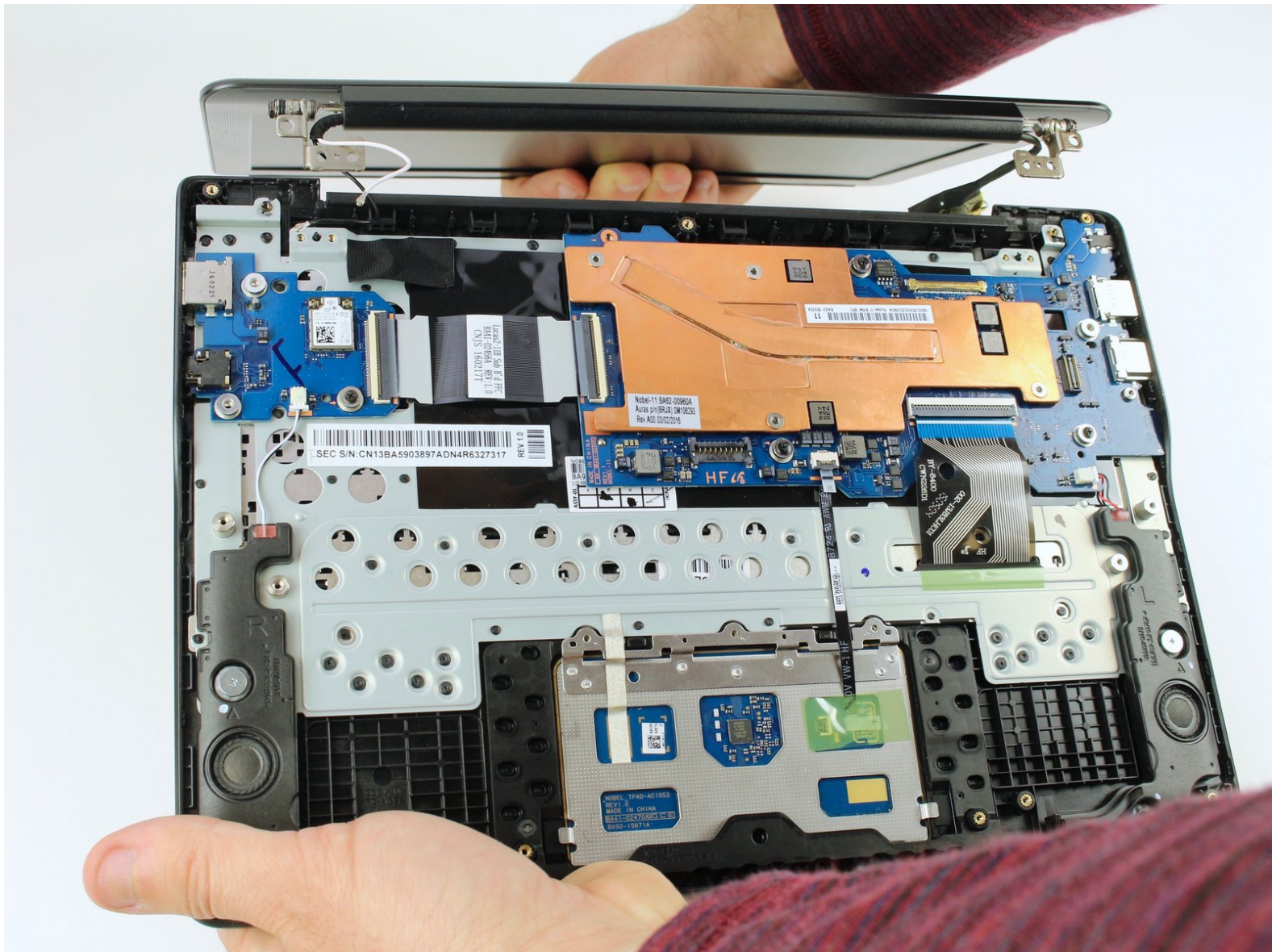




Samsung Chromebook 3 Display Replacement

This guide will explain how to replace a broken display on a Samsung Chrombook 3.

Written By: Austin Blakely



INTRODUCTION

This guide will show a step by step process to replace the display on the Samsung Chromebook 3. You will need to remove the bottom case and battery prior to replacing the display.



TOOLS:

- [Phillips #00 Screwdriver](#) (1)
- [iFixit Opening Tools](#) (1)
- [Spudger](#) (1)



PARTS:

- [Samsung XE500C13 Chromebook Lower Case](#) (1)
- [Samsung XE500C13 Chromebook Battery](#) (1)
- [Samsung XE500C13 Chromebook Display Assembly](#) (1)

Step 1 — Bottom Case



- Place the Chromebook face down so that the bottom case is exposed.
- Using a Phillips #00 screwdriver, remove nine 4.6mm screws from the back casing.

Step 2



- Use a iFixit opening tool to gently pry the case up from the vent on the hinge side of the Chromebook.
- ⓘ You should hear a popping sound as the connectors disengage inside the case.

Step 3



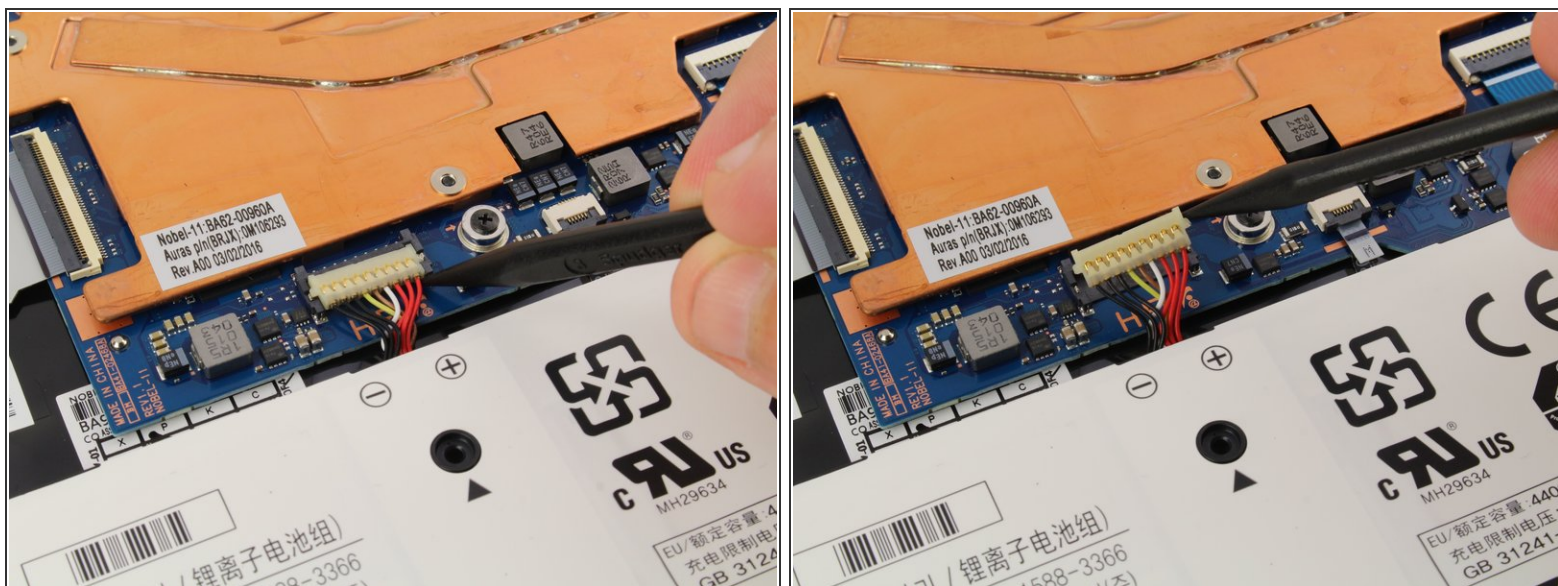
- Lift the case up and off the device

Step 4 — Battery



- Locate the battery and remove the four 4.6mm screws at the corners which attach it to case using a Phillips #00 screwdriver.

Step 5



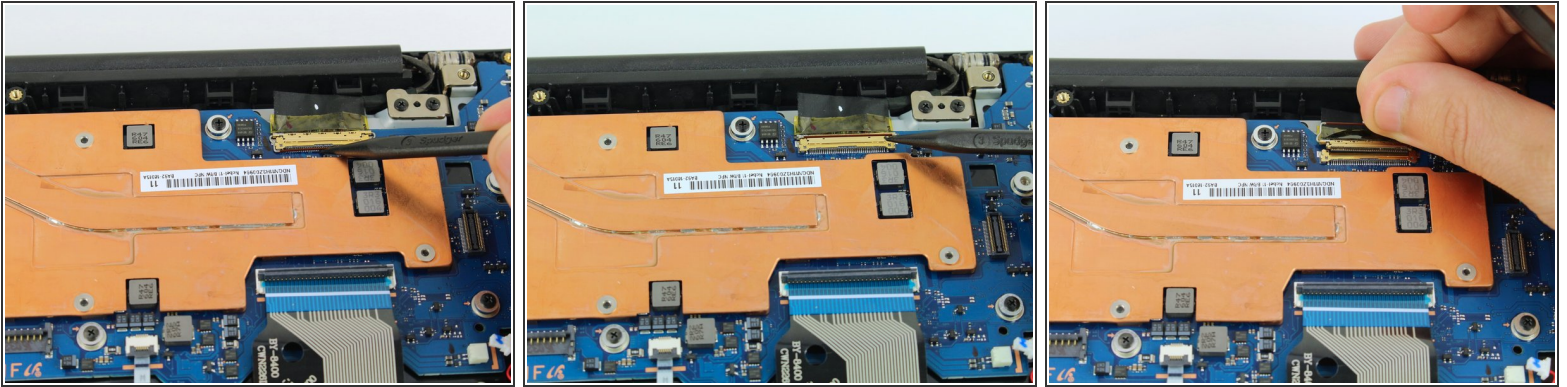
- Use a spudger to gently pry the power cable cord upwards from the motherboard.

Step 6



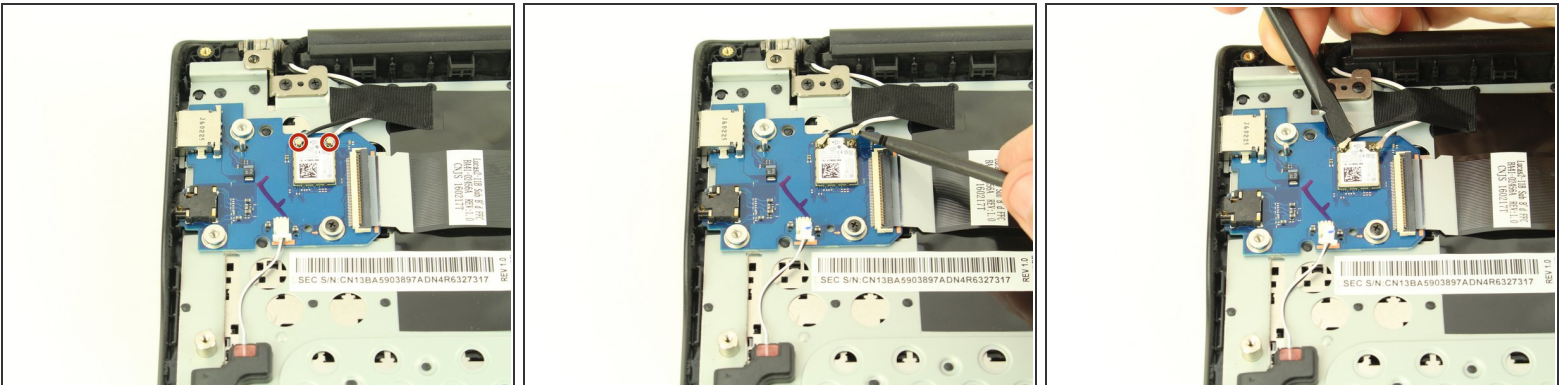
- Lift the battery up and out from the case.

Step 7 — Display



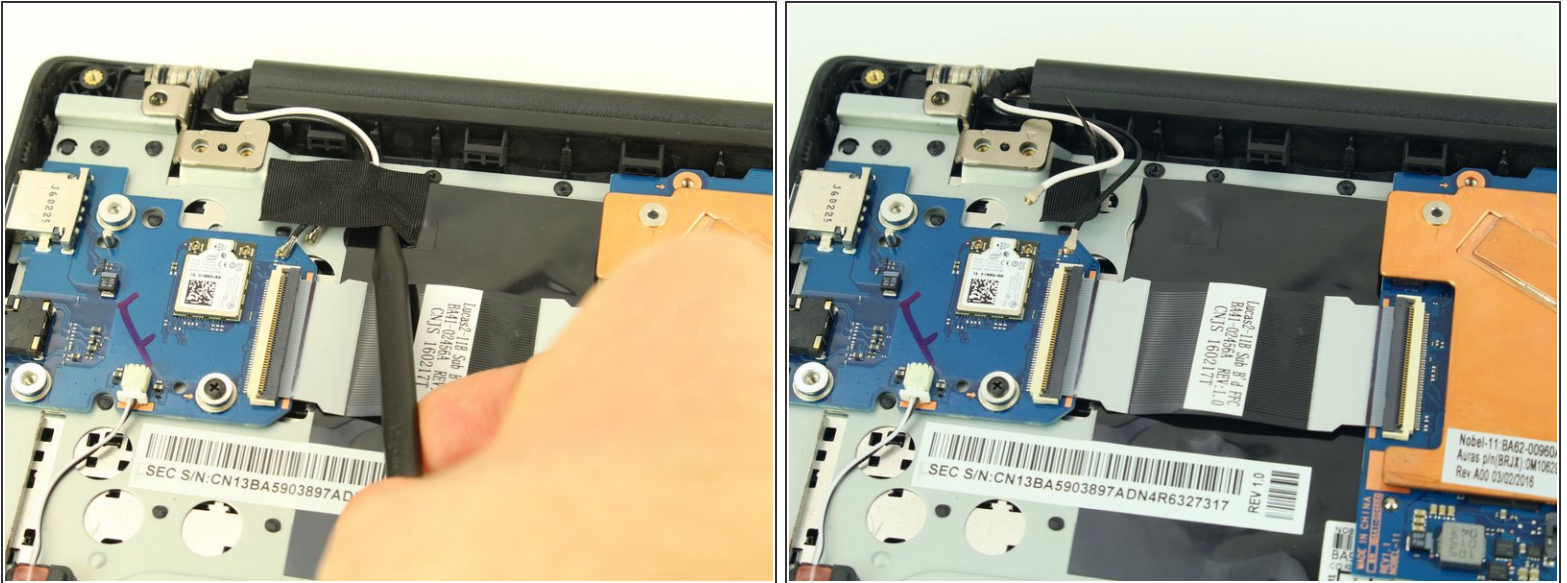
- Disengage the gold connector joining the display and motherboard by flipping up the hinge with a spudger and gently disconnecting it with a spudger or your fingers.

Step 8



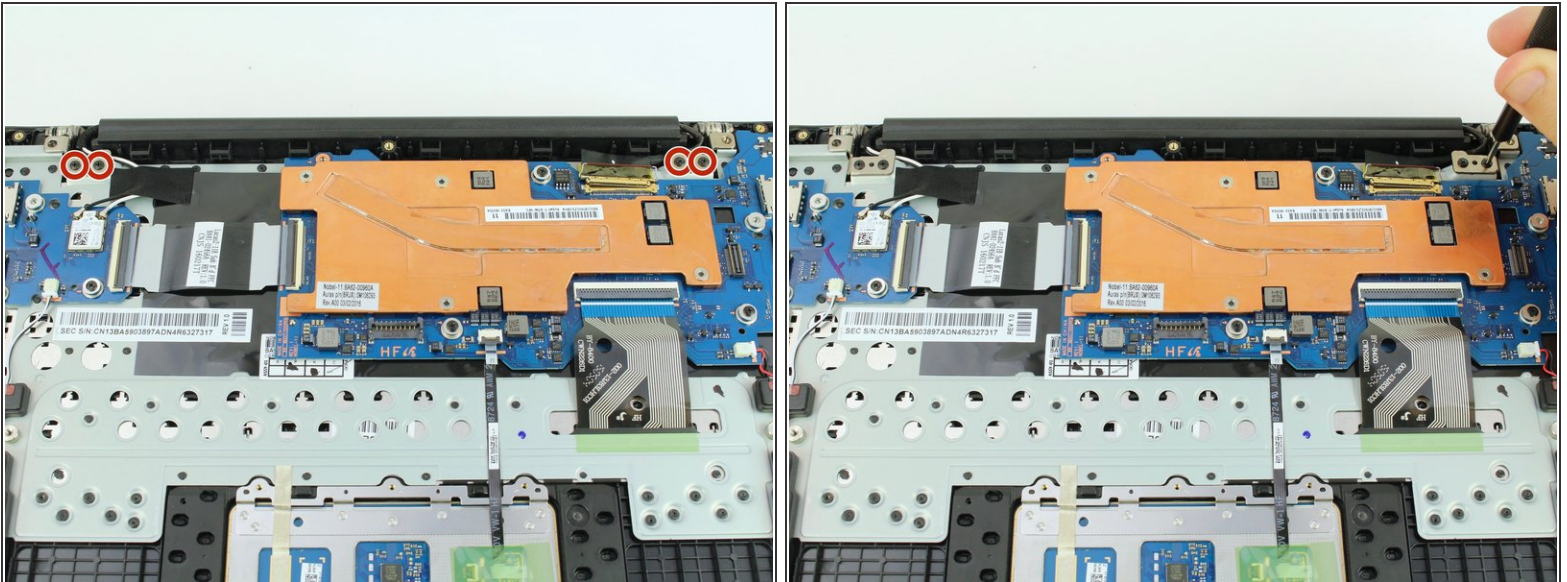
- Next disconnect the small coaxial cables from the wireless chip on the daughterboard by prying upwards with a spudger.

Step 9



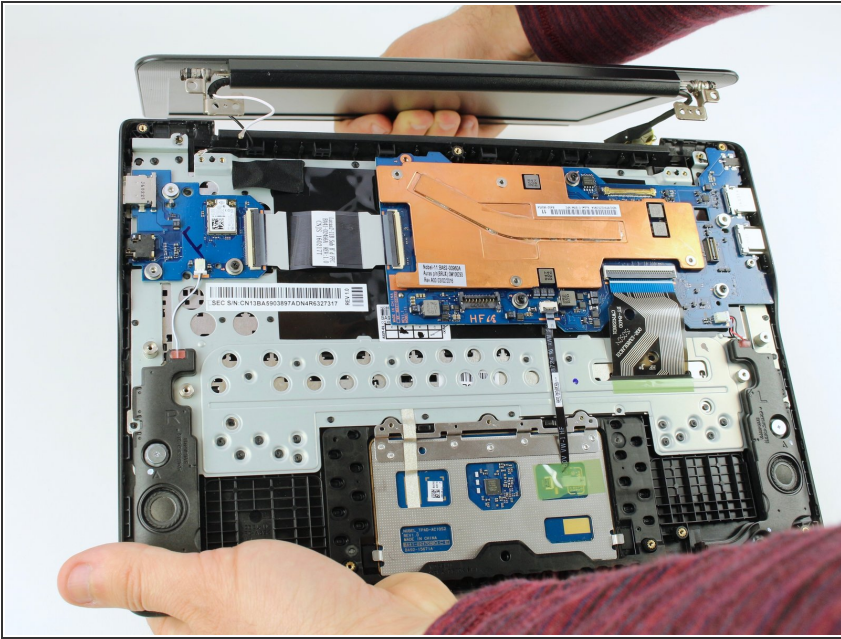
- Flip up at least one side of the adhesive tape holding the coaxial cables in place. When the display is removed, the cables are coming with it!

Step 10



- Finally, remove the four 4.6mm screws from the display mounts using a Phillips #00 screwdriver.
- ⓘ It might be easier to open the laptop before removing these screws as the display will only come off while in the open position.

Step 11



- Open the laptop and remove the display.

To reassemble your device, follow these instructions in reverse order.