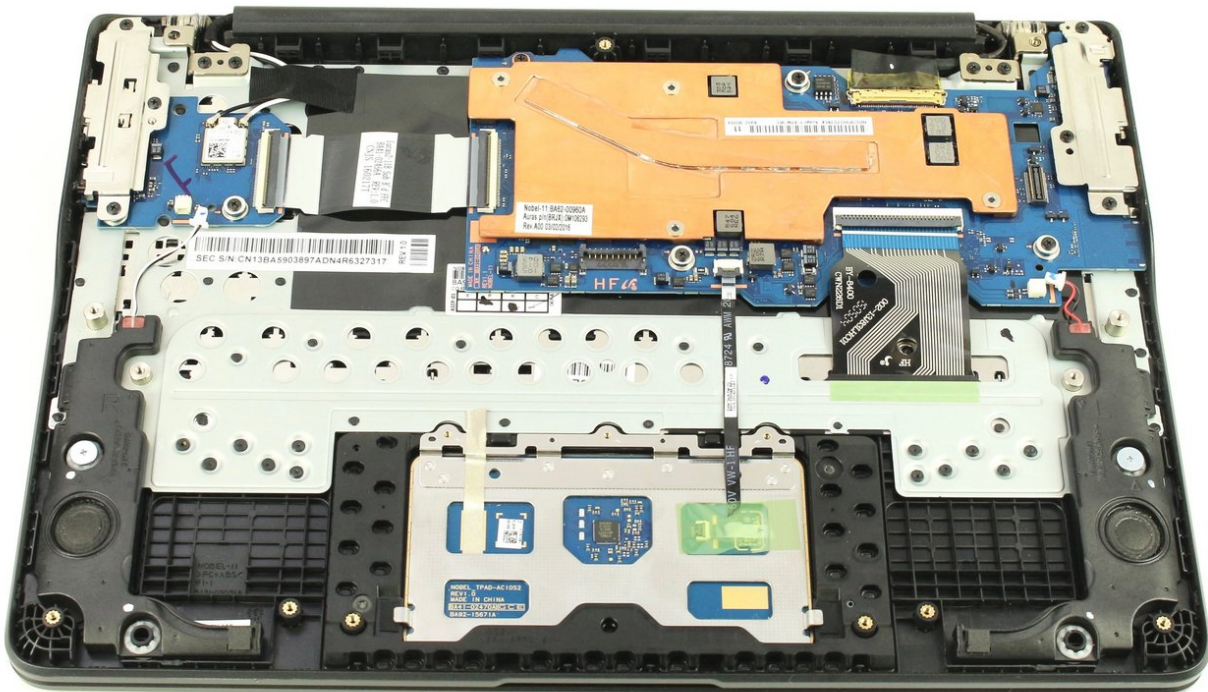




Samsung Chromebook 3 Motherboard Replacement

This guide show how to replace the motherboard in a Samusung Chromebook 3.

Written By: Austin Blakely



INTRODUCTION

This guide will show you how to replace the motherboard on your Samsung Chromebook 3. The motherboard also contains the charging port, HDMI port, and left side USB port. All of these ports are soldered to the board, requiring a full motherboard replacement to fix.



TOOLS:

- [Phillips #00 Screwdriver](#) (1)
- [iFixit Opening Tools](#) (1)
- [Spudger](#) (1)



PARTS:

- [Samsung XE500C13 Chromebook Lower Case](#) (1)
- [Samsung XE500C13 Chromebook Battery](#) (1)
- [Samsung XE500C13 Chromebook Motherboard](#) (1)

Step 1 — Bottom Case



- Place the Chromebook face down so that the bottom case is exposed.
- Using a Phillips #00 screwdriver, remove nine 4.6mm screws from the back casing.

Step 2



- Use a iFixit opening tool to gently pry the case up from the vent on the hinge side of the Chromebook.
- ⓘ You should hear a popping sound as the connectors disengage inside the case.

Step 3



- Lift the case up and off the device

Step 4 — Battery



- Locate the battery and remove the four 4.6mm screws at the corners which attach it to case using a Phillips #00 screwdriver.

Step 5



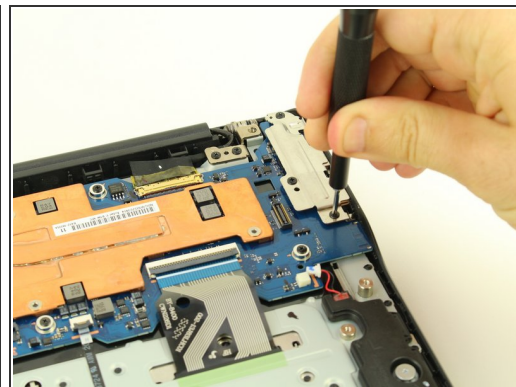
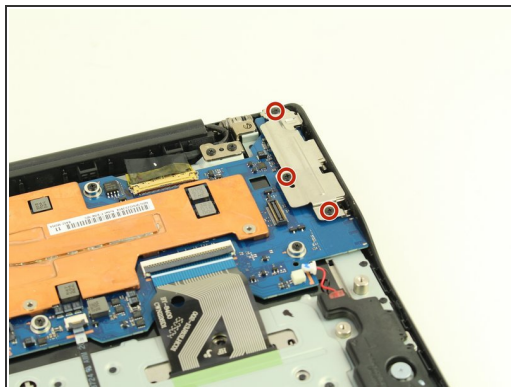
- Use a spudger to gently pry the power cable cord upwards from the motherboard.

Step 6



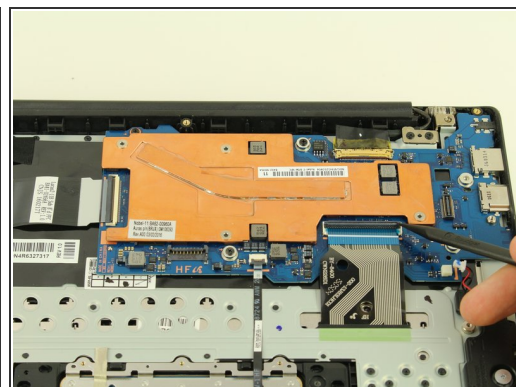
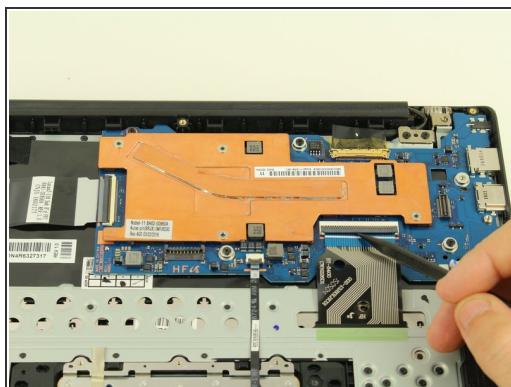
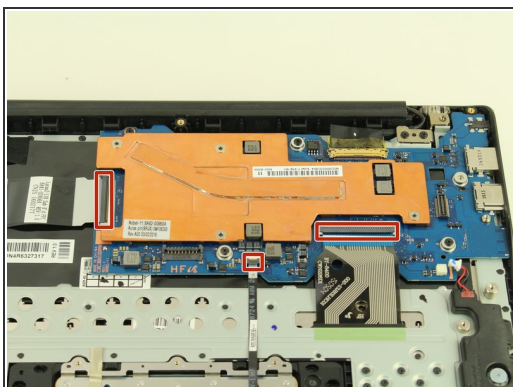
- Lift the battery up and out from the case.

Step 7 — Motherboard



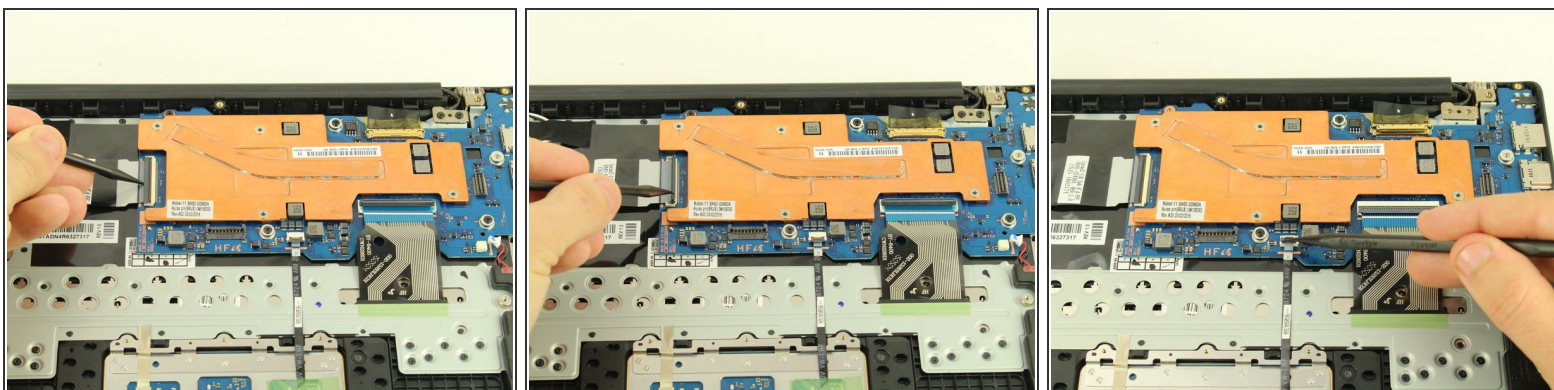
- Before you can get to the motherboard, remove the three 4.6mm screws from the port cover using a Phillips #00 screwdriver.

Step 8



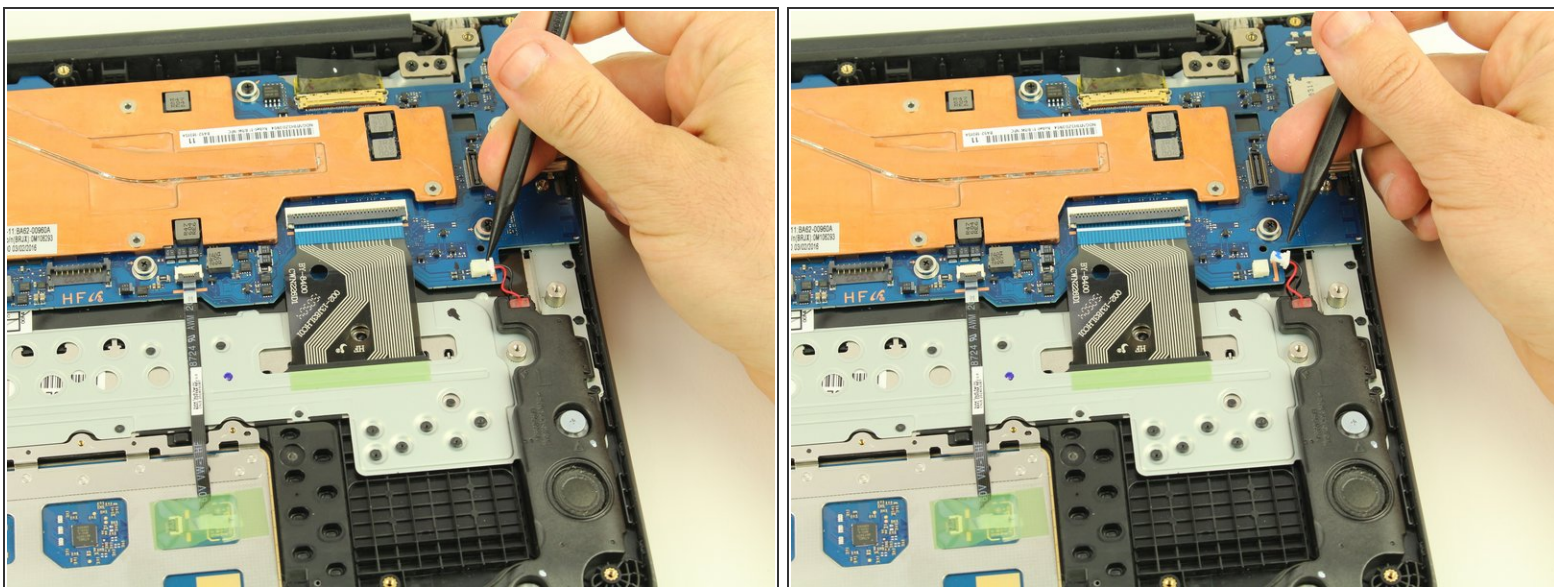
- Then, use a spudger to begin flipping up the grey covers on the ZIF connectors.

Step 9



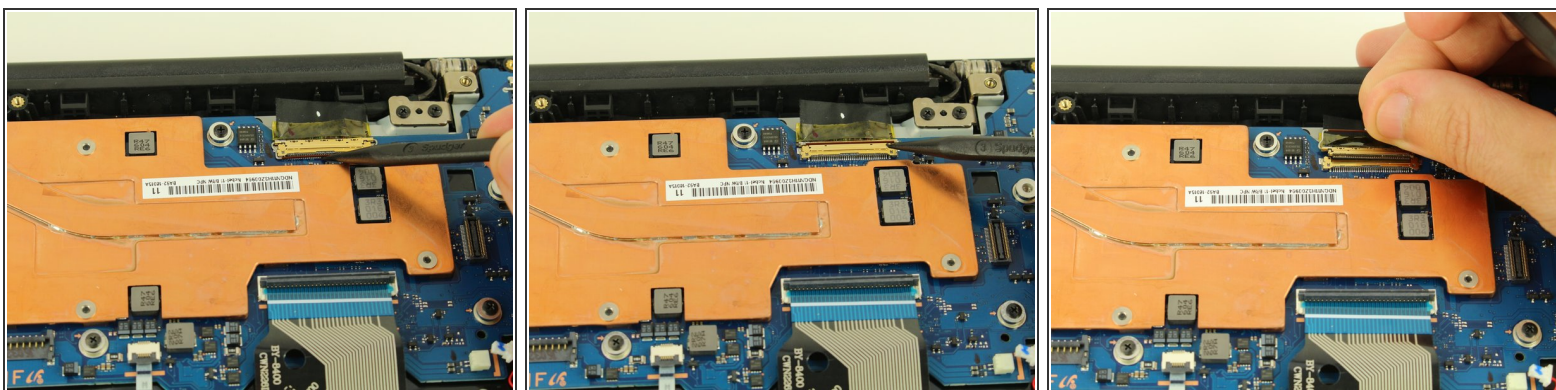
- Two more ZIF connectors to go!

Step 10



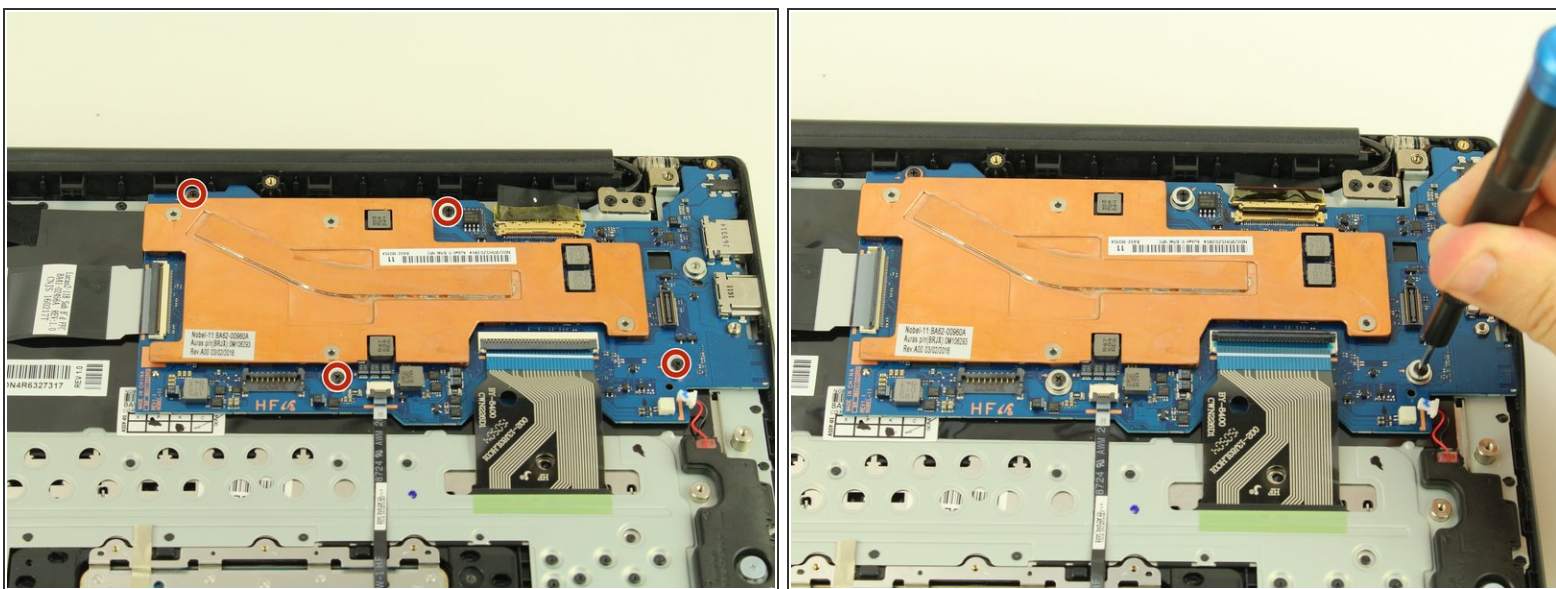
- Use a spudger to disconnect the cables going to the speaker by prying outward to the right.

Step 11



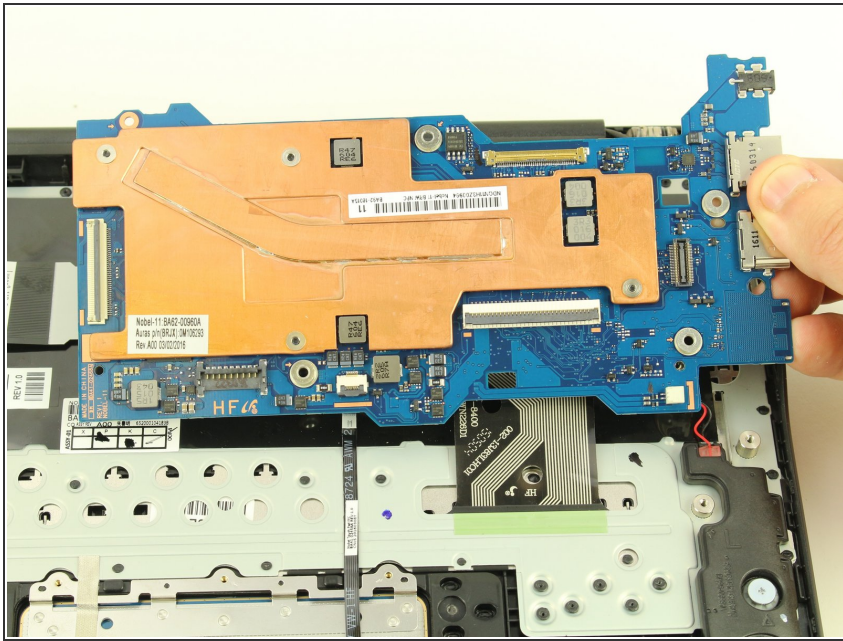
- Use a spudger to lift the hinge locking the gold colored display cable in place.
- Then gently coax the display cable from its connector using your fingers or a spudger.

Step 12



- Use your Phillips #00 screwdriver to remove four 4.6mm screws from the motherboard.

Step 13



- Ensure all cables are clear and remove the motherboard.

To reassemble your device, follow these instructions in reverse order.