



Samsung Chromebook XE500C21-A03US

Keyboard Replacement

Replace a faulty keyboard in a Samsung Chromebook XE500C21-A03US.

Written By: Alexandria Raessner



INTRODUCTION

A fast and simple guide to replace the keyboard to your Chromebook.





TOOLS:

- [Phillips #00 Screwdriver](#) (1)
 - [iFixit Opening Tools](#) (1)
 - [Precision Tweezers Set](#) (1)
 - [Phillips #000 Screwdriver](#) (1)
 - [Spudger](#) (1)
-

Step 1 — Back Cover

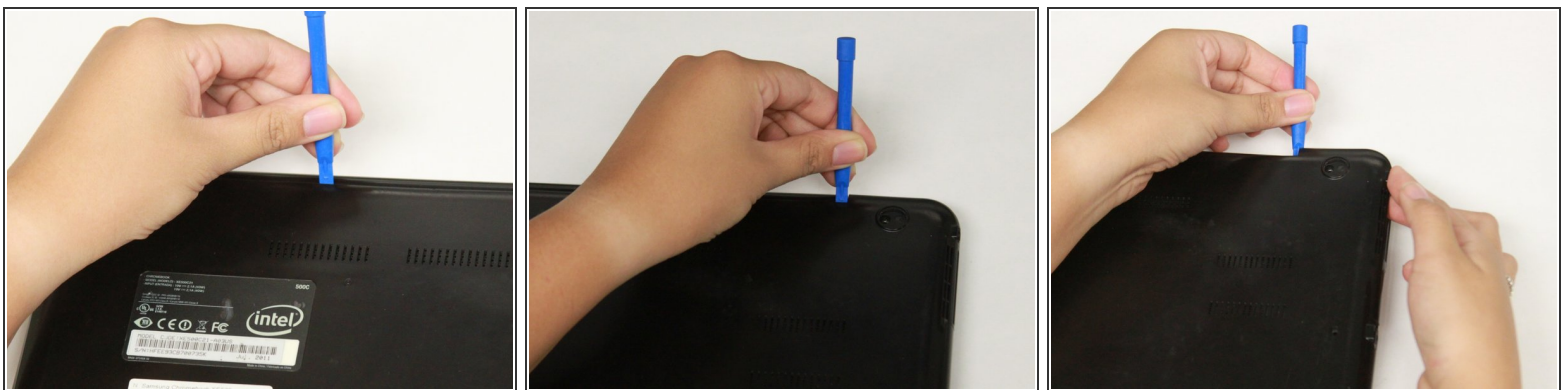


 Turn the power off before beginning this step.

 Most Chromebooks contain rubber circle pads on each of the four corners to cover the screws. In order to remove the rubber pads, simply use any opening tool.

- Lay the Chromebook down so that the bottom cover is facing upward.
- Using a Phillips #00 screwdriver, remove all seven 5.5 mm screws from the back cover.

Step 2



- Place the opening tool in the divot between the spine of the Chromebook and the back cover.
- Slowly glide and push down the end of the opening tool along all sides of the Chromebook to detach the brackets. You will hear the brackets detach.

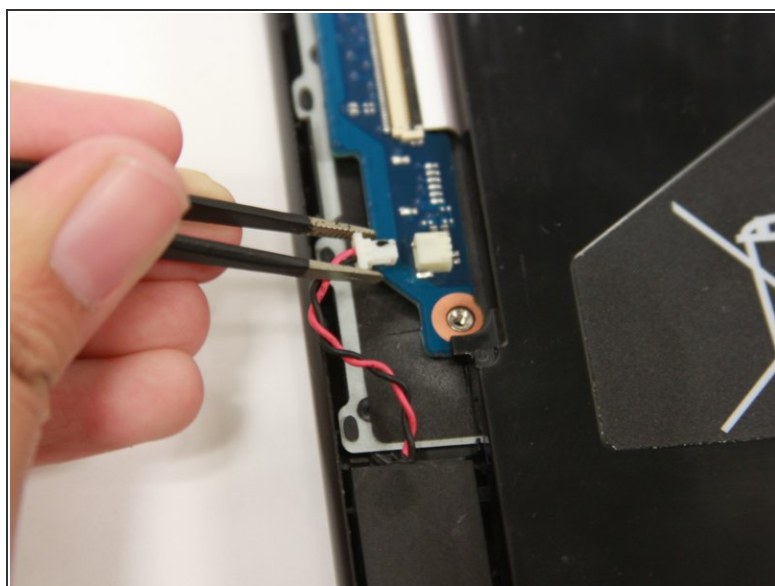
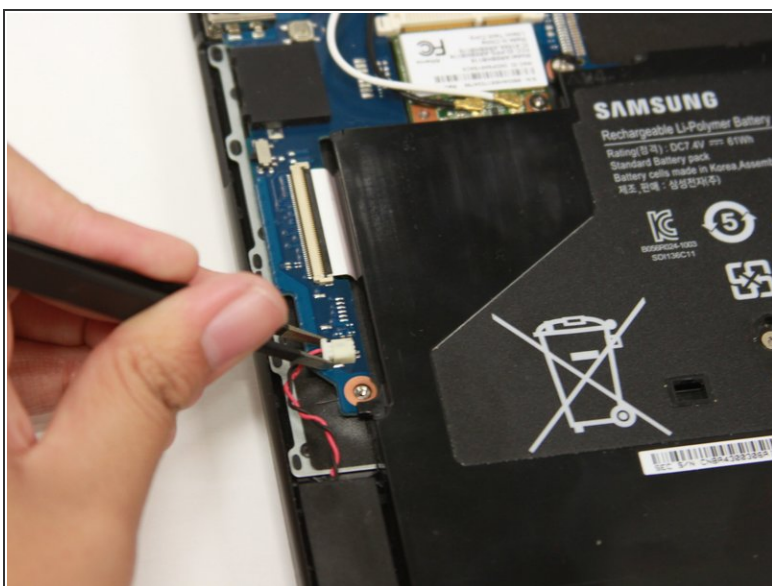
Step 3



- Using the opening tool, pry off the back cover of the Chromebook

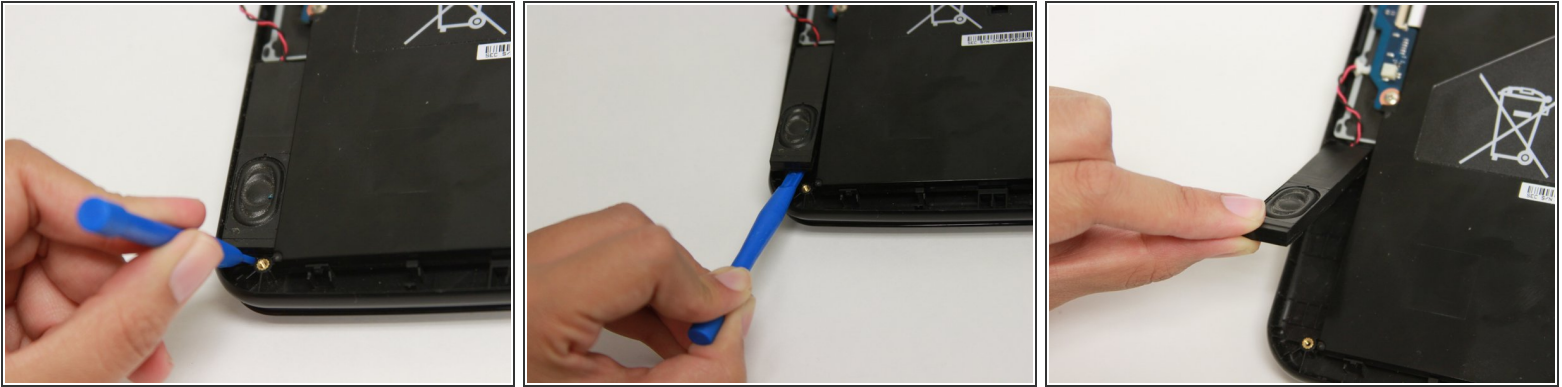
⚠ Be gentle while prying to avoid breaking the back cover.

Step 4 — Speakers



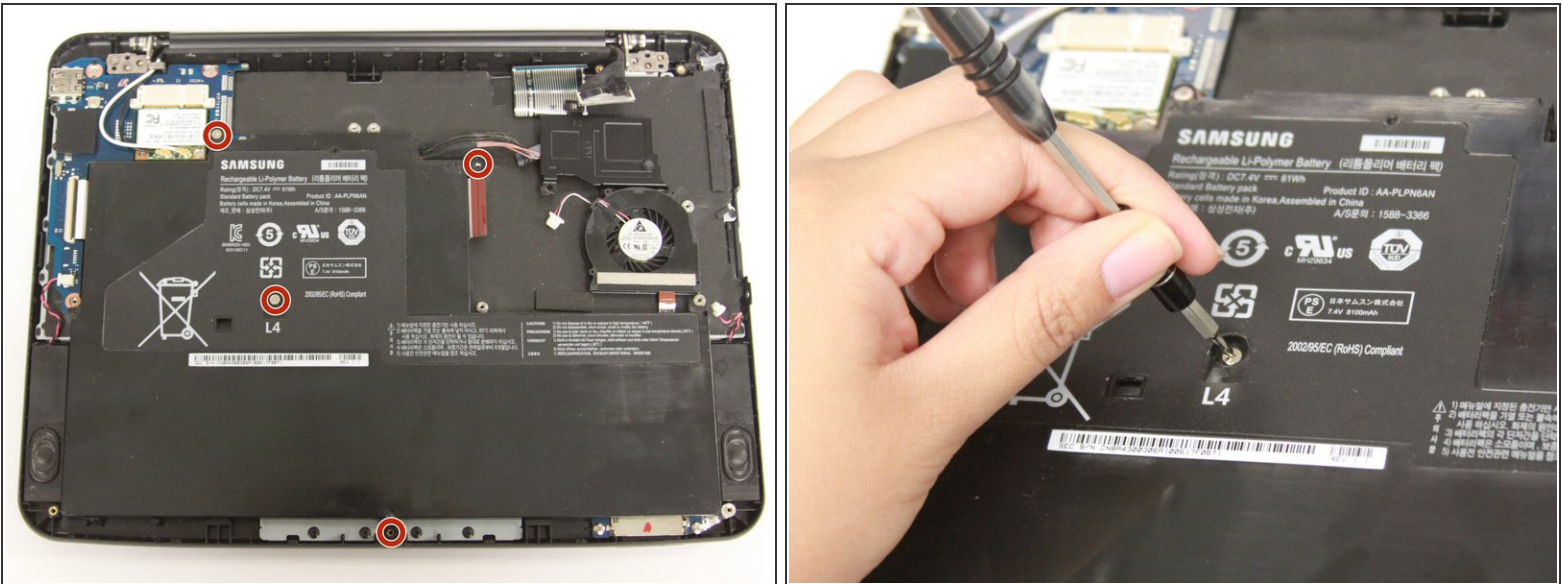
- Use a blunt precision tweezer to remove the speaker cord from the R.A.M.

Step 5



- Use the prying tool to find the divot then slowly add pressure until the speaker pops out.
- Gently lift and remove the speaker from the Chromebook.

Step 6 — Battery



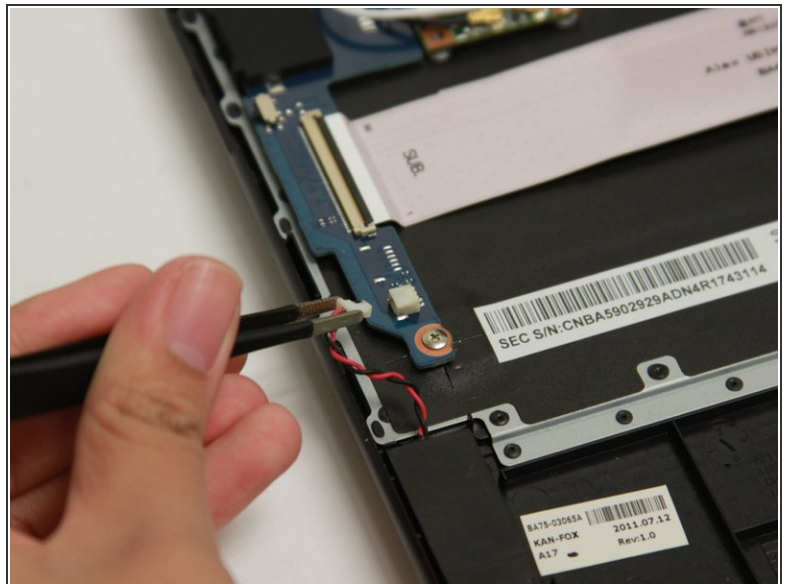
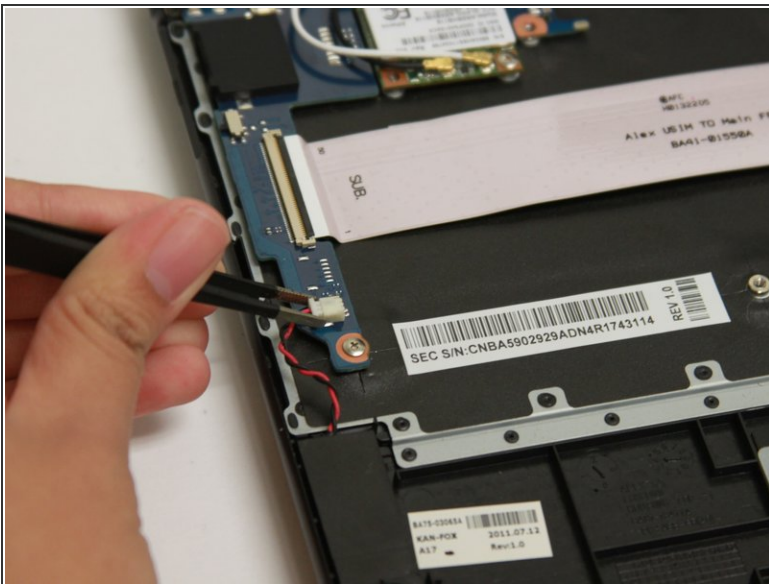
- Remove the four 3 mm screws using a Phillips #000 screwdriver.

Step 7



- Carefully lift the top of the battery then pull it away from you to remove it.
- ❗ Some batteries may be attached via a battery connector. Disconnect the battery connector by simply pulling straight up at its base.

Step 8 — RAM



- Use a blunt precision tweezer to remove the speaker cord from the RAM

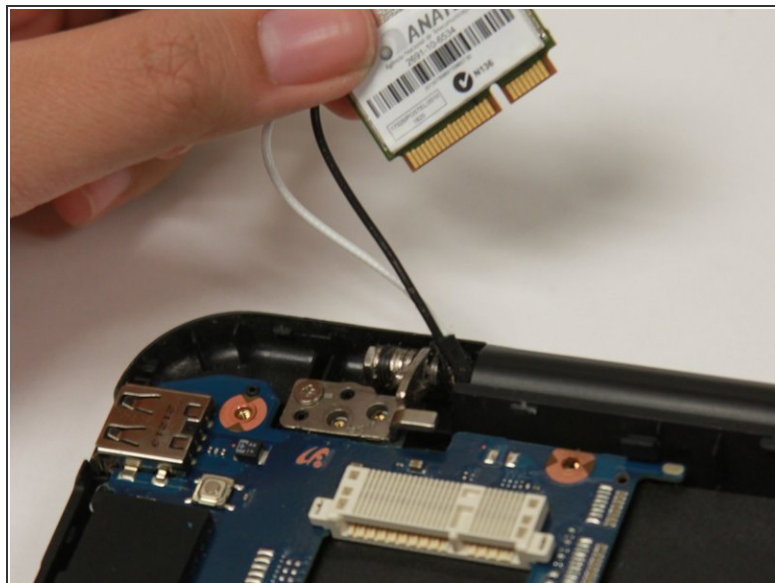
Step 9



- Using a Phillips #00 screwdriver, remove all six 2.5 mm screws .

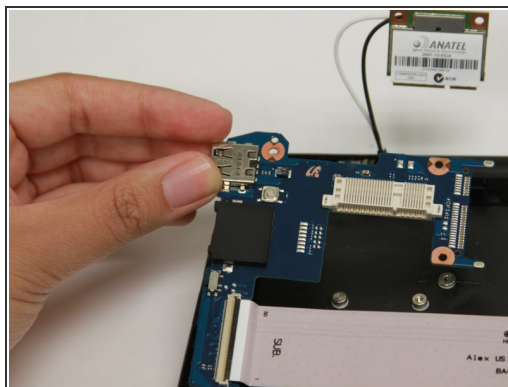
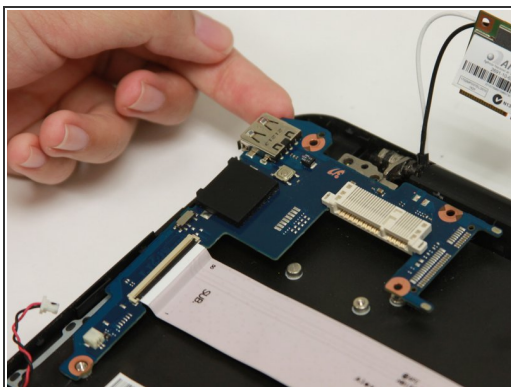
- ① Start removing the screws from the wifi card.

Step 10



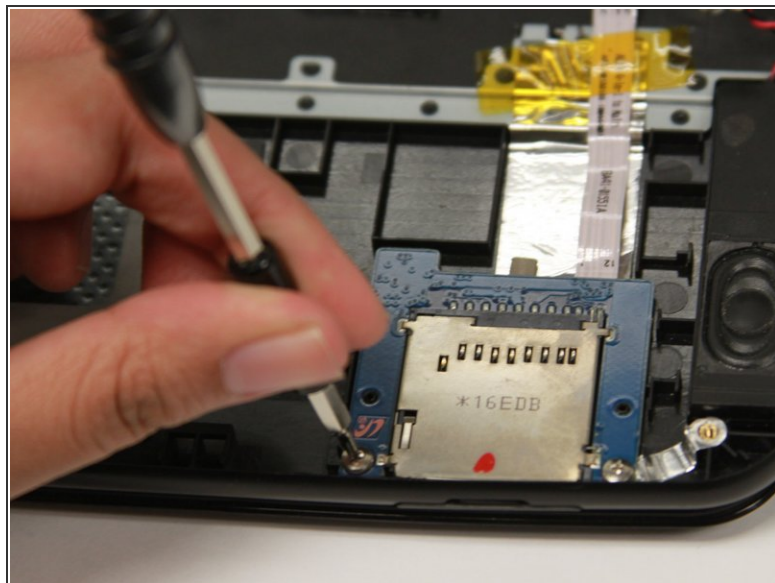
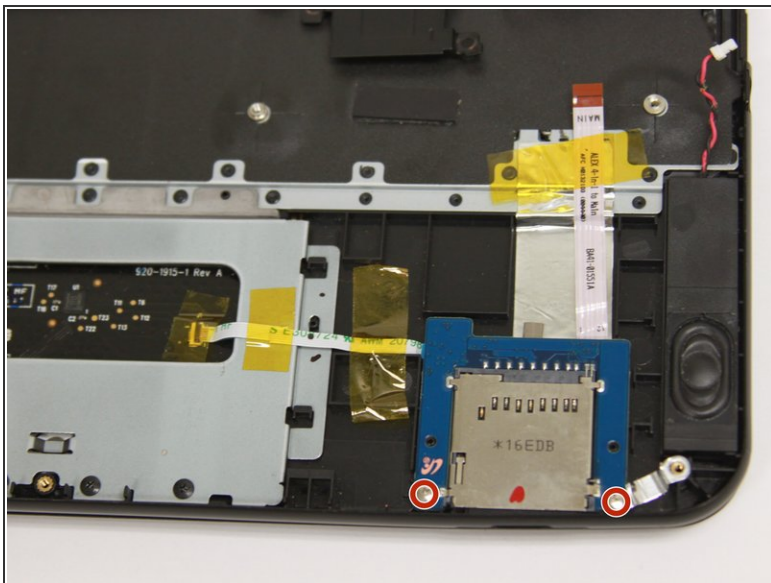
- Gently lift the bottom of the wifi card then pull it towards you to disconnect it from the socket.
- ❗ Our Chromebook does not have a circuit board. Remove all units connected to the circuit board if necessary.

Step 11



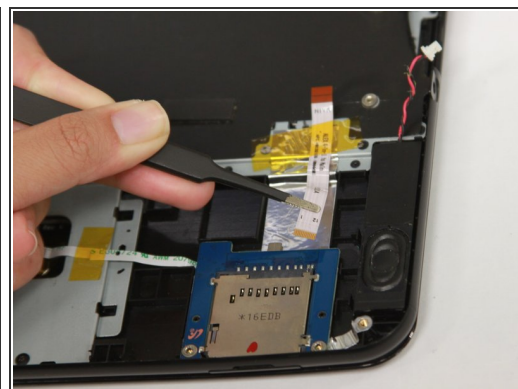
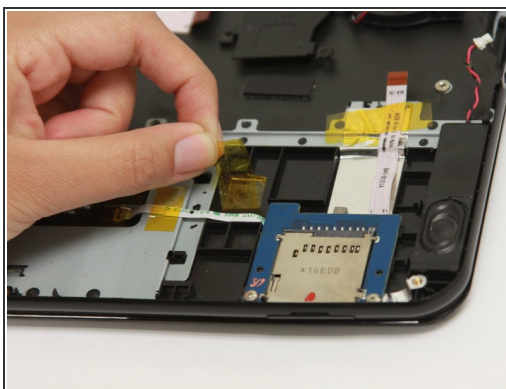
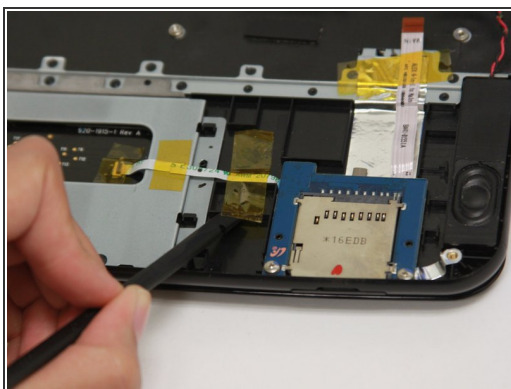
- Gently lift the top left corner of the RAM and pull upward to remove it from the Chromebook.

Step 12 — SD Card Reader



- Remove both 3 mm screws using a Phillips #000 screwdriver.

Step 13



- Remove the yellow tape on the left ribbon cable with a spudger.
- Use a blunt precision tweezer to remove both ribbon cables attached to the SD card reader.

Step 14



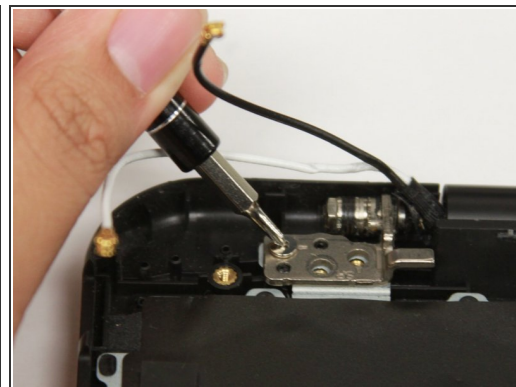
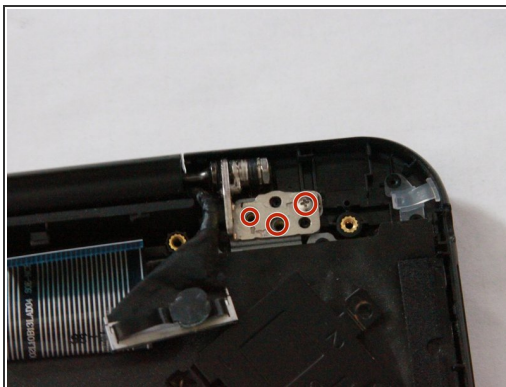
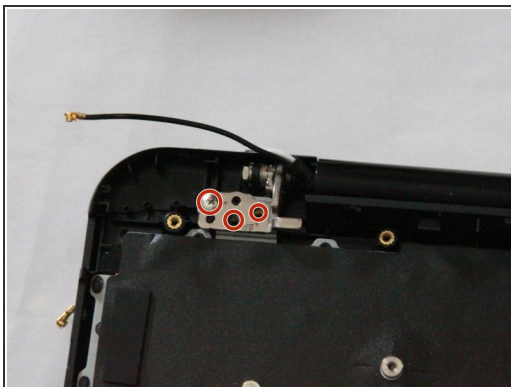
- Gently lift the top portion of the SD card reader and pull it away from you to remove it.
- ☑ To reassemble, first insert the bottom of the SD card reader then carefully push downward.

Step 15 — Keyboard



- Using a blunt precision tweezer, pull the white wire off the wificard.
- Repeat step to remove the black wire to detach the wificard.

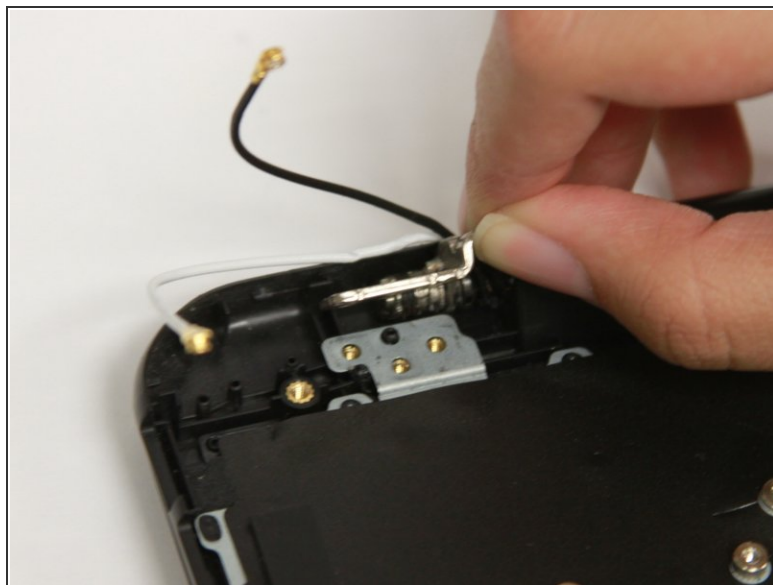
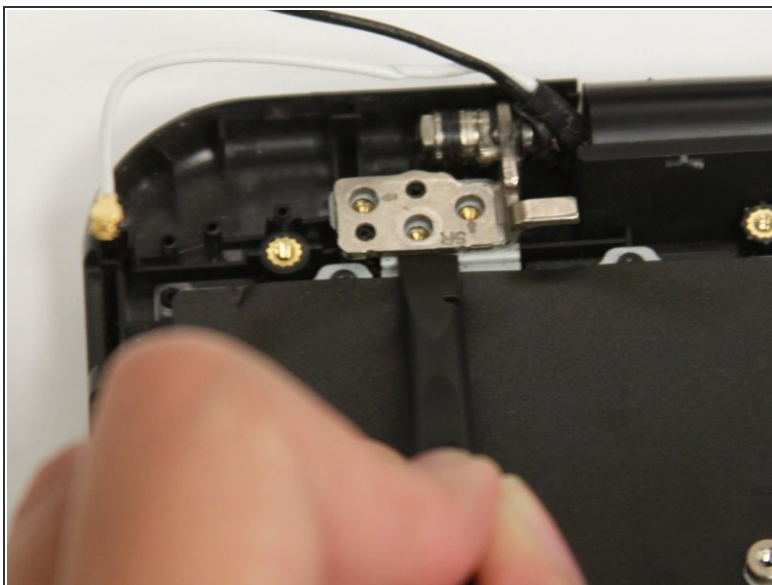
Step 16



- Using the Phillips #00 screwdriver, remove all six 3.5 mm screws to detach the hinges from the keyboard.

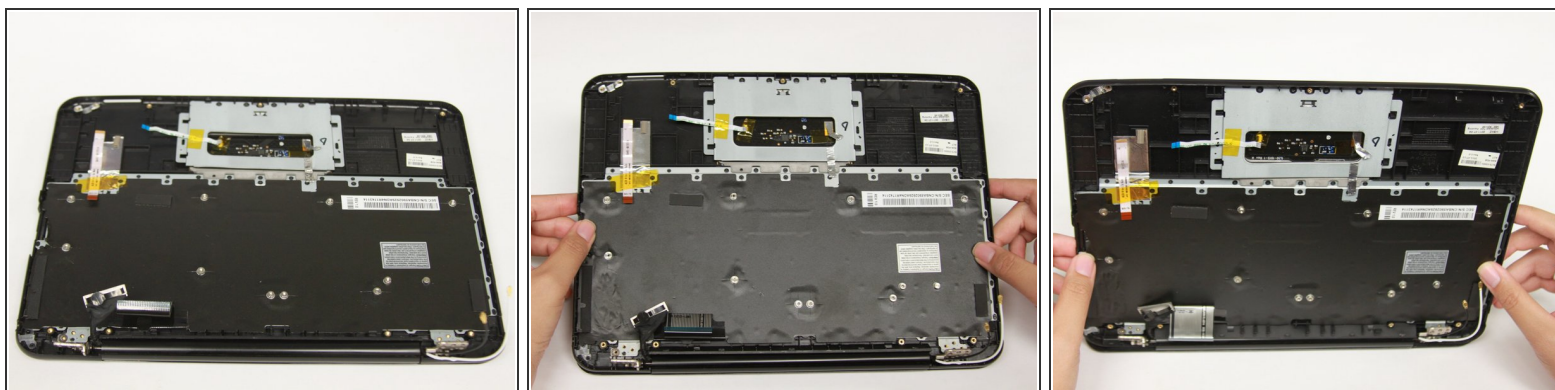
 The Chromebook displayed does not have all six screws.

Step 17



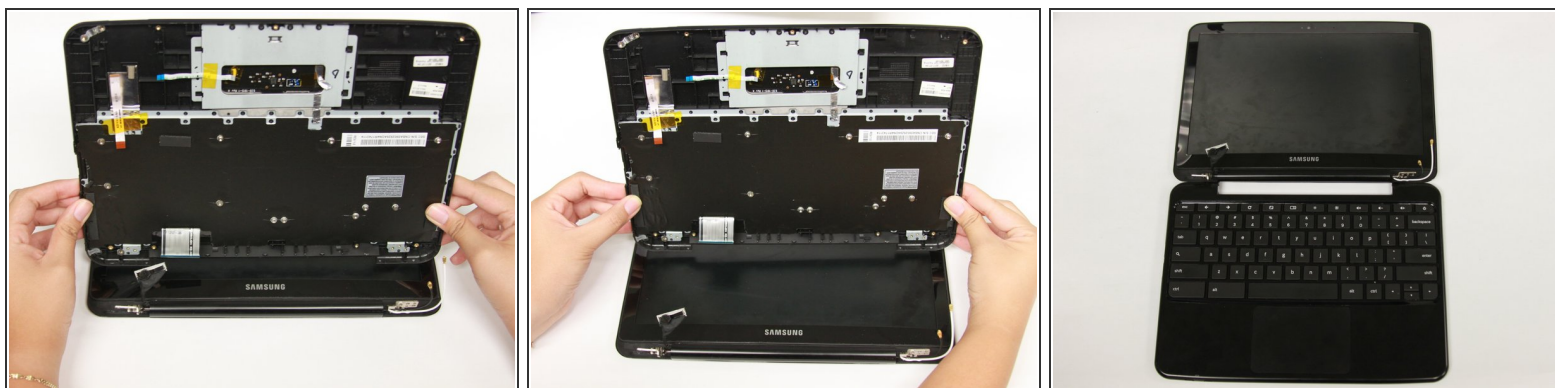
- Using the plastic spudger, place it under the hinge and pry it open.
- Use your hand to lift the hinge.
- Repeat on other side.

Step 18



- Rotate the Chromebook 180 degrees so that the spine and hinges are facing you.
- Lift the keyboard and trackpad upward.

Step 19



- Pull the keyboard and trackpad away from you to detach them from the spine of the Chromebook.

To reassemble your device, follow these instructions in reverse order.