



Samsung Chromebook XE500C21-A03US RAM Replacement

Replace a faulty RAM in a Samsung Chromebook XE500C21-A03US.

Written By: huy



INTRODUCTION

This guide will help you replace your RAM in your Chromebook by showing you step-by-step on how to remove it.





TOOLS:

- [Phillips #00 Screwdriver](#) (1)
 - [iFixit Opening Tools](#) (1)
 - [Phillips #000 Screwdriver](#) (1)
-

Step 1 — Back Cover

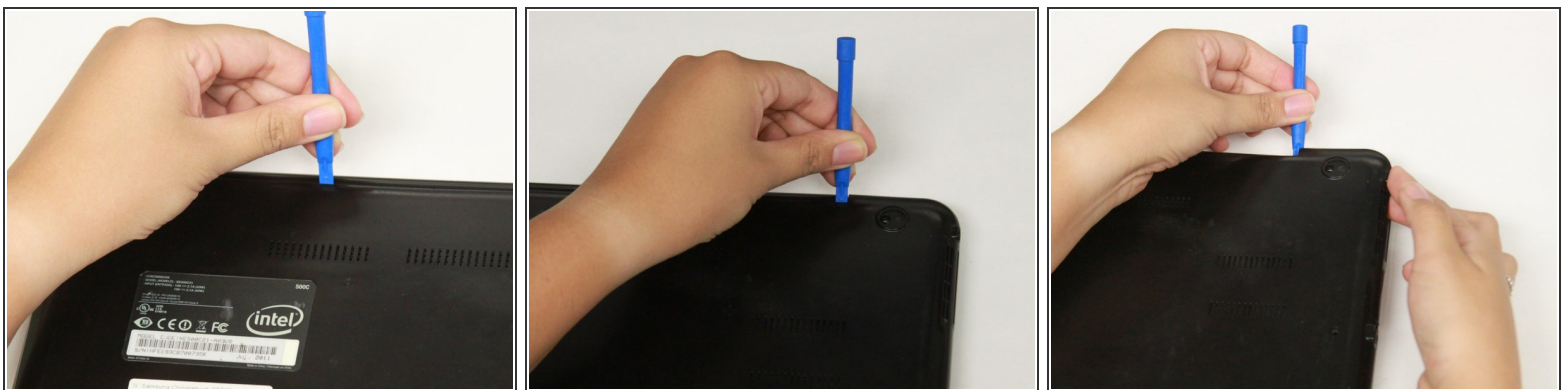


 Turn the power off before beginning this step.

 Most Chromebooks contain rubber circle pads on each of the four corners to cover the screws. In order to remove the rubber pads, simply use any opening tool.

- Lay the Chromebook down so that the bottom cover is facing upward.
- Using a Phillips #00 screwdriver, remove all seven 5.5 mm screws from the back cover.

Step 2



- Place the opening tool in the divot between the spine of the Chromebook and the back cover.
- Slowly glide and push down the end of the opening tool along all sides of the Chromebook to detach the brackets. You will hear the brackets detach.

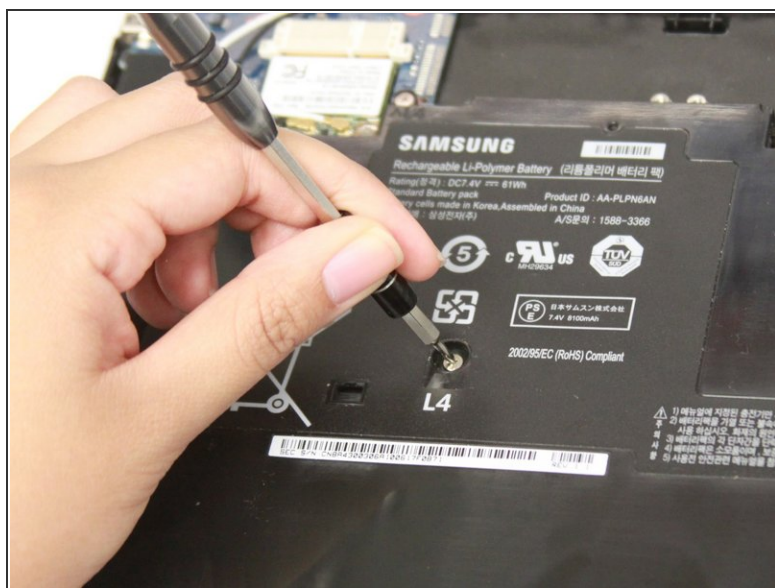
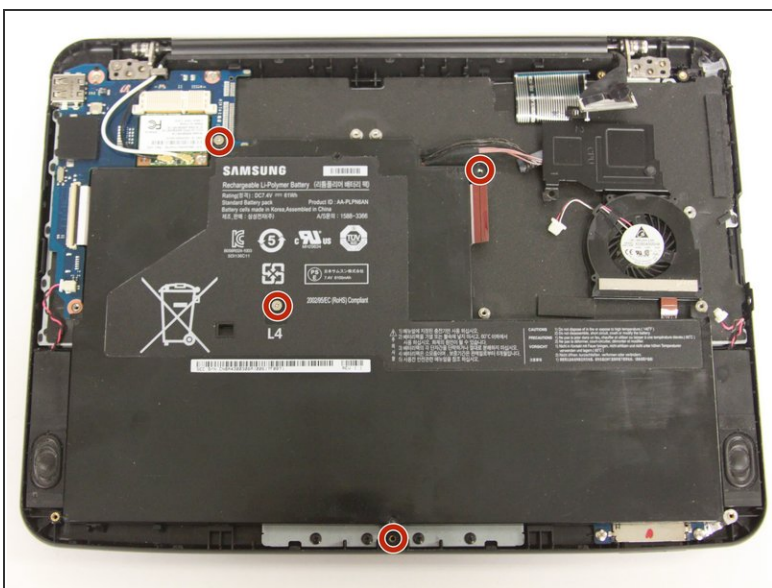
Step 3



- Using the opening tool, pry off the back cover of the Chromebook

⚠ Be gentle while prying to avoid breaking the back cover.

Step 4 — Battery



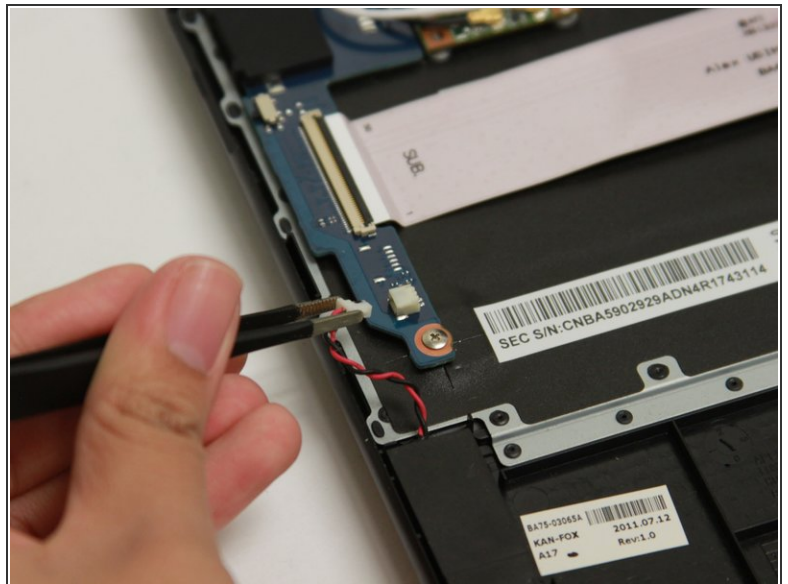
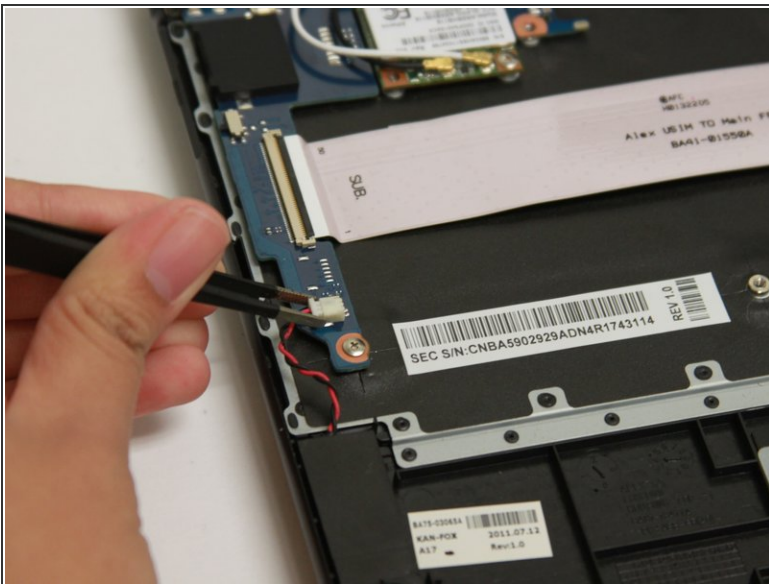
- Remove the four 3 mm screws using a Phillips #000 screwdriver.

Step 5



- Carefully lift the top of the battery then pull it away from you to remove it.
- ❗ Some batteries may be attached via a battery connector. Disconnect the battery connector by simply pulling straight up at its base.

Step 6 — RAM



- Use a blunt precision tweezer to remove the speaker cord from the RAM

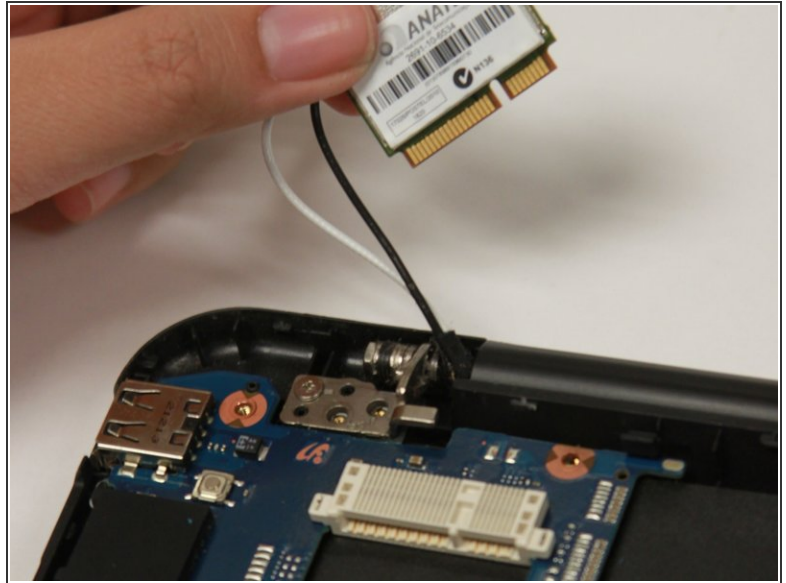
Step 7



- Using a Phillips #00 screwdriver, remove all six 2.5 mm screws .

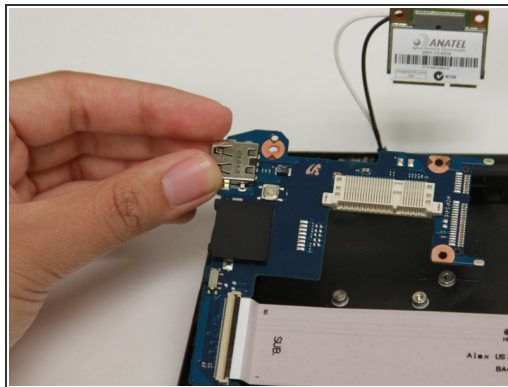
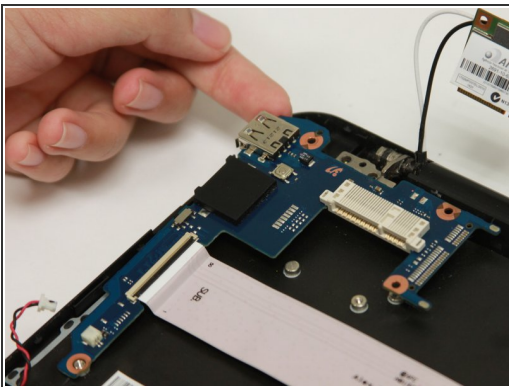
- ① Start removing the screws from the wifi card.

Step 8



- Gently lift the bottom of the wifi card then pull it towards you to disconnect it from the socket.
- ❗ Our Chromebook does not have a circuit board. Remove all units connected to the circuit board if necessary.

Step 9



- Gently lift the top left corner of the RAM and pull upward to remove it from the Chromebook.

To reassemble your device, follow these instructions in reverse order.