



Samsung Chromebook XE550C22 Back Panel Replacement

Replace the back panel on a Chromebook XE550C22.

Written By: Brenna Wolfe



INTRODUCTION

Replace the back panel on a Chromebook XE550C22.



TOOLS:

- [Metal Spudger](#) (1)
 - [JIS #0 Screwdriver](#) (1)
 - [Spudger](#) (1)
-

Step 1 — Back Panel



⚠ Turn the power off before beginning this step.

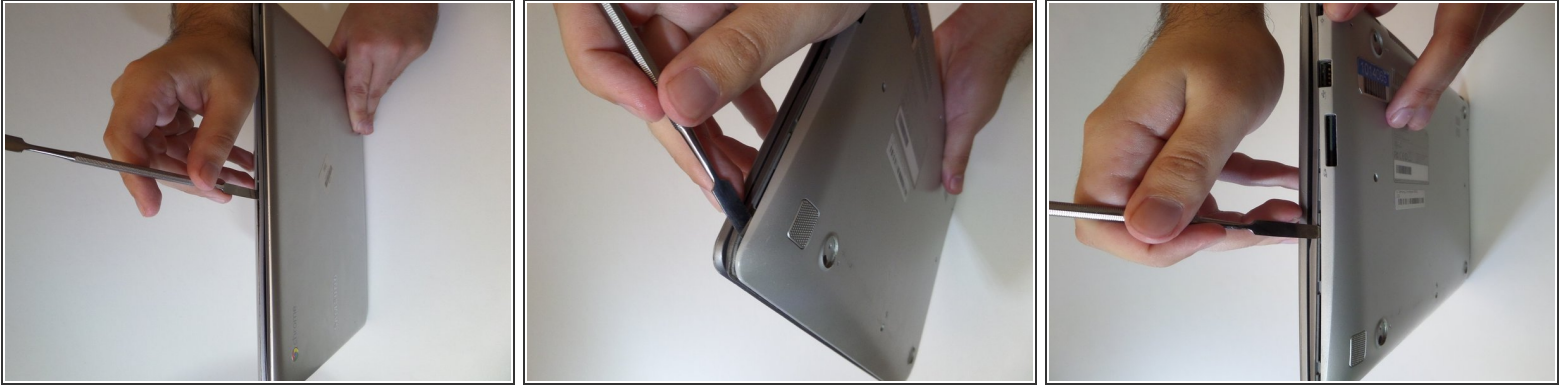
- Using the spudger, remove the four 1/2 inch skid pads from the back of the laptop.

Step 2



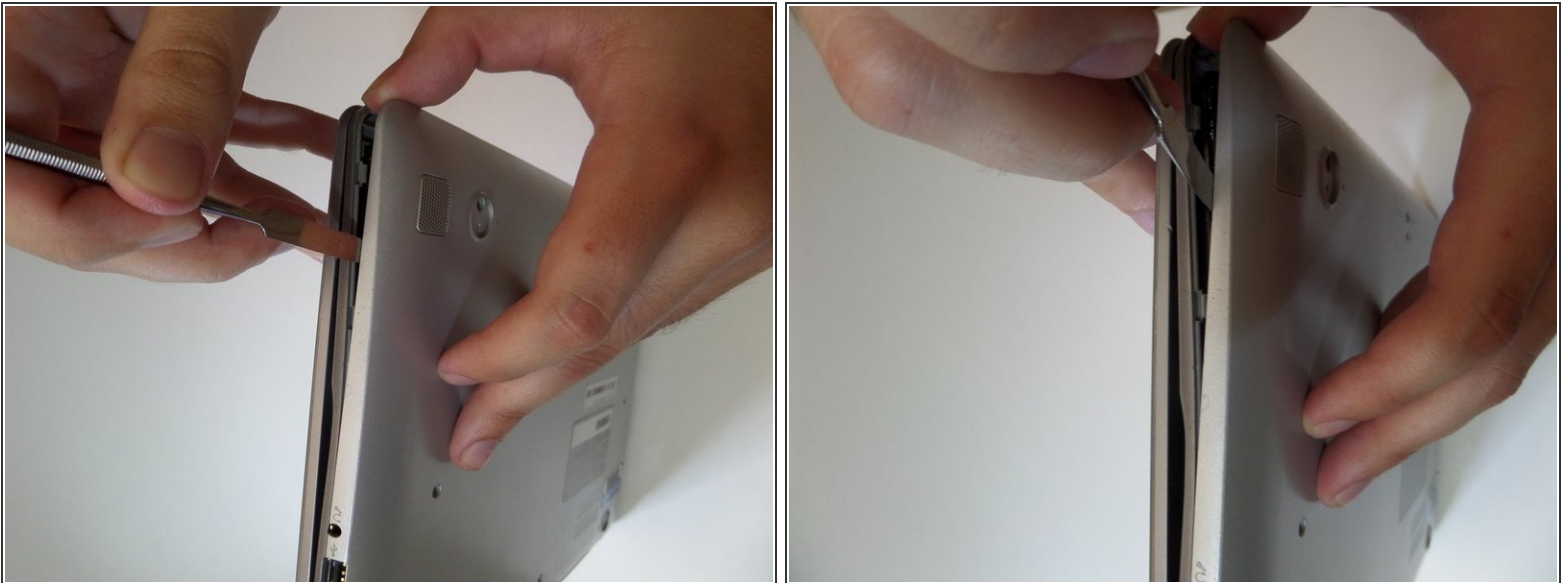
- Remove the eight 7mm screws using the J0 Screwdriver.

Step 3



- Starting at the center front of the laptop, insert the metal spudger between the keyboard panel and the bottom panel, separating the bottom panel from the laptop.
- Continue prying around the sides to release more brackets.

Step 4



- After disconnecting all the brackets, pull the back panel away from the laptop.

i Note: The back panel has some flex to it, don't be afraid to use some force.

To reassemble your device, follow these instructions in reverse order.