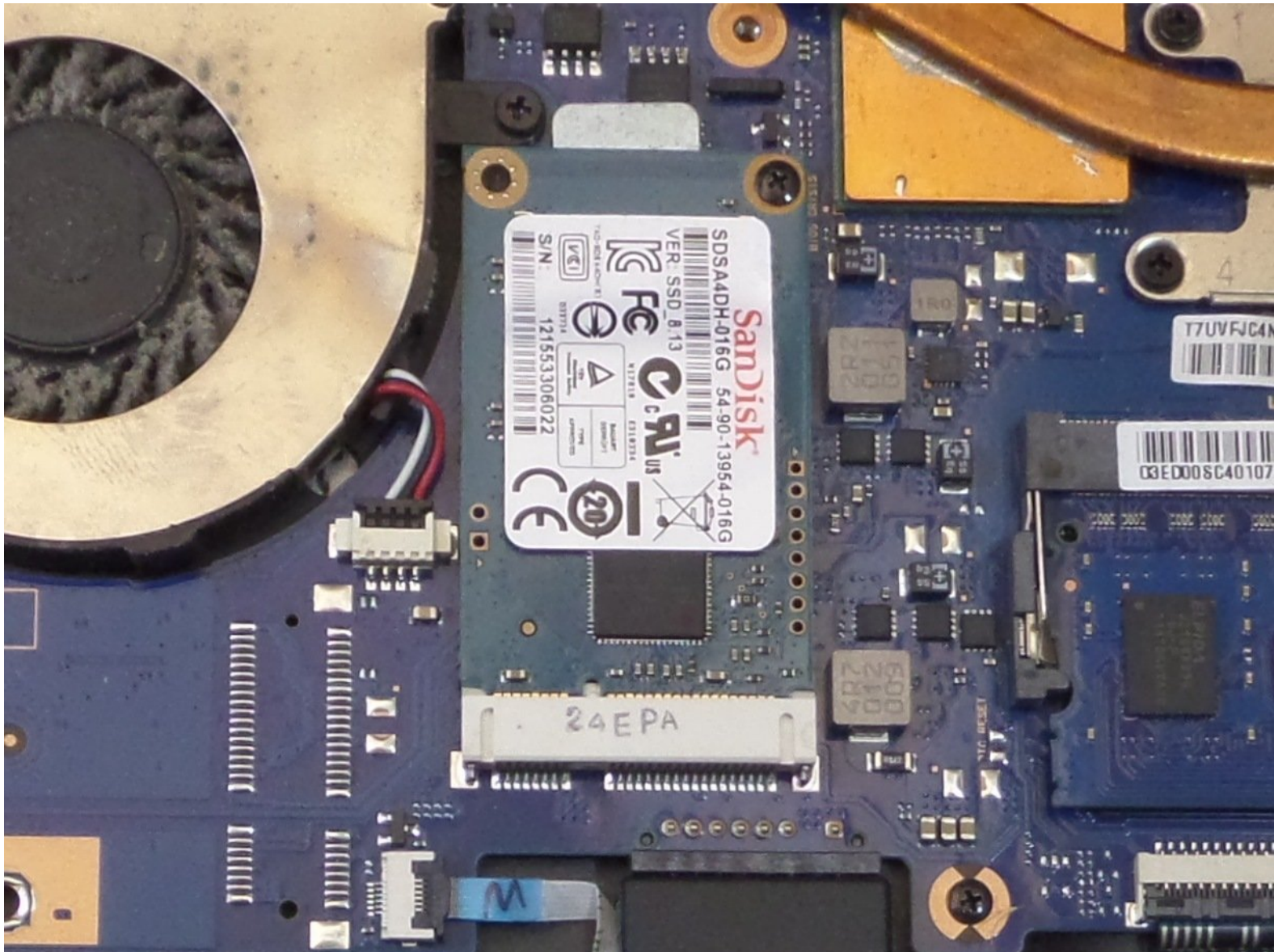




Samsung Chromebook XE550C22 SSD Replacement

Replace or upgrade your SSD for your Samsung Chromebook XE550C22

Written By: Abel Osorio



INTRODUCTION

This guide will help you remove a bad SSD. The SSD is the main location that your Chromebook stores all important information such as the operating system.




TOOLS:

- [Metal Spudger](#) (1)
 - [JIS #0 Screwdriver](#) (1)
 - [Spudger](#) (1)
-

Step 1 — Back Panel



 Turn the power off before beginning this step.

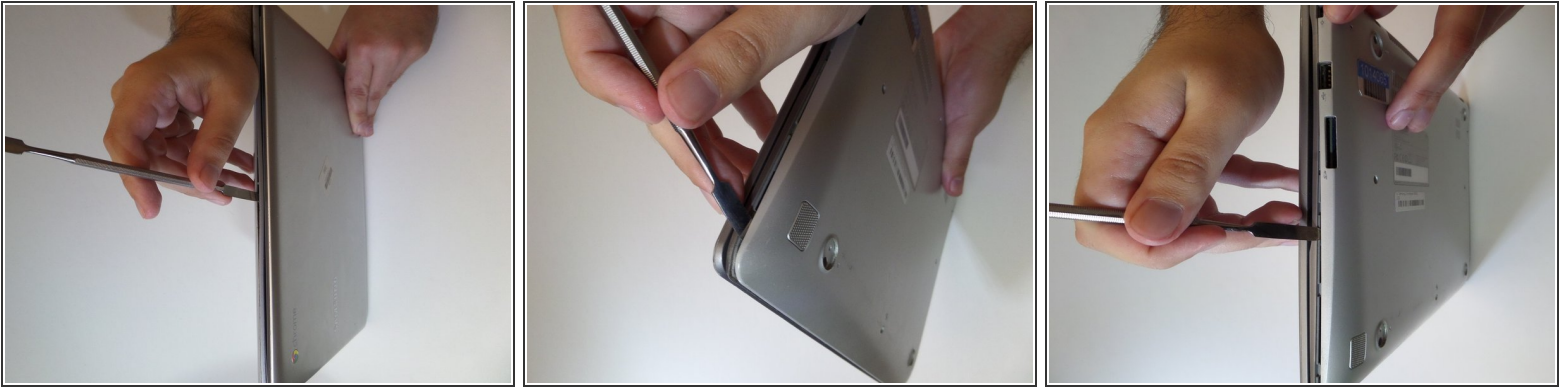
- Using the spudger, remove the four 1/2 inch skid pads from the back of the laptop.

Step 2



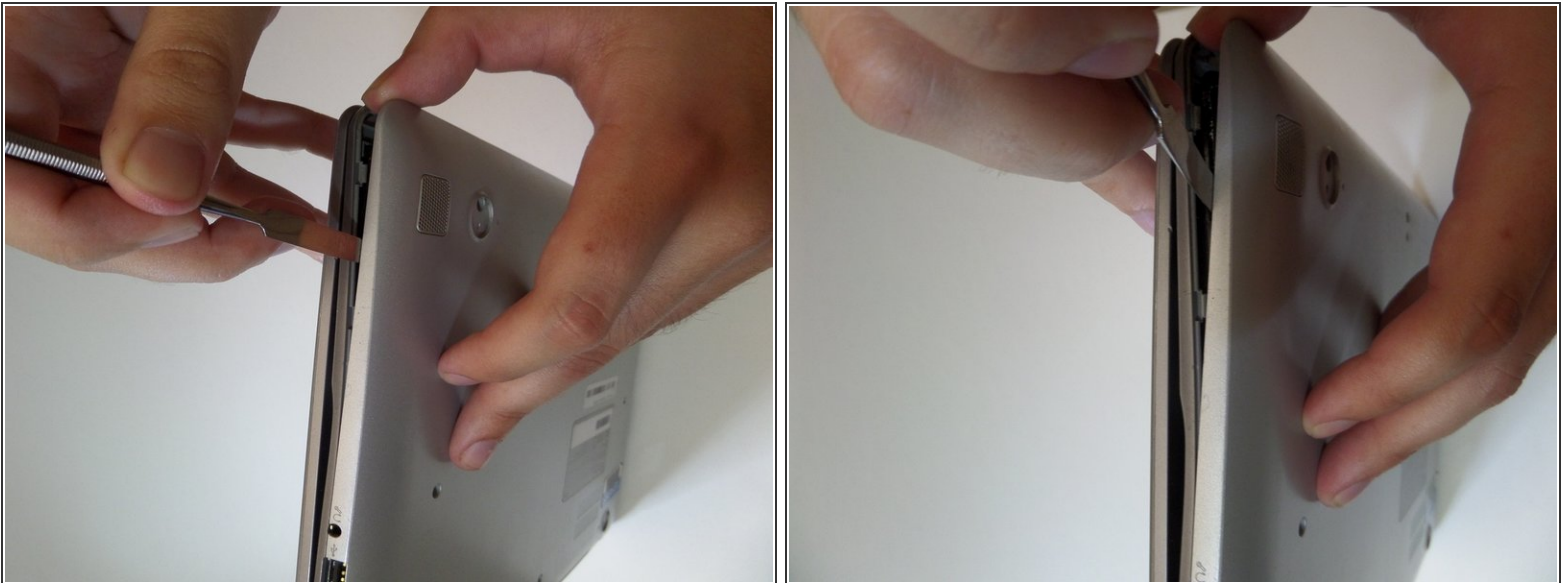
- Remove the eight 7mm screws using the J0 Screwdriver.

Step 3



- Starting at the center front of the laptop, insert the metal spudger between the keyboard panel and the bottom panel, separating the bottom panel from the laptop.
- Continue prying around the sides to release more brackets.

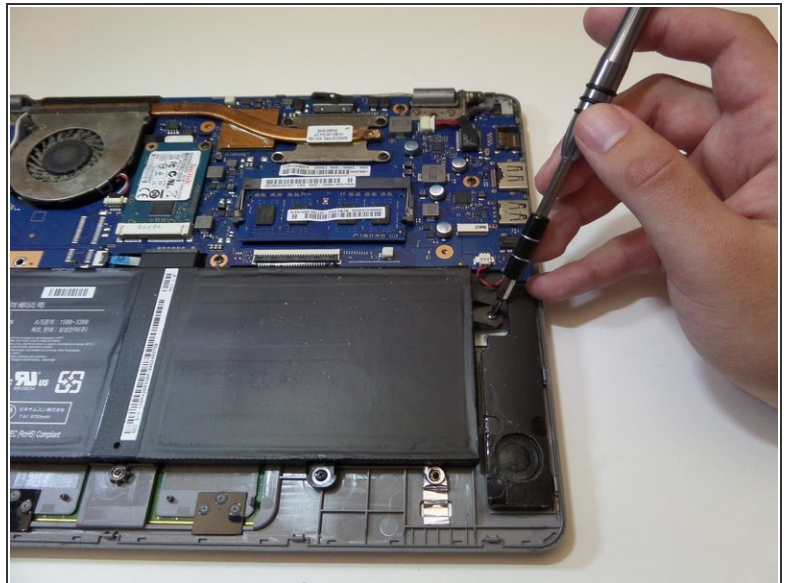
Step 4



- After disconnecting all the brackets, pull the back panel away from the laptop.

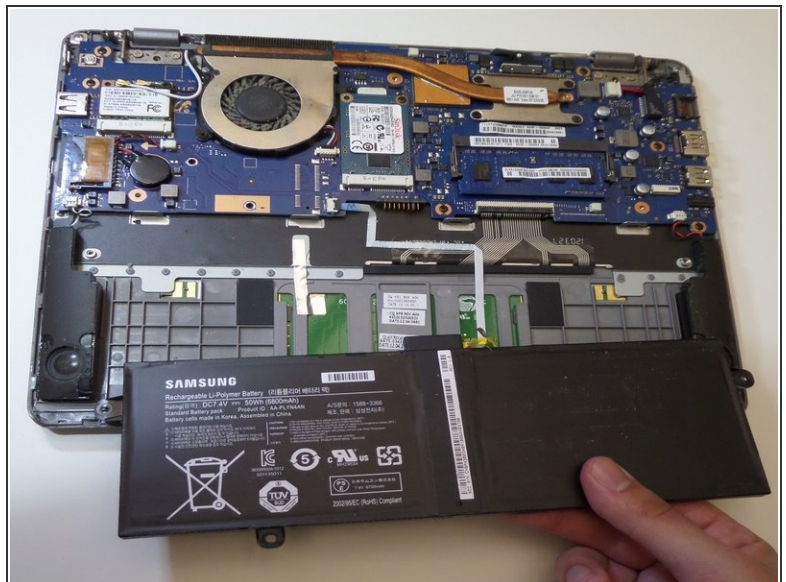
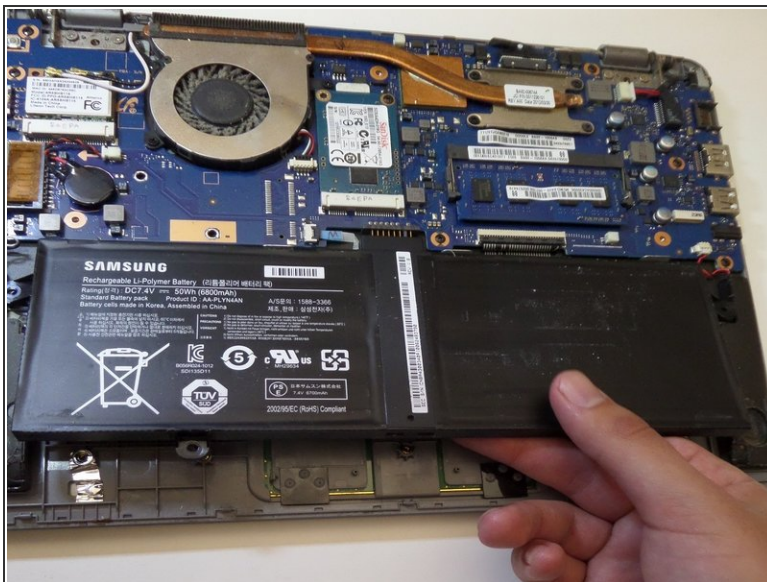
i Note: The back panel has some flex to it, don't be afraid to use some force.

Step 5 — Battery



- Remove the four 3mm screws holding the battery with the J0 screwdriver.

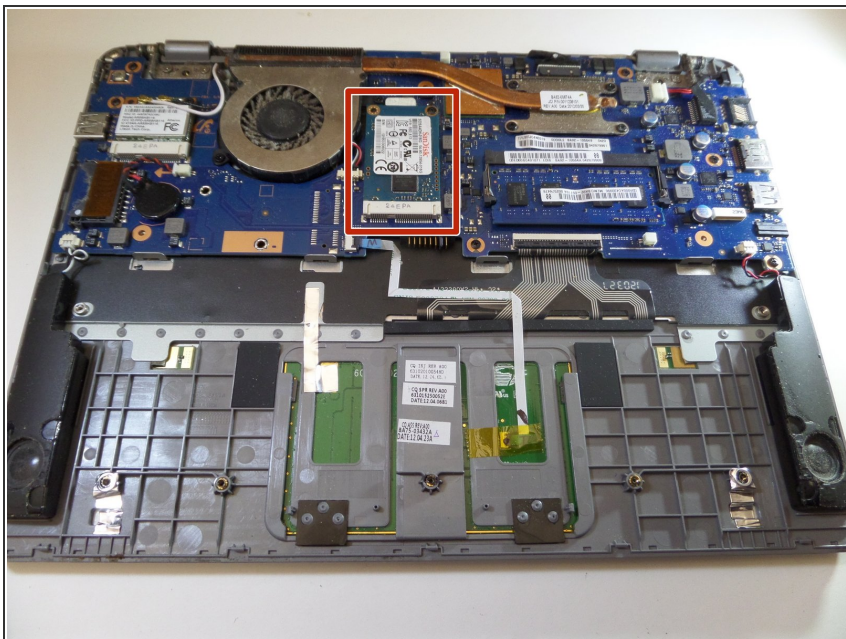
Step 6



- Lift the battery up at an angle to disconnect the battery from the motherboard, then pull it away from the laptop.

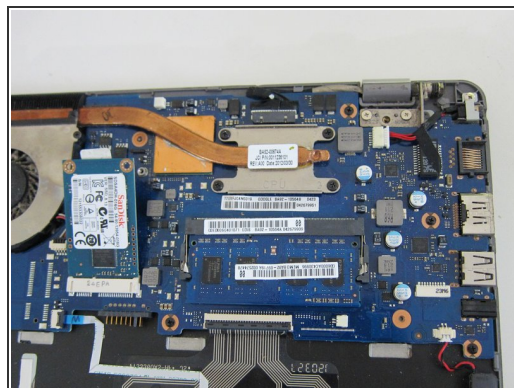
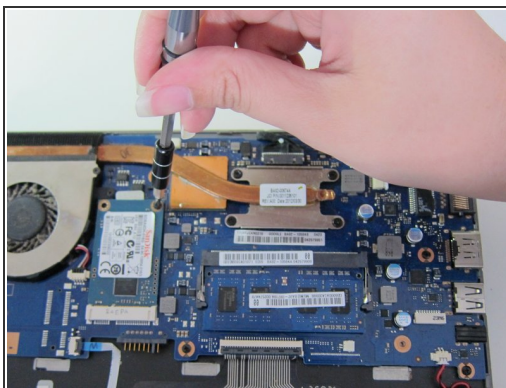
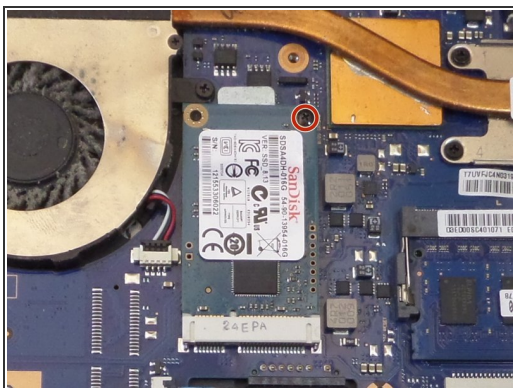
⚠ Do not lift the battery straight up. This will damage the battery's connectors.

Step 7 — SSD



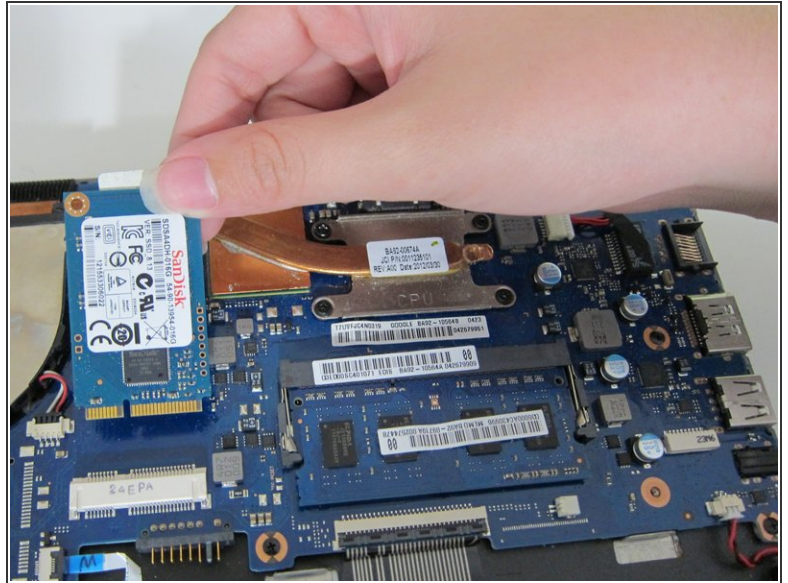
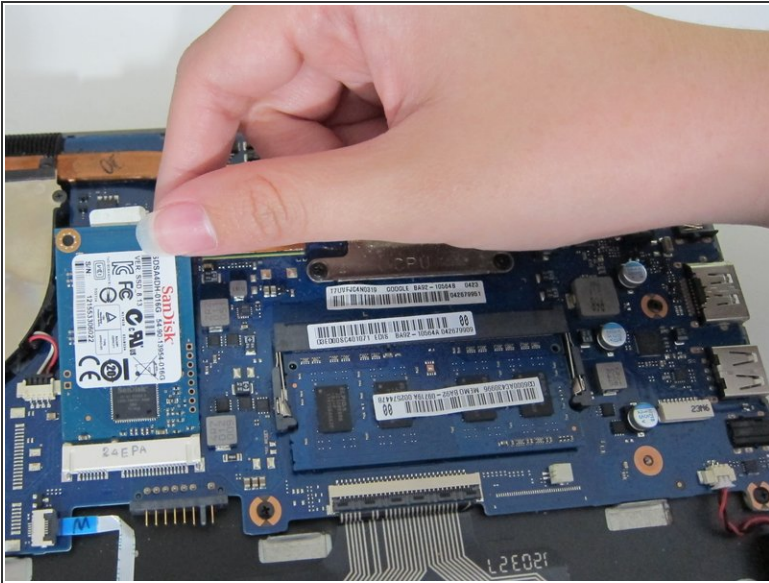
- Locate the SSD in the center of the Chromebook.

Step 8



- Remove the single 3.5mm screw using the J0 screwdriver.
- i The SSD should "pop-up" on its own after it's unscrewed.

Step 9



- Pull the SSD up and away from the Chromebook

To reassemble your device, follow these instructions in reverse order.