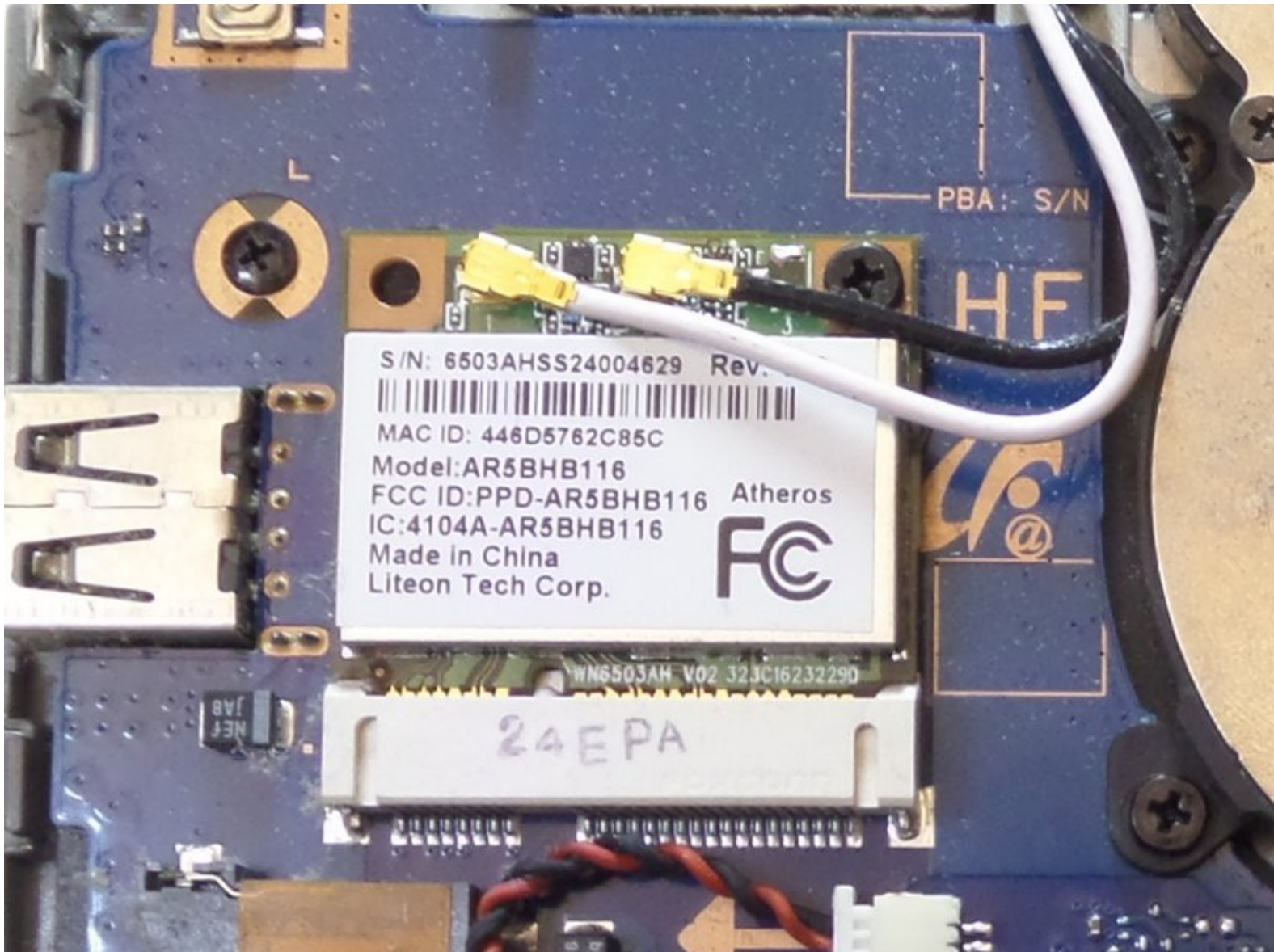




Samsung Chromebook XE550C22 Wifi Card Replacement

Replace the wifi card on a Samsung Chromebook XE550C22

Written By: Linh Luu



INTRODUCTION

This guide can be use to replace a faulty wifi card or to upgrade the wifi connection bandwidth of a Samsung Chromebook XE550C22



TOOLS:

- [Metal Spudger](#) (1)
 - [JIS #0 Screwdriver](#) (1)
 - [Spudger](#) (1)
-

Step 1 — Back Panel



⚠ Turn the power off before beginning this step.

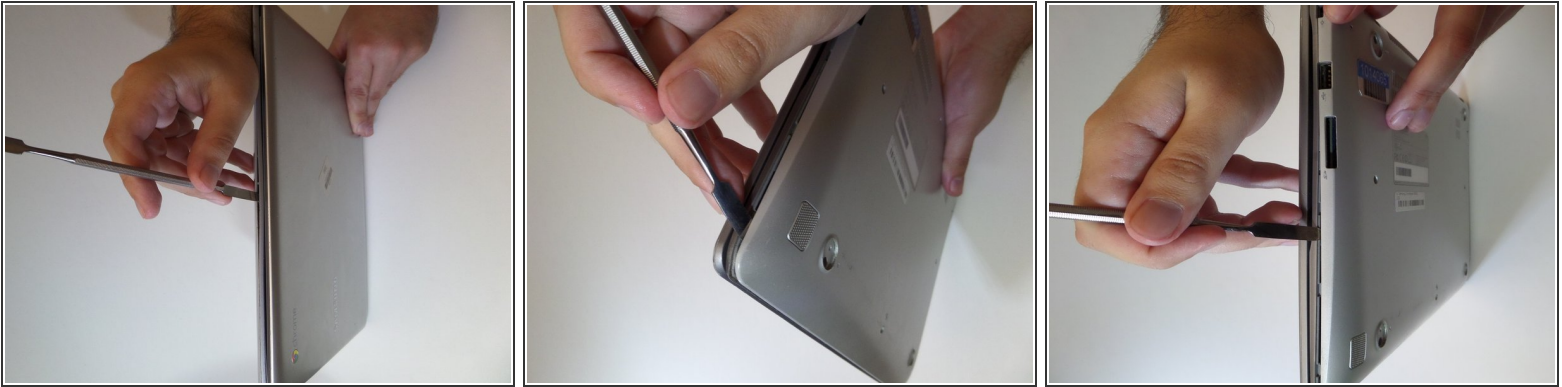
- Using the spudger, remove the four 1/2 inch skid pads from the back of the laptop.

Step 2



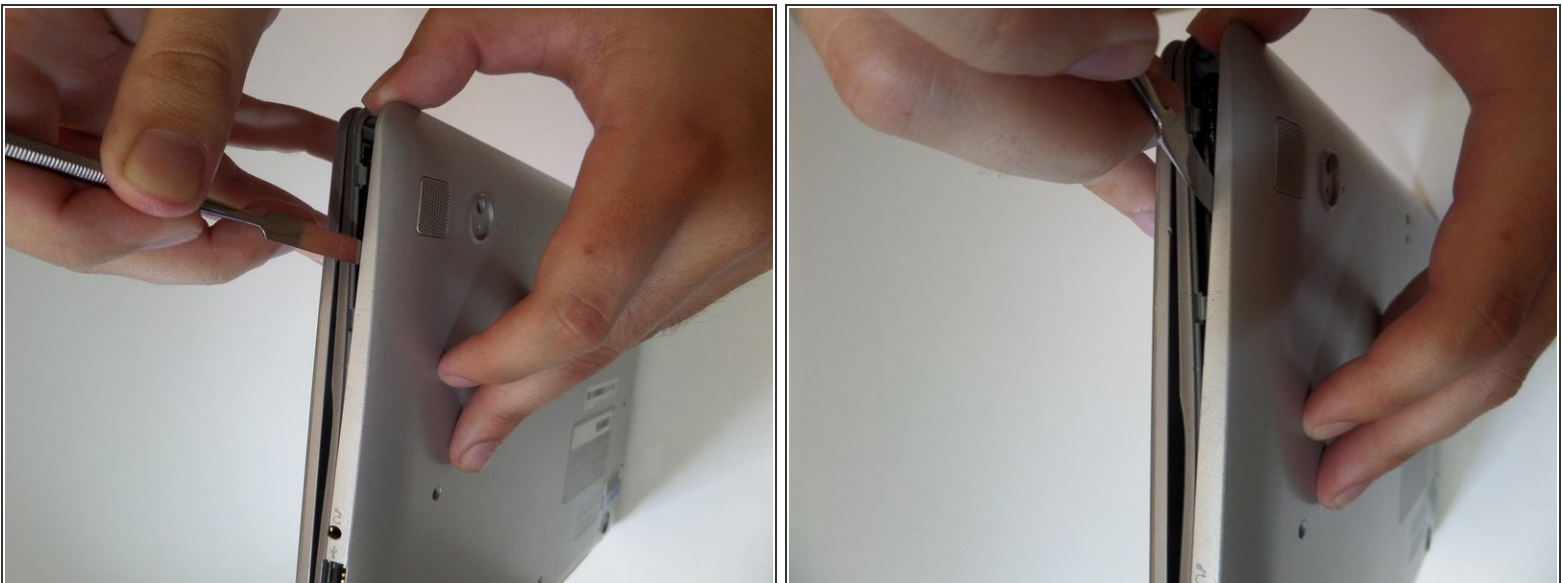
- Remove the eight 7mm screws using the J0 Screwdriver.

Step 3



- Starting at the center front of the laptop, insert the metal spudger between the keyboard panel and the bottom panel, separating the bottom panel from the laptop.
- Continue prying around the sides to release more brackets.

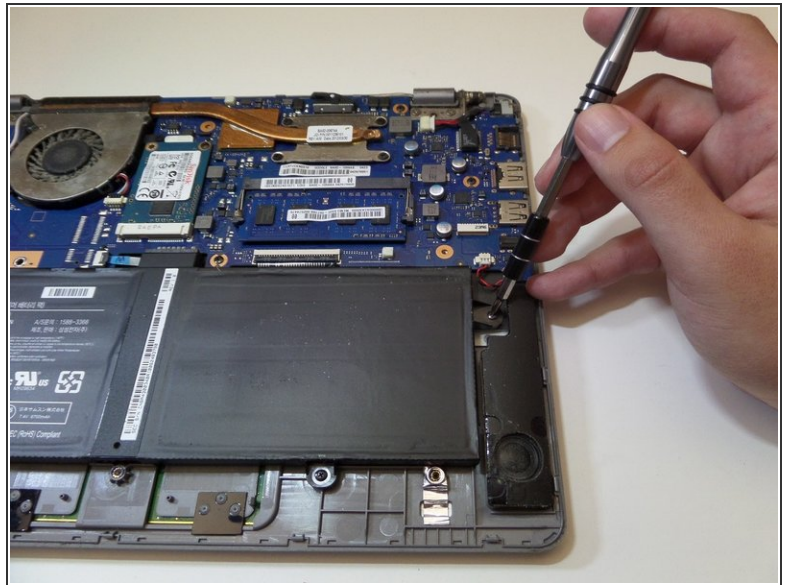
Step 4



- After disconnecting all the brackets, pull the back panel away from the laptop.

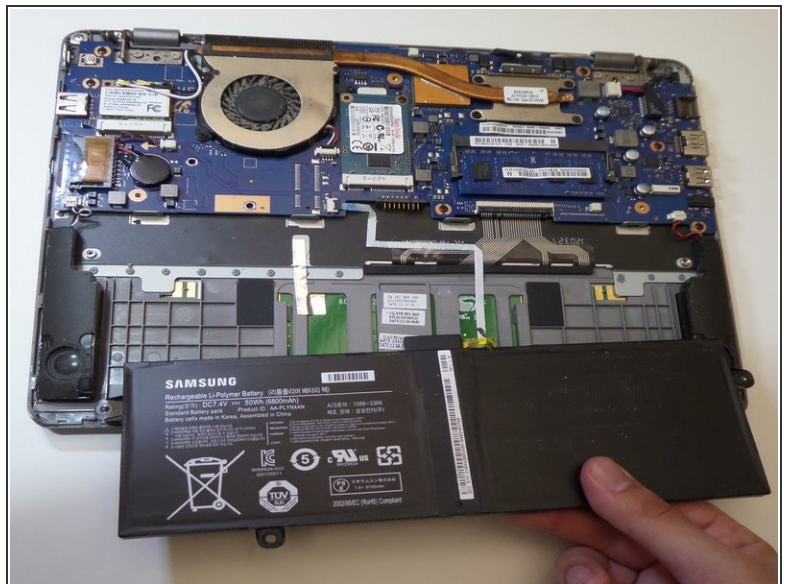
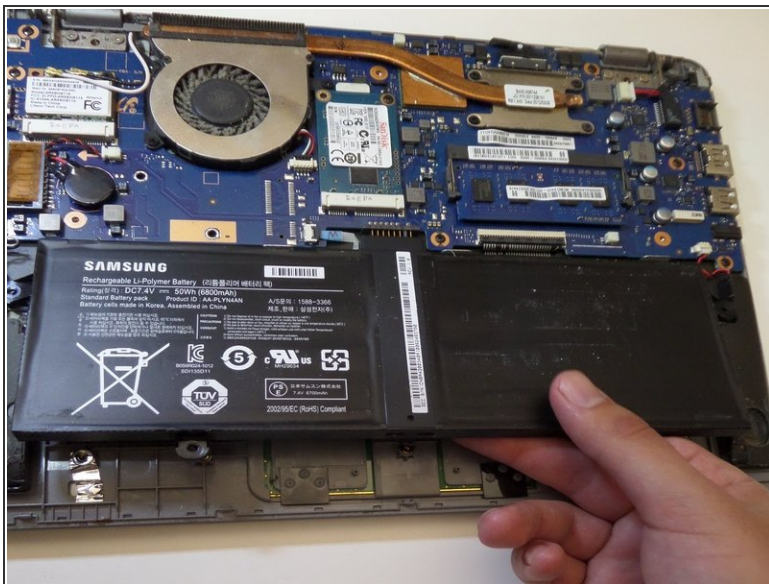
i Note: The back panel has some flex to it, don't be afraid to use some force.

Step 5 — Battery



- Remove the four 3mm screws holding the battery with the J0 screwdriver.

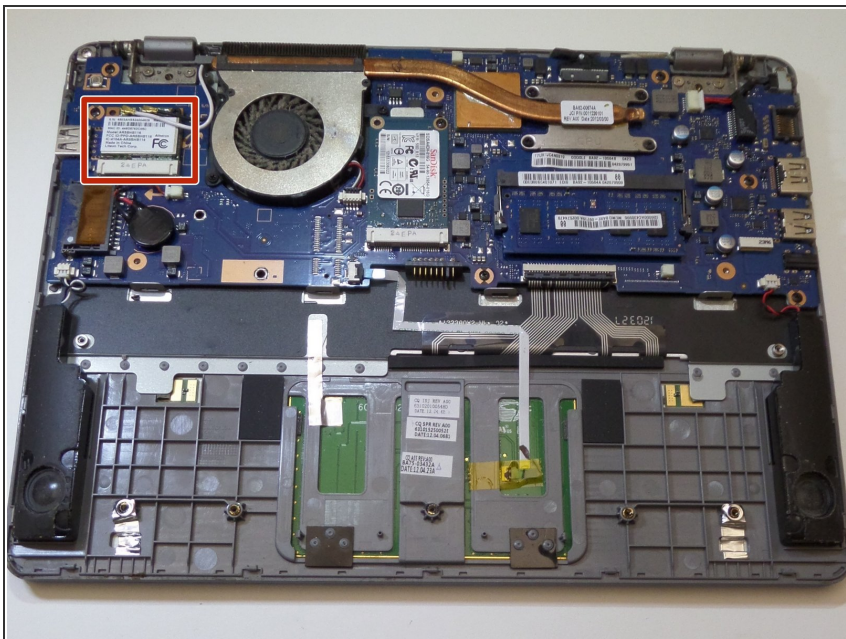
Step 6



- Lift the battery up at an angle to disconnect the battery from the motherboard, then pull it away from the laptop.

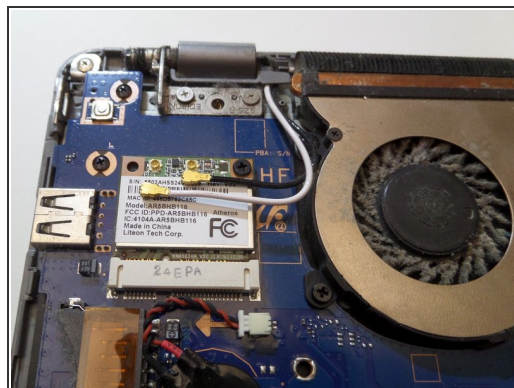
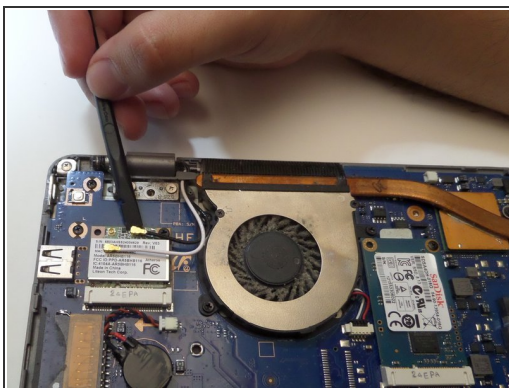
⚠ Do not lift the battery straight up. This will damage the battery's connectors.

Step 7 — Wifi Card



- Locate the wifi card on the top left of the Chromebook.

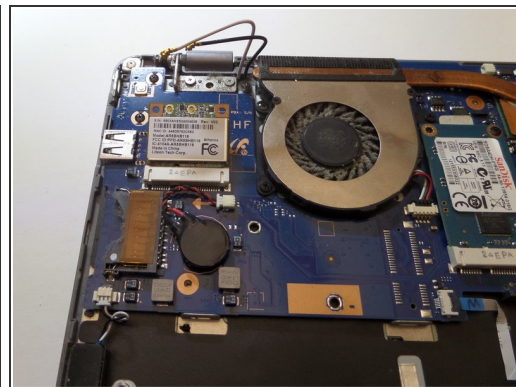
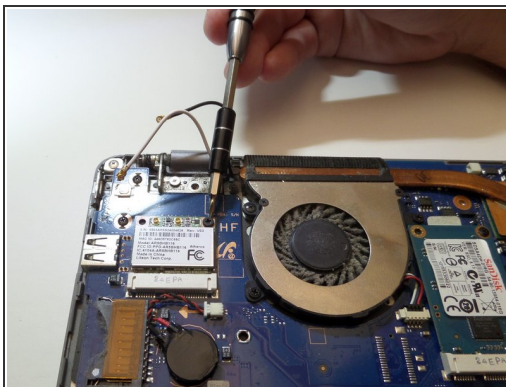
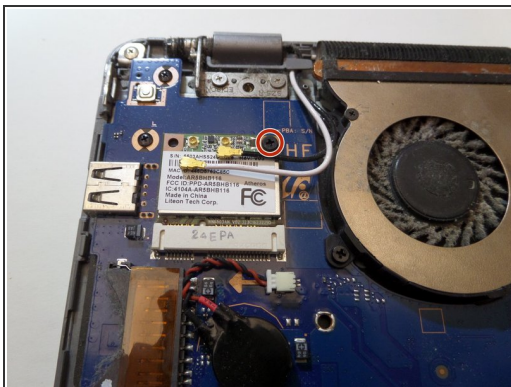
Step 8



⚠ Use only plastic tools for this step.

- Use the spudger to detach the black and white cords from the wifi card.

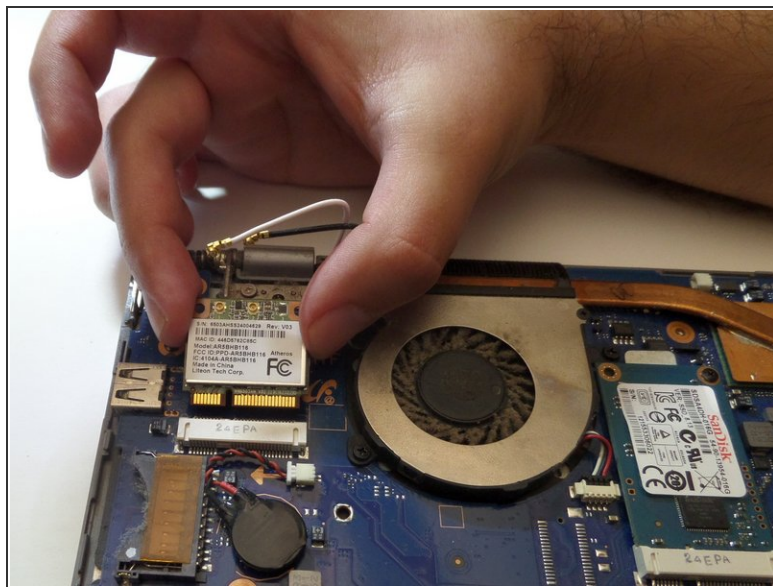
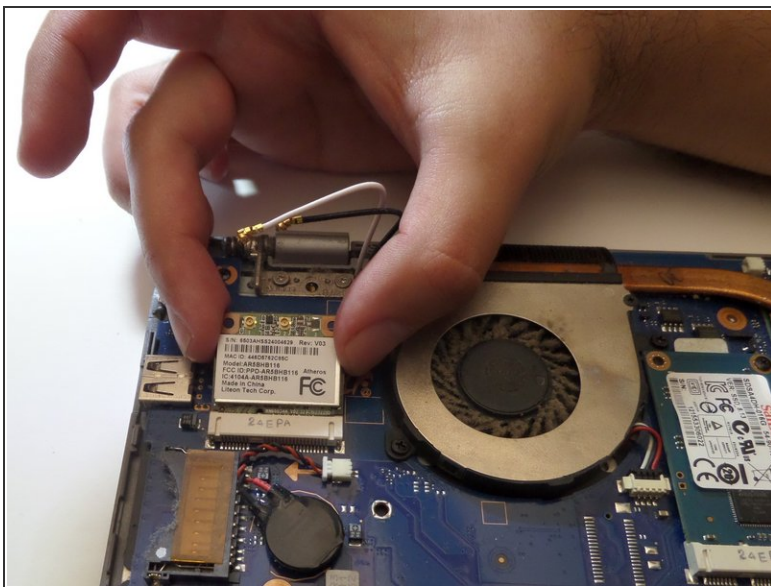
Step 9



- Remove the 6mm screw from the top right corner of the card using the J0 screwdriver.

i The wifi card will "pop-up".

Step 10



- Using your hands, gently remove the card up and away from the Chromebook.

To reassemble your device, follow these instructions in reverse order.