



# Samsung DV300F Front LCD Screen Replacement

This is a replacement guide for the Front LCD Screen of the Samsung DV300F.

Written By: Timothy Gordon



---

## INTRODUCTION

This guide describes how to replace the Samsung DV300F front LCD screen. There are many small screws involved with this process.

If your Samsung DV300F is displaying black spots, discolored areas, or blurred sections , it is time to replace the LCD screen.



### TOOLS:

- [Phillips #0 Screwdriver](#) (1)
-

## Step 1 — Front and Rear Casing



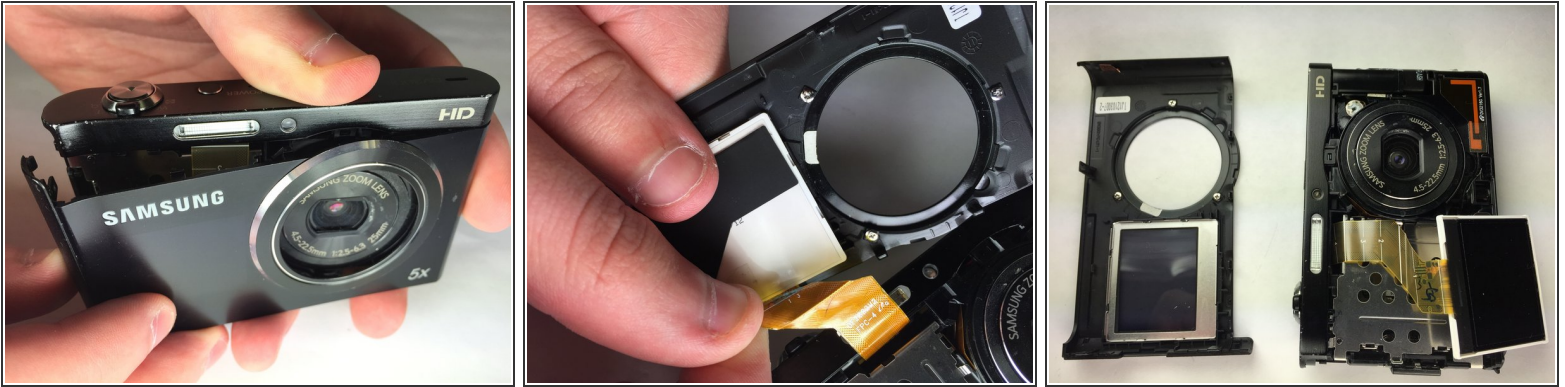
- Remove the two black 4.2 mm screws on the right side of the camera using a Phillips #0 screwdriver.
- Remove the two black 4.2 mm screws on the left side of the camera using a Phillips #0 screwdriver.
- Remove the two black 4.2 mm screws on the bottom of the camera using a Phillips #0 screwdriver.

## Step 2



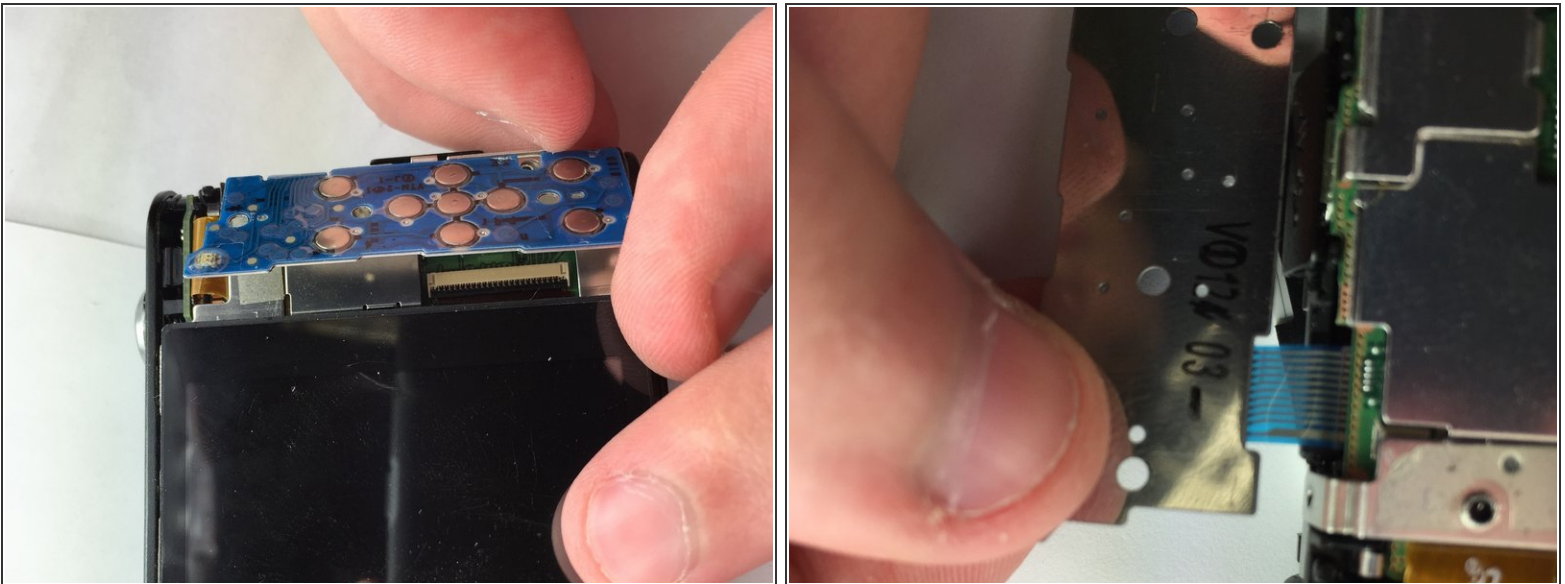
- Remove the back case of the camera carefully.

### Step 3



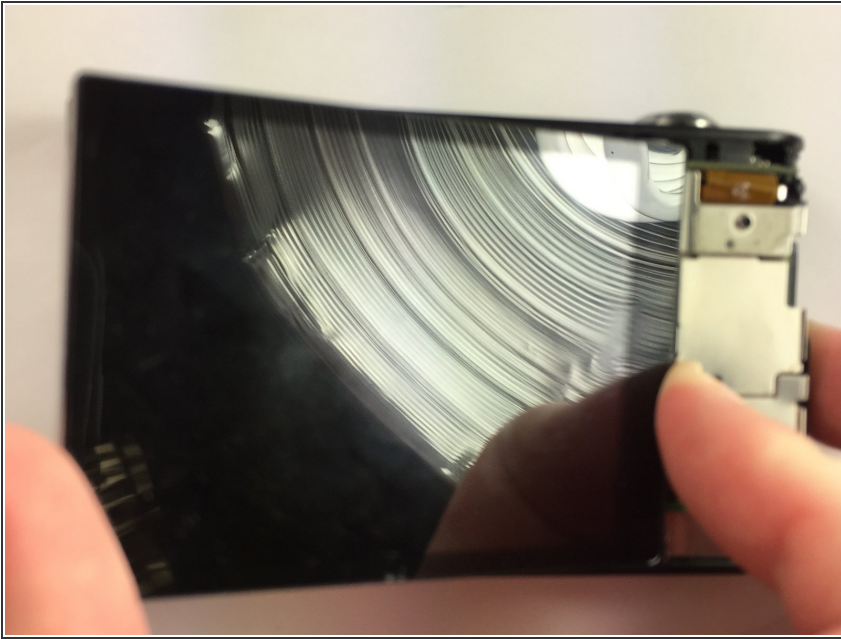
- Remove the front case of the camera.
- Remove the front LCD screen from the front case next to the lens.

### Step 4 — Back Button Control



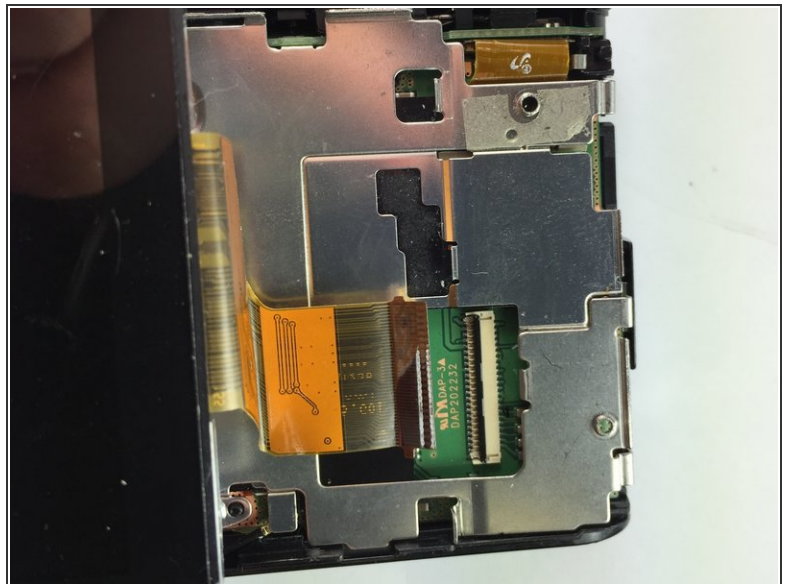
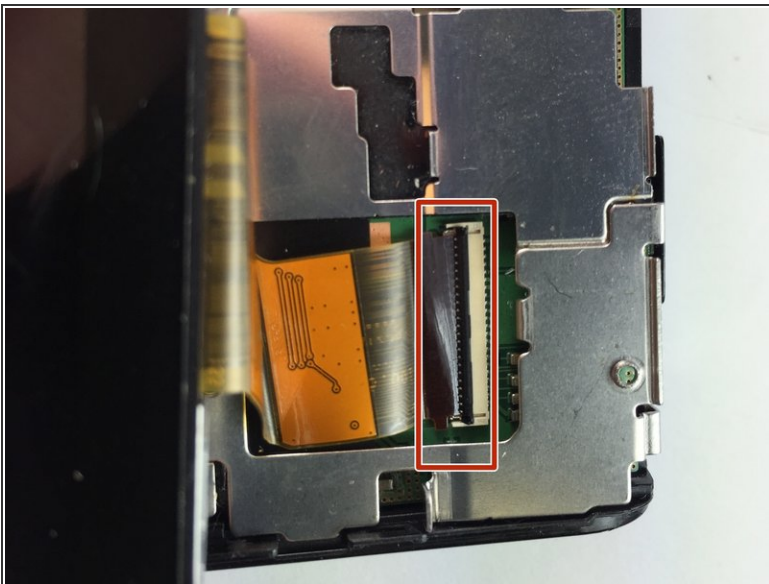
- Remove the blue button control from its position next to the LCD screen.
- Pull the ribbon cable to disconnect the blue button control from the camera.

## Step 5 — Back LCD Screen



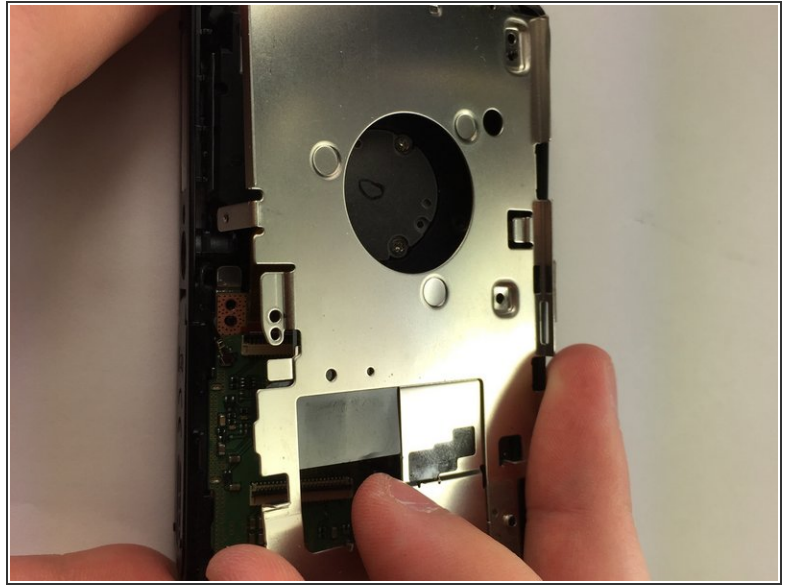
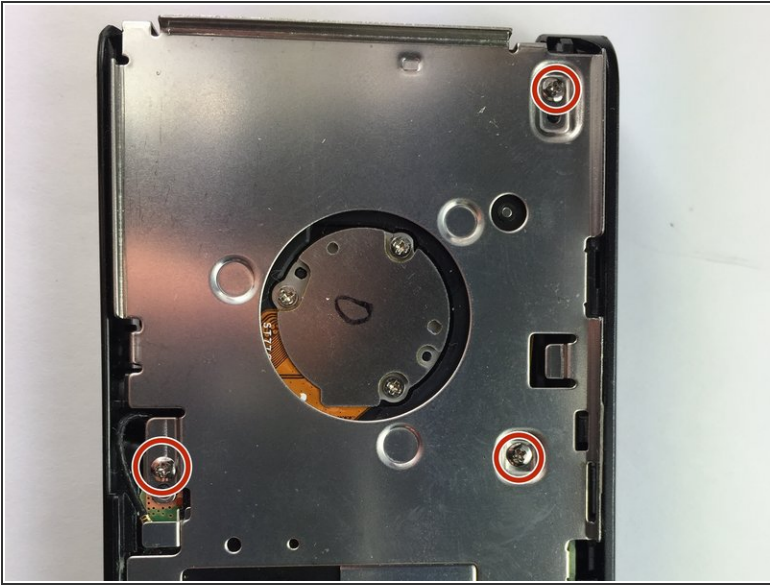
- Remove the back LCD screen from its place carefully.

## Step 6



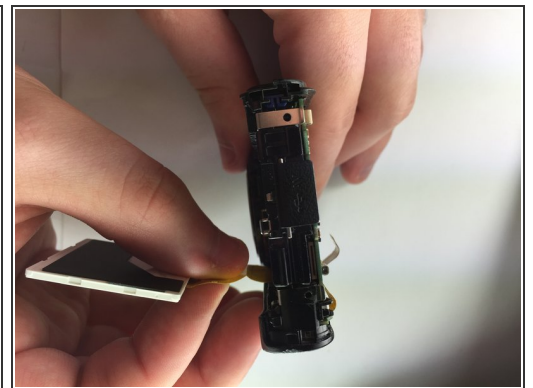
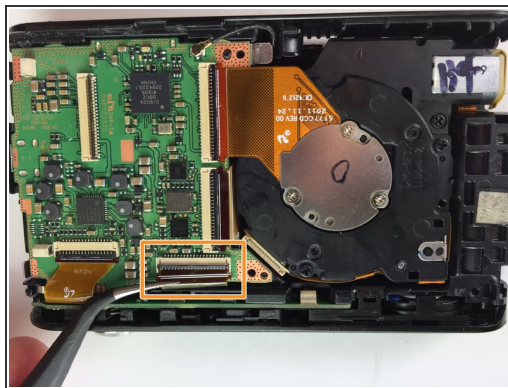
- Flip the black tab where the back LCD screen connects to the circuit board.
- Pull the tape connection to disconnect the back LCD screen from the circuit board.

## Step 7 — Front LCD Screen



- Unscrew the 3 silver 4.5 mm screws from the circuit board using a Phillips #0 screwdriver.
- Remove the circuit board cover.

## Step 8



- Flip the black tab where the front LCD screen connects to the circuit board.
- Pull the tape connection to disconnect the front LCD screen from the circuit board.
  - ⓘ You can do this easily with your fingers.
- Remove the front LCD screen from the front of the camera.

To reassemble your device, follow these instructions in reverse order.