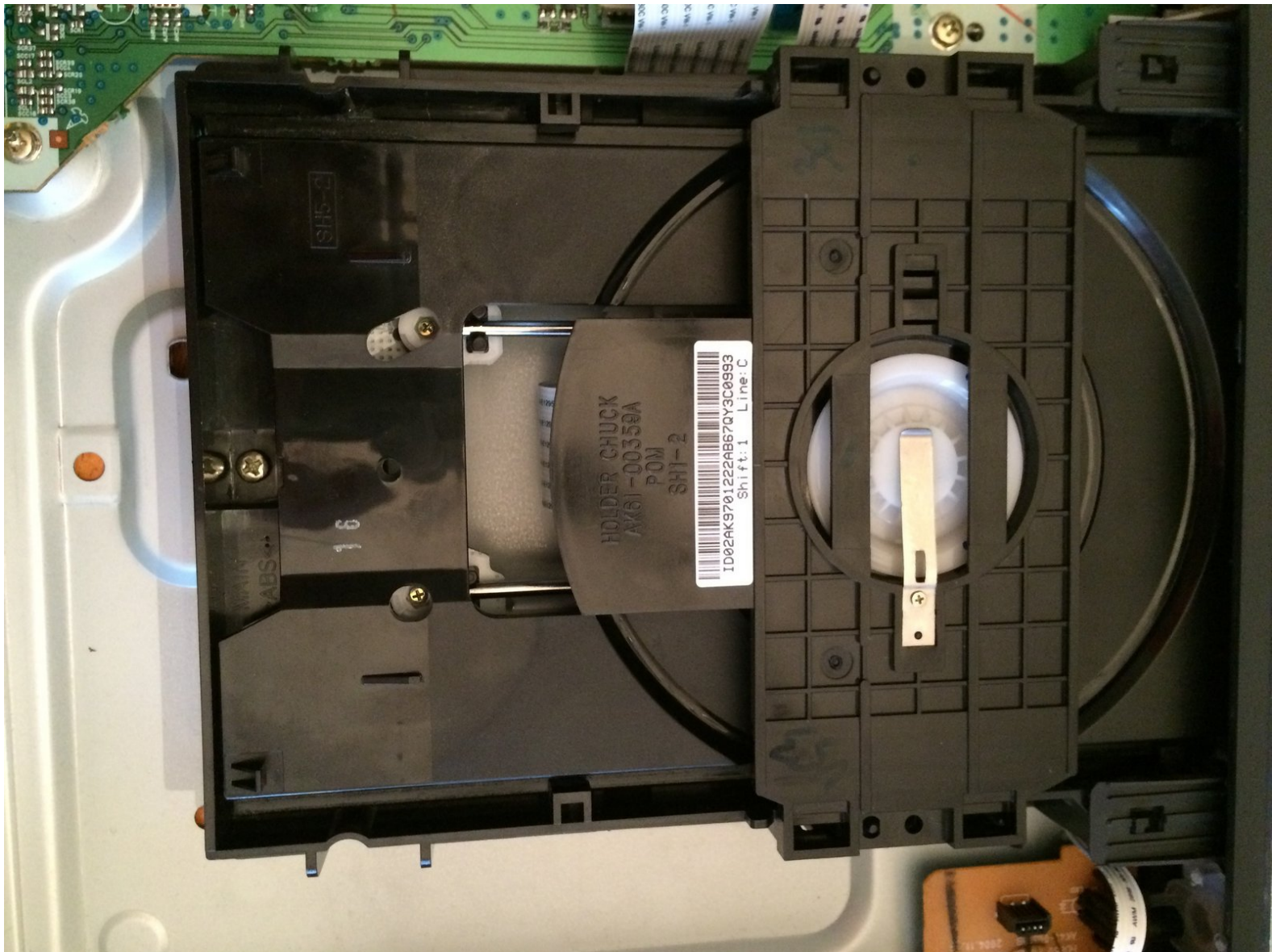




Samsung DVD-HD850 Player Disk Tray Replacement

This guide shall assist you in fixing a jammed disk tray if you followed thoroughly the troubleshooting steps with no positive results.

Written By: Carlos



This document was generated on 2019-09-23 08:58:07 AM (MST).

INTRODUCTION

Caution: All alteration or modifications are the users responsibility, and not of the guide creator. These steps are only recommended if not under warranty or if a solution has not yet been found.

TOOLS:

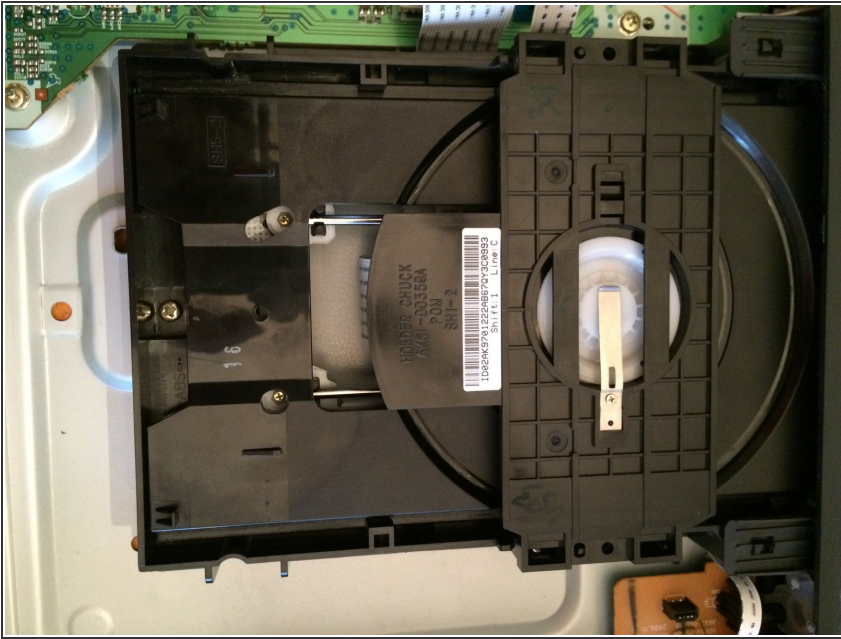
- [Magnetic Project Mat](#) (1)


Or something similar, It is not neccesary but its recommened to organize/safe your screws and other objects of similar nature

- [Phillips #1 Screwdriver](#) (1)

Or some of similar nature

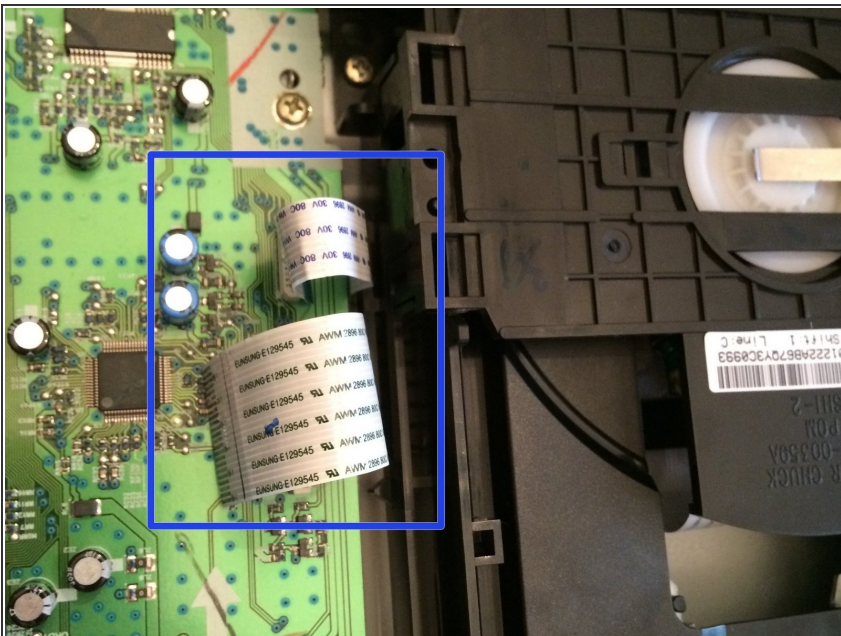
Step 1 — Locate and Remove The Disk Tray



 ***NOTE*** remember to never connect to power when working on electrical components

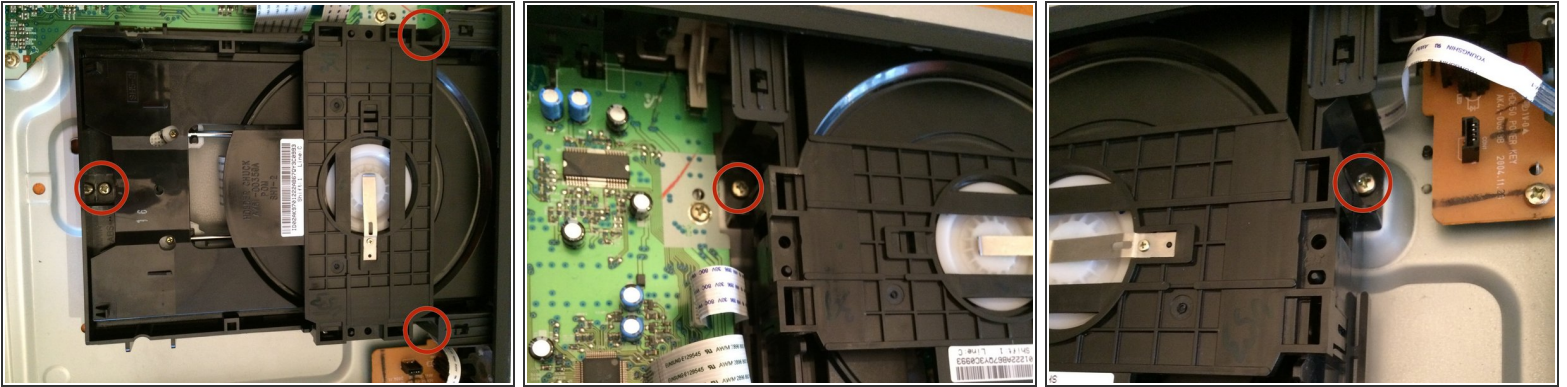
- Find and locate the disk tray it is located top right hand side of the component when the back of the device (dvd player) is facing you.

Step 2 — Removing The Data Strips



- Locate and gently remove the data strips on the tray. There are three in total, two on the left hand side and one on the right.

Step 3 — Removing The Screws



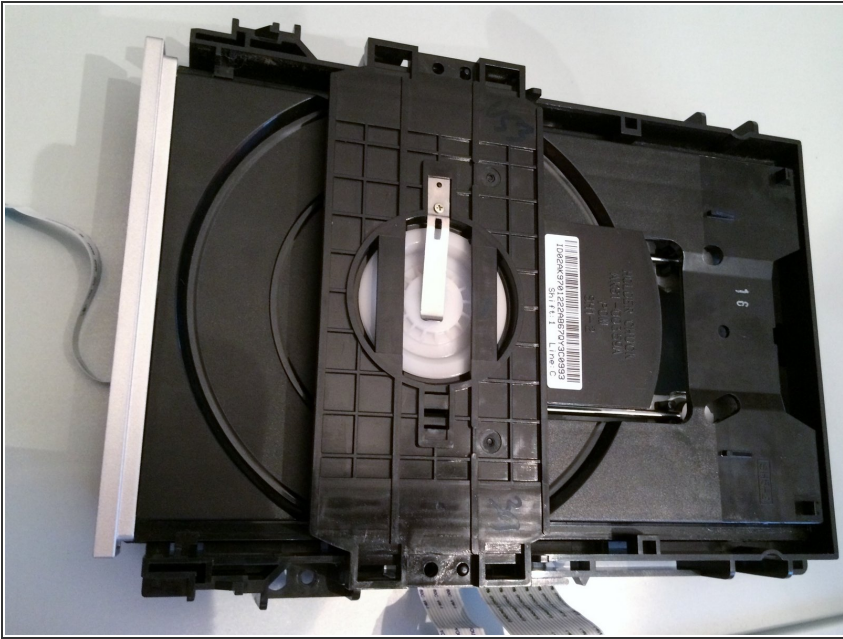
- As noted by the red circles, locate and remove the screws one at a time

Step 4 — Disk Tray Removal



- After removing the clips slowly incline the disk drive towards you and unclip it from the two (2) brackets located on the top
- ☑ Be careful not to push too much pressure on the brackets since they tend to break easily

Step 5 — Success!



- Congrats! You have successfully taken out the disk drive

To reassemble your device, follow these instructions in reverse order.