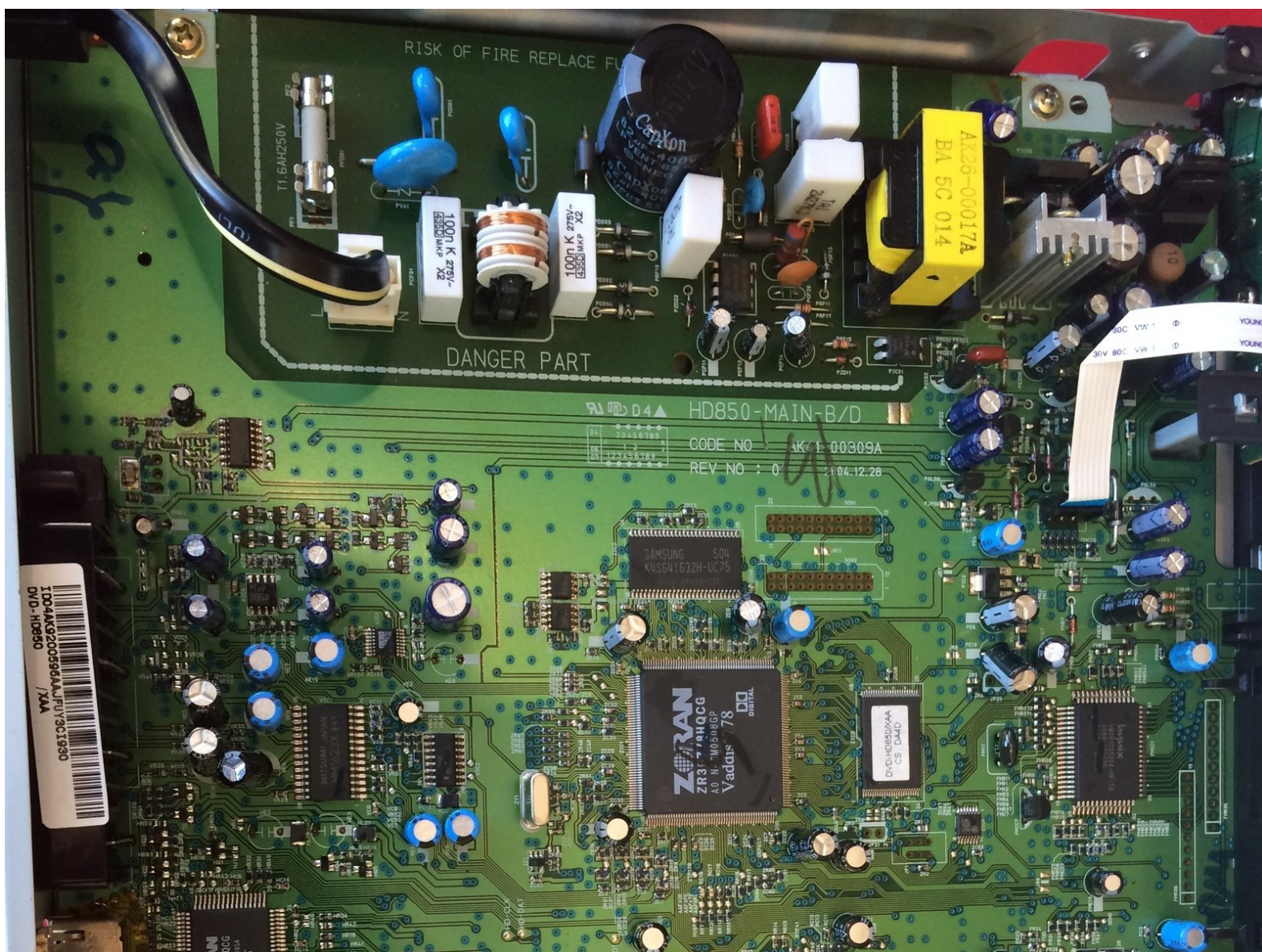




Samsung DVD-HD850 Player Fuse Replacement

This guide will help solve the problem of a lack of power coming from the circuit board of your Samsung DVD-HD850

Written By: Devon Clements



This document was generated on 2019-09-23 02:48:43 PM (MST).

INTRODUCTION

This guide will take you through the step-by-step process on how to gain power back in your device by replacing the power fuse on the circuit board inside the device



TOOLS:

- [Phillips #1 Screwdriver](#) (1)



PARTS:

- [power fuse T1.6AL250v](#) (1)

Step 1 — Cover



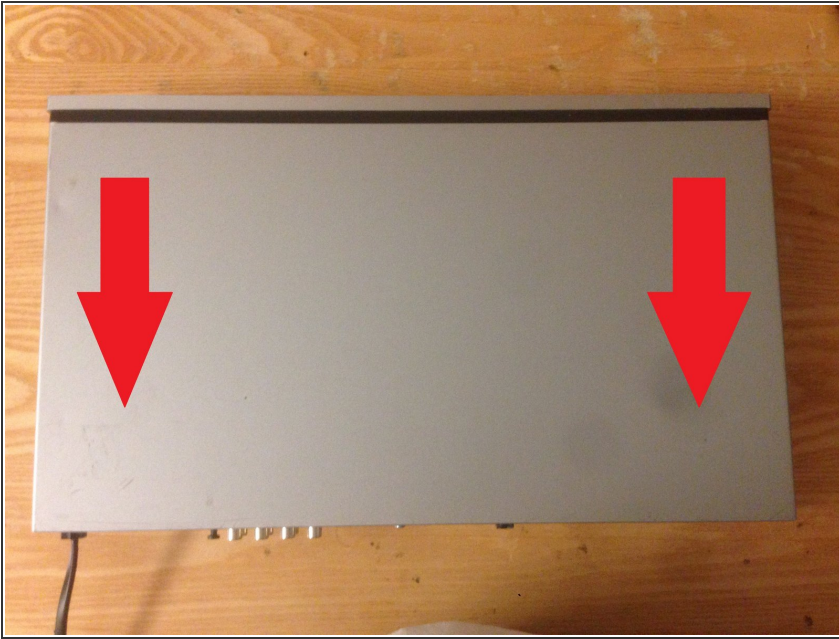
- with the front of the device facing you, turn the device 180 degrees so the back panel of the device is facing you

Step 2 — Locate and remove screws



- locate the three (3) screws on the back panel of the device that are implanted in the device
- to remove the screws, use the tool(s) listed above (right underneath the introduction) and twist the screws counter-clockwise to remove them from the device

Step 3 — Remove Cover



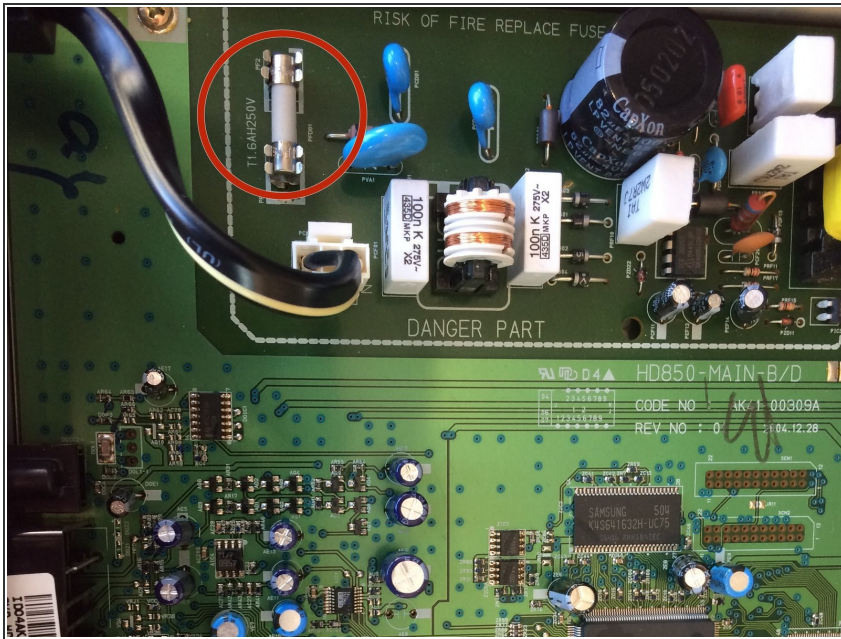
- to remove the cover of the device, pull the cover towards the back of the device until it is completely removed so you can see the insides of the device

Step 4 — Locate the Circuit Board



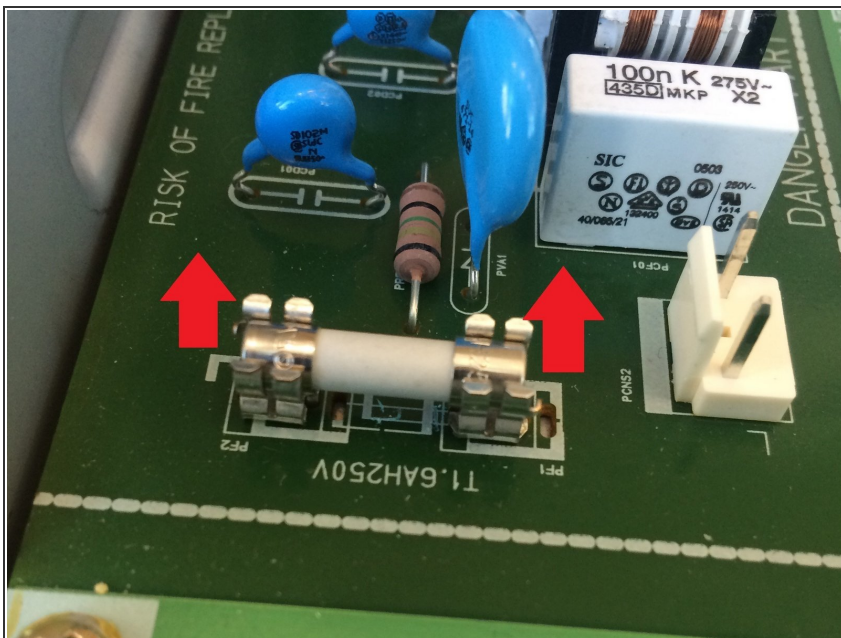
- ⚠ Make sure your device is unplugged before you try to do the following steps to avoid electrocution
- It is recommended to buy the new power fuse before proceeding with this guide. To buy a power fuse online you can click on the name of the fuse under the "relevant parts" section on the top of this page and it will guide you to a website to buy one
- With the back panel of the device facing towards you, locate the circuit board inside the device

Step 5 — Locate the Power Fuse



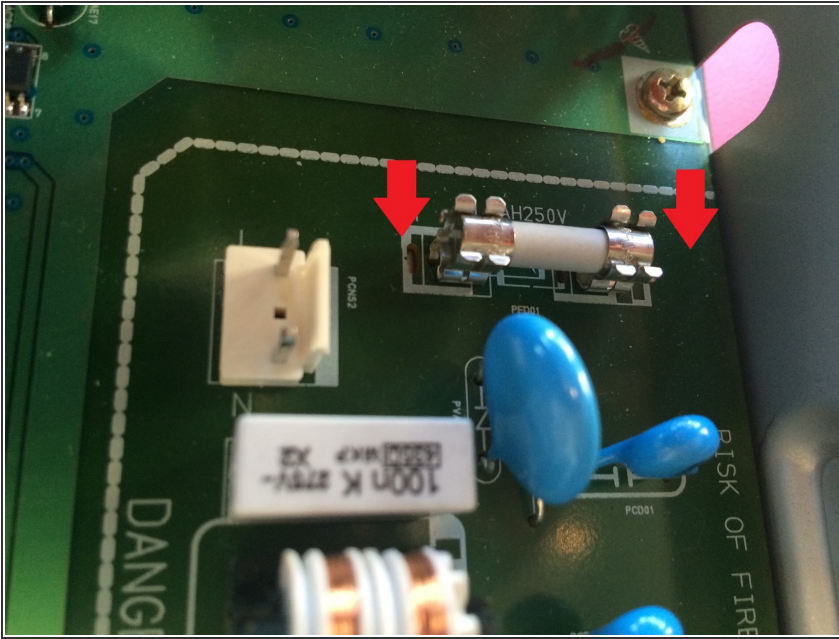
- Locate the power fuse on the bottom left of the circuit board

Step 6 — Remove the Power Fuse




- To Remove the power fuse from the circuit board, gently pull up on the fuse to remove it from the metal clips
- ⓘ The power fuse is very delicate so do not put much force into pulling it from the clips

Step 7 — Insert the new Power Fuse



- After removing the old power fuse, put in the new fuse by gently pushing the fuse into the metal clips until it clicks into place
- The best way to put the new fuse in is by grabbing both ends of the fuse and pushing it in from the ends. Avoid pushing it in from the middle of the fuse to prevent it from breaking
- If done correctly you should now have full power back in your device!

 Do not try to power the device on before reassembling the device first

To reassemble your device, follow these instructions in reverse order.