



Samsung DVD-HD850 Player Power Cord Replacement

This guide shall assist you in replacing your power cord if you followed thoroughly the troubleshooting steps with no positive results.

Written By: Robert Moss



INTRODUCTION

Caution: All alteration or modifications are the users responsibility, and not of the guide creator. These steps are only recommended if not under warranty or if a solution has not yet been found.



TOOLS:

- [Phillips #0 Screwdriver](#) (1)



PARTS:

- [Replacement Power Cord](#) (1)

Step 1 — Cover



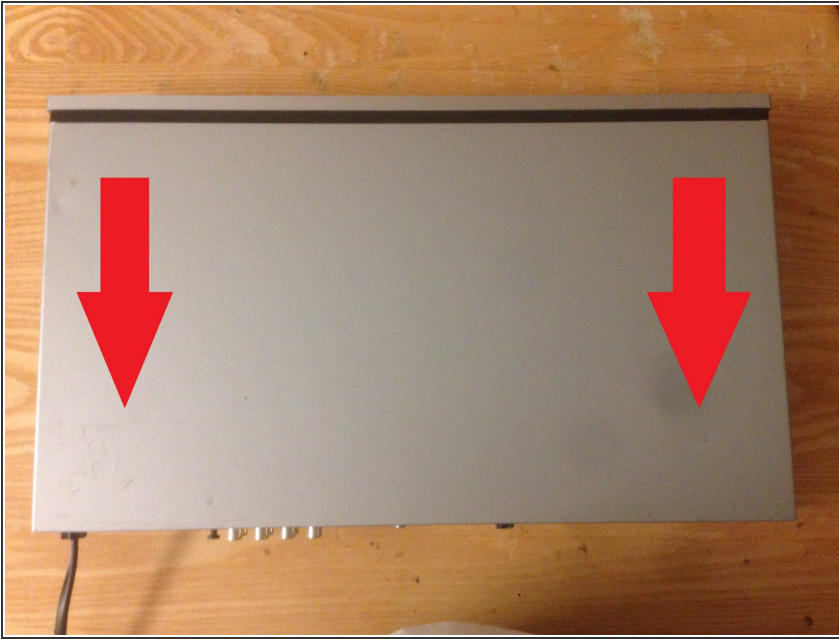
- with the front of the device facing you, turn the device 180 degrees so the back panel of the device is facing you

Step 2 — Locate and remove screws



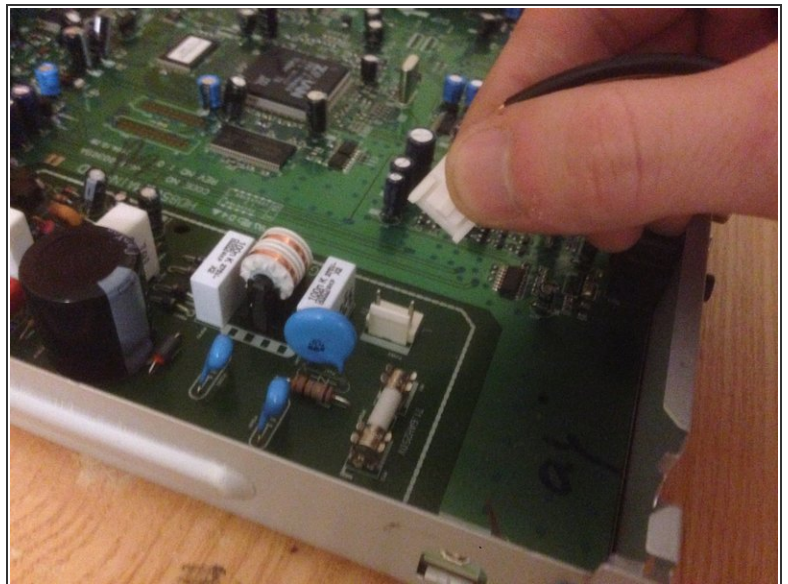
- locate the three (3) screws on the back panel of the device that are implanted in the device
- to remove the screws, use the tool(s) listed above (right underneath the introduction) and twist the screws counter-clockwise to remove them from the device

Step 3 — Remove Cover



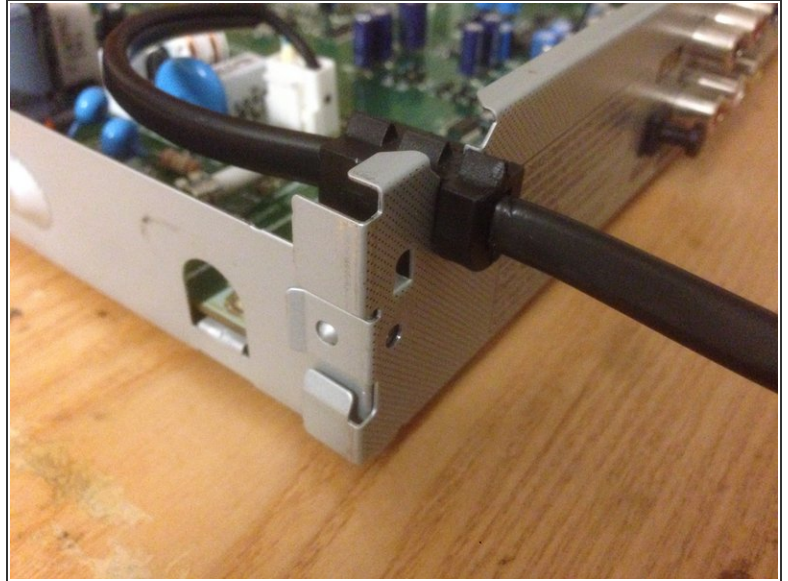
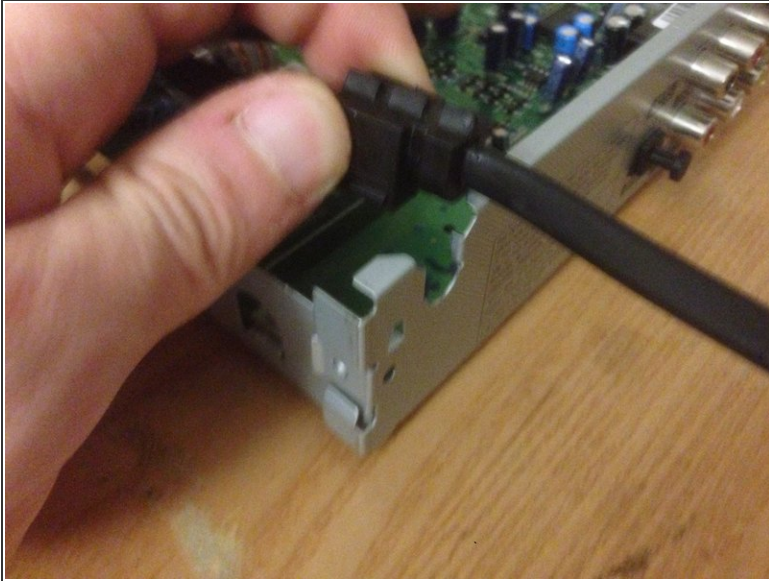
- to remove the cover of the device, pull the cover towards the back of the device until it is completely removed so you can see the insides of the device

Step 4 — Replacing the power cord



- Unclip the old power cord from the dual pin connector.
- Once the old power cord has been unclipped take the new power cord and simply clip it in where the old one was.

Step 5 — Adjust the wire



- Adjust the rubber block on the power cord so that it fits in the slot on the back of the DVD player.
- This makes it so that the cover panel will be able to slide back on.

To reassemble your device, follow these instructions in reverse order.