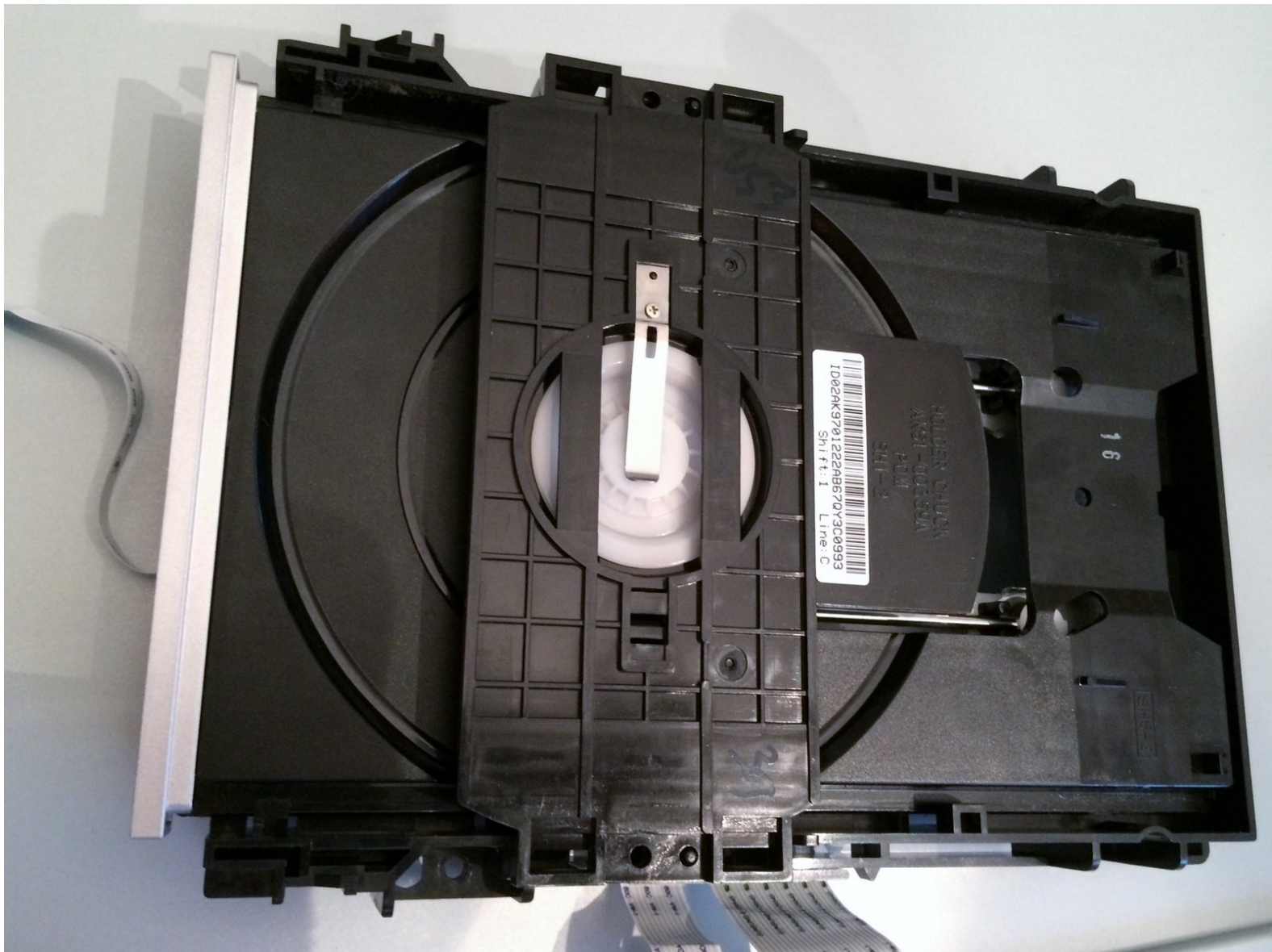




Samsung DVD-HD850 Player Rubber Band Replacement

This Guide is to help you replace the rubber band, which is one of the most common problems regarding the disk tray from opening.

Written By: Carlos





TOOLS:

- [Pro Tech Toolkit](#) (1)
- [Magnetic Project Mat](#) (1)
- [Phillips #1 Screwdriver](#) (1)

Step 1 — Cover



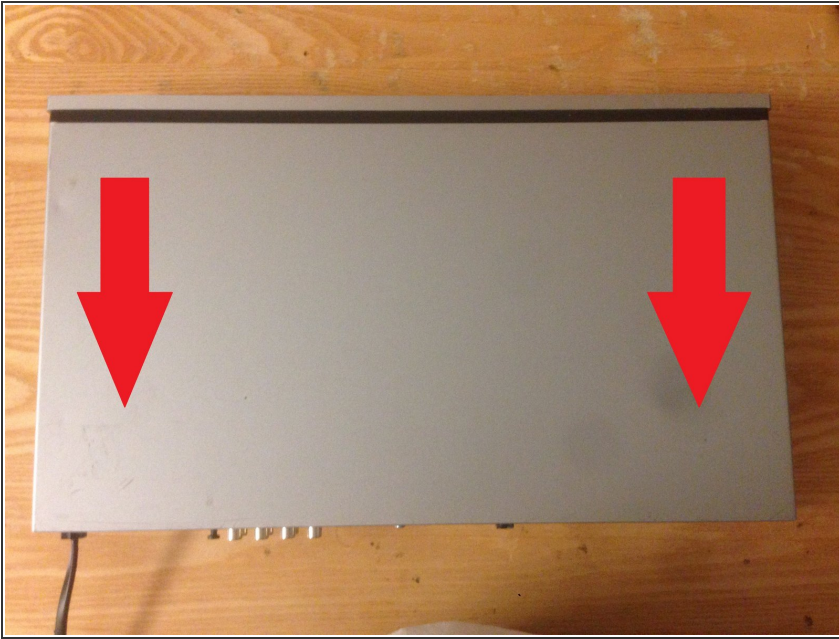
- with the front of the device facing you, turn the device 180 degrees so the back panel of the device is facing you

Step 2 — Locate and remove screws



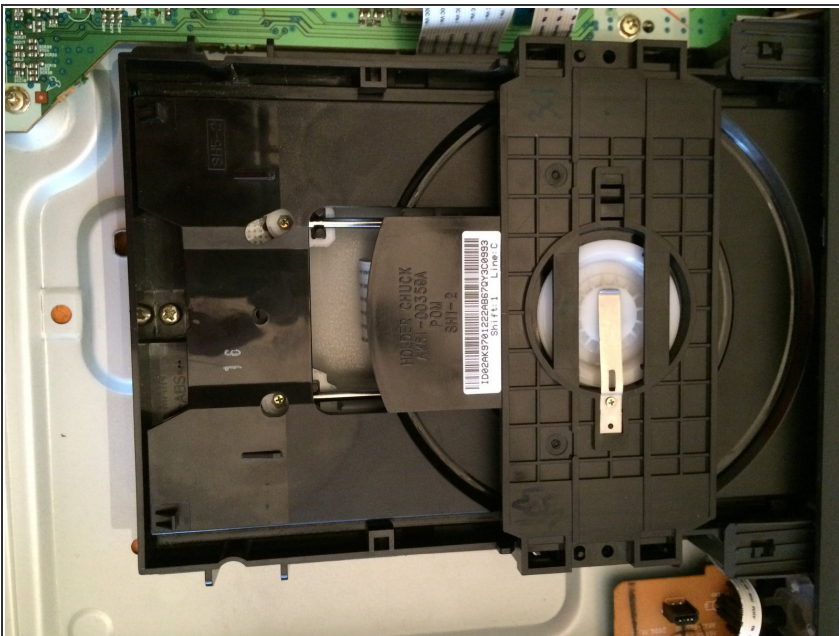
- locate the three (3) screws on the back panel of the device that are implanted in the device
- to remove the screws, use the tool(s) listed above (right underneath the introduction) and twist the screws counter-clockwise to remove them from the device

Step 3 — Remove Cover



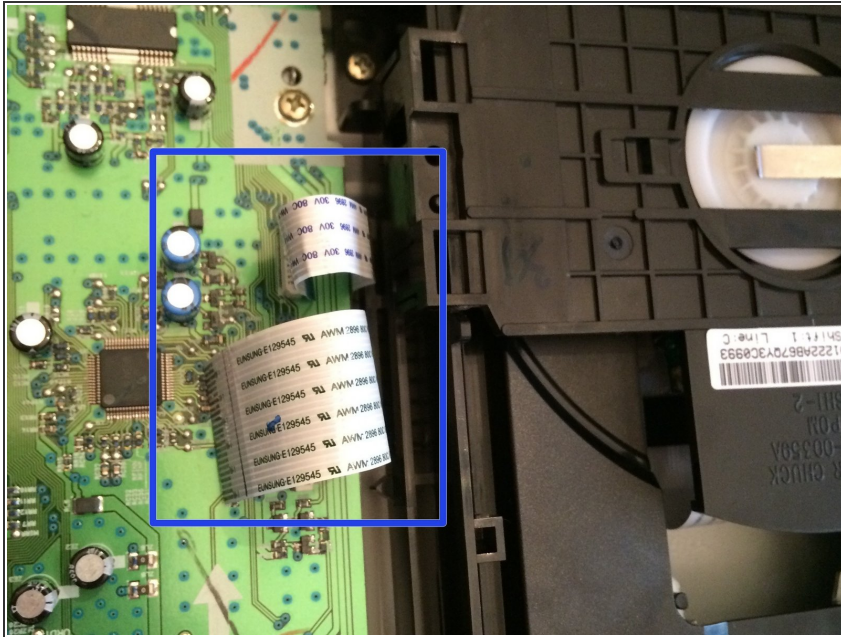
- to remove the cover of the device, pull the cover towards the back of the device until it is completely removed so you can see the insides of the device

Step 4 — Locate and Remove The Disk Tray



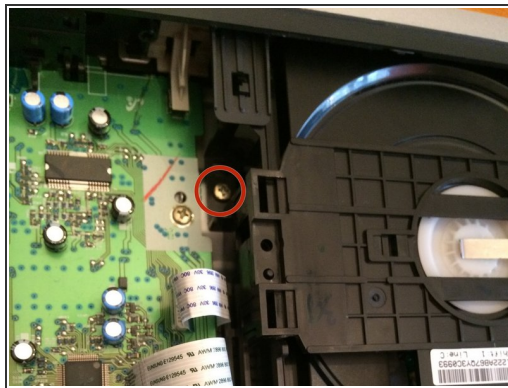
- ⚠ ***NOTE*** remember to never connect to power when working on electrical components
- Find and locate the disk tray it is located top right hand side of the component when the back of the device (dvd player) is facing you.

Step 5 — Removing The Data Strips



- Locate and gently remove the data strips on the tray. There are three in total, two on the left hand side and one on the right.

Step 6 — Removing The Screws



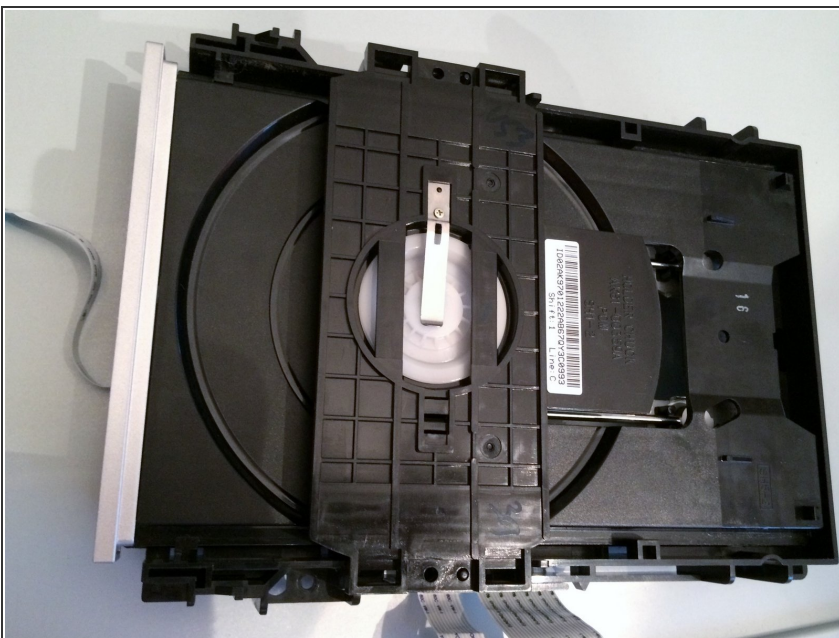
- As noted by the red circles, locate and remove the screws one at a time

Step 7 — Disk Tray Removal



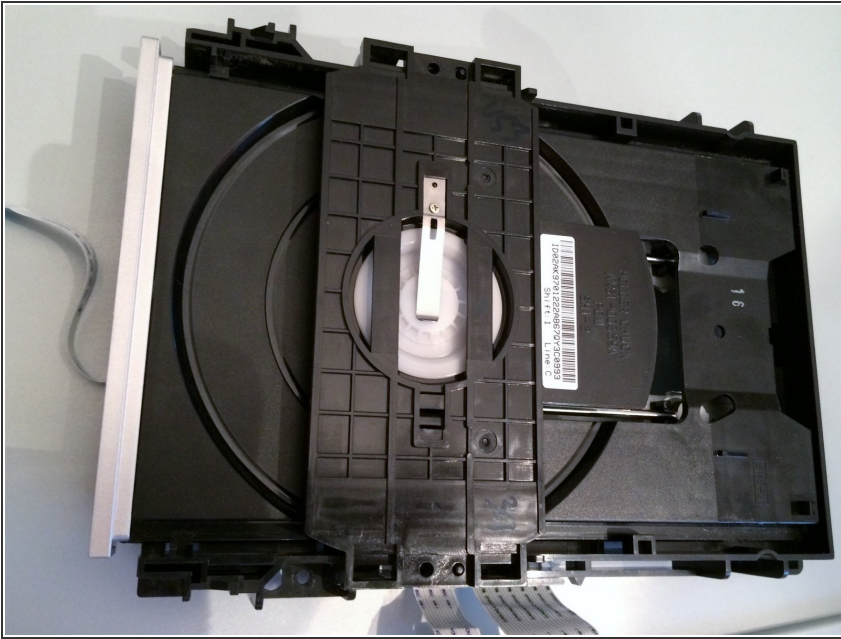
- After removing the clips slowly incline the disk drive towards you and unclip it from the two (2) brackets located on the top
- ☑ Be careful not to push too much pressure on the brackets since they tend to break easily



Step 8 — Success!



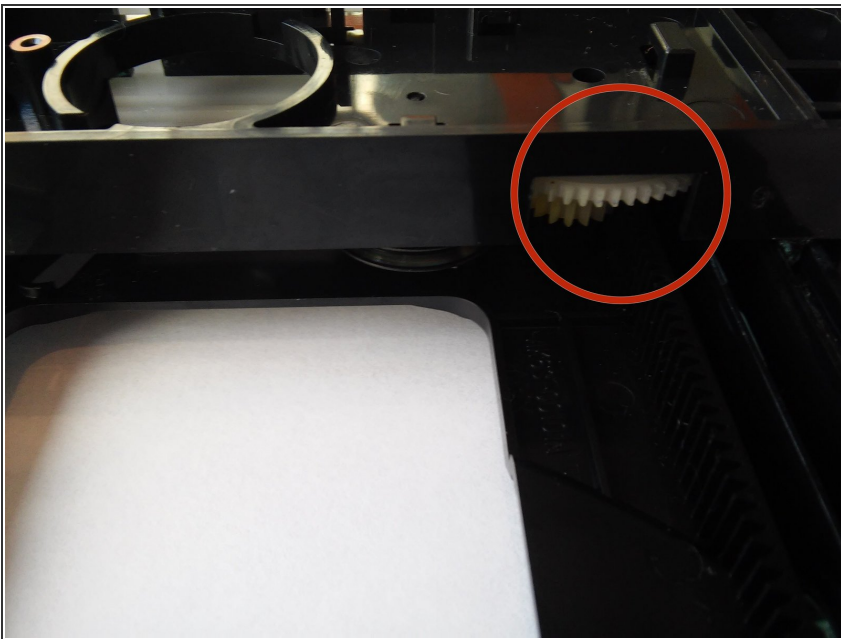
- Congrats! You have successfully have taken out the disk drive

Step 9 — Disk Tray Preparation



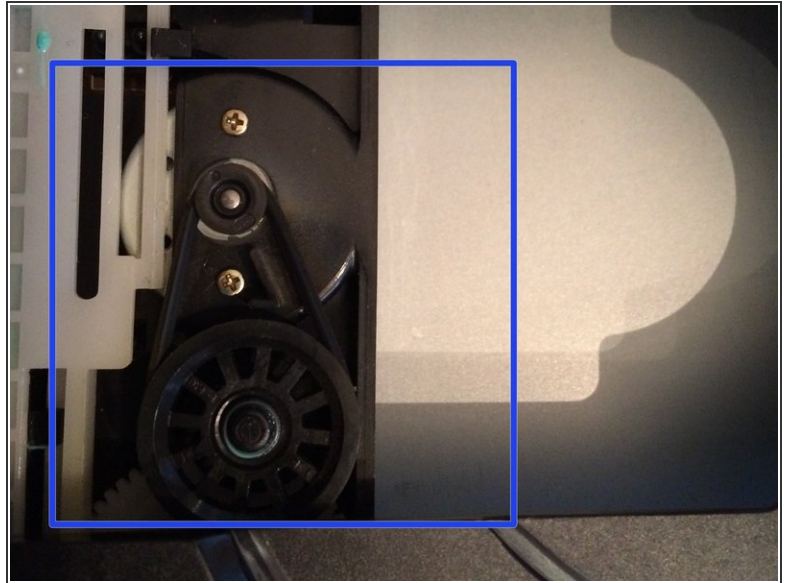
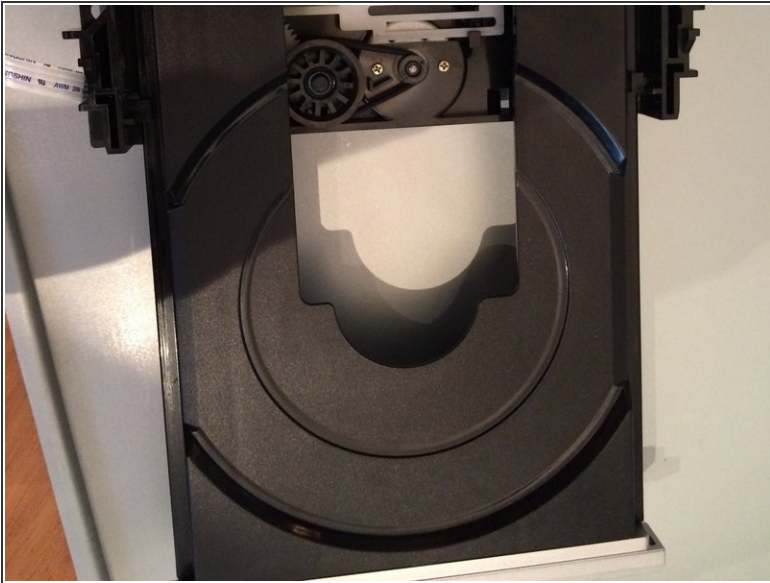
-  remember to never connect the device to a power source when working on electrical components on/in the device
-  It is recommended to buy the Elastic Rubber Band needed for this repair guide first, you can buy the band at this link:
<http://www.ebay.com/itm/100-Latex-Elasti...> the name of the specific rubber band for this device is located at the top of this repair guide

Step 10 — Locate the White Spindle



- Locate the small white spindle on the face of the tray (the face is where the DVD name is edged on the front) and turn the spindle counterclockwise (with the screw driver listed under "tools" or something similar) until the tray begins to open

Step 11 — Opening The Disk Tray



- Once the tray is opened, locate the rubber band, as noted by the blue box, and remove and replace it by pulling it out of the mechanism

Step 12 — Rubber Band Replacement



- Once removed, replace the band with one you have bought, or have on-hand and and insert it into its rightful place

To reassemble your device, follow these instructions in reverse order.