



# Samsung DVD-P230 Power Cord Replacement

This guide will show you how to replace a broken power cord.

Written By: Evan Domingue

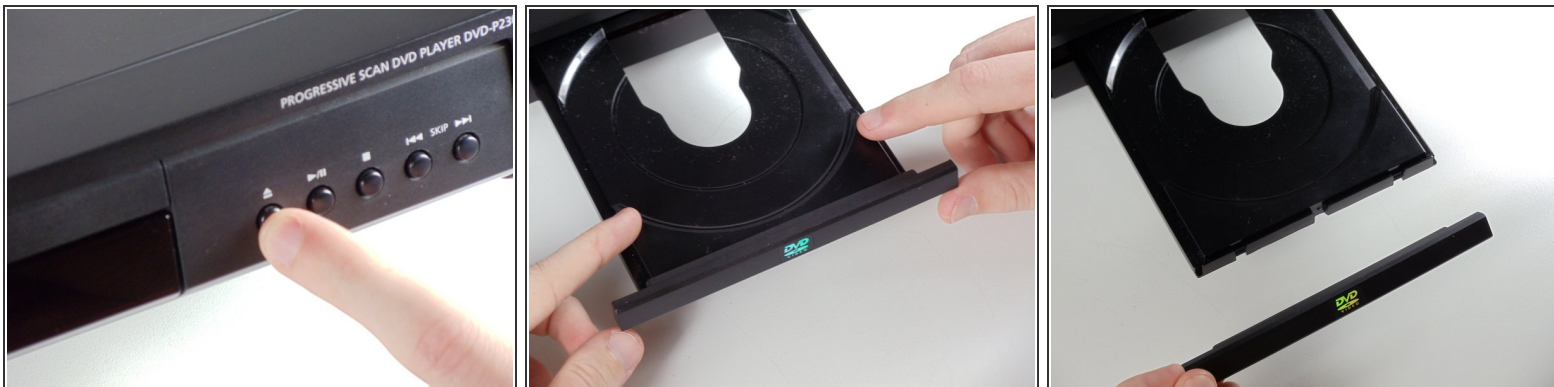




## TOOLS:

- [Phillips #2 Screwdriver](#) (1)
-

## Step 1 — Outer Cover & Faceplate



- Open the tray by pressing the eject button
- Remove the DVD tray faceplate by pushing the faceplate up off of the tray.

## Step 2



- Press the eject button to insert the tray
- After the tray is closed unplug DVD player



## Step 3



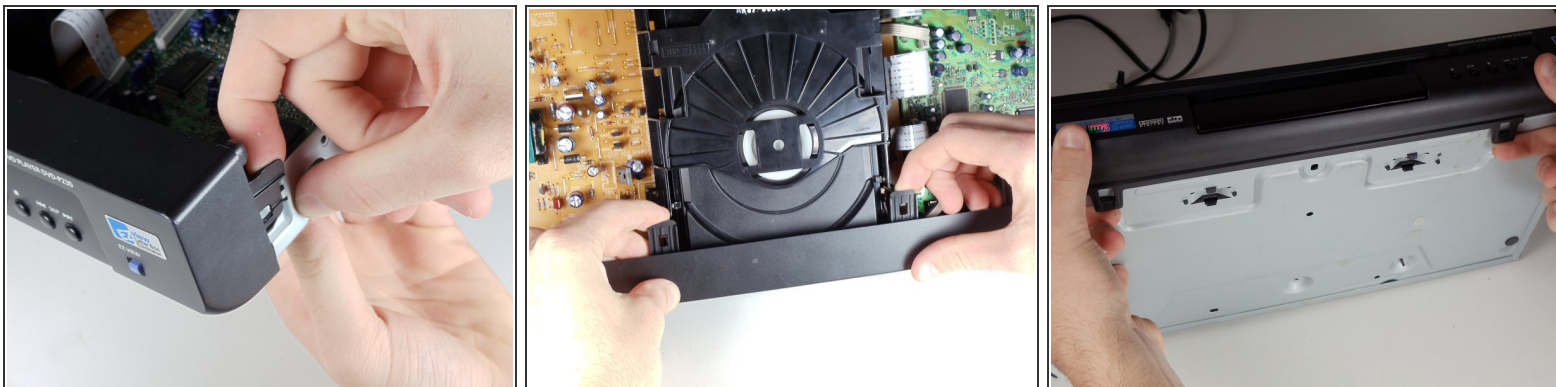
- Unscrew the 3 screws in the back.

## Step 4



- Pull the outer case upward and then towards you.

## Step 5



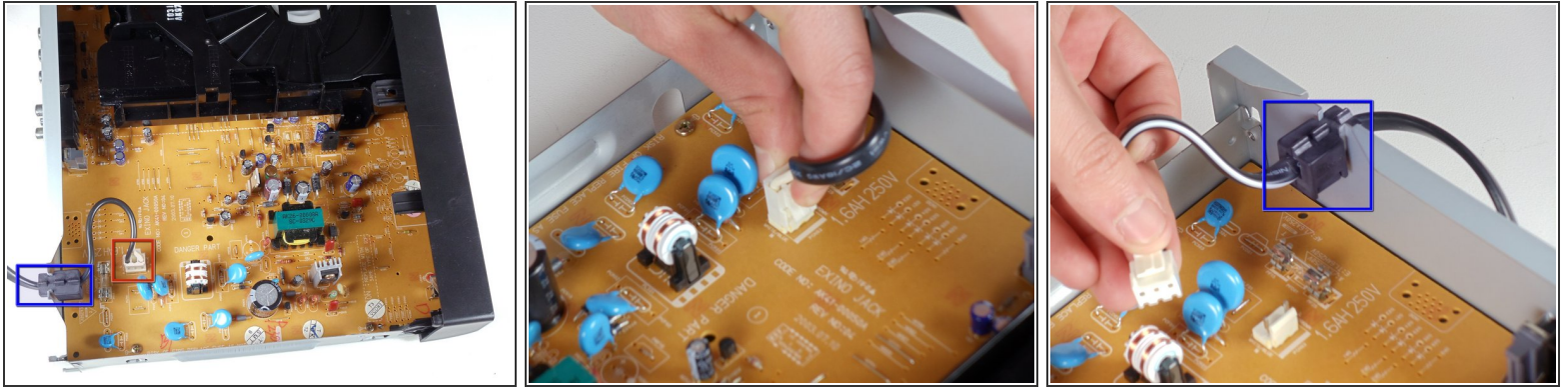
- There are six symmetrically placed tabs holding in the front faceplate. Unhook these six tabs to loosen the faceplate.

## Step 6



- Pull off front faceplate. This may take a couple of tries to get all six tabs unhooked simultaneously.

## Step 7 — Power Cord



- Locate the white clip that attaches the cord to the motherboard
- Grasp clip and squeeze to release
- Lift up and remove power cord
- Slide cord mount from outer case

To reassemble your device, follow these instructions in reverse order.