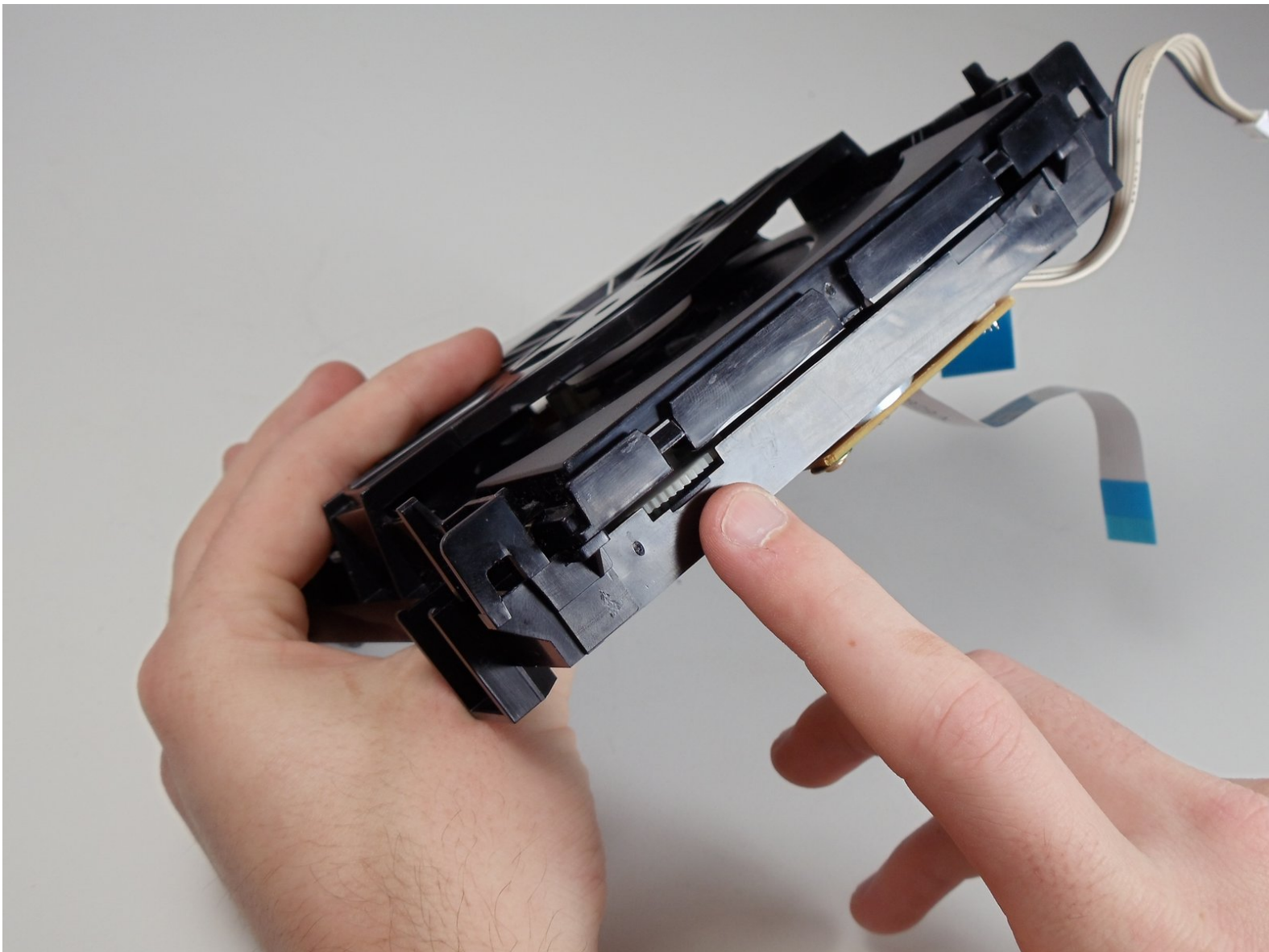




Samsung DVD-P230 Tray Motor Replacement

This guide will show you how to disassemble and replace the tray motor for the Samsung DVD P-230.

Written By: Mitchell Hart





TOOLS:

- [Phillips #2 Screwdriver](#) (1)
-

Step 1 — Outer Cover & Faceplate



- Open the tray by pressing the eject button
- Remove the DVD tray faceplate by pushing the faceplate up off of the tray.

Step 2



- Press the eject button to insert the tray
- After the tray is closed unplug DVD player

Step 3



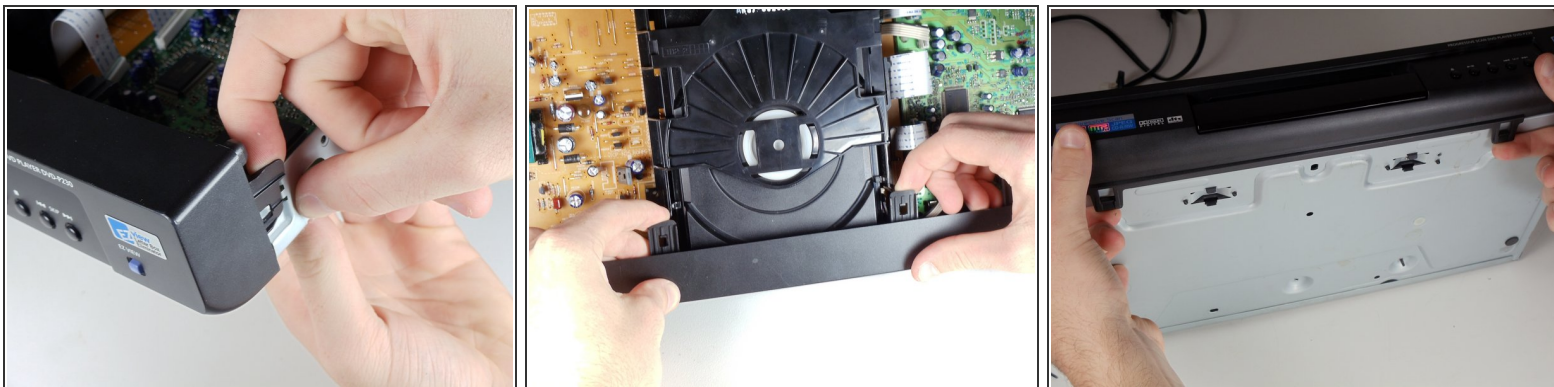
- Unscrew the 3 screws in the back.

Step 4



- Pull the outer case upward and then towards you.

Step 5



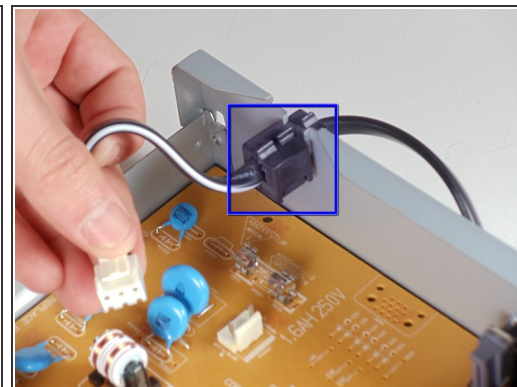
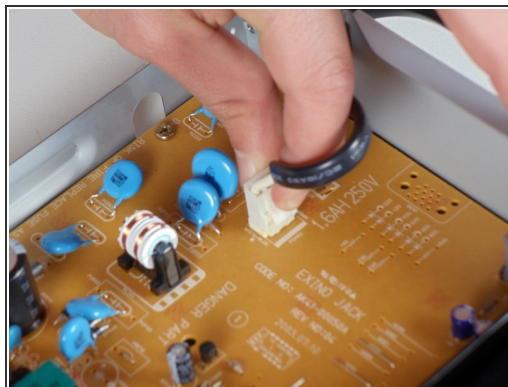
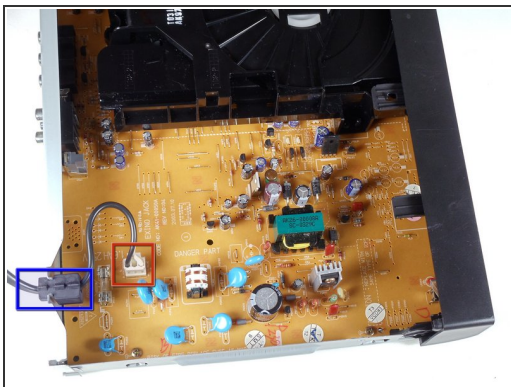
- There are six symmetrically placed tabs holding in the front faceplate. Unhook these six tabs to loosen the faceplate.

Step 6



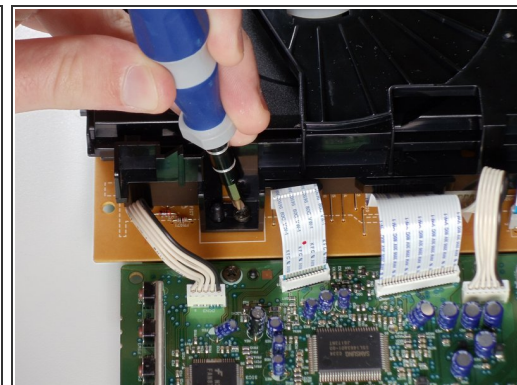
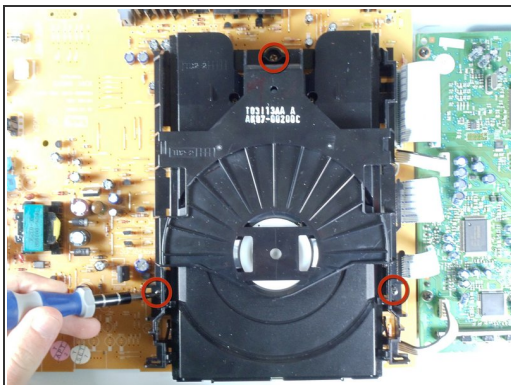
- Pull off front faceplate. This may take a couple of tries to get all six tabs unhooked simultaneously.

Step 7 — Power Cord



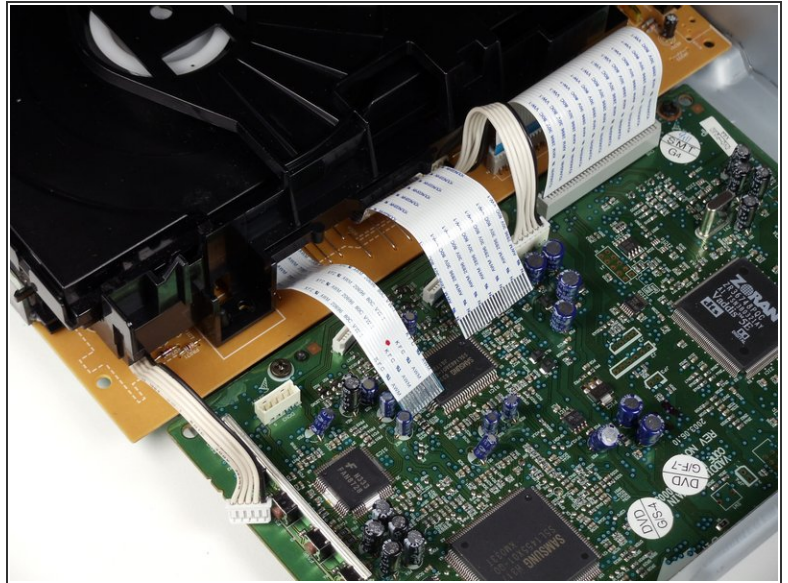
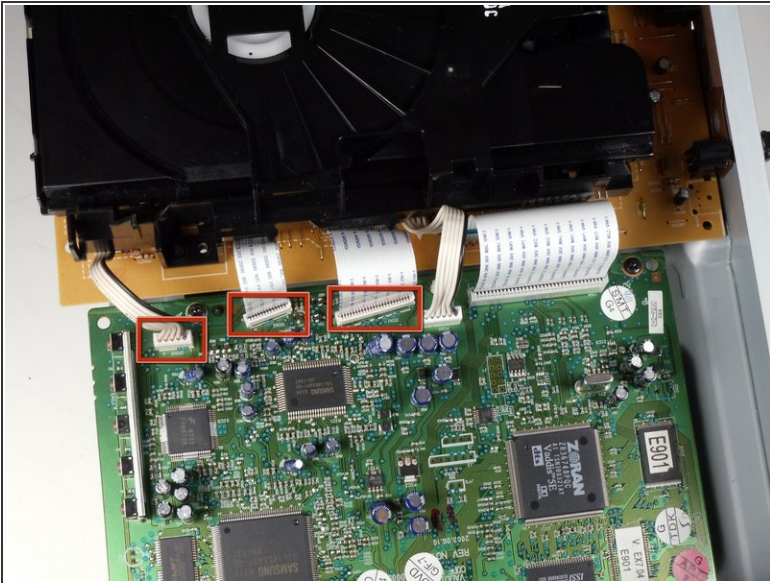
- Locate the white clip that attaches the cord to the motherboard
- Grasp clip and squeeze to release
- Lift up and remove power cord
- Slide cord mount from outer case

Step 8 — Tray



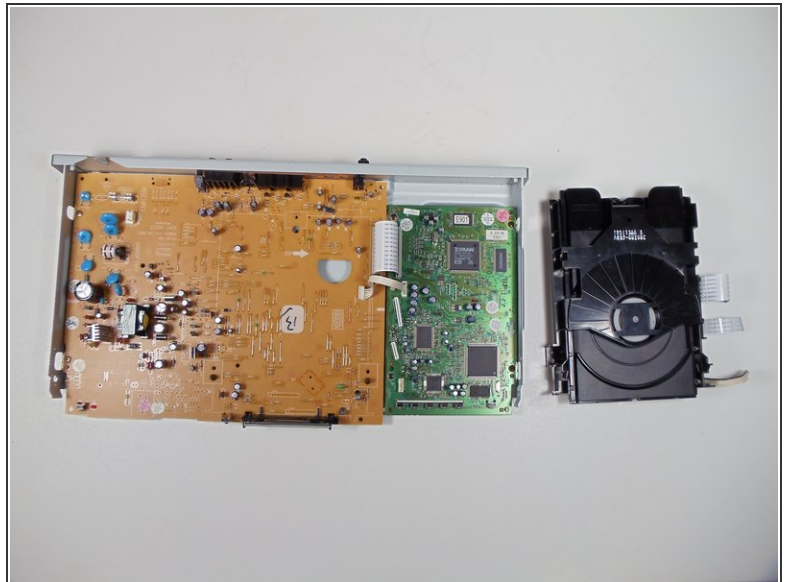
- Remove the three screws holding in the DVD tray

Step 9



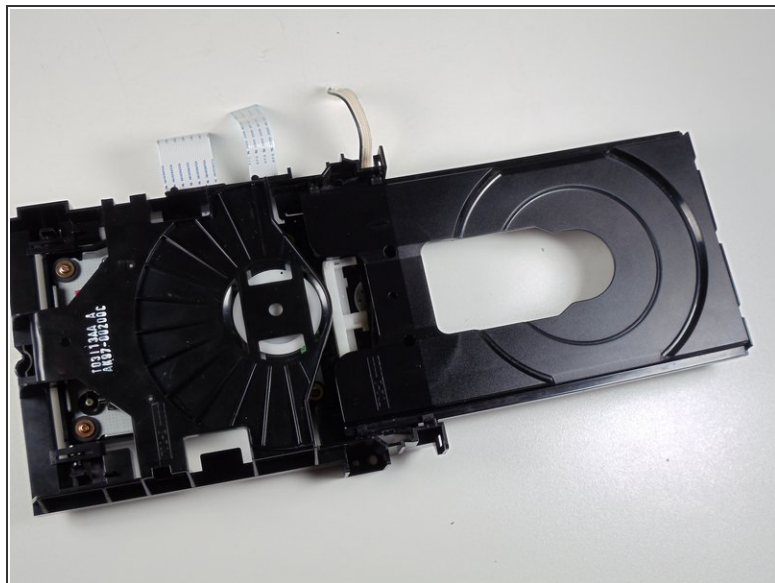
- Remove the power cord and first two ribbons by pulling them directly out of their sockets.

Step 10



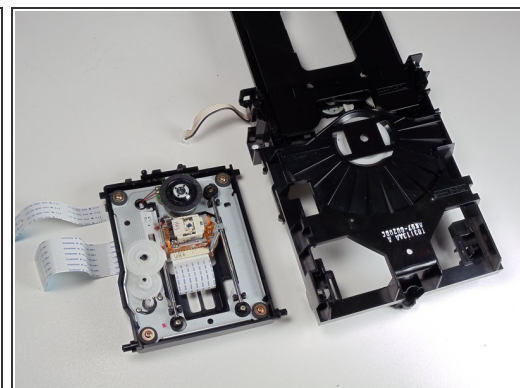
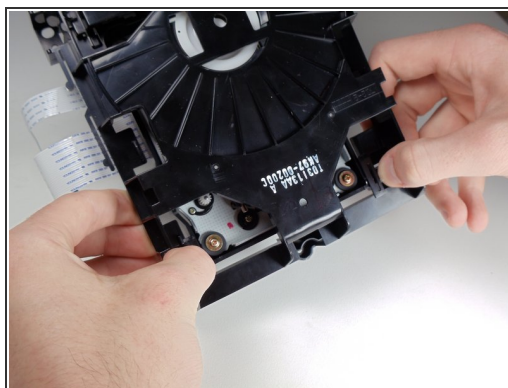
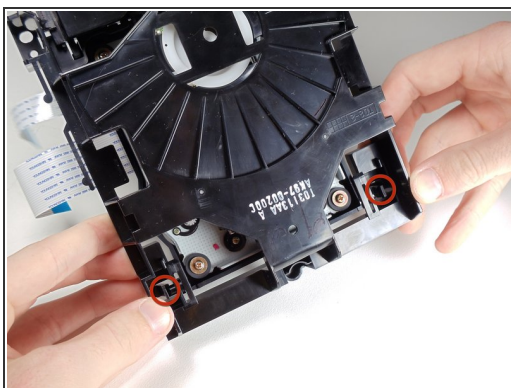
- Gently lift the DVD tray off of the motherboard.

Step 11 — Tray Motor



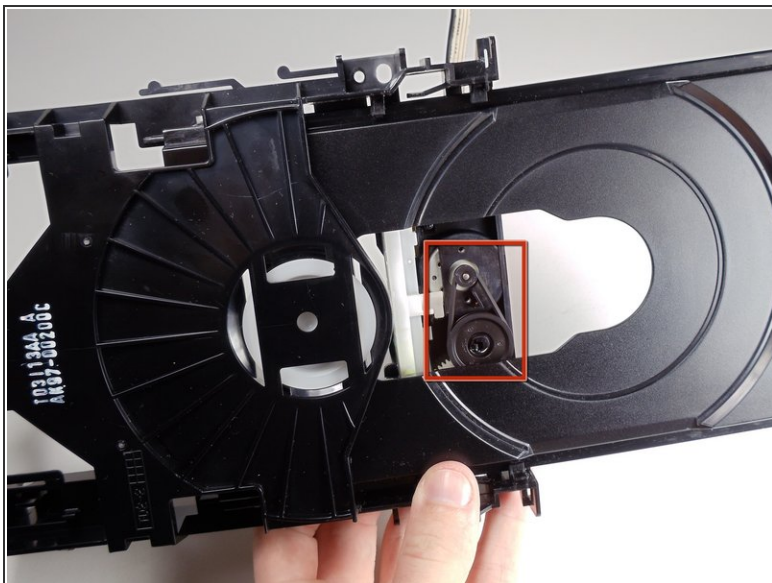
- Spin the small gear shown to the right to begin opening the tray. There should be relatively little resistance in the gear.

Step 12



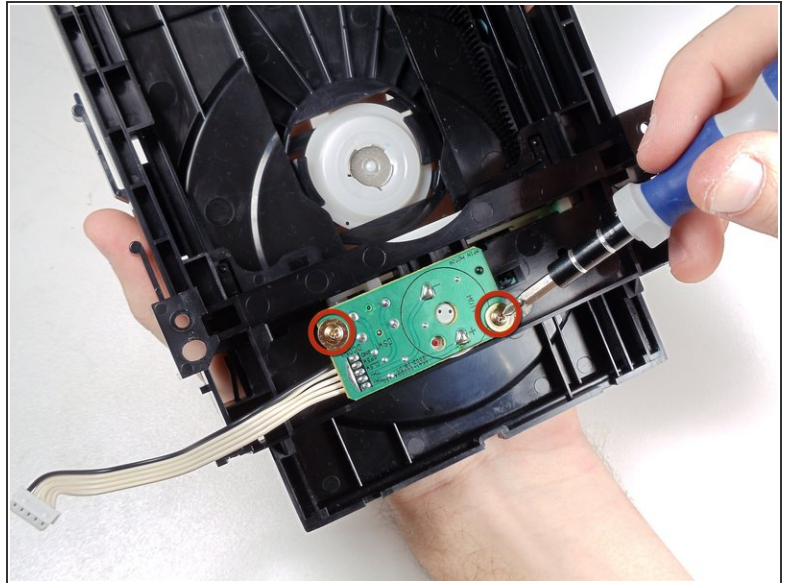
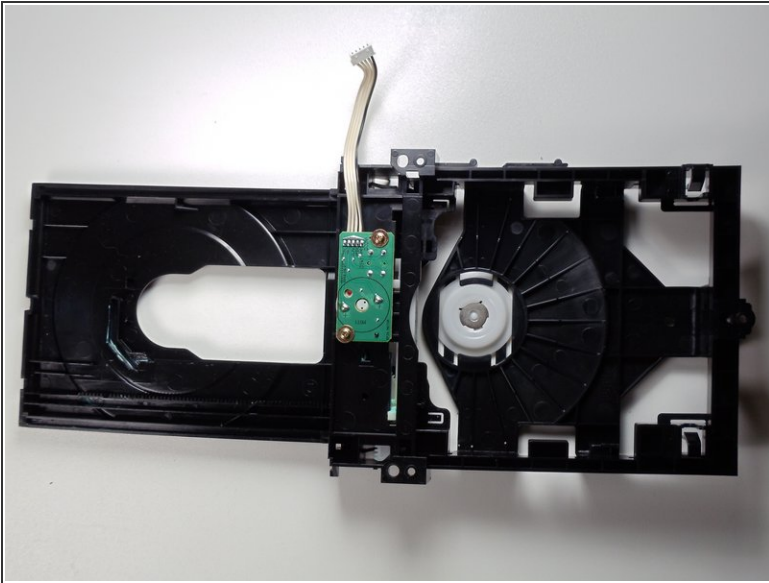
- Use your fingers to pull the shown tabs towards the sides of the tray, releasing the internal tray that contains the laser.

Step 13



- In order to remove the tray motor you must detach the small rubber band that runs between the two shown wheels.
- If the rubber band is improperly fitted onto one of the wheels or broken this is probably the cause of the tray not opening or closing.

Step 14



- Flip over the tray and unscrew the two screws that attach the motor to the tray.
- Once completed the motor can be easily removed and replaced.

To reassemble your device, follow these instructions in reverse order.