



Samsung DVD-P231 DVD Player Progressive Scan Digital Video Teardown

This guide will teach you how to tear down, partially clean, and with a little bit of memory and logic: it will teach you how to put it back together.

Written By: Owen Preece



INTRODUCTION

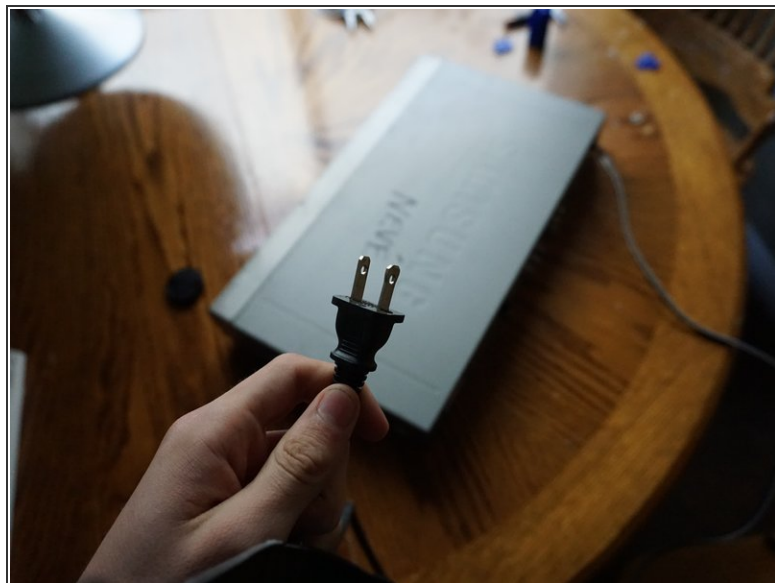
Take Apart a Samsung DVD-P231 DVD Player Progressive Scan Digital Video.



TOOLS:

- [screwdrivers of various sizes](#) (1)
-

Step 1 — Samsung DVD-P231 DVD Player Progressive Scan Digital Video Teardown



- First make sure that the DVD player can actually turn on, this is a deconstruct but we want to make sure there are no major issues

 **ENSURE YOUR SAFETY BY UNPLUGGING THE DEVICE BEFORE BEGINNING**

Step 2



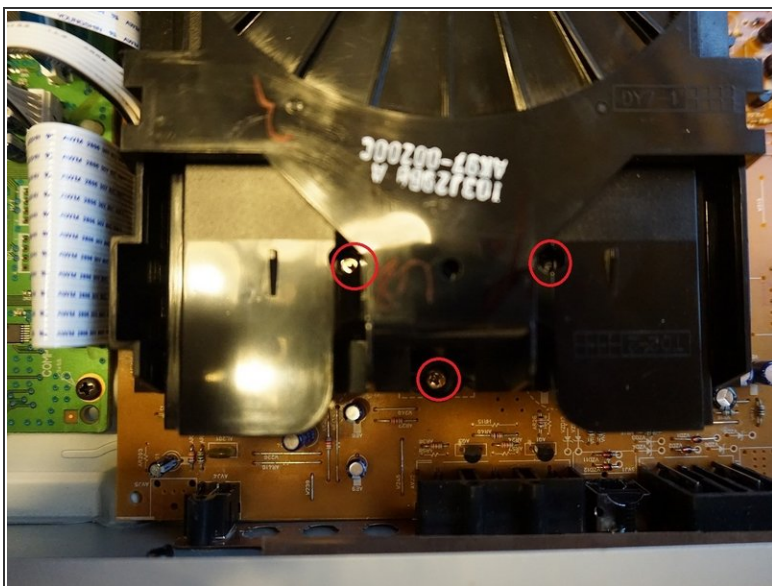
- Remove the screws on the outside edge of the top covering with the bottom of the DVD Player down
- There will be 3 Screws, two on either side and 1 in the center top of the back side of the DVD Player

Step 3



- Gently cleave open the top case from the bottom case using your hands
- The inside should appear as the second photo

Step 4



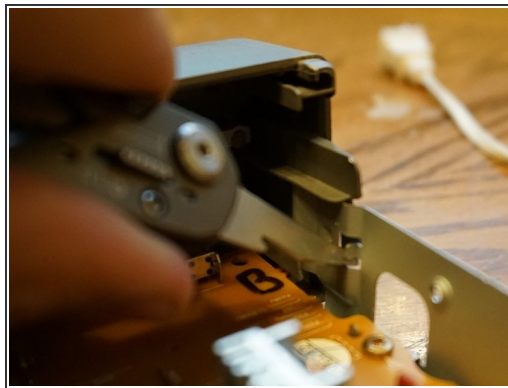
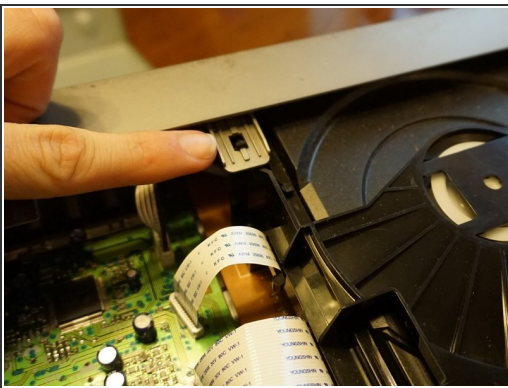
- Remove the 3 screws, the two upper screws will require a smaller screwdriver
- The second images two screws will require the larger screwdriver, make sure to not strip these

Step 5



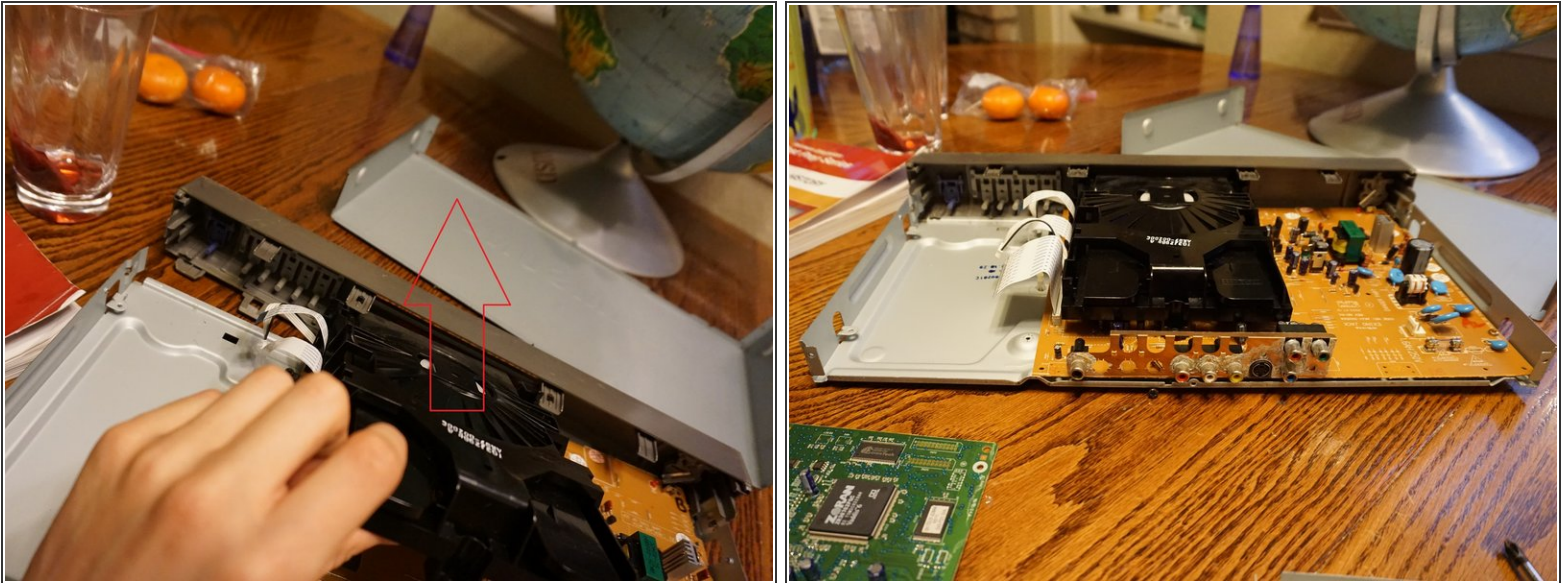
- Remove all ribbons with great care gently wiggling side to side while applying force perpendicular to the circuit board

Step 6



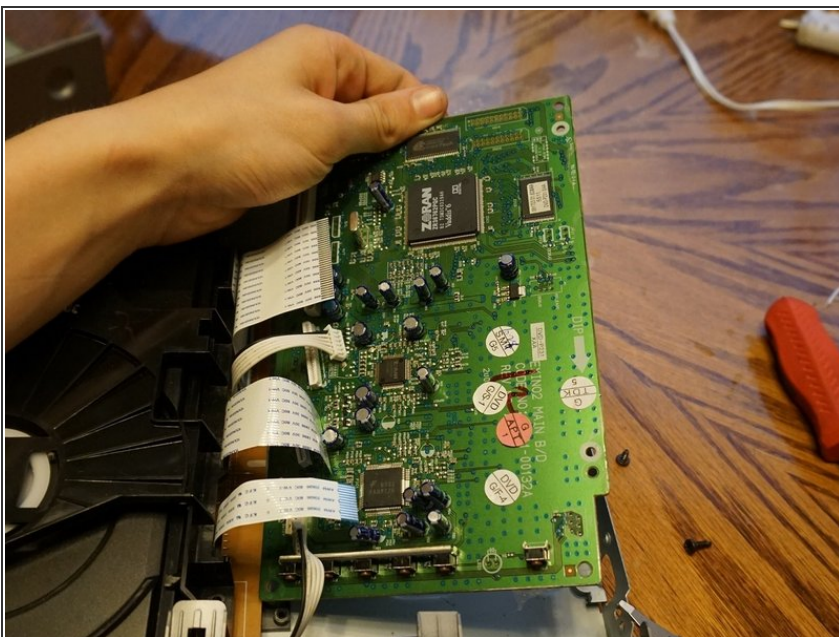
- Remove the clips around the edge of the front face, there may very well be more than I show in these pictures, but make sure to do this before you proceed
- There are two on the bottom that you press together to unclip the DVD reader

Step 7



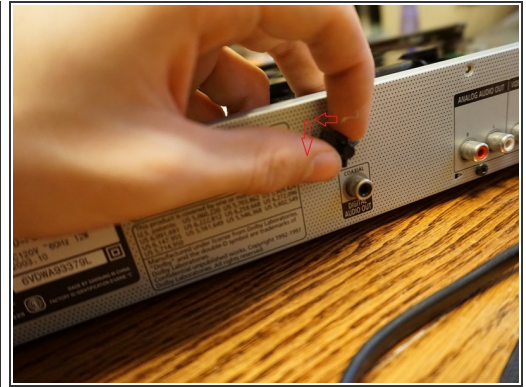
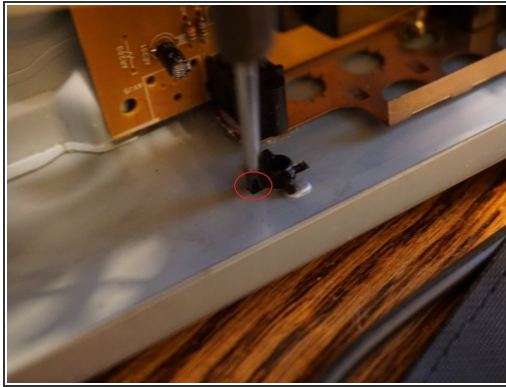
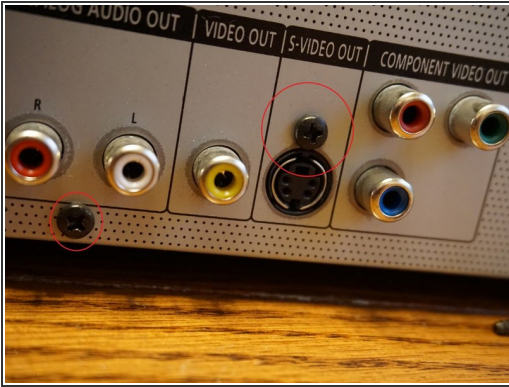
- Gently tug Upwards using the front face of the DVD Player as a pivot, make sure that no clips are still connected
- If you were successful you will notice the lip cover for the DVD tray has been removed and can be downward slid back on

Step 8



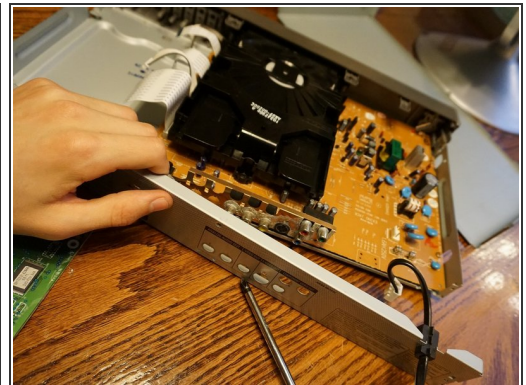
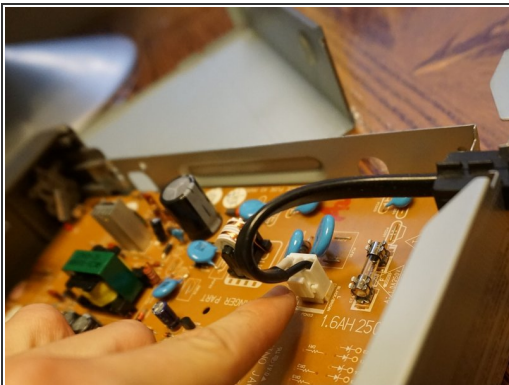
- Gently tilt up the board making sure to check the ribbon connections twice

Step 9



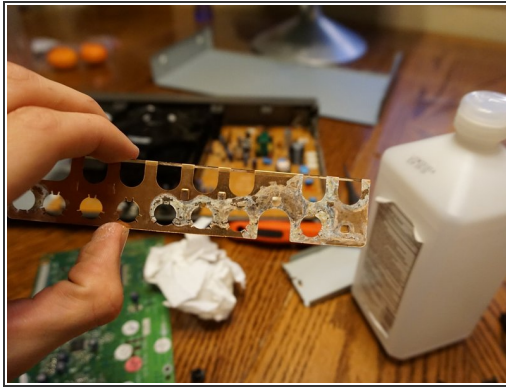
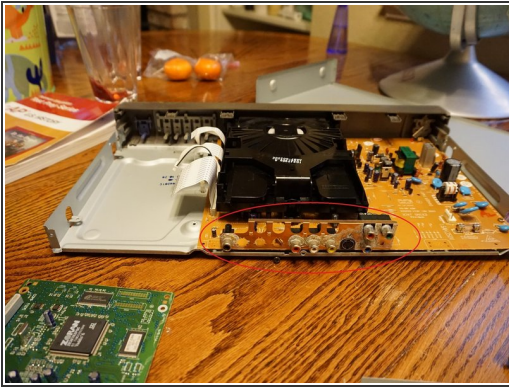
- Remove the screws on the back plate(side with all the ports)
- Press in the very small and fragile tabs(image 2) with a flathead, nail, or other small tipped objects
- turn the knob as seen in the third picture to align the hole in the case with the knob wings

Step 10



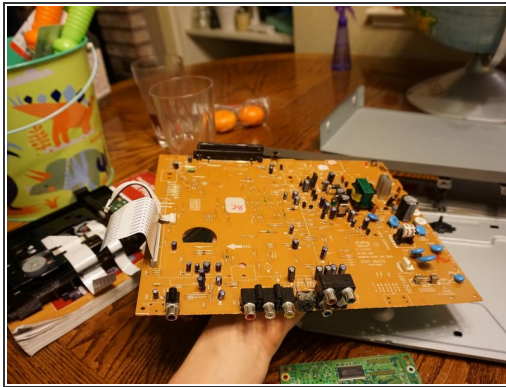
- Unplug the power cable from the circuit board, pay attention to the tab on the side, press it down and pull
- Pull back the two tabs on either side of the back case and pull away

Step 11



- Gently slide off the copper slip around the ports if there is evidence of corrosion
- Place in vinegar(preferably apple cider) for 30 minutes to an hour to remove the corrosion from the copper slip

Step 12



- Check to make sure that you have everything if you plan to reassemble this project

⚠ Wash you hands before any activity after this project